

FOR LEASE

1122 W RANDOLPH STREET
CHICAGO, IL 60607



WWW.MILLERCHICAGOREALESTATE.COM



Property Snapshot

- 13,258 Sq Ft space available in a 2-story building in the heart of Fulton Market
- Free standing building located on the corner of Randolph and May
- Situated in a high-visibility location with over 8,350 vehicles per day & a walk score of 98
- Steps from Fulton Market's Restaurant Row
- Favorable C zoning allows a variety of uses including retail, restaurant, or re-development

Highlights

1st Floor: 6,629 Sq Ft

2nd Floor: 6,629 Sq Ft

Property Type: Retail

Zoning: C1-3

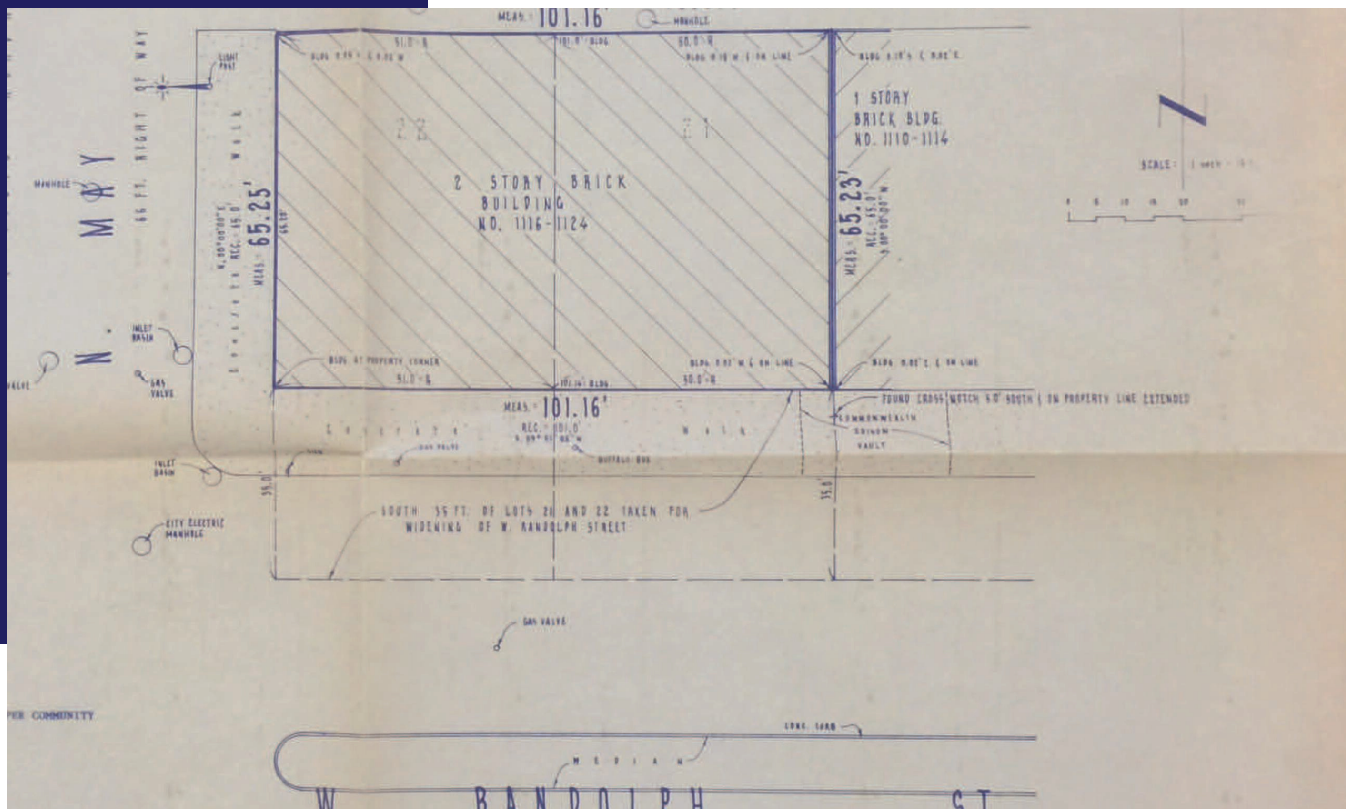
Alderman: Walter Burnett Jr



J.E. DIAZ

JOSE@MILLERCHICAGOREALESTATE.COM
773.744.3906

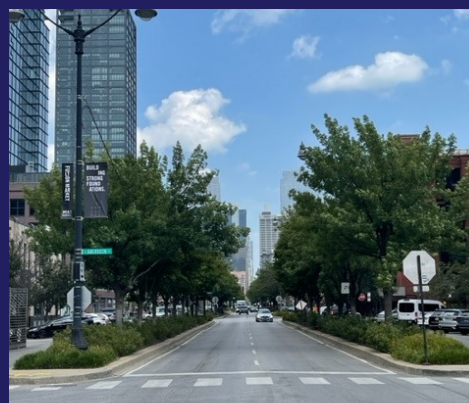
FULTON MARKET PRIME RETAIL
ON RANDOLPH & MAY



Location

- Fulton Market is one of Chicago's most dynamic, emerging submarkets. Home to cutting-edge eateries / breweries, well-paid young professionals and high-profile employers such as McDonald's global headquarters, Google's Midwest headquarters and Dyson's U.S. headquarters.
- Easily accessible to public transportation, 0.2 miles to CTA Morgan Green & Pink Line stations, 0.2 miles to CTA #20 Morgan bus route, 0.4 miles to CTA #8 Halsted bus route, 0.5 miles to CTA #65 Grand bus route, and 0.6 miles to CTA Grand Blue Line station

DEMOGRAPHICS



\$140,553
Average Household Income



13,355
Total Population



32,364
Daytime Employees



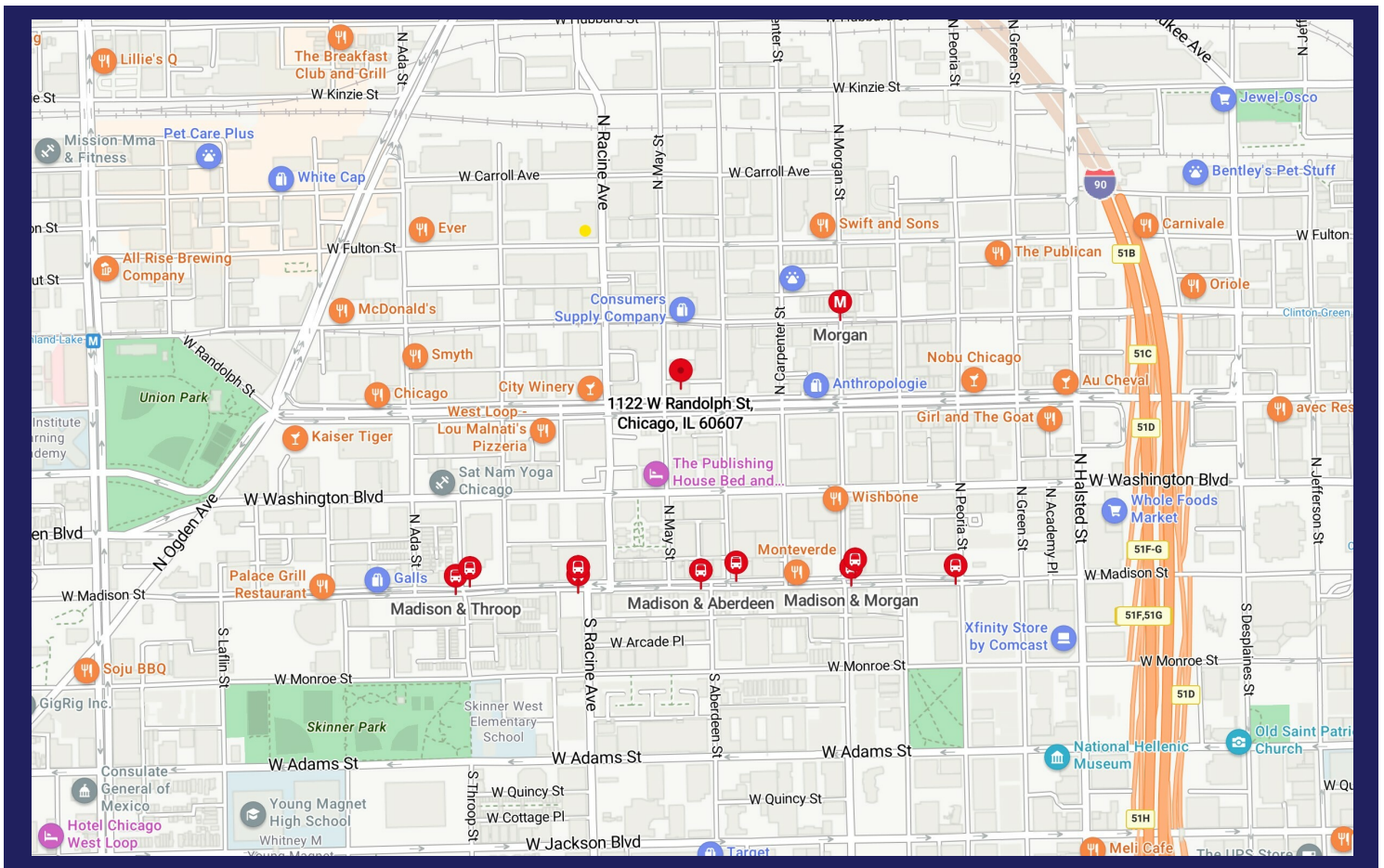
8,016
Total Households

J.E. DIAZ

JOSE@MILLERCHICAGOREALESTATE.COM
773.744.3906

MILLER
CHICAGO
WWW.MILLERCHICAGOREALESTATE.COM

AREA MAP



TRAFFIC COUNT

W Randolph Street

8,300