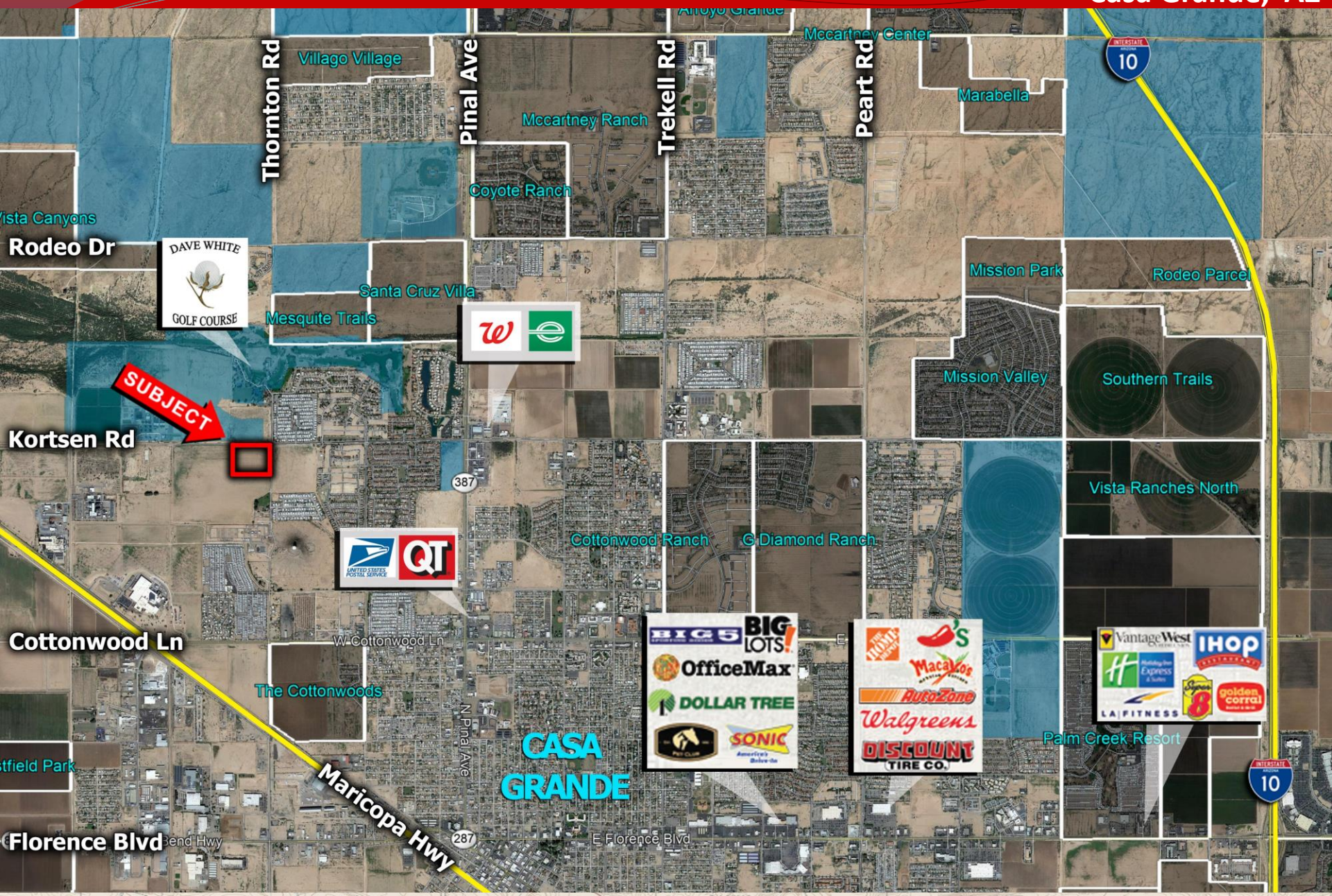
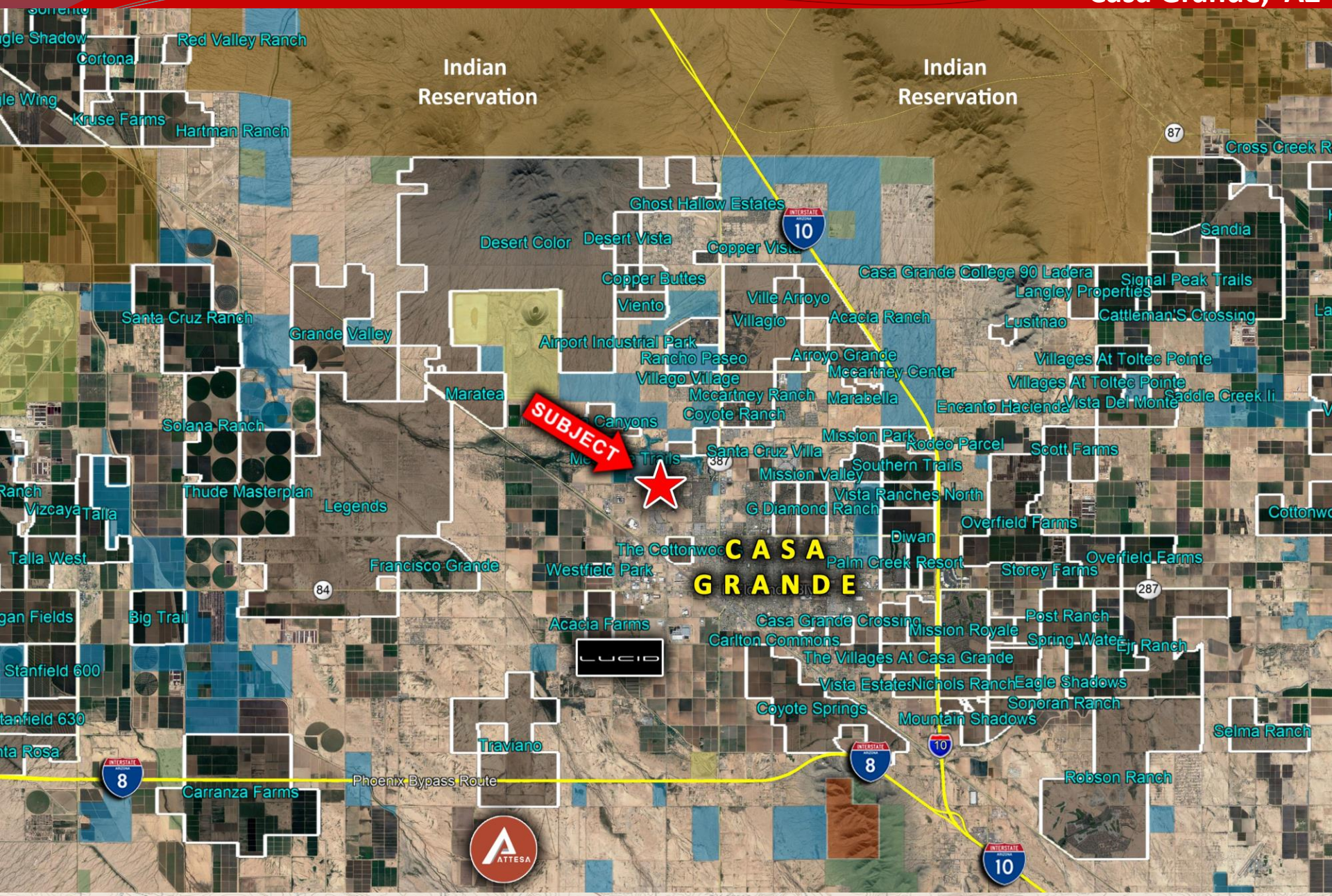
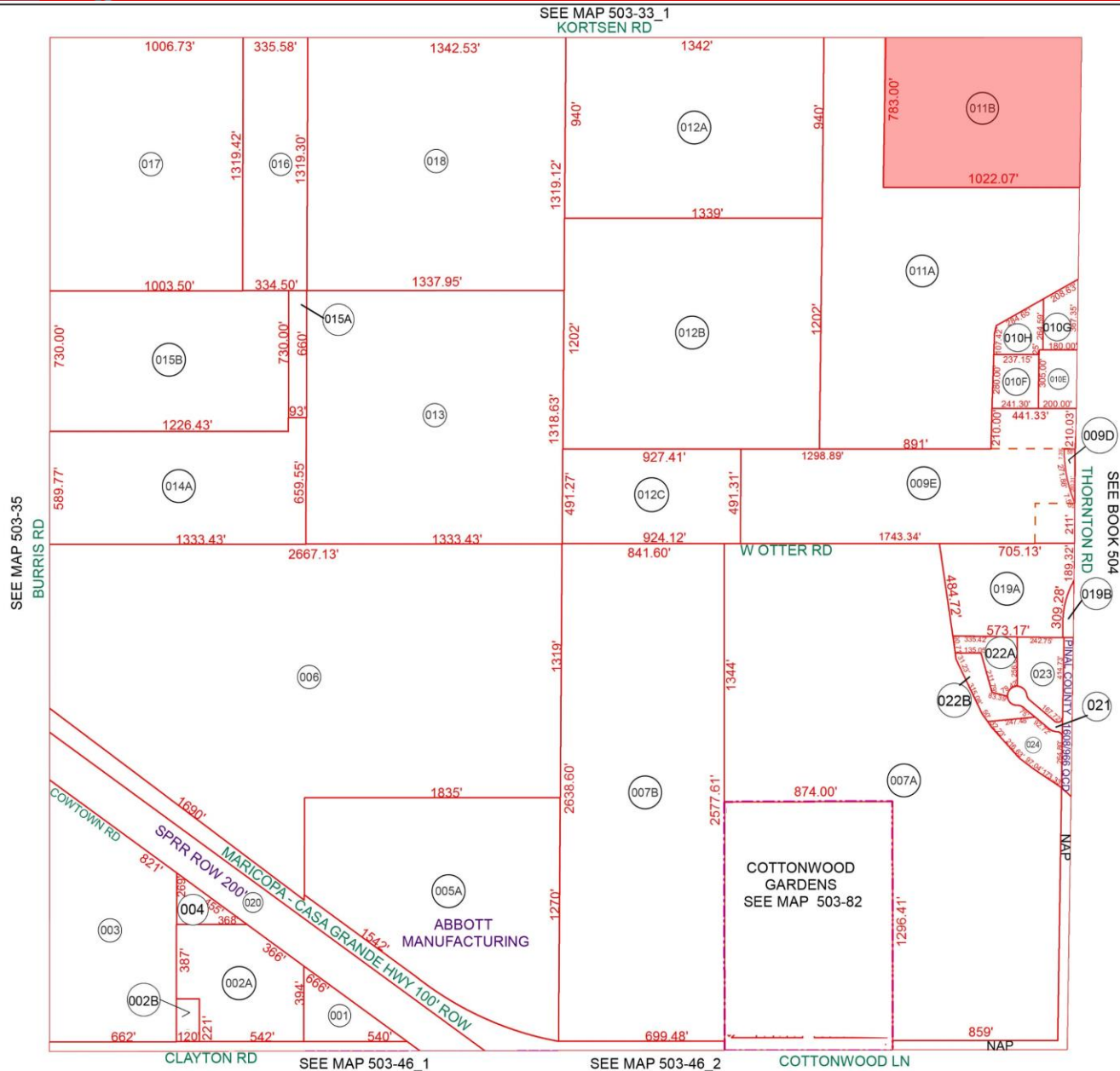


- ❑ **Location:** SW Corner of Kortsen Rd and Thornton Rd in Casa Grande, AZ.
- ❑ **APN:** 503-34-011B
- ❑ **Size:** ± 18.35 AC
- ❑ **Zoning:** UR - Urban Ranch (City of Casa Grande)
- ❑ **Utilities:** All to Site
- ❑ **Price:** \$3.00/ft.
- ❑ **Comments:** Located within the vastly expanding industrial/employment corridor of west Casa Grande. This development ready parcel has all utilities to site (capacity to be verified by Buyer) and located less than 3 miles from the new multi-billion-dollar Lucid Facility as well as other major industrial facilities (Abbot Laboratories, Frito Lay, Walmart Distribution Center, etc.)

± 18.35 AC in Casa Grande, AZ





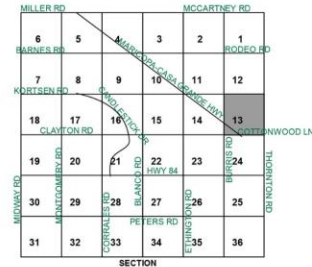
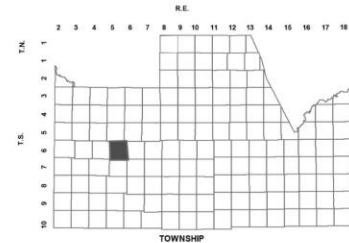


BOOK - MAP

503-34

SEC. 13 T.06S. R.05E.

LOCATION MAPS



Revised: 5/22/2018

By: **TH**



PINAL COUNTY

WIDE OPEN OPPORTUNITY

Pinal County Assessor

THIS MAP DOES NOT REPRESENT A SURVEY. NO LIABILITY IS ASSUMED FOR THE ACCURACY OF THE DATA DELINEATED HEREIN, EITHER EXPRESSED OR IMPLIED BY PINAL COUNTY OR ITS EMPLOYEES. THIS MAP IS COMPILED FROM OFFICIAL RECORDS, INCLUDING PLATS, SURVEYS, RECORDED DEEDS AND CONTRACTS, AND ONLY CONTAINS INFORMATION REQUIRED FOR THE PINAL COUNTY ASSESSOR'S OFFICE PURPOSES.