



5665 Flatiron Parkway

Suite 250, Boulder, CO

Exceptional Office Space in Flatiron Park

Lynda Gibbons

lynda@gibbonswhite.com
(303) 586-5920

Annie Lund

annie@gibbonswhite.com
(303) 586-5922

Steve Sims

steve@gibbonswhite.com
(303) 586-5932

www.gibbonswhite.com

[Property Info & Gallery](#)

[View Map](#)

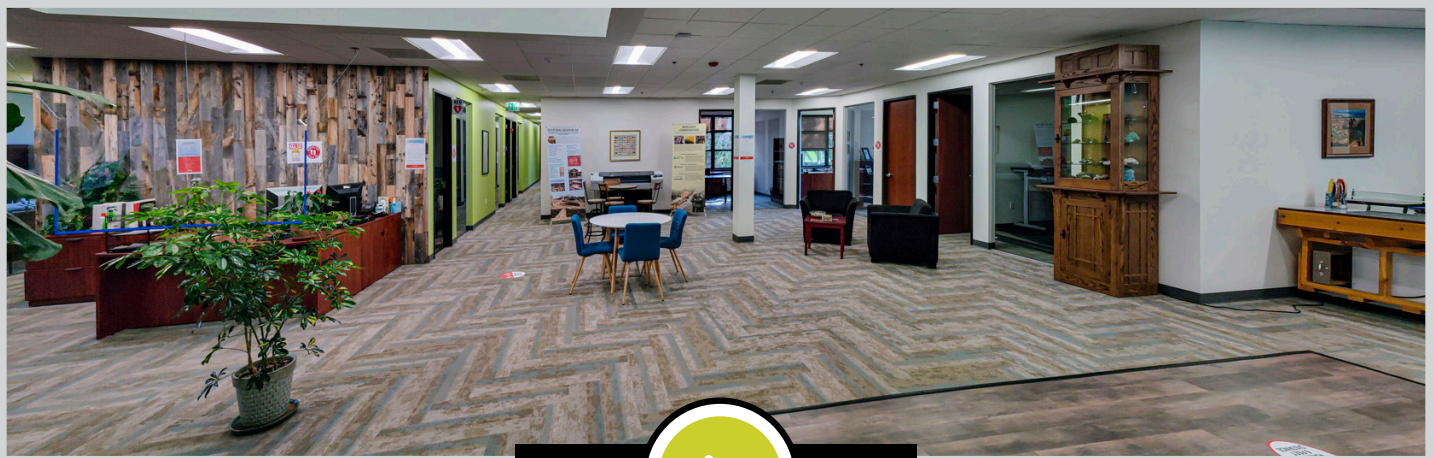
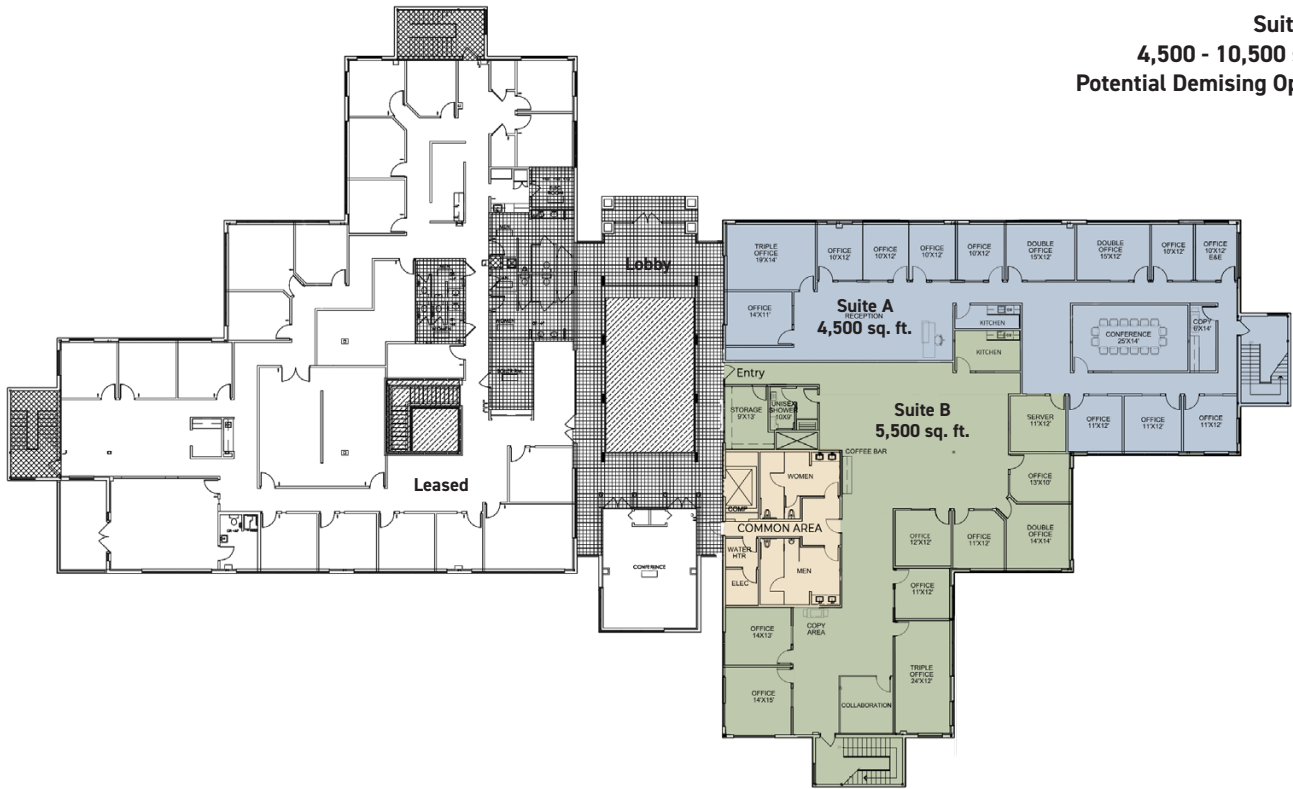
Available Space	10,500 sq. ft.
Lease Rate / sq. ft.	\$23.00 NNN
Expenses / sq. ft.	\$10.87*

**Plus Utilities & Janitorial*

- Divisible to 4,500 or 5,500 sq. ft.
- Recently Remodeled Common Areas Create a Warm & Inviting Entrance
- Outdoor Gathering Spaces & Furnishings Provide a Great Place for Mid-Day Breaks, Lunches or Meetings
- Beautiful Skylights Above the Reception Area Bringing in Lots of Natural Light
- Private Restrooms & Shower Room Inside the Suite
- Co-Tenants in the Building Include Garmin International & Magic Leap
- Flatiron Park is Home to Some of Boulder's Best Creative, Tech & Life Sciences Companies & Will Soon See the Arrival of Apple as They Move Into Their New 115,000 sq. ft. Office
- Close to Breweries & Restaurants Such as Ozo Coffee, Upslope Brewing, Wild Provisions Beer Project, Baby Goat Coffee, Blackbelly Restaurant, Snarf's Sandwiches & Pica's Taqueri

© 2025 Gibbons-White, Inc.

Suite 250
4,500 - 10,500 sq. ft.
Potential Demising Options



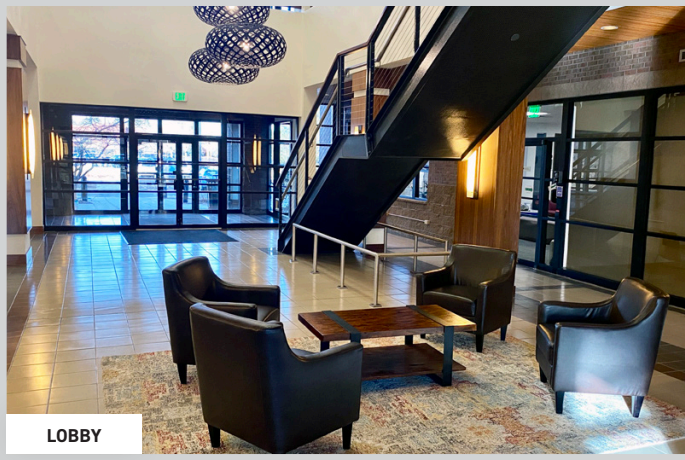
VIDEO



TOUR



© 2025 Gibbons-White, Inc.



LOBBY



PATIO



LOBBY

VIDEO



TOUR

