



FOR LEASE

1306 Mercantile, Highland, IL
(WOODCREST PLAZA)

KELLY HULVEY

Broker

618.210.4702 Mobile
Kelly@choosekwg.com

3318 N IL Street
Swansea, IL 62226

Choosekwg.com

618.202.4500 Office



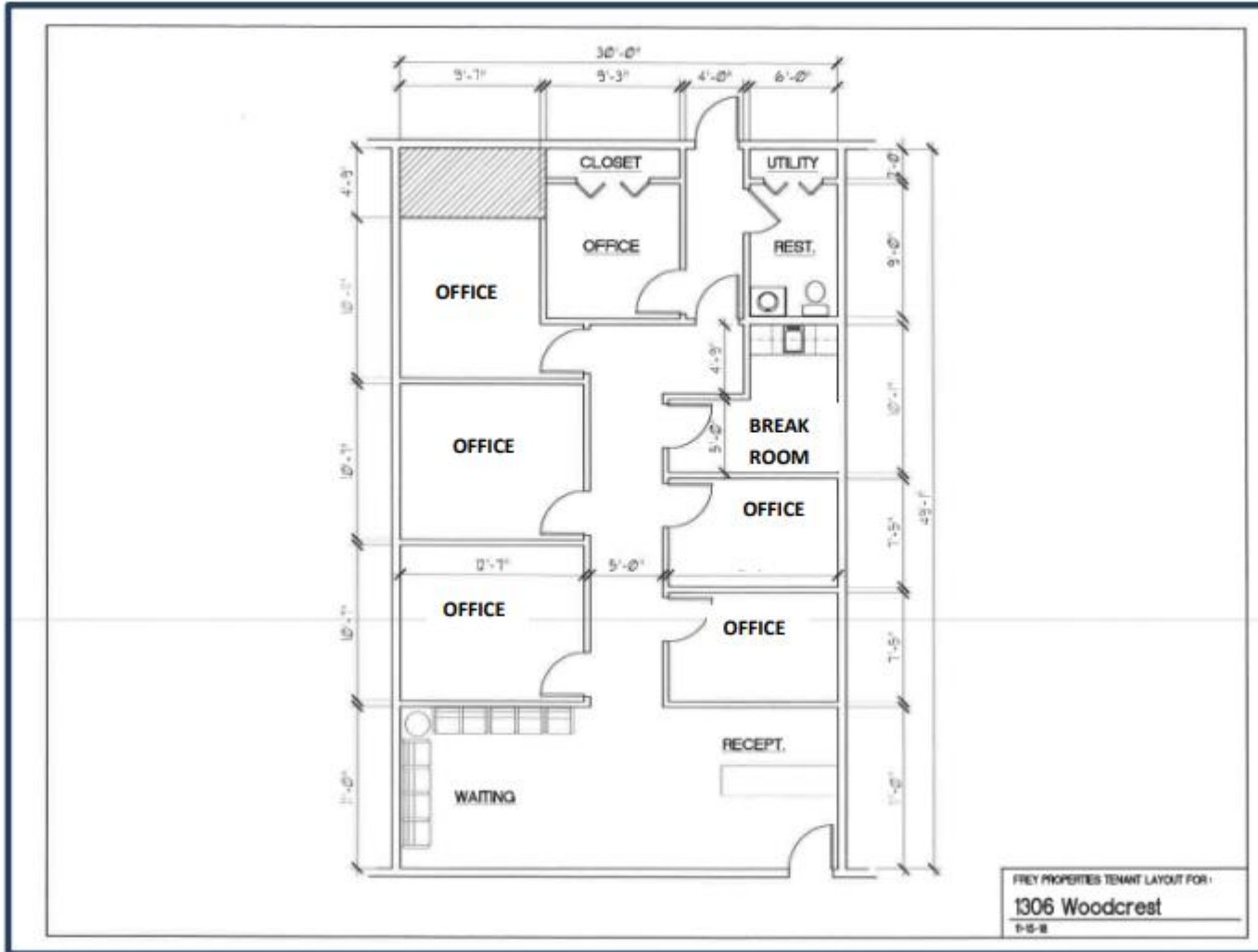
Professional Office Space

- 1,500 Square Feet Available
- Reception/ Waiting Area, Six (6) Private Offices, Break Room and Restroom.
- Great layout for Chiropractor, Insurance Company, Real Estate Office, Spa, Massage, Financial Company, Counselor, Medical, etc.,
- Renovated in 2018
- Professionally Managed
- Pylon Signage Available
- Close to Highland's Business District
- **Lease Rate: \$2,000 Per Month**
- **NNN Lease**
- **1 Month FREE RENT with a 3 Year Lease Term**

Information herein is not warranted and subject to change without notice. We assume no liability for errors on items included in quoted price. Broker makes no representation as to the environmental condition of property and recommends Purchaser's/ Tenant's independent investigation.

FLOOR PLAN

1306 Mercantile Drive
Highland, IL 62249



1,500 SF
Available



Information herein is not warranted and subject to change without notice. We assume no liability for errors on items included in quoted price. Broker makes no representation as to the environmental condition of property and recommends Purchaser's / Tenant's independent investigation.

PHOTOS



1306 Mercantile Drive
Highland, IL 62249

