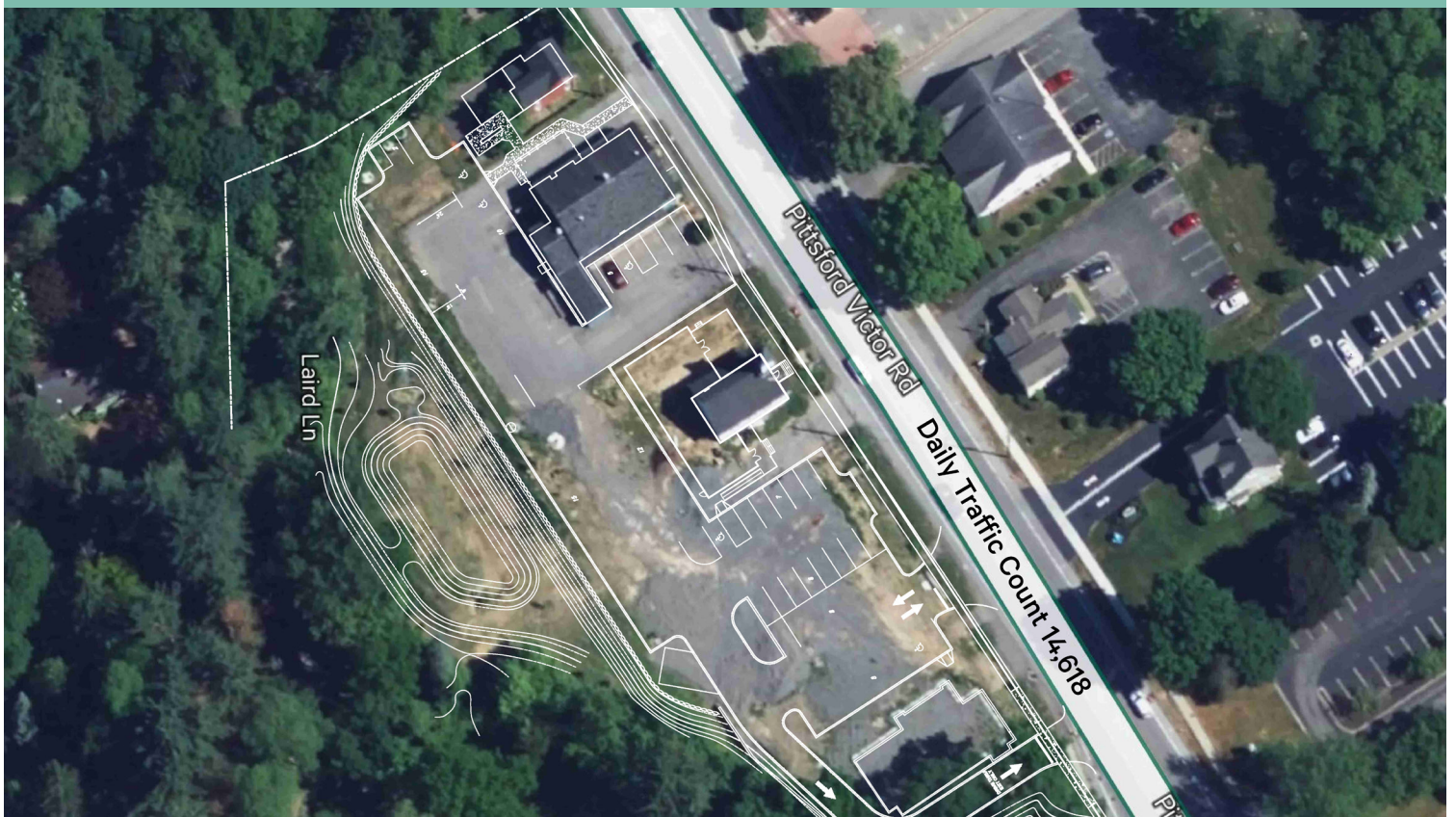


# Bushnell's Basin Retail & Office

Under New Ownership

721-751 Pittsford-Victor Road  
Perinton, NY 14534

Multiple Space Opportunities, Renovation & Expansion Underway

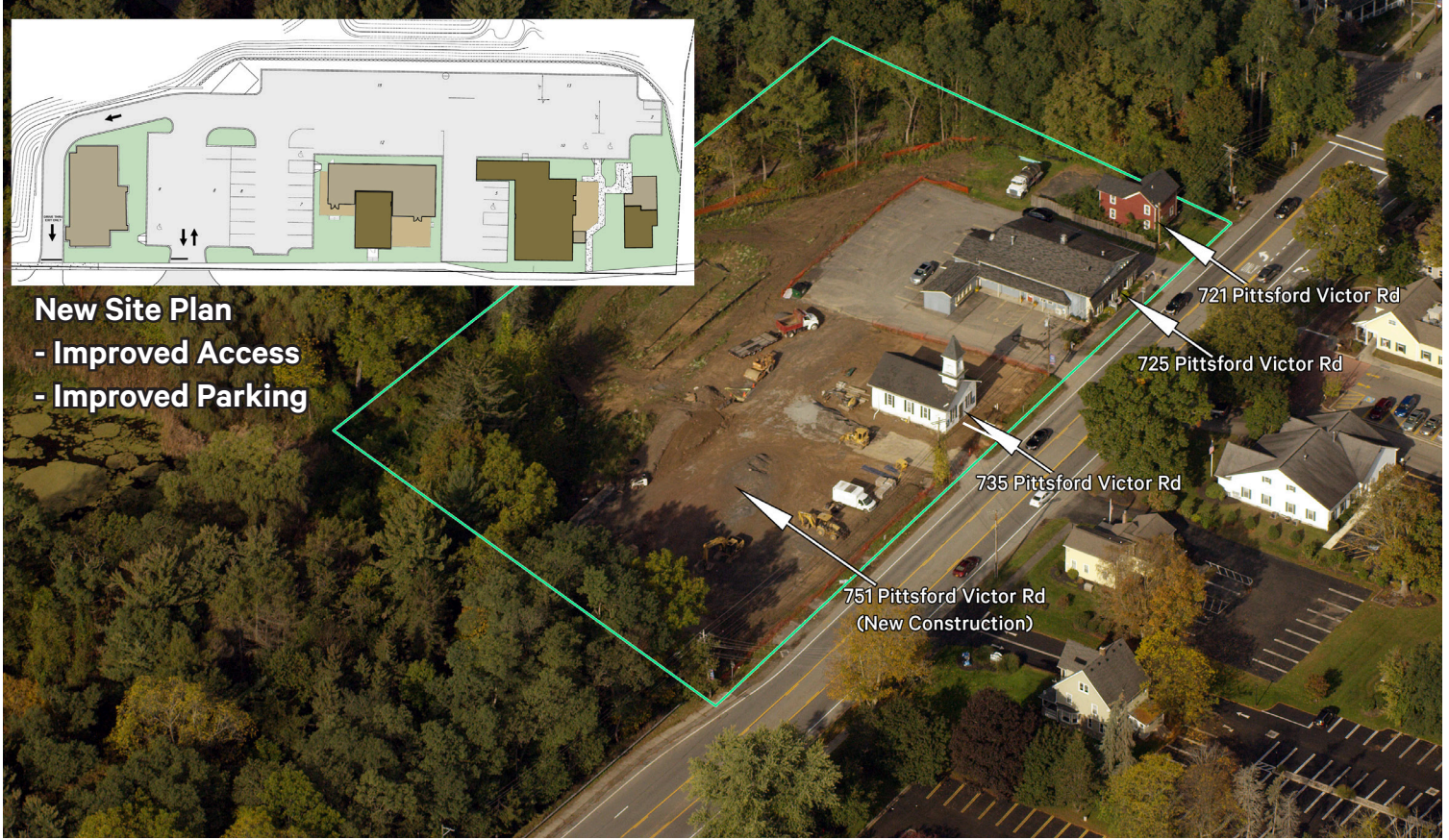


## Offering Overview

Under new ownership, mixed-use redevelopment with exposure to Route 96 in the heart of Bushnell's Basin. Unique, customizable retail and office opportunities ranging between 1,800 - 3,500 SF. Busy corridor with a daily traffic count of 14,628 vehicles, immediately accessible from I-490, surrounded by numerous businesses and services.

## Offering Details

- + Multiple Retail & Office Spaces From 1,800 To 3,500 Square Feet
- + Under New Ownership With Master Planned Redevelopment Underway
- + Available For Lease



**New Site Plan**  
- Improved Access  
- Improved Parking

## Property Overview

- + High-Visibility Office & Retail Opportunities in Bushnell's Basin, Under New Ownership
- + Master Planned Redevelopment Underway Of Entire Site, With Convenient Parking, Access and Building Improvements
- + 735 Pittsford Victor Rd - "Church" Building, Office/Retail, Expanded to 3,300 SF, Available
- + 725 Pittsford Victor Rd - "Blue" Multi-Tenant Retail Building, 1,500 SF Available
- + 721 Pittsford Victor Rd - "Red" Building, Office/Retail, Expanded To 1,800 SF, Available
- + 751 Pittsford Victor Rd - New Construction 3,500 Square Foot, Free Standing Retail Building with Drive Thru

## Contact Us

**Alex Amorese**

+1 585 784 3621

alex.amorese@cbre-rochester.com

Licensed Real Estate Salesperson

**Andrew Gearhart**

+1 585 784 3626

andrew.gearhart@cbre-rochester.com

Licensed Real Estate Salesperson

**Jaymes Keenan**

+1 585 784 3638

jaymes.keenan@cbre-rochester.com

Licensed Real Estate Salesperson

© 2024 CBRE Upstate NY, part of the CBRE Affiliate Network. All rights reserved. This information has been obtained from sources believed reliable, but has not been verified for accuracy or completeness. You should conduct a careful, independent investigation of the property and verify all information. Any reliance on this information is solely at your own risk. CBRE Upstate NY and the CBRE Upstate NY logo are service marks of CBRE Upstate NY. All other marks displayed on this document are the property of their respective owners, and the use of such logos does not imply any affiliation with or endorsement of CBRE Upstate NY. Photos herein are the property of their respective owners. Use of these images without the express written consent of the owner is prohibited.

**CBRE Upstate NY**

120 Corporate Woods, Ste 210

Rochester, NY 14623

+1 585 240 8080

www.cbre.com/rochester

**CBRE Upstate NY**

PART OF THE AFFILIATE NETWORK

# Bushnell's Basin Retail & Office

721-751 Pittsford-Victor Road | Perinton, NY 14534

# For Lease



## Contact Us

### Alex Amorese

+1 585 784 3621

[alex.amorese@cbre-rochester.com](mailto:alex.amorese@cbre-rochester.com)

Licensed Real Estate Salesperson

### Andrew Gearhart

+1 585 784 3626

[andrew.gearhart@cbre-rochester.com](mailto:andrew.gearhart@cbre-rochester.com)

Licensed Real Estate Salesperson

### Jaymes Keenan

+1 585 784 3638

[jaymes.keenan@cbre-rochester.com](mailto:jaymes.keenan@cbre-rochester.com)

Licensed Real Estate Salesperson

© 2024 CBRE Upstate NY, part of the CBRE Affiliate Network. All rights reserved. This information has been obtained from sources believed reliable, but has not been verified for accuracy or completeness. You should conduct a careful, independent investigation of the property and verify all information. Any reliance on this information is solely at your own risk. CBRE Upstate NY and the CBRE Upstate NY logo are service marks of CBRE Upstate NY. All other marks displayed on this document are the property of their respective owners, and the use of such logos does not imply any affiliation with or endorsement of CBRE Upstate NY. Photos herein are the property of their respective owners. Use of these images without the express written consent of the owner is prohibited.

### CBRE Upstate NY

120 Corporate Woods, Ste 210

Rochester, NY 14623

+1 585 240 8080

[www.cbre.com/rochester](http://www.cbre.com/rochester)

# CBRE Upstate NY

PART OF THE AFFILIATE NETWORK