

# CHELMSFORD, MA RETAIL SPACE AVAILABLE FOR LEASE



## SUMMER STREET CROSSING

7 SUMMER STREET  
CHELMSFORD, MA 01824

Summer Street Crossing is a 57,600 S.F. Shopping Center located in downtown Chelmsford with close proximity to Routes 495 and 110. The Shoppes at Summer Street Crossing include many service-oriented retailers including home improvements, fitness and wellness services, specialty stores, and an array of restaurant options, making it a one-stop shop! The location, visibility, and strong, successful tenant mix makes this the perfect retail opportunity for your business!

- ✓ 57,600 S.F. Plaza
- ✓ 2,400 S.F. \$23/S.F. NNN
- ✓ Diverse Tenant Mix
- ✓ High Visibility
- ✓ Ample Parking

**THE STRATTON GROUP LLC**

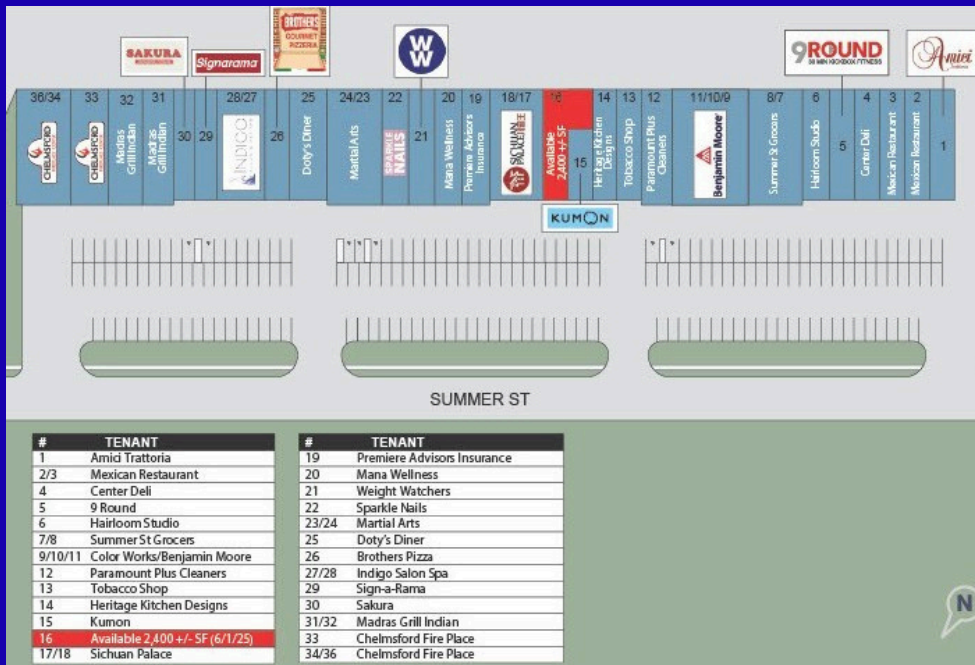
[TheStrattonGroup@hotmail.com](mailto:TheStrattonGroup@hotmail.com)  
C: 508-922-2001 W: 508-224-0800  
81 John Alden Rd. Plymouth, MA 02360

# SUMMER ST. CROSSING

7 SUMMER ST CHELMSFORD,  
MA, 01824

2,400 S.F. Retail Space Available for  
Lease

DEMOGRAPHICS	3 MILES	5 MILES	10 MILES
POPULATION	59,500	183,724	425,607
HOUSEHOLDS	21,516	66,876	155,553
AVG H.H INCOME	\$133,159	\$113,084	\$136,745



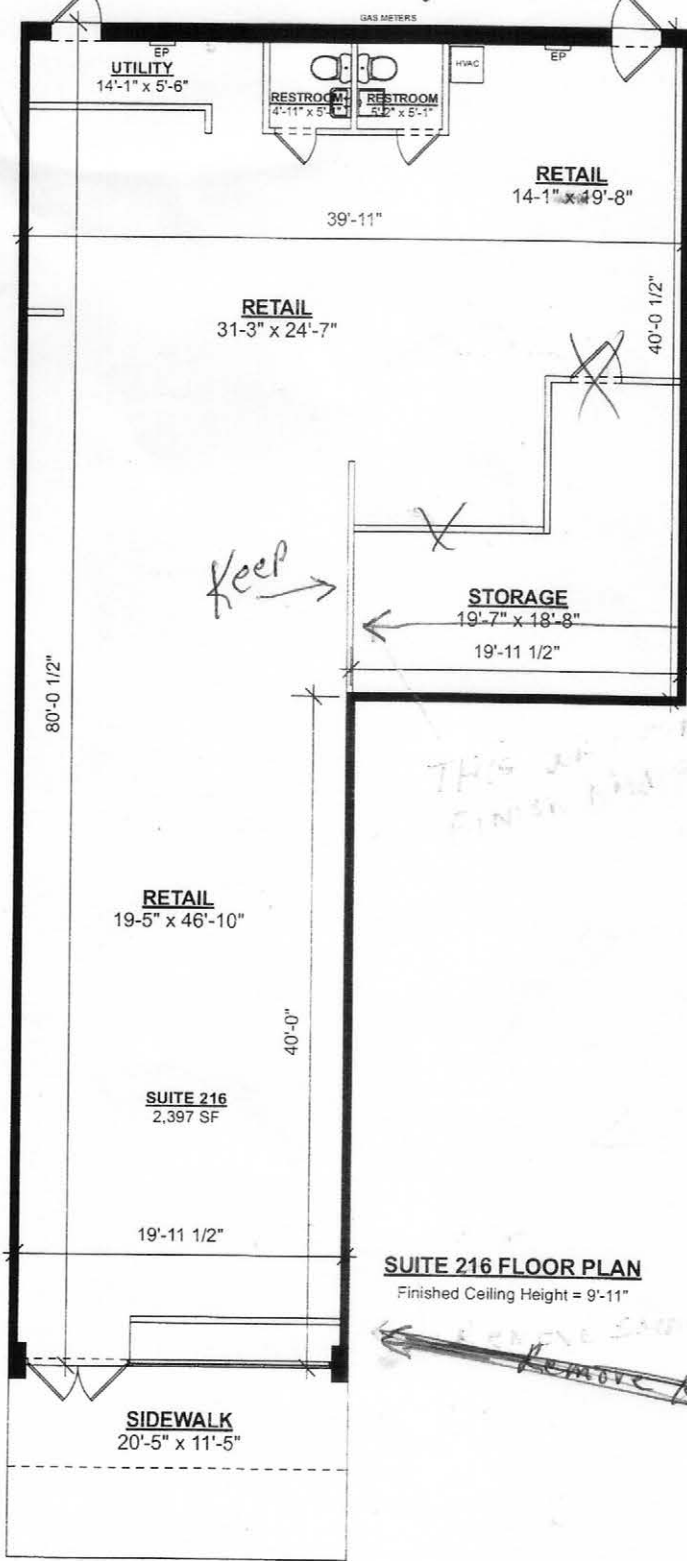
## \*Tenants Include:

- Summer St Grocers
- Benjamin Moore
- Madras Grill
- Indigo Salon & Day Spa
- and many more!

Replace  
1 BACK  
DOOR +  
FRAME

INSTALL  
ONE ADA  
BATHRM

1. Remove All Floorings
2. Replace LEFT Side BACK DOOR AND FRAME
3. Remove All Shelves
4. (1) ADA BATHRM
5. NEW BATHRM Floor Toilet, Sink, Doors MIRROR, LIGHT, FAN ACCESSORIES



6. Remove All old ELEC
7. Remove EXISTING LIGHTINGS + Replace w/NEW 2X4 Led LIGHTS 12 IN OPEN FLOOR AND ONE IN CA BATHRM
8. Finish BACK Side of WALL
9. PATCH + PRIME ALL WALLS
10. Smooth Concrete Floor
11. INSTALL NEW EMERG/ EXIT LIGHTS.

**SUITE 216 FLOOR PLAN**  
Finished Ceiling Height = 9'-11"



EXISTING CONDITIONS FLOOR PLANS			1
JOB NO.	DATE: JUNE 2025	SCALE: As Noted	
<b>NATIONAL FLOOR PLANS</b> 398 COLUMBUS AVENUE SUITE 100 BOSTON MA 02116 800.328.0217 TEL		<b>7 SUMMER STREET, UNIT 16</b> CHELMSFORD, MA	