



3100 Quail Springs

OKLAHOMA CITY, OKLAHOMA 73134

CBRE



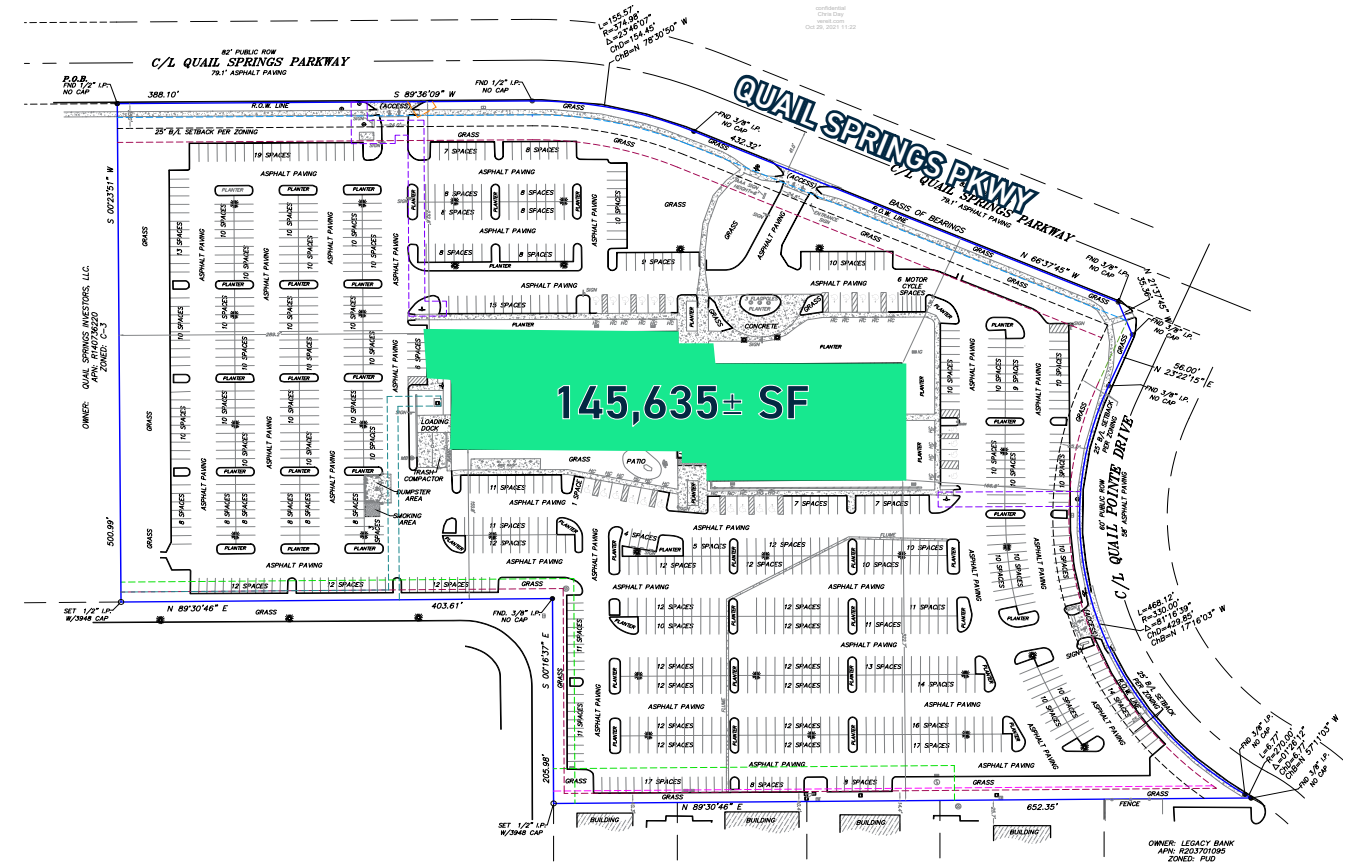
Property Highlights

Building Size	145,635± SF
Available Space	26,000± - 145,635± RSF
Land Size	12.10± AC
Zoning	C-3
Year Built	2009
Class	B
Stories	(3) Three
Tenancy	Single or Multi-Tenant
Elevators	(2) Two
Parking	990 Surface Spaces, 26 ADA Spaces
Loading Dock	Yes
Rental Rate Sales Price	\$22.00 PSF FSG Contact Broker
Annual Rate Increase	2.5%

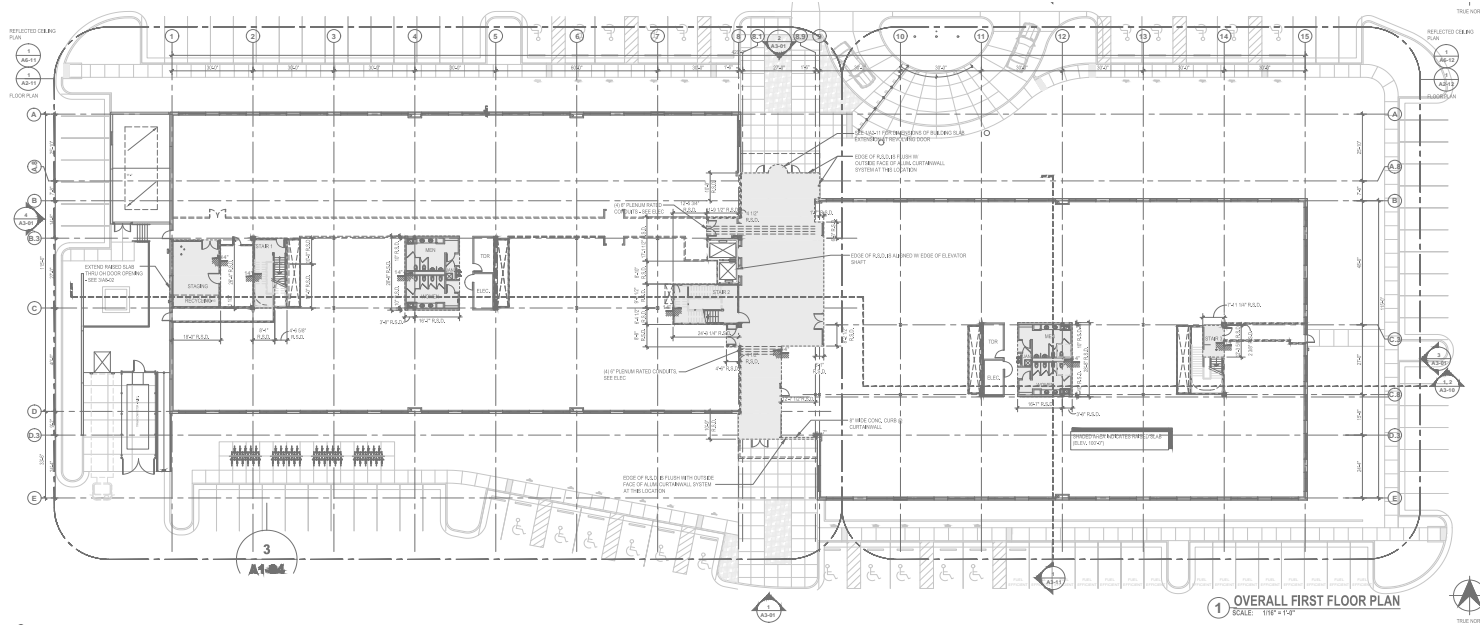
Location Overview

3100 QUAIL SPRINGS

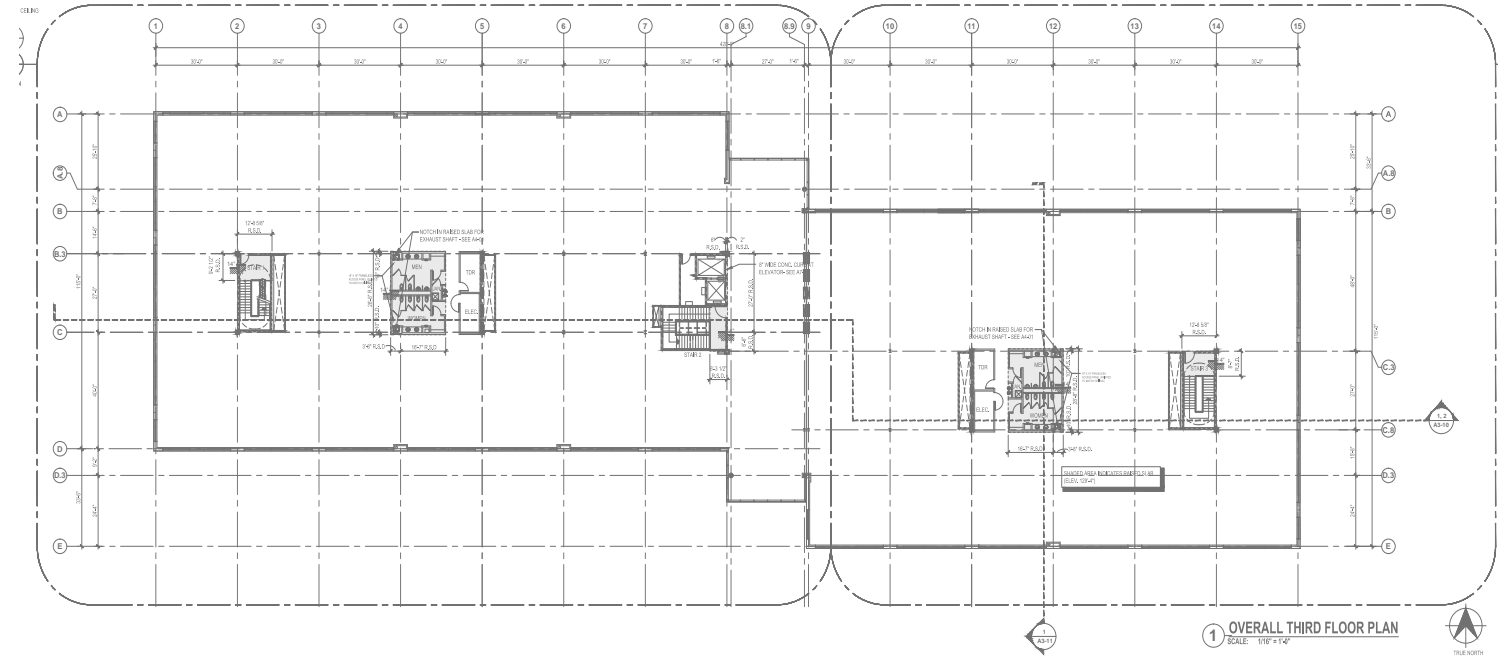
- Ideally located in Northwest OKC, the prestigious Quail Springs Office Park offers easy access to key routes such as John Kilpatrick Turnpike, Portland Avenue, Lake Hefner Parkway, and Broadway Extension.
- Nestled in the Memorial Road Corridor, it is surrounded by multiple retail and dining options and significant attractions like Quail Springs Mall, The Oklahoma Spine Hospital, and Lifetime Fitness.
- The property boasts 24-hour access and security, ample parking and standout signage opportunities.
- LEED Silver Certification, opportunity zone status, and prime location in Quail Springs Office Park makes a prime leasing choice for office tenants in the thriving Northwest Oklahoma City area.



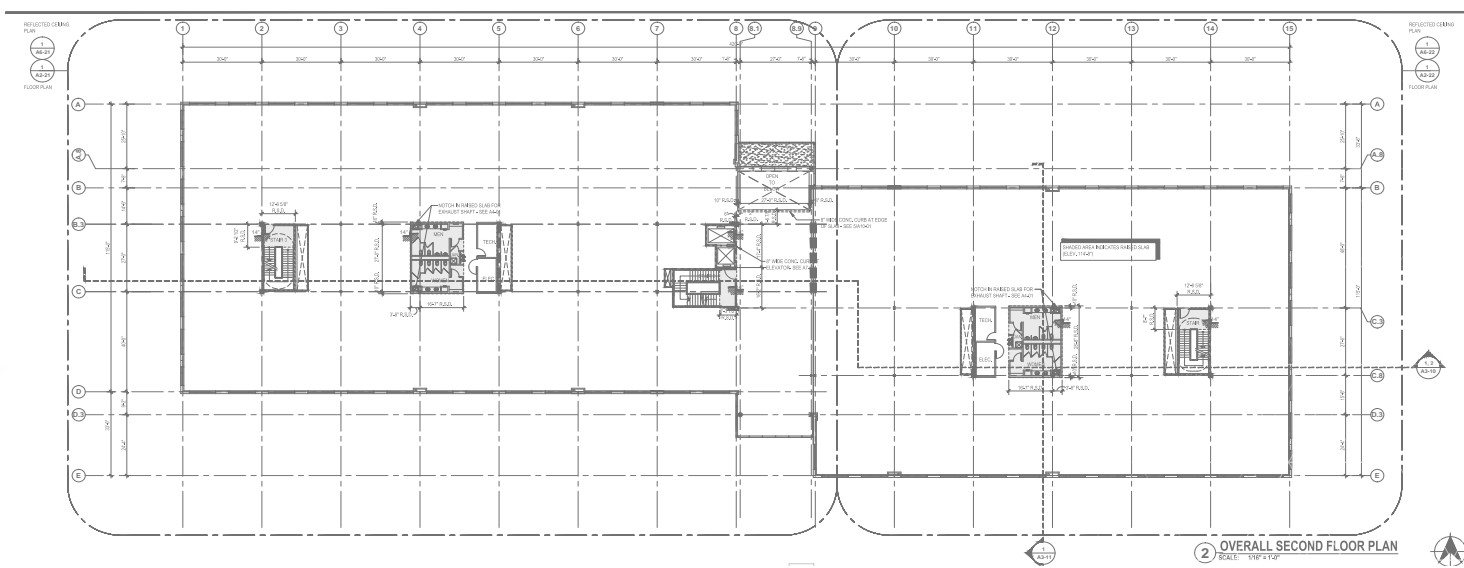
FLOOR ONE 48,755± SF



FLOOR THREE 49,176± SF



FLOOR TWO 49,176± SF





Contact Us

CBRE

AMY DUNN, CCIM

First Vice President
+ 1 405 209 3656
amy.dunn@cbre.com

TOM LANGE, SIOR

Vice President
+ 1 405 607 6249
thomas.lange@cbre.com

JIM AUSTIN

Vice President
+ 1 405 607 6252
jim.austin@cbre.com

SCAN
QR CODE FOR
ADDITIONAL
PROPERTY PHOTOS

