

2507 ROUTE 22 W

SCOTCH PLAINS, NEW JERSEY



FLEX BUILDING FOR SALE —
WITH 2,000 SQUARE FOOT SPACE AVAILABLE FOR LEASE

WAYNE KASBAR

VICE PRESIDENT

732 807 0330

wayne.kasbar@colliers.com

Licensed Salesperson

Colliers

ROBERT STEPAK

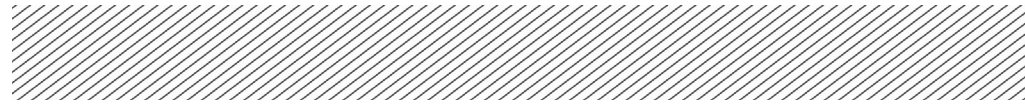
SENIOR SALES REPRESENTATIVE

416 305 4993

robert.stepak@colliers.com

Licensed Salesperson

Vacant first floor space that can be used as retail, office or flex.



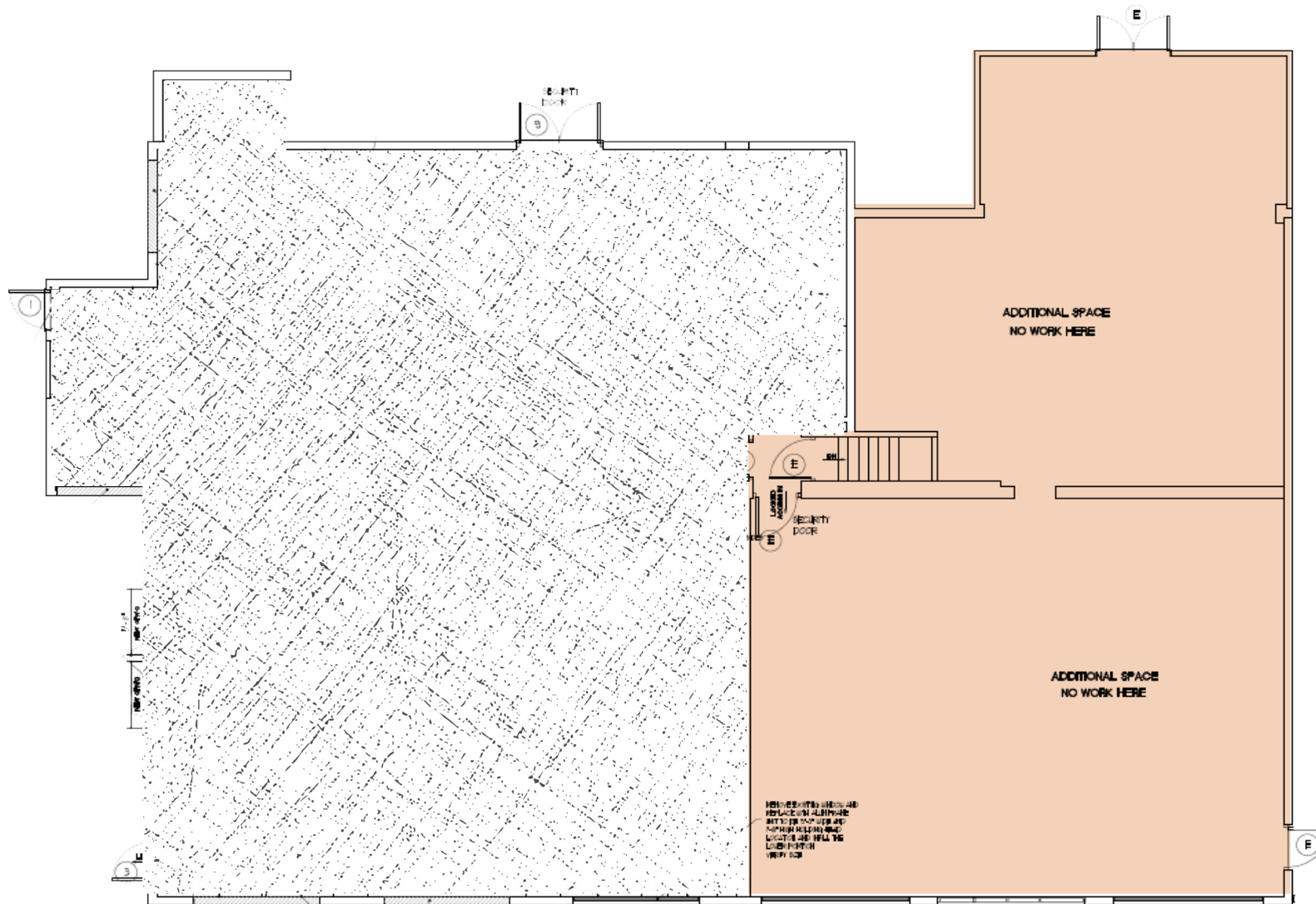
7,200 SQUARE FOOT SPACE FOR SALE & LEASE

- + First Floor: existing cannabis dispensary
- + Second Floor: existing cannabis manufacturing company
- + No competitive cannabis uses will be considered, but complimentary cannabis uses will be considered
- + Zoning: B-3 ([Click for Zoning Details](#))
- + Land: .90 Acres
- + +/- 40 parking spaces (5/1000)
- + Retail Neighbors: Panera, Home Depot, Home Sense, Walmart, Chipotle, Chick Fil A, Starbucks, TJ Maxx, DSW, Dicks, Aldi, Lidl, Ulta, City MD, Kohl's, & Shop Rite
- + Asking Sale Price: \$3,240,000 @ 10% CAP
- + Asking Lease Price: Call for Pricing

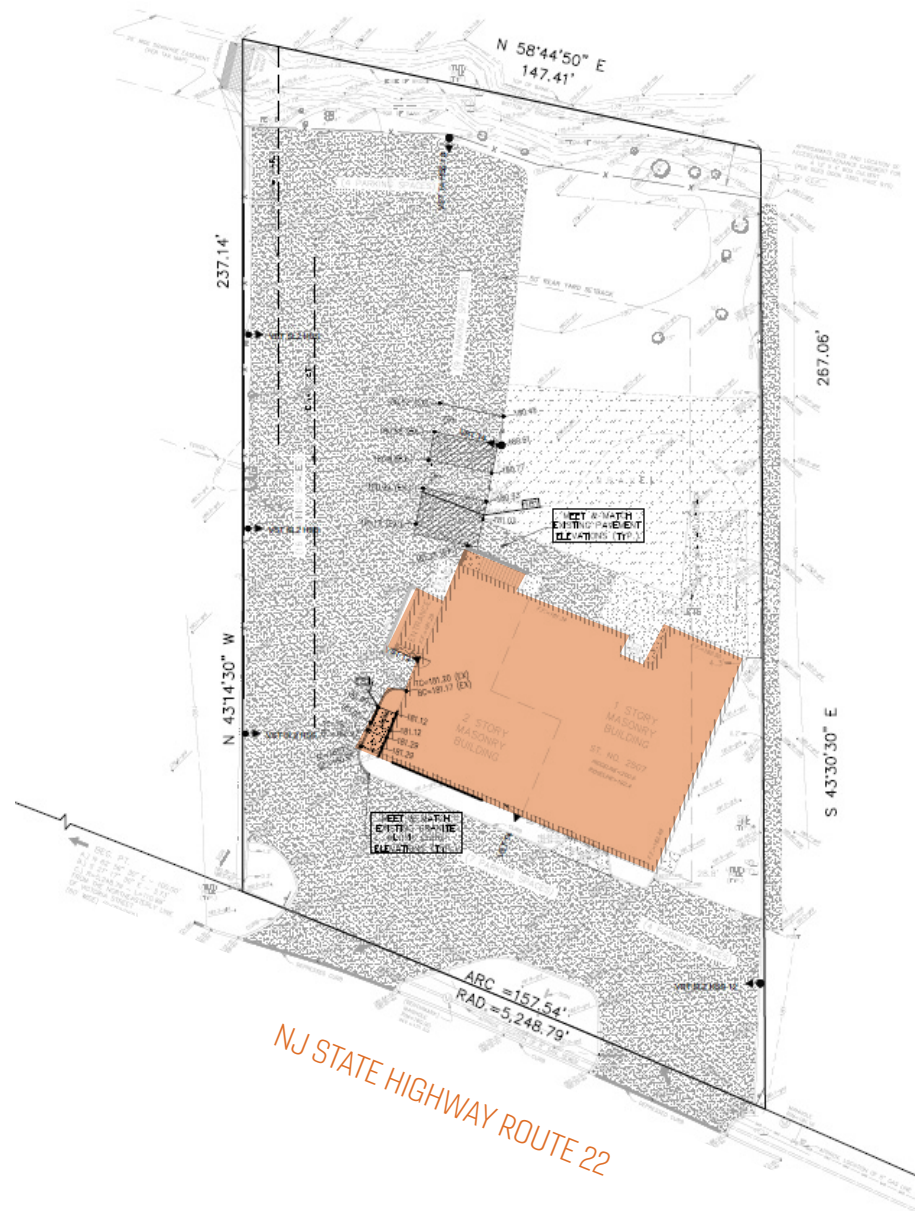
Colliers

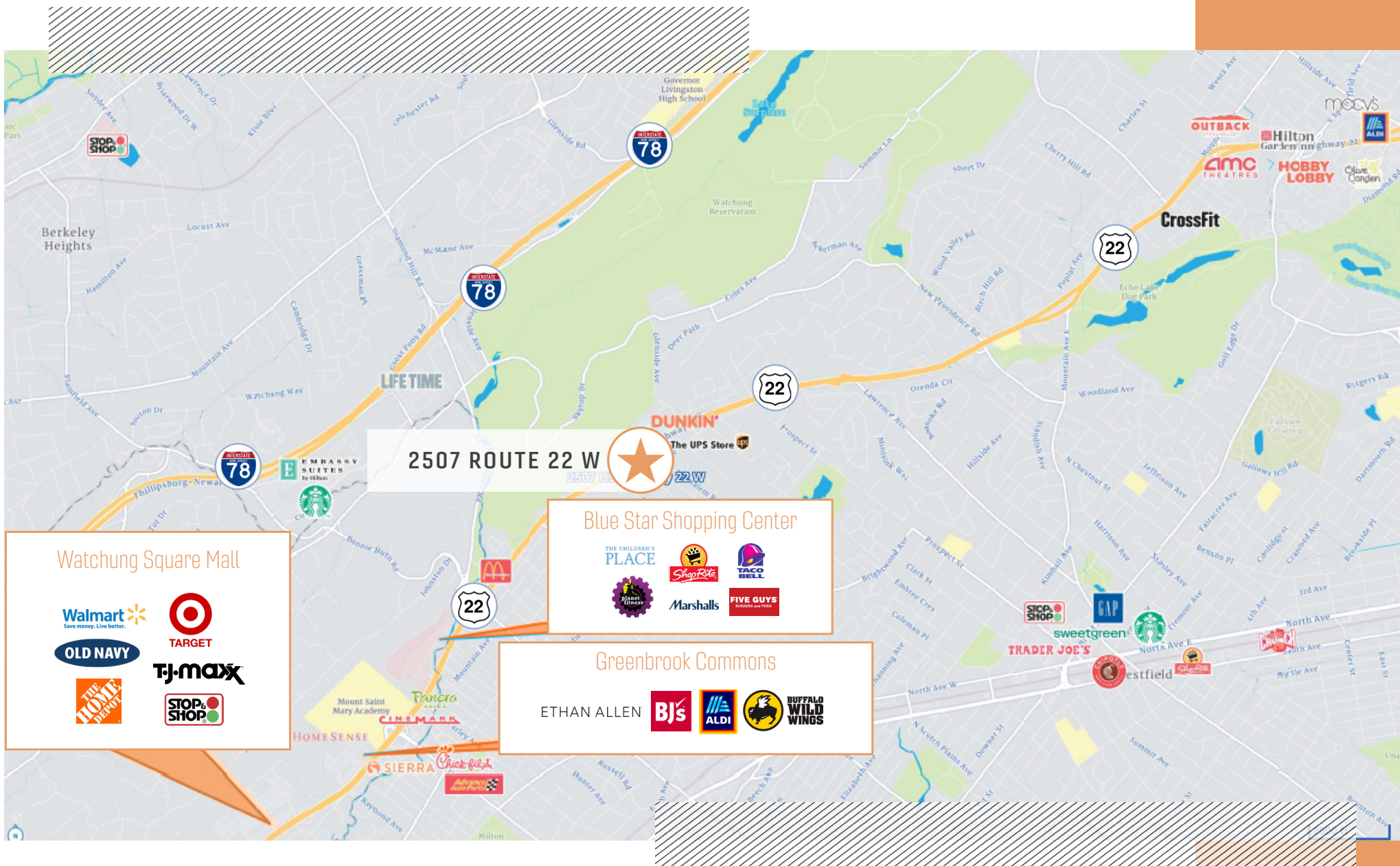


FIRST FLOOR PLAN
+ 5,000 SQUARE FEET



PROPERTY SITE PLAN





LOCAL SHOPPING CENTERS:

+ Watchung Commons – 1680 US 22 • Watchung Mall – 1511 US 22 • Greenbrook Commons – 1601 Rt 22

DEMOGRAPHICS:

- + Daytime Population: **1 MILE:** 10,360 • **3 MILES:** 106,492 • **5 MILES:** 263,306
- + Avg. Household Income: **1 MILE:** \$173,990 • **3 MILES:** \$106,492 • **5 MILES:** \$263,306
- + Daily Traffic Volume: **US 22 @ Victor St:** 46,600

Colliers

2507 ROUTE 22 W

SCOTCH PLAINS, NEW JERSEY



WAYNE KASBAR

VICE PRESIDENT

732 807 0330

wayne.kasbar@colliers.com

Licensed Salesperson

ROBERT STEPAK

Senior Sales Representative

416 305 4993

robert.stepak@colliers.com

Licensed Salesperson

COLLIERS INTERNATIONAL NJ LLC
10 WOODBRIDGE CENTER DRIVE, SUITE 1010
WOODBIDGE, NJ 07095
732 807 0400

NO REPRESENTATION IS MADE AS TO THE ACCURACY OF THE INFORMATION FURNISHED HEREIN AND SAME IS SUBMITTED SUBJECT TO ERRORS, OMISSIONS, CHANGE OF PRICES, RENTAL, OR OTHER CONDITIONS, PRIOR SALE, LEASE, SUBLEASE, AND/OR WITHDRAWAL WITHOUT NOTICE. WHILE EVERY ATTEMPT IS MADE TO ENSURE ACCURACY, THE FLOOR PLAN(S) IS FOR GUIDANCE ONLY. THE MEASUREMENTS, DIMENSIONS, SPECIFICATIONS, AND OTHER DATA SHOWN ARE APPROXIMATE AND MAY NOT BE TO SCALE. WE ASSUME NO RESPONSIBILITY FOR THE ACCURACY OF THE FLOOR PLAN(S) OR FOR ANY ACTION TAKEN IN RELIANCE THEREON. THE FLOOR PLAN(S) DO NOT CREATE ANY REPRESENTATION, WARRANTY OR CONTRACT. ALL PARTIES SHOULD CONSULT A PROFESSIONAL, SUCH AS AN ARCHITECT, TO VERIFY THE INFORMATION CONTAINED HEREIN. THE FURNISHING OF THIS INFORMATION SHALL NOT BE DEEMED A HIRING. A COMMISSION IN ACCORDANCE WITH OUR PRINCIPAL'S SCHEDULE OF RATES AND CONDITIONS WILL BE PAID TO THE PROCURING BROKER WHO EXECUTES OUR OR OUR PRINCIPAL'S BROKERAGE AGREEMENT, SUBJECT TO A FULLY CONSUMMATED TRANSACTION UPON TERMS AND CONDITIONS ACCEPTABLE TO OUR PRINCIPAL. COLLIERS INTERNATIONAL NJ LLC