

FOR LEASE OR SALE

1236 JUNGERMANN RD. ST. PETERS, MO 63376

475 SF - 2,445 SF AVAILABLE



McKELVEY PROPERTIES
building relationships . creating wealth

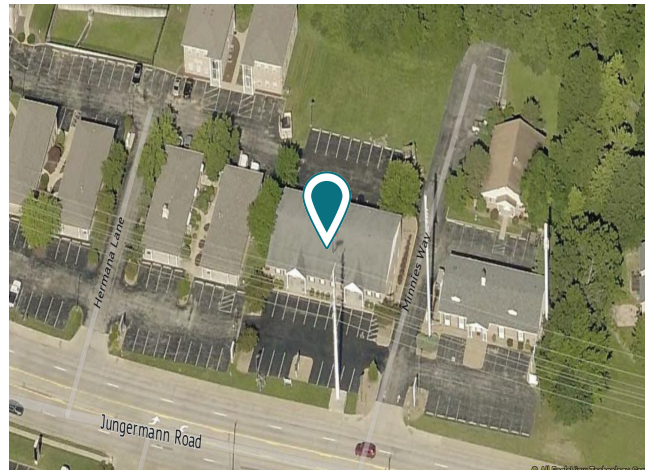


PROPERTY FEATURES:

- 10,000 SF MULTI-TENANT RETAIL/OFFICE BUILDING IN A PRIME ST. PETERS LOCATION.
- FLEXIBLE SUITE SIZES 475 SF-2,445 SF AVAILABLE
- GREAT FOR OWNER USER OR INVESTMENT
- HIGHLY VISIBLE ALONG JUNGERMANN ROAD NEAR HWY 364/94 WITH STRONG DAILY TRAFFIC COUNTS
- PERFECT FOR MEDICAL, PROFESSIONAL OFFICE, RETAIL, OR ANY SERVICE-ORIENTED BUSINESSES
- GENEROUS ON-SITE PARKING FOR TENANTS AND CUSTOMERS
- SURROUNDED BY THRIVING RESIDENTIAL NEIGHBORHOODS AND NATIONAL RETAILERS INCLUDING SCHNUCKS, WALGREENS, AND CVS
- TENANT IMPROVEMENT OPTIONS AVAILABLE
- Unit F, G and H3 can be combined for 2,445 SF

LOWER LEVEL:

Suite F: 1,250 SF
Suite G: 675 SF
Suite H2 475 SF
Suite H3: 520 SF (no windows)



LEASE RATE UNITS F:
\$15.00 SF GROSS
(TENANT PAYS UTILITIES)

LEASE RATE UNITS:
G \$1,200 PER MO FULL SERVICE
H2 \$700 PER MO FULL SERVICE
H3 \$650 PER MO FULL SERVICE

Contact

KIM RICHTER
314.333.9844 krichter@mckelveyproperties.com



FOR LEASE OR SALE

1236 JUNGERMANN RD. ST. PETERS, MO 63376

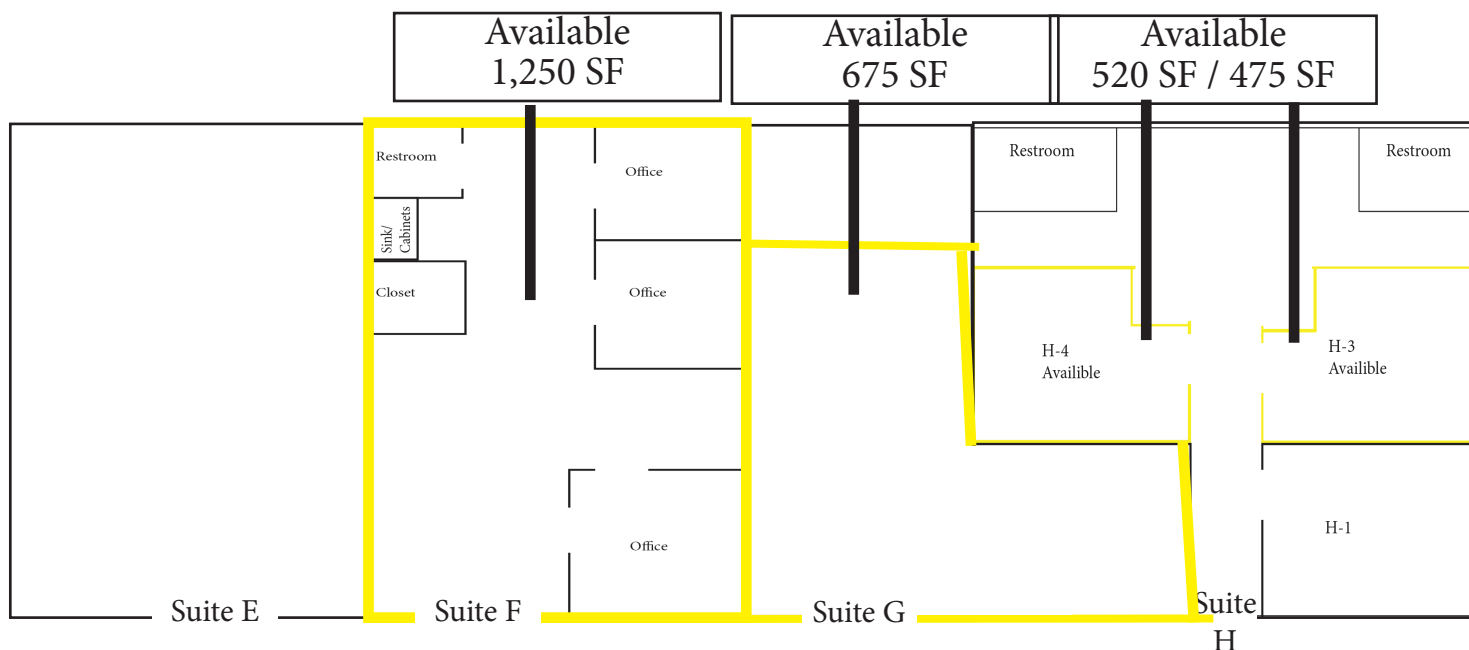
475 SF - 2,445 SF AVAILABLE



McKELVEY PROPERTIES
building relationships . creating wealth

AVAILABLE SPACE

475 SF - 2,445 SF



BACK / LOWER LEVEL

MP

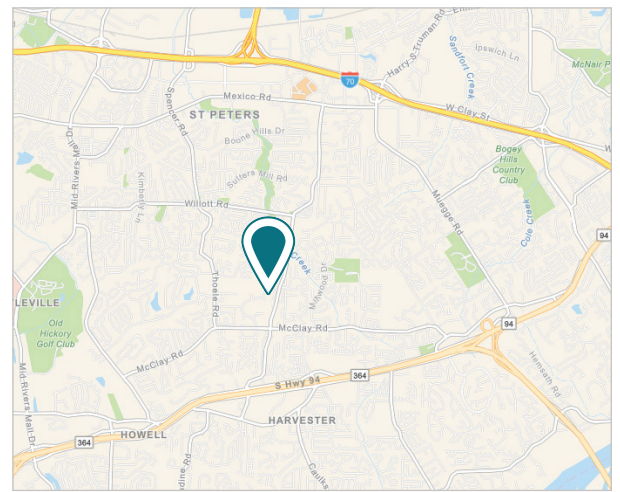
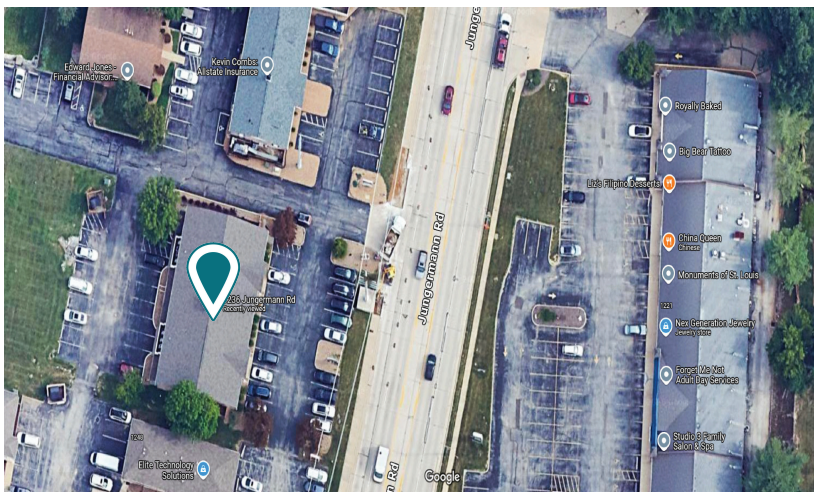
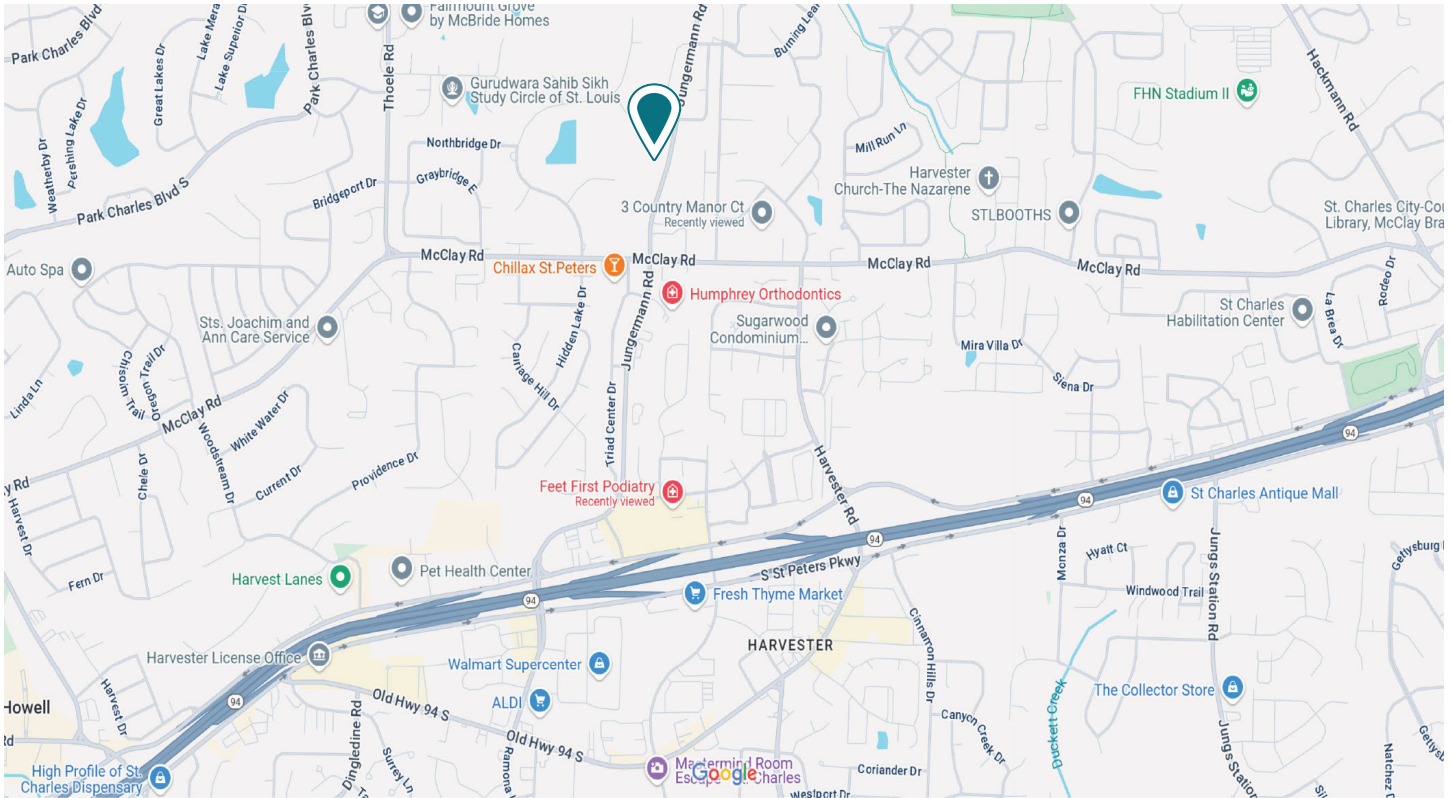
FOR LEASE OR SALE

1236 JUNGERMANN RD. ST. PETERS, MO 63376

475 SF - 2,445 SF AVAILABLE



McKELVEY PROPERTIES
building relationships . creating wealth



BUILDING SF
10,000 SF
0.58 AC

ZONING
C

TAXES (2024)
\$15,635.98

Contact

KIM RICHTER

314.333.9844 krichter@mckelveyproperties.com



McKelvey Properties | 17280 N Outer 40 Rd, Suite 201 | Chesterfield, MO 63005 | 636.669.9111 | www.McKelveyProperties.com

No expressed or implied warranty or representation is made as to the accuracy of the information contained herein. This property is submitted subject to errors, omissions, change of price, withdrawal without notice, prior lease or sale and any other listing conditions imposed by the principals.