



**58,800 SF AVAILABLE
FOR SUBLEASE**

PALMETTO INDUSTRIAL PARK

1110 17TH STREET EAST | PALMETTO, FL 34221

FOR MORE INFORMATION, CONTACT:

LISA ROSS, SIOR
Executive Director
+1 813 760 3209
lisa.ross@cushwake.com

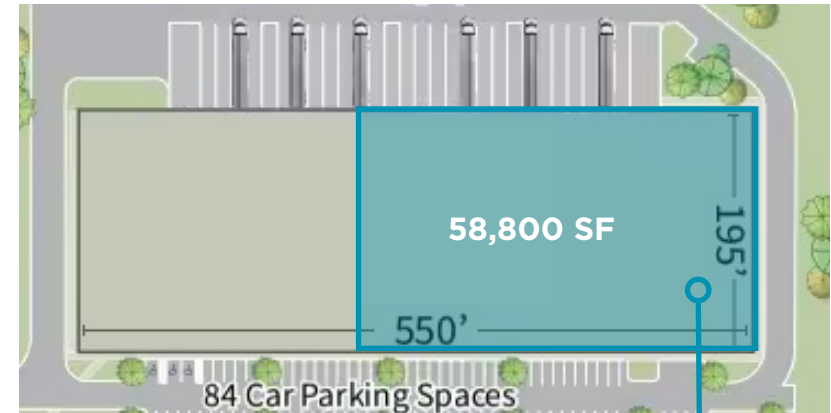
TREY CARSWELL, SIOR
Executive Director
+1 813 230 6131
trey.carswell@cushwake.com

SAM KOROLOS
Director
+1 704 989 1327
sam.korolos@cushwake.com

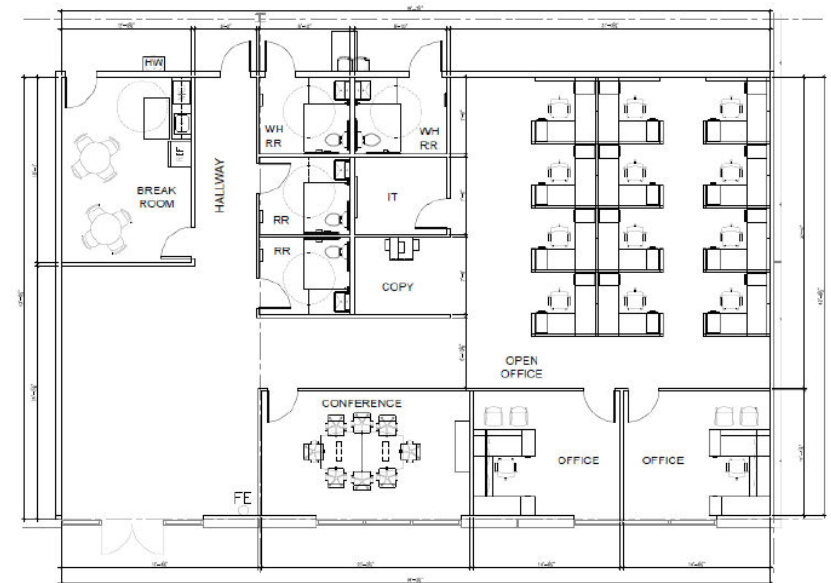
MELISSA WATTERWORTH
Senior Associate
+1 813 599 2190
melissa.watterworth@cushwake.com

PROPERTY FEATURES

AVAILABLE SF	58,800 SF
OFFICE SF	3,092 SF
OUTDOOR STORAGE	0.4 AC
CLEAR HEIGHT	32'
TRUCK COURT	135'
LOADING	Fourteen (14) Dock High Doors One (1) Drive-In Ramp
COLUMN SPACING	50' X 49'
SPRINKLERS	ESFR Sprinklers
POWER	400 AMPS, 480 Volt, 3-Phase
WAREHOUSE FLOORS	6" Slab, 4,000 PSI
AVAILABLE	Within 60 Days
SUBLEASE EXPIRATION	5/31/2033



3,092 SF OFFICE





BUILDING 3

FOR MORE INFORMATION, CONTACT:

LISA ROSS, SIOR

Executive Director
+1 813 760 3209
lisa.ross@cushwake.com

TREY CARSWELL, SIOR

Executive Director
+1 813 230 6131
trey.carswell@cushwake.com

SAM KOROLOS

Director
+1 704 989 1327
sam.korolos@cushwake.com

MELISSA WATTERWORTH

Senior Associate
+1 813 599 2190
melissa.watterworth@cushwake.com

NICK DEVITO, SIOR

Partner
+1 941 928 1243
nick@ian-black.com

BRIE TULP

Sales Associate
+1 551 206 4390
brie@ian-black.com

IAN BLACK
REAL ESTATE

