

**RETAIL SPACE FOR LEASE**  
**357 SPOTSWOOD ENGLISHTOWN RD MONROE NJ 08831**



**MID-STATE**  
**COMMERCIAL**

MID STATE REALTY



**John Profaci**

**Broker/Owner**

**Office : 732-251-8900**

**Cell : 908-692-5419**

**Email : jkprofaci@aol.com**

**391 Spotswood Englishtown Rd**

**Monroe Twp. NJ 08831**

**Prime Retail Space for Lease – Spotswood Englishtown Rd (CR 613)**

**Key Features:**

- ✓ **High visibility on a well-traveled county roadway**
- ✓ **Flexible unit sizes to suit your business needs**
- ✓ **Ample parking for customers and staff**
- ✓ **Close to residential neighborhoods and major Hwys.**
- ✓ **Excellent signage opportunities**





## Location

## Ideal uses

**Newly divided and clean**

**1 FLOOR PLAN**  
SCALE: 1/4" = 1'-0"

38'-5 1/2"

TENANT SPACE 1  
AREA = 1,200 S.F.

1,200 Sq. Ft

TENANT SPACE 2  
AREA = 1,200 S.F.

1,200 Sq. Ft

PROPOSED DEMISING WALL 8" METAL STUDS W/ 5/8" FIRE RATE GYPSUM BOARD

TENANT SPACE 3  
AREA = 1,200 S.F.

1,200 Sq. Ft

PROPOSED DEMISING WALL 8" METAL STUDS W/ 5/8" FIRE RATE GYPSUM BOARD

TENANT SPACE 4  
AREA = 1,200 S.F.

1,200 Sq. Ft

PROPOSED DEMISING WALL 8" METAL STUDS W/ 5/8" FIRE RATE GYPSUM BOARD

TENANT SPACE 5  
AREA = 2,447 S.F.

2,447 Sq. Ft

ALTERNATE DEMISING WALL 8" METAL STUDS W/ 5/8" FIRE RATE GYPSUM BOARD

MONROE PARK PHARMACY  
AREA = 3,647 S.F.

18'-0 1/4" 18'-0" 18'-0" 18'-0" 38'-0 1/4" 38'-0 3/4"

0 2' 4' 8'

1,200 S

PROJECT NAME AND ADDRESS:

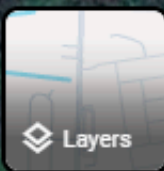
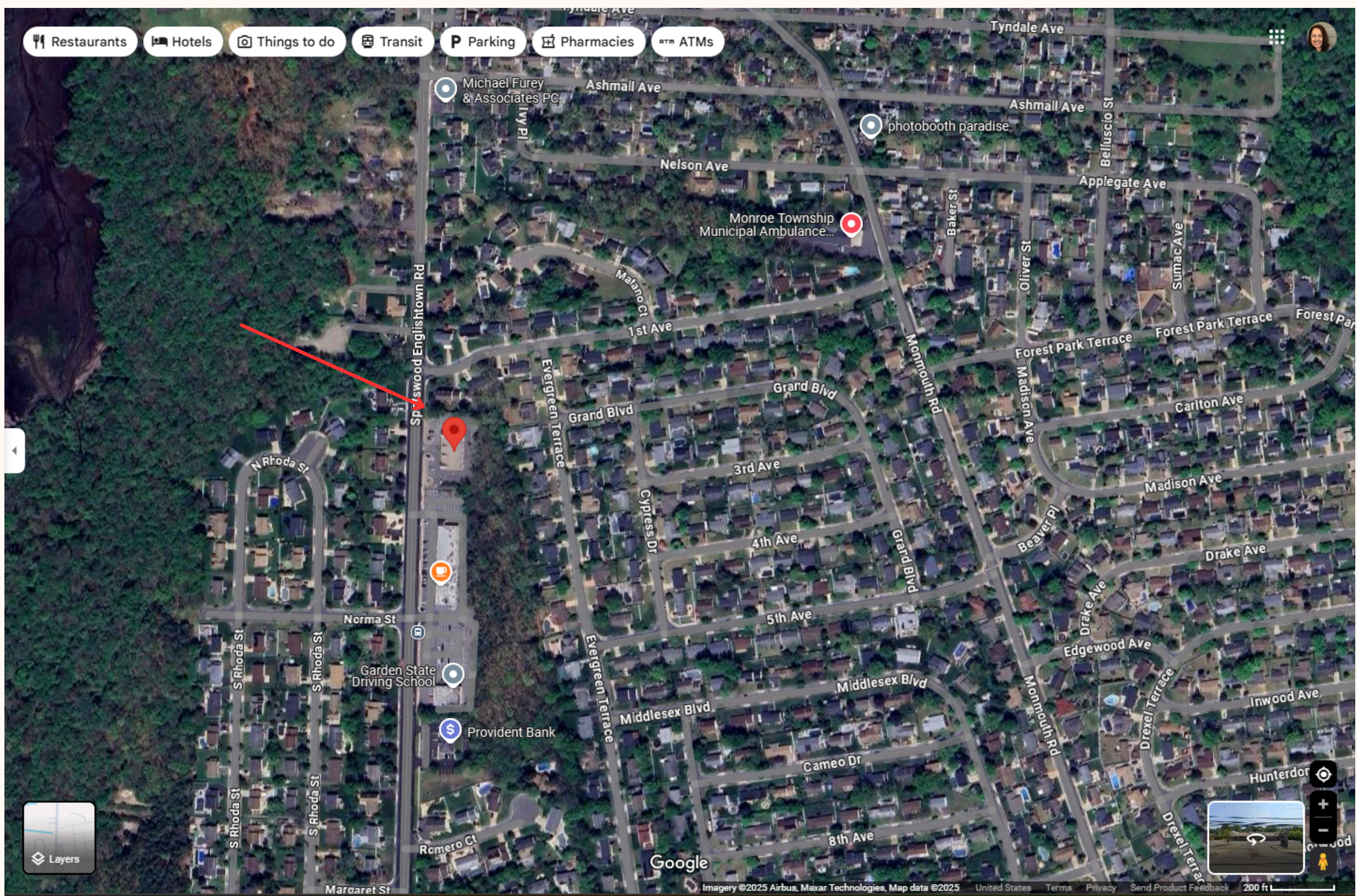
DRAWING NAME:

**RETAIL SPACE FOR LEASE**  
**357 SPOTSWOOD ENGLISHTOWN RD MONROE NJ 08831**



**LEASE PRICE : \$18.00 PER SQ. FT. + \$6.00 Sq. Ft. cam**





Google