



# 2500 W 7TH ST

WESTLAKE MACARTHUR PARK / LOS ANGELES

## FOR LEASE

±6,937  
OFFICE,

TOTAL RSF  
RETAIL,

AVAILABLE :  
SHOWROOM





Completed in 1924 in the Spanish Colonial Revival style by architects Morgan, Walls & Clements, 2500 W 7th St is one of MacArthur Park’s most architecturally stunning buildings. A recently completed restoration and building modernization underscores the building’s historic character.

Tenants at 2500 W 7th St include MacArthur Park mainstays **Aardvark Letterpress** and paper supply shop **McManus & Morgan**, as well as architecture and design group **Commune Design**, production group **Goode Films**, and new neighborhood coffee shop **Jurassic Magic**.



**Available Space**

Retail C	±749 RSF
Retail D	±743 RSF
Office B / 2nd Floor	±1,731 RSF
Office C / 2nd Floor	±2,066 RSF
Office D / 2nd Floor	±1,648 RSF

Office B + C + D Can be Combined for Up to ±5,445 RSF

**Rent**

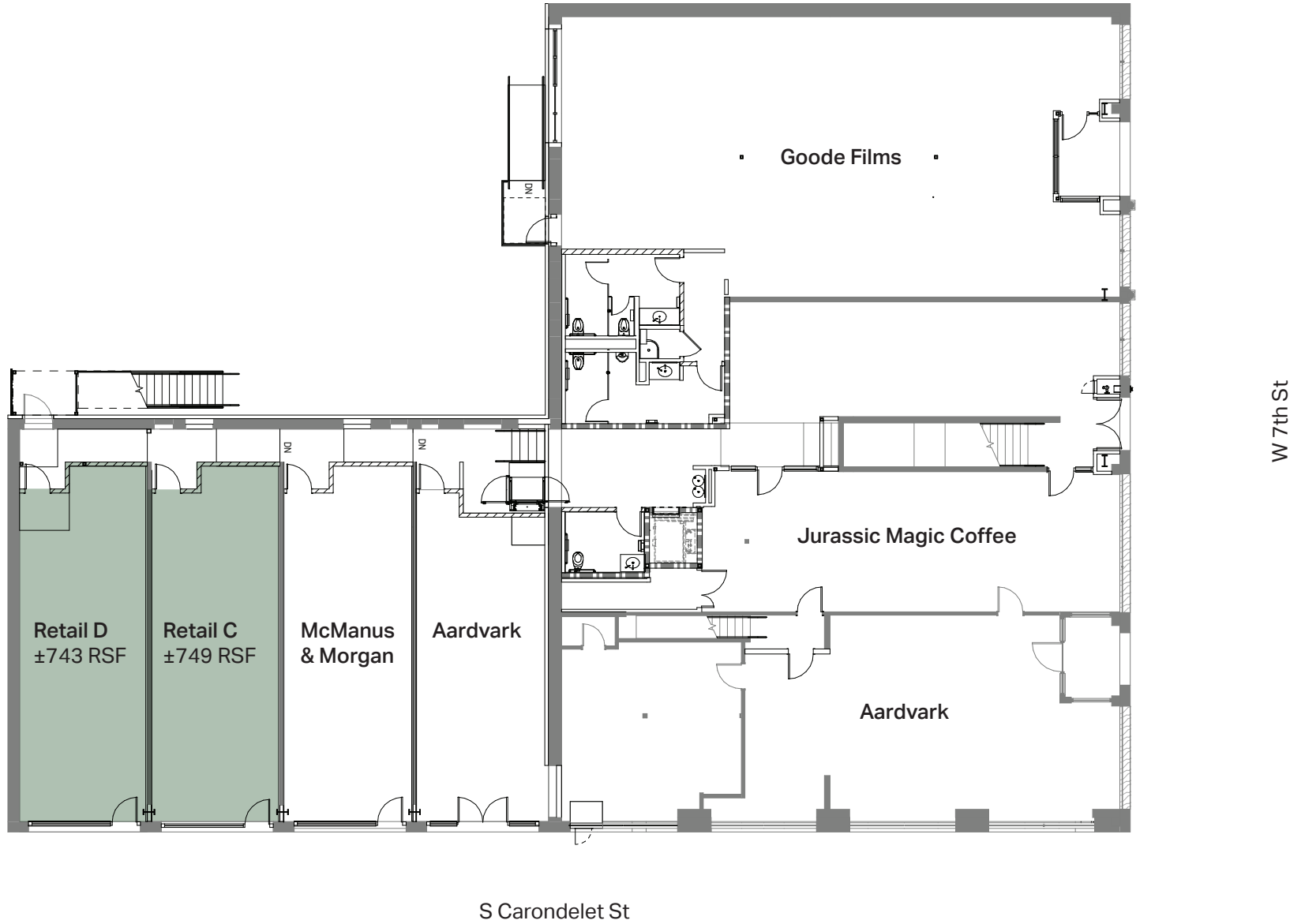
Call Broker for Details

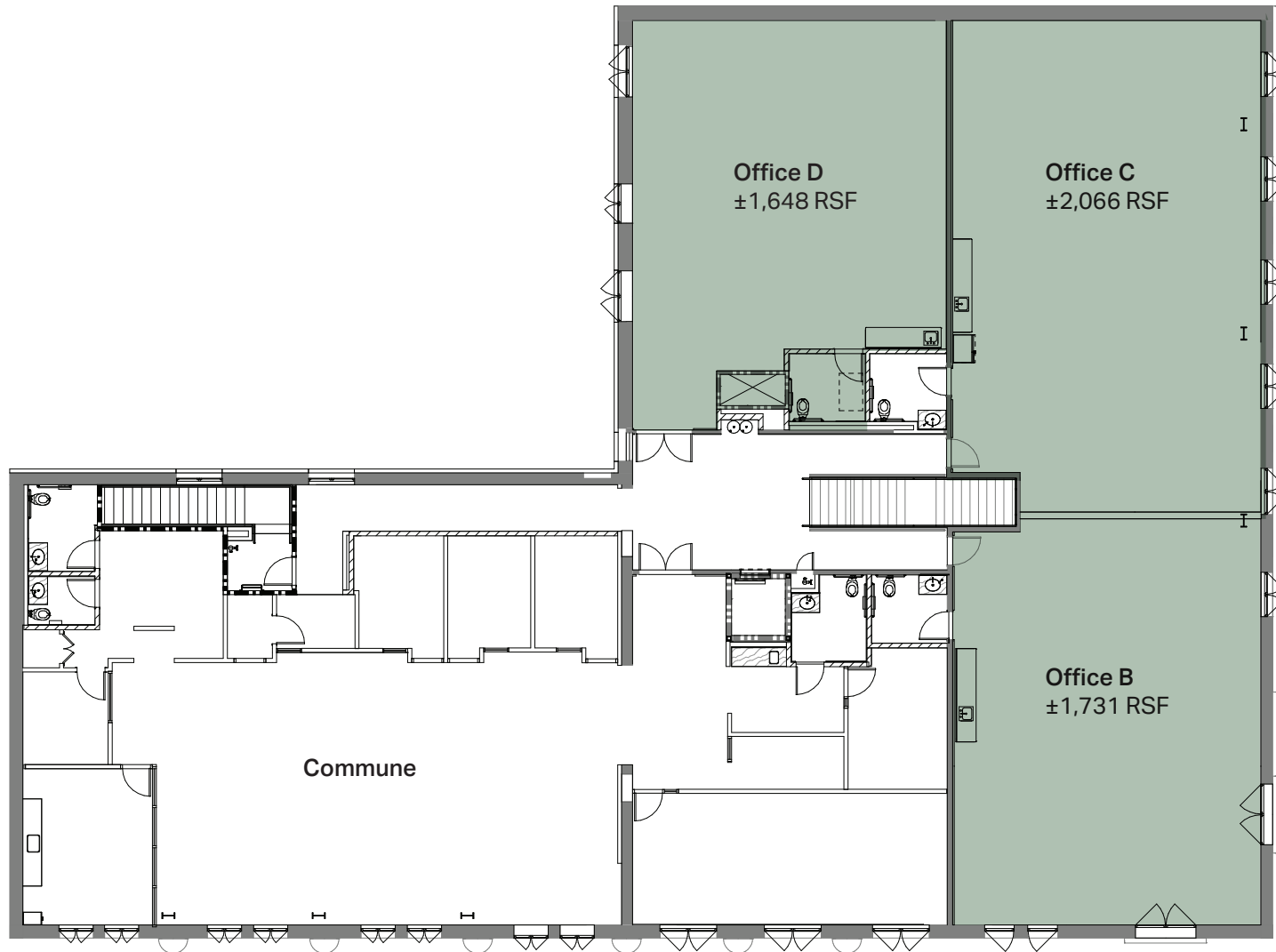
**Term & Occupancy**

3 to 5 Years  
Available Now

**Highlights**

- » The building has been completely renovated while maintaining its historic character and detailing.
- » Restored architectural features include the Churrigueresque detailing found on windows and the main entrance way.
- » Centrally located within one of LA’s most diverse neighborhoods.
- » The Westlake / MacArthur Park Station (B & D lines) is only a 5 minute walk.
- » Commune-designed interior and exterior details in the building.
- » Custom wood windows & doors.
- » Polished concrete and wood flooring.
- » 9-15 foot ceiling heights.
- » On-street parking and at surrounding public lots.





Office B + C + D can be combined for up to ±5,445 RSF.

**Retail C**

±749 RSF

Office

Retail

Showroom





**Retail D**

±743 RSF

Office

Retail

Showroom



**Office D / 2nd Floor**

±1,648 RSF

Office  
Showroom





**Office B + C / 2nd Floor**  
±3,797 Combined RSF

Office  
Showroom



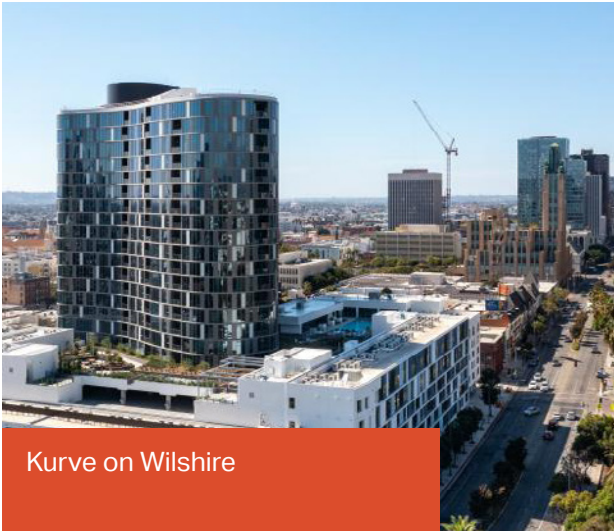


The ground floor retail at 2500 W 7th St now features the eclectic and bright coffee brand from Mid-City, **Jurassic Magic**.

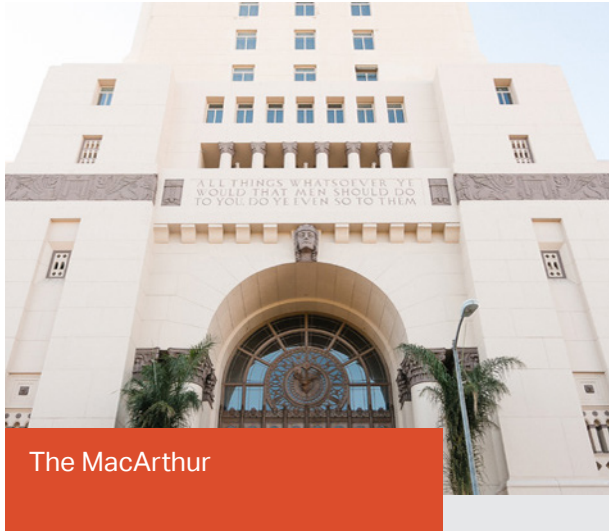
Discover their beautiful new café— *Dive into our artful brews, masterfully curated by passionate baristas. From velvety lattes to robust Americanos, each sip promises an exquisite journey. Beyond coffee, we're a beacon of community, where every moment sparks connection and inspiration. Experience the magic with us.*



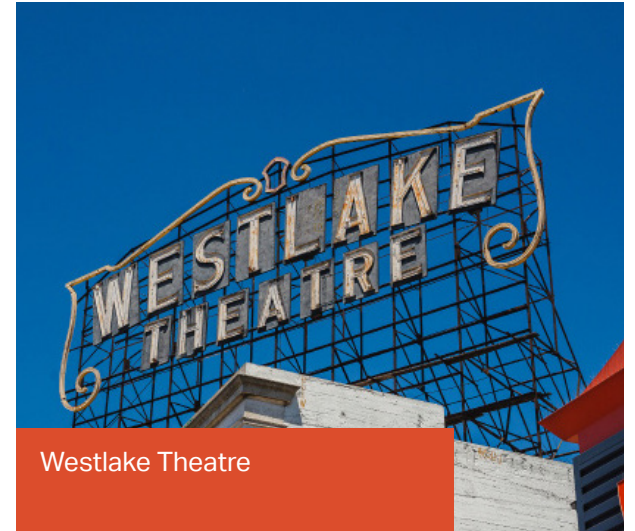
Westlake-MacArthur Park is one of LA's most historic neighborhoods—going back to the late 1800s. Built around the reservoir, the neighborhood features remarkable historic architecture alongside classic eateries, street vendors, and new residential development.



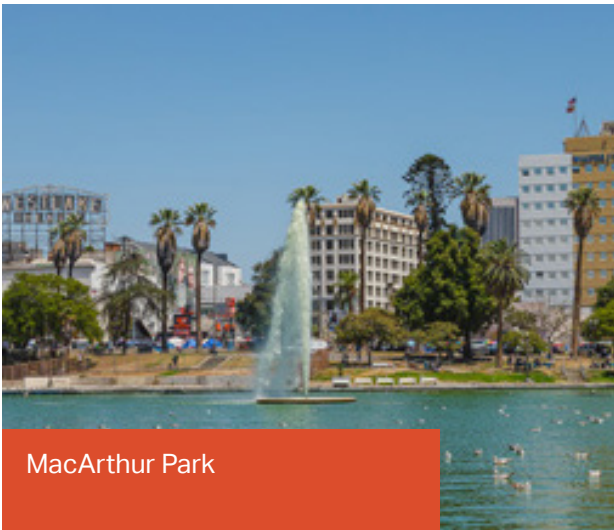
Kurve on Wilshire



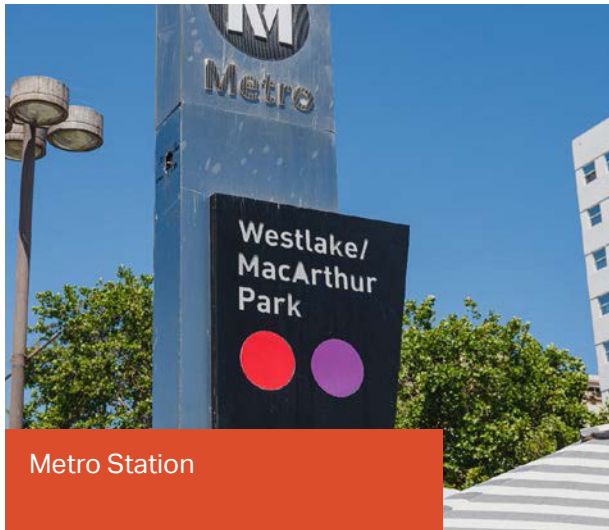
The MacArthur



Westlake Theatre



MacArthur Park



Metro Station



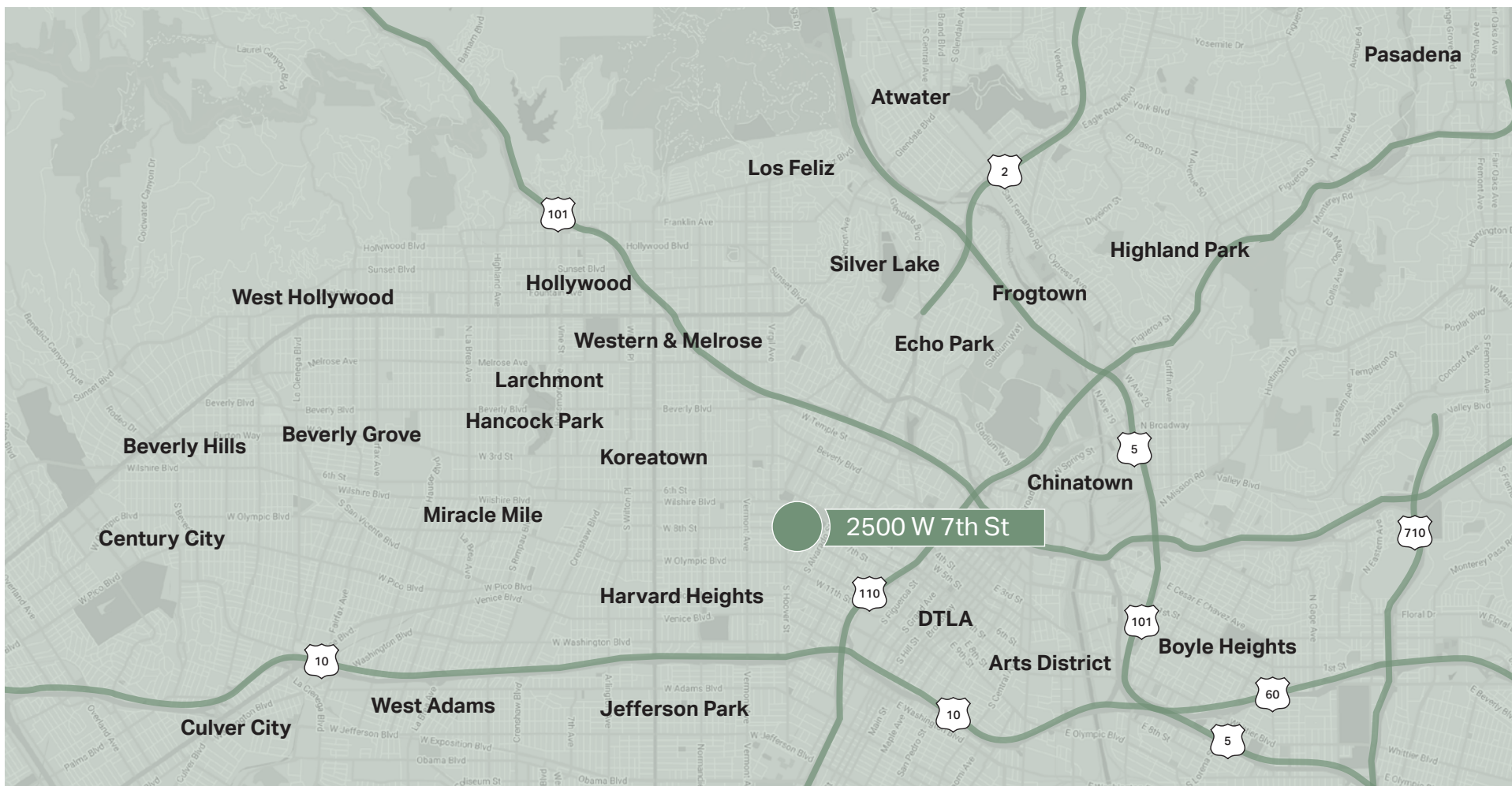
Langer's



1	Langer's Deli	Food & Beverage
2	Alchemist Coffee Project	Food & Beverage
3	Calic Bagel	Food & Beverage
4	Hayworth Theatre	Historic
5	Historic American Cement Building	Historic
6	Historic Granada Buildings	Historic
7	The MacArthur	Event Venue
8	MacArthur Park	Public Park
9	Metro Station	Transit
10	New Low Gallery	Gallery

93  
Walk Score





For More Information Contact

**Geoffrey Anenberg**  
 geoffrey@normal-properties.com  
 323-243-2821  
 DRE #01831214

Last Updated October 28, 2024.

The information contained in this communication is strictly confidential. This information has been obtained from sources believed to be reliable but has not been verified.

NO WARRANTY OR REPRESENTATION, EXPRESS OR IMPLIED, IS MADE AS TO THE CONDITION OF THE PROPERTY (OR PROPERTIES)

REFERENCED HEREIN OR AS TO THE ACCURACY OR COMPLETENESS OF THE INFORMATION CONTAINED HEREIN, AND SAME IS SUBMITTED SUBJECT TO ERRORS, OMISSIONS, CHANGE OF PRICE, RENTAL OR OTHER CONDITIONS, WITHDRAWAL WITHOUT NOTICE, AND TO ANY SPECIAL LISTING CONDITIONS IMPOSED BY THE PROPERTY OWNER(S). ANY PROJECTIONS, OPINIONS OR ESTIMATES ARE SUBJECT TO UNCERTAINTY AND DO NOT SIGNIFY CURRENT OR FUTURE PROPERTY PERFORMANCE.