

For Lease  
1,200-1,518 SF  
Office Space



## Boynton Beach Professional Center

1325 South Congress Avenue, Boynton Beach, FL 33426

### Property Features

- Move-in ready space
- Serene setting with courtyard and lush, tropical landscaping
- Improvement allowance available
- Just 1.5 miles west of I-95 and 3 miles from Bethesda Hospital East
- Central to numerous shopping, dining, and banking options – just 1.5 miles from the Boynton Beach Mall, Boynton Town Center, and more

### Key Features:



Minutes from I-95,  
the Florida Turnpike &  
numerous retail amenities



Outstanding parking



Direct suite access -  
no shared lobbies



Institutionally national  
recognized ownership

For more information

**Lesley Sheinberg**, Managing Director  
561 254 7810 | lsheinberg@mhcreal.com

**Jason L. Sundook**, SIOR  
Principal | jsundook@mhcreal.com



**FOR LEASE: BOYNTON BEACH PROFESSIONAL CENTER**

**Fantastic Location. Great Rates. Ample Parking.**



**FANTASTIC OFFICE SPACE NEAR THE BEST OF BOYNTON BEACH**

---

**Property:**

1325 South Congress Avenue, Boynton Beach, FL 33426

---

**Rental Rate:**

\$28.00/SF Gross

---

**Parking:**

Ample, free surface parking (5:1,000)

---

**For More Information:**

Lesley Sheinberg | [lsheinberg@mhcreal.com](mailto:lsheinberg@mhcreal.com)

Jason L. Sundook, SIOR | [jsundook@mhcreal.com](mailto:jsundook@mhcreal.com)



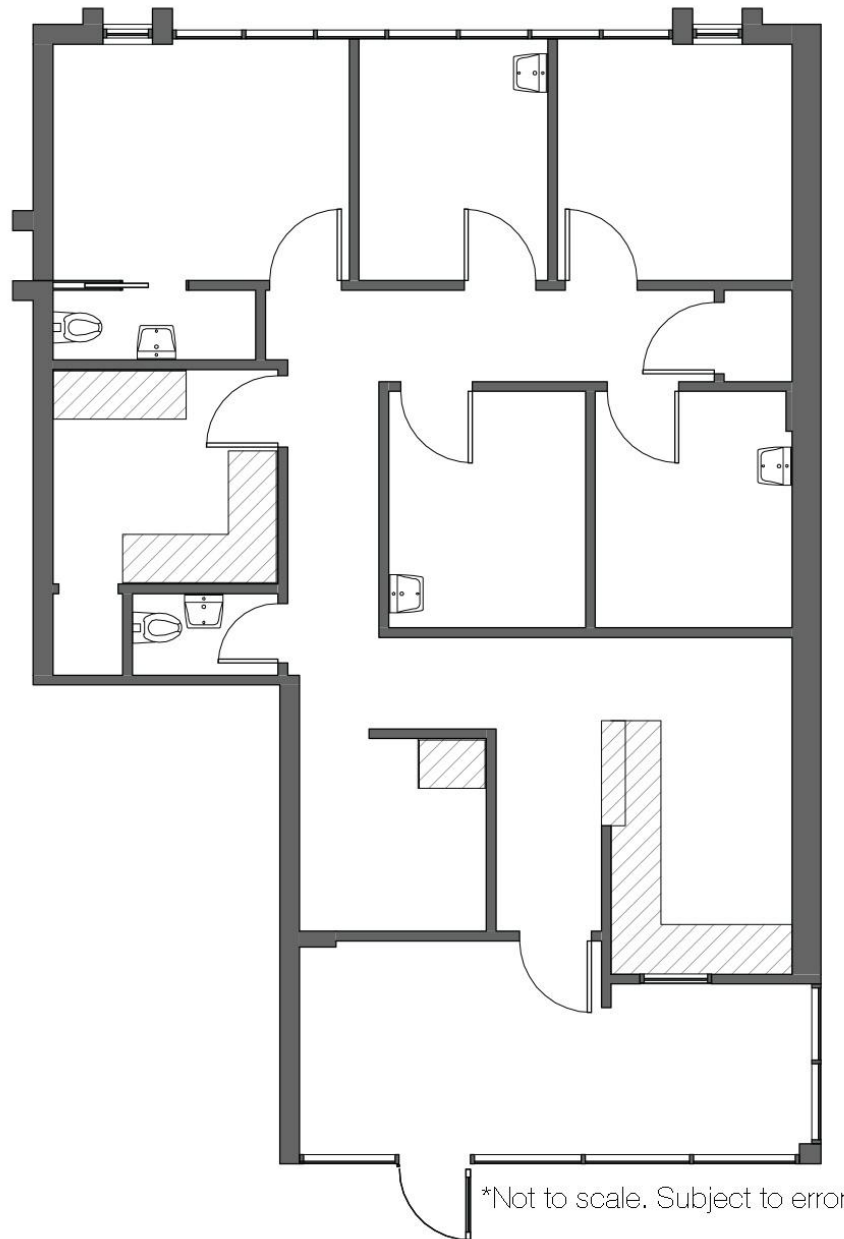
561 471 8000



[www.mhcreal.com](http://www.mhcreal.com)

# FOR LEASE: BOYNTON BEACH PROFESSIONAL CENTER

## Ground-Floor Office/Medical Space



### Suite 109 ±1,417 SF

- Includes multiple private offices (4 with sinks), a reception/lobby area, and open workspace
- Two private restrooms
- Efficient design, offering a balance of privacy and collaborative space

#### For More Information:

Lesley Sheinberg | [lsheinberg@mhcreal.com](mailto:lsheinberg@mhcreal.com)  
Jason L. Sundook, SIOR | [jsundook@mhcreal.com](mailto:jsundook@mhcreal.com)

 561 471 8000

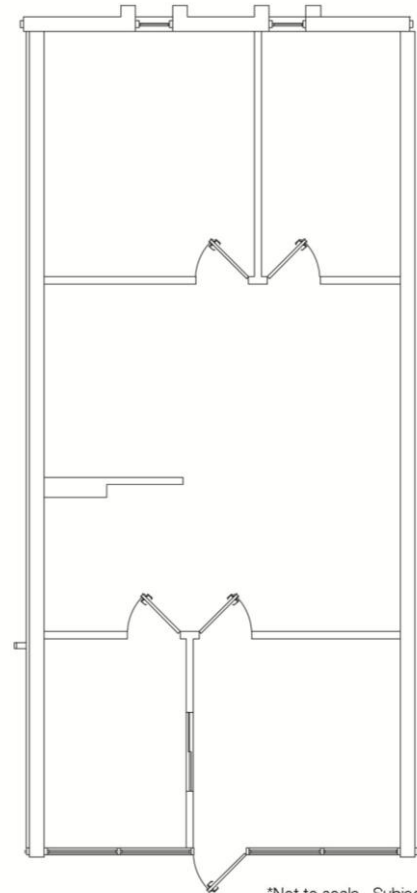
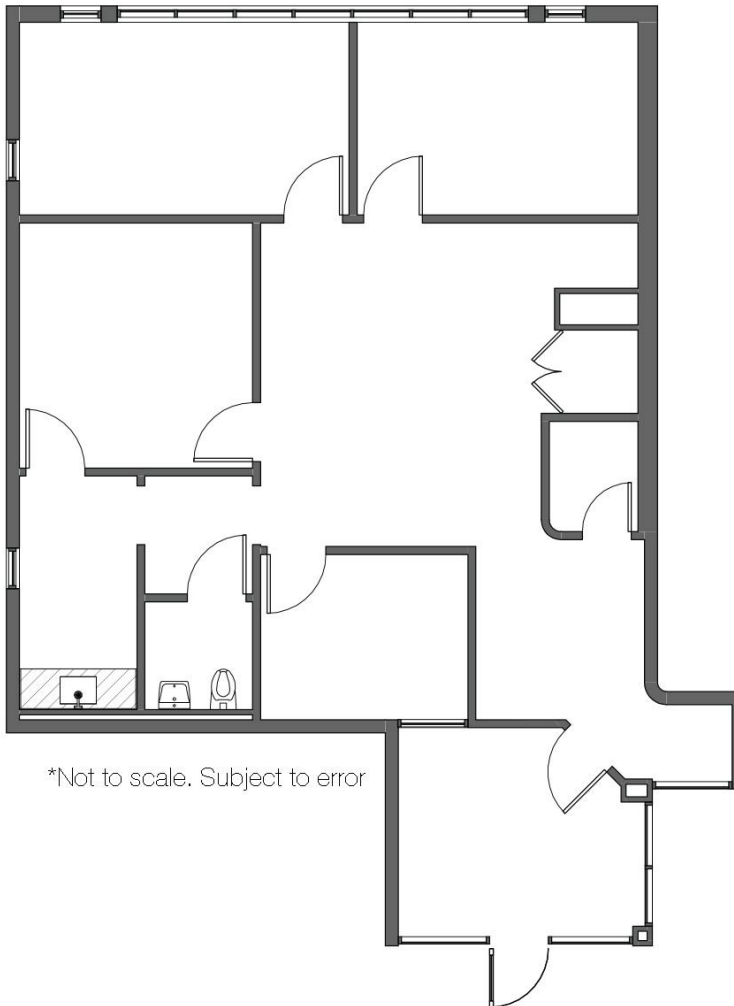
 [www.mhcreal.com](http://www.mhcreal.com)

# FOR LEASE: BOYNTON BEACH PROFESSIONAL CENTER

## Flexible Layouts | Direct Entry | Efficient Space

### Suite 203 ±1,518 SF

- Includes five private offices, a storage room, and flexible work areas



### Suite 206 ±1,200 SF


- Features four private offices and a central open area
- Overlooks landscaped courtyard

**LET'S SCHEDULE YOUR TOUR TODAY!**

 **561 471 8000**

#### For More Information:

Lesley Sheinberg | [lsheinberg@mhcreal.com](mailto:lsheinberg@mhcreal.com)  
Jason L. Sundook, SIOR | [jsundook@mhcreal.com](mailto:jsundook@mhcreal.com)

 561 471 8000



[www.mhcreal.com](http://www.mhcreal.com)