

FOR LEASE

3350 WILKENS AVE. | BALTIMORE MD 21229

ASKING PRICE:

\$20.00 PSF

MODIFIED GROSS

PROPERTY SUMMARY

AVAILABLE:

Suite 201: 4,307 SF

Suite 202: 1,226 SF

Suite 301: 637 SF

Suite 302: 850 SF

Suite 307: 2,242 SF

BUILDING CLASS: B

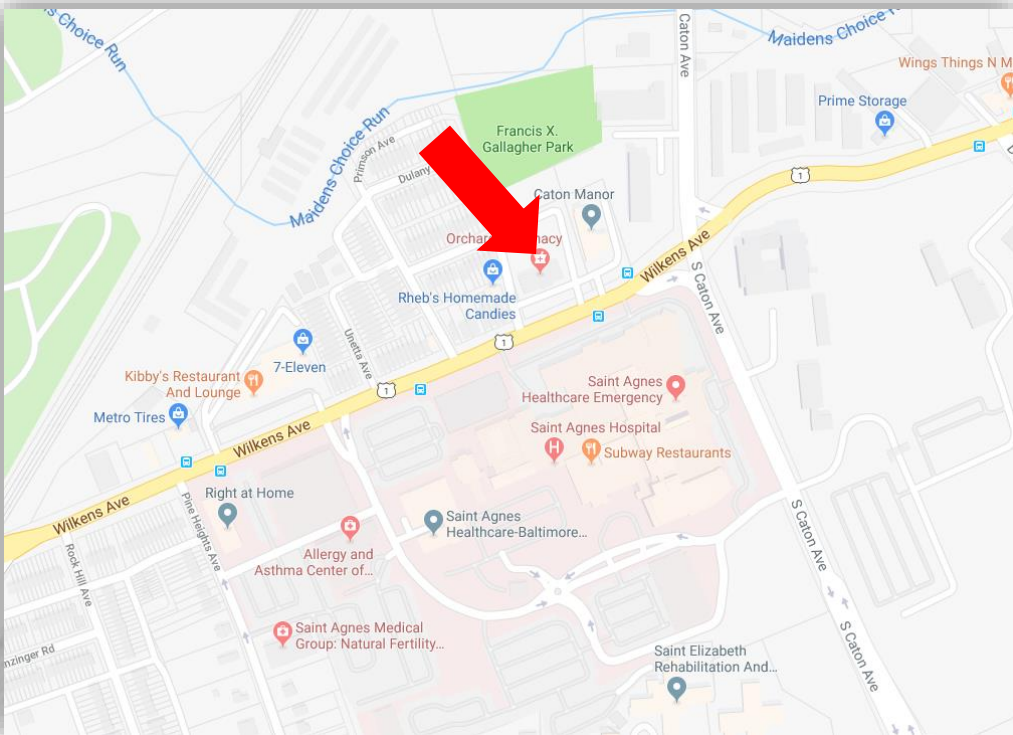
PARKING RATIO: 6 : 1,000 SF

YEAR BUILT: 1961

SPACE USE: Medical/Office

ZONING: OR-2, Office Residential

SUBMARKET: Saint Agnes



DOUGLAS R. KINGTON
Broker/Co-Owner
(410) 630-1240 x1
doug@crelogic.net

RE/MAX
COMMERCIAL®

WENDY L. BLAIR
Managing Director
(410) 630-1240 x2
wendy@crelogic.net

Disclaimer: While REMAX Commercial Logic has relied upon sources that it reasonably believes are reliable, Kington Commercial, LLC makes no representations or warranty, express or implied, as to the accuracy of the information contained herein. This document is submitted subject to errors, omissions, change of price and other conditions, and withdrawal without notice as imposed by our principals. Each Office Independently Owned and Operated.

PROPERTY INFO.

| | |
|----------------------|--|
| PROPERTY ADDRESS: | 3350 Wilkens Avenue, Baltimore, Maryland 21229 |
| TAX ID: | 20-05-2118-001A |
| OWNER: | 3350 Wilkens Mesk, LLC |
| COMMUNITY: | Saint Agnes |
| TOTAL BUILDING AREA: | 22,587 SF |
| LAND PARCEL: | 1.54 Acres |
| BUILT : | 1961 |
| HEIGHT: | Three Stories |
| CONSTRUCTION: | Brick and Masonry Block |
| ZONING: | OR-2, Office Residential |
| CURRENT USE: | Medical / Office |
| PARKING: | 136 free surface spaces; Ratio: 6 : 1,000 SF |

DEMOGRAPHICS (1 Mile Radius)

POPULATION:

2018 Total Population: 15,498
2023 Population: 15,203
Population Growth 2018-2023: 1.90%
Average Age: 38.80

HOUSEHOLDS:

2018 Total Households: 6,028
Median Household Income: \$42,925
Average Household Size: 2.50

TRAFFIC COUNT:

Wilkens Avenue – 19,112 (2017 ADT)

AMENITIES

- Across Wilkens Avenue from Ascension Saint Agnes Hospital
- 10 minute drive to West Baltimore Commuter Rail (Penn Line).
- Service Retail within 2 blocks
- ½ mile north of Royal Farms convenience store with 14 gas pumps, 5 Tesla charging stations and car wash
- Convenient access to I-95 and I-695
- 1.2 block from Caton Avenue, a major north-south route to Baltimore City
- Wilkens Avenue is US Route 1, a major truck route connecting Maine to Florida
- 9 minute, 3.4 mile drive away from UMBC campus
- Served by CityLink Purple and Yellow routes as well as LocalLink 76.

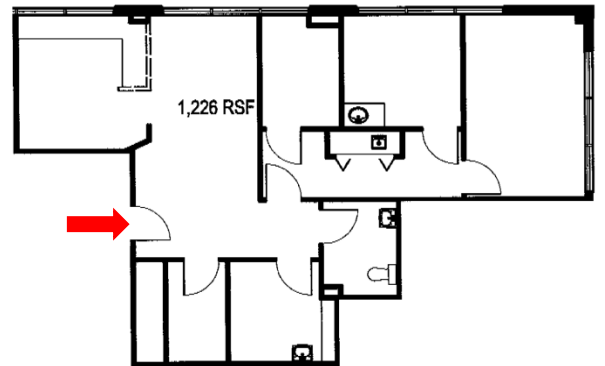
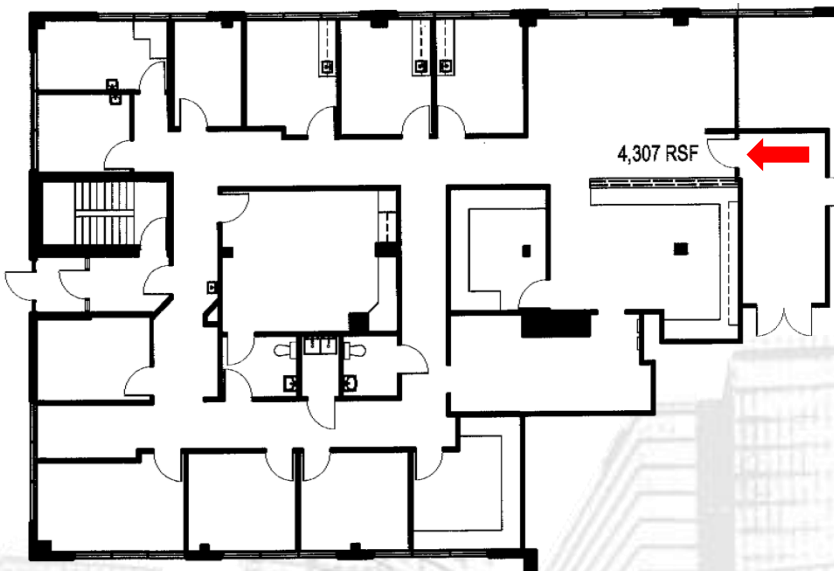
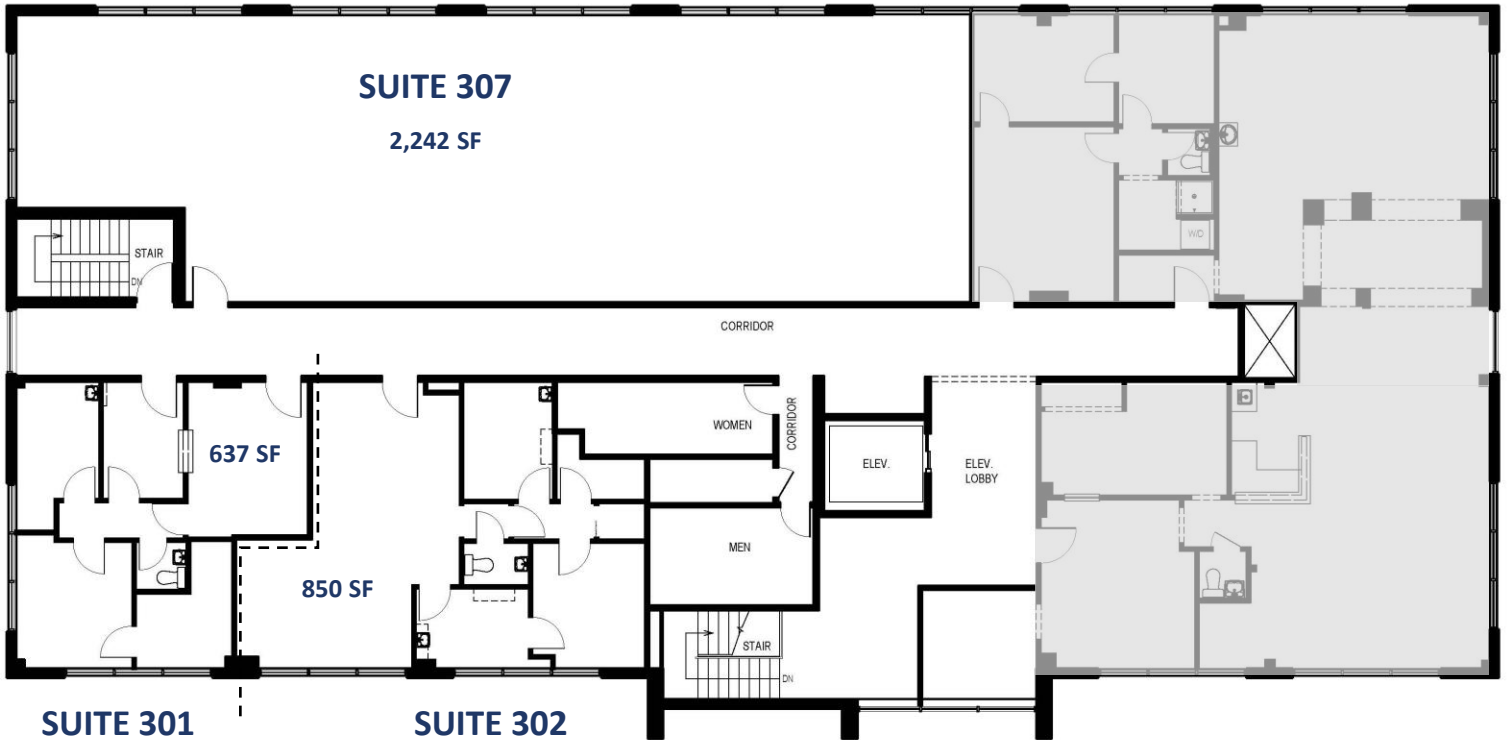
DOUGLAS R. KINGTON
Broker/Co-Owner
(410) 630-1240 x1
doug@crelogic.net

RE/MAX
COMMERCIAL®

WENDY L. BLAIR
Managing Director
(410) 630-1240 x2
wendy@crelogic.net

Disclaimer: While REMAX Commercial Logic has relied upon sources that it reasonably believes are reliable, RE/MAX Commercial Logic makes no representations or warranty, express or implied, as to the accuracy of the information contained herein. This document is submitted subject to errors, omissions, change of price and other conditions, and withdrawal without notice as imposed by our principals. Each office independently owned and operated.

FLOOR PLANS



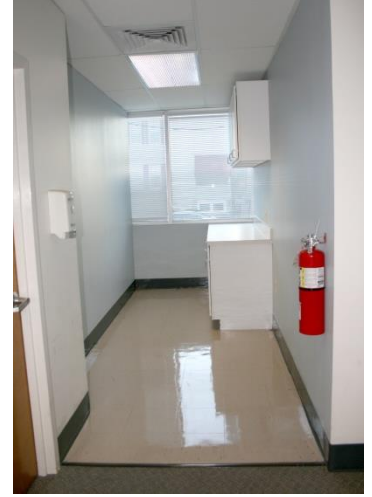
DOUGLAS R. KINGTON
Broker/Co-Owner
(410) 630-1240 x1
doug@crelogic.net



WENDY L. BLAIR
Managing Director
(410) 630-1240 x2
wendy@crelogic.net

Disclaimer: While REMAX Commercial Logic has relied upon sources that it reasonably believes are reliable, RE/MAX Commercial Logic makes no representations or warranty, express or implied, as to the accuracy of the information contained herein. This document is submitted subject to errors, omissions, change of price and other conditions, and withdrawal without notice as imposed by our principals. Each office independently owned and operated.

PHOTOGRAPHS



DOUGLAS R. KINGTON
Broker/Co-Owner
(410) 630-1240 x1
doug@crelogic.net

RE/MAX
COMMERCIAL®

WENDY L. BLAIR
Managing Director
(410) 630-1240 x2
wendy@crelogic.net

Disclaimer: While REMAX Commercial Logic has relied upon sources that it reasonably believes are reliable, RE/MAX Commercial Logic makes no representations or warranty, express or implied, as to the accuracy of the information contained herein. This document is submitted subject to errors, omissions, change of price and other conditions, and withdrawal without notice as imposed by our principals. Each office independently owned and operated.