



893 N Jan-Mar Court

Olathe, Kansas

- 8,000 SF Building Available
(3,000 SF Office / 5,000 SF Warehouse)
- 0.59 Acres Lot
- Clear Height: 15'-17'
- Loading: One (1) 8'x10' Dock-High Door &
One (1) 12'x14' Drive-in Door
- Power: Two (2) 200 Amp, 240V, 3-Phase Services
- Metal Construction
- Zoning: M-2
- HVAC: Fully Conditioned Office & Warehouse
- Clear Span
- Lease Rate: \$10.50 PSF NNN

For more information:

Evan Calkins
+1 913 890 2017 • evan@nai-heartland.com

Seth Sinovic
+1 913 890 2012 • seth@nai-heartland.com

Brent Peterson, SIOR
+1 913 890 2016 • brent@nai-heartland.com

Available For Lease 8,000 SF Warehouse / Office



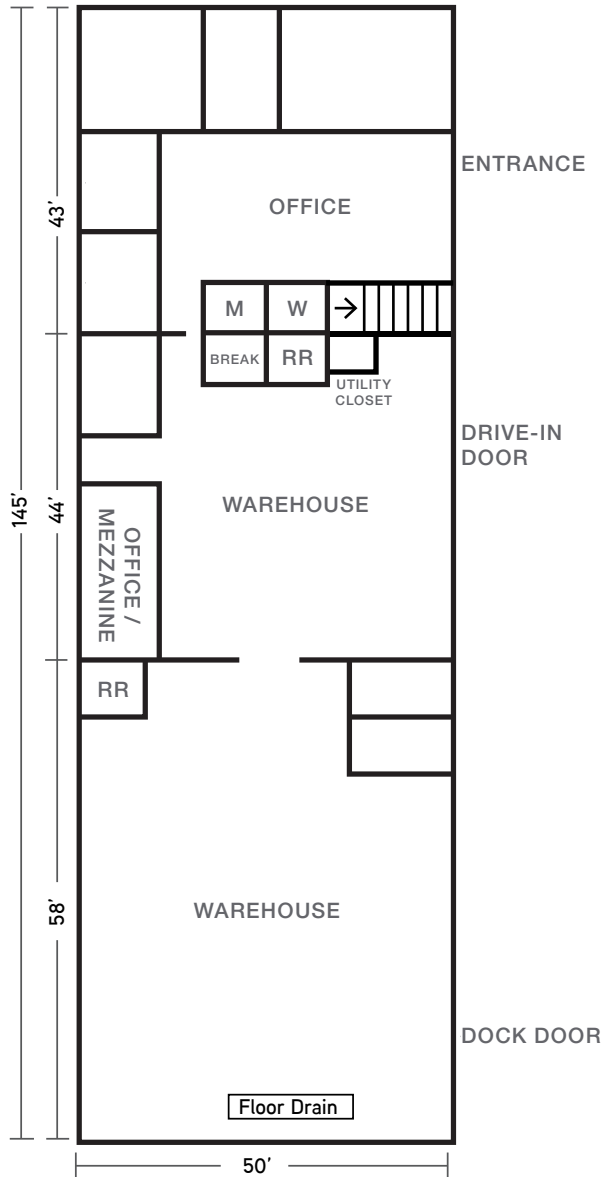
NO WARRANTY OR REPRESENTATION, EXPRESS OR IMPLIED, IS MADE AS TO THE ACCURACY OF THE INFORMATION CONTAINED HEREIN, AND THE SAME IS SUBMITTED SUBJECT TO ERRORS, OMISSIONS, CHANGE OF PRICE, RENTAL OR OTHER CONDITIONS, PRIOR SALE, LEASE OR FINANCING, OR WITHDRAWAL WITHOUT NOTICE, AND OF ANY SPECIAL LISTING CONDITIONS IMPOSED BY OUR PRINCIPALS NO WARRANTIES OR REPRESENTATIONS ARE MADE AS TO THE CONDITION OF THE PROPERTY OR ANY HAZARDS CONTAINED THEREIN ARE ANY TO BE IMPLIED.

4400 College Boulevard Suite 170
Overland Park, Kansas 66211
+1 913 362 1000

nai-heartland.com

Available For Lease

8,000 SF Warehouse / Office



NO WARRANTY OR REPRESENTATION, EXPRESS OR IMPLIED, IS MADE AS TO THE ACCURACY OF THE INFORMATION CONTAINED HEREIN, AND THE SAME IS SUBMITTED SUBJECT TO ERRORS, OMISSIONS, CHANGE OF PRICE, RENTAL OR OTHER CONDITIONS, PRIOR SALE, LEASE OR FINANCING, OR WITHDRAWAL WITHOUT NOTICE, AND OF ANY SPECIAL LISTING CONDITIONS IMPOSED BY OUR PRINCIPALS NO WARRANTIES OR REPRESENTATIONS ARE MADE AS TO THE CONDITION OF THE PROPERTY OR ANY HAZARDS CONTAINED THEREIN ARE ANY TO BE IMPLIED.

4400 College Boulevard Suite 170
 Overland Park, Kansas 66211
 +1 913 362 1000

nai-heartland.com