

• Negotiable rent & term

• Fixed increases, no pass-through surprises

• Renovated garage and common areas

• Prime location

• On-site banking



• Covered parking - \$85.00 per space per month

• Available on-site storage

• On-site management

• Access control by Datawatch

For more details or to arrange a tour, please call:

301.961.9696

Jack Alexander
Ext. 207

jalexander@amrcommercial.com

SPEC SUITES AVAILABLE

720 – 2,904 R.S.F.



5272 River Road Bethesda, Maryland 20816

WALK TO

**Dining ♦ Grocery ♦ Cleaners
and MORE!**



GEORGETOWN BAGELRY
Artisan Bakers Since 1981



Although all information is furnished regarding for sale, rental or financing is from sources we deem reliable, such information has not been verified and no express representation is made nor is any to be implied as to the accuracy thereof, and it is submitted subject to errors, omissions, changes of price, rental or other conditions, prior sale, lease or financing or withdrawal without notice.

"C:\Users\RobynFunkhouser\AMR Commercial\AMR Commercial Team Site - Shared Documents\Property Profiles & Flyers\Property Flyers\Kenwood Flyers\5272 River LEASE All Available Space - jca 10252023.pptx"



ALEXANDER, MONTROSE, RITTENBERG
Commercial Real Estate Brokerage
Est. 1994

Celebrating
30
Years
1994-2024

A Member of CORE NETWORK

4849 Rugby Avenue ♦ Suite 200 ♦ Bethesda, Maryland 20814 ♦ 301.961.9696 ♦ Fax 301.656.7551

www.amrcommercial.com ♦ info@amrcommercial.com

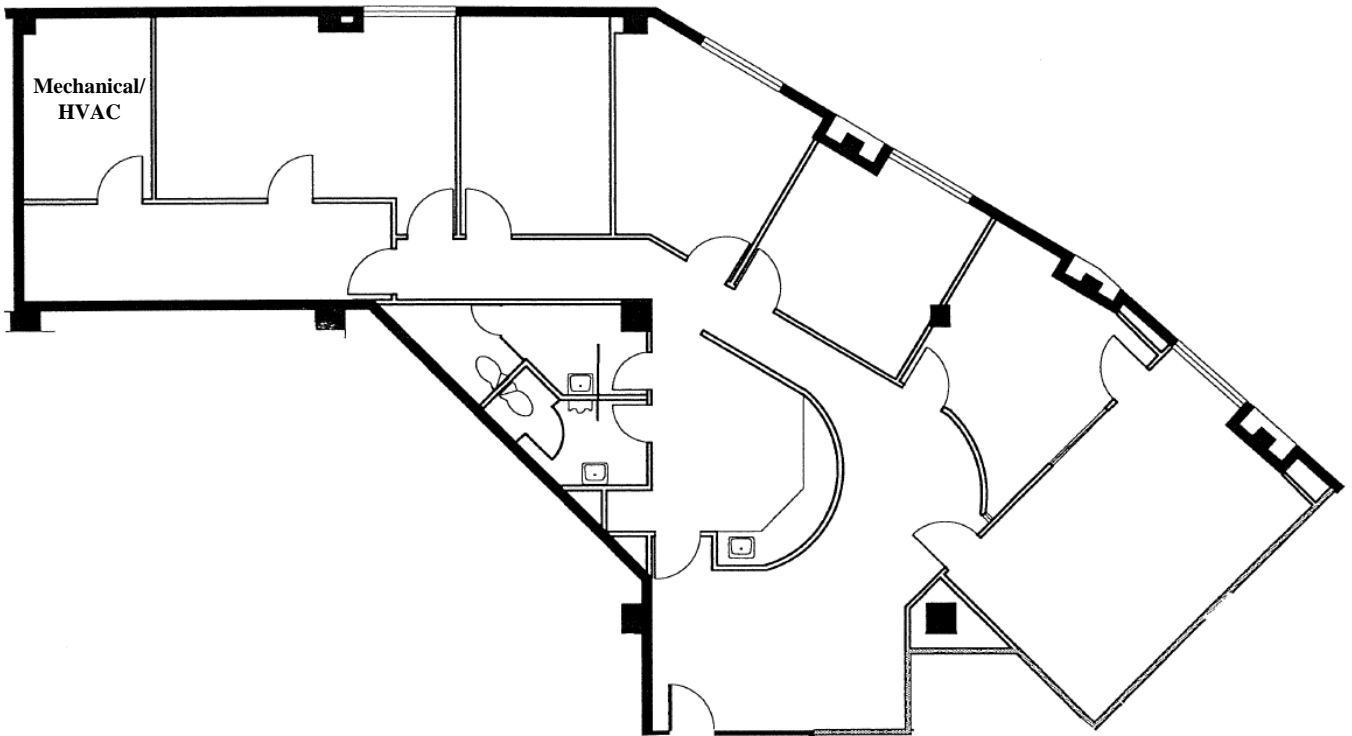
KENWOOD BUILDING

5272 River Road

Bethesda, Maryland 20816

Suite 100

2,149 R.S.F.



NOT TO SCALE | MEASUREMENTS APPROXIMATE

Although all information furnished is from sources we deem reliable, such information has not been verified and no express representation is made, nor is any to be implied, as to the accuracy thereof, and it is submitted subject to errors, omissions, changes of price/rental or other conditions prior to sale or lease, and subject to withdrawal without notice.

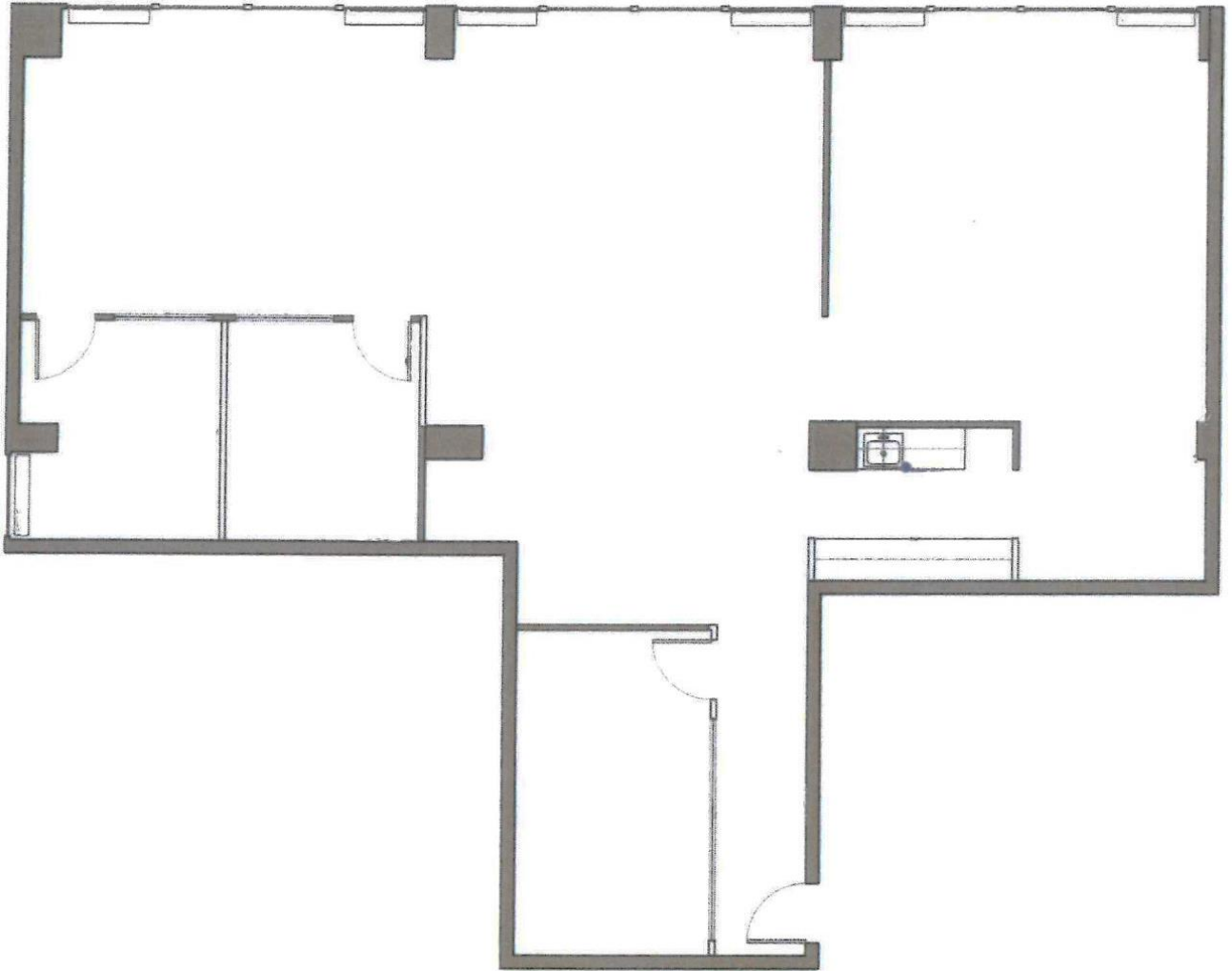
KENWOOD BUILDING

5272 River Road

Bethesda, Maryland 20816

Suite 500

2,188 R.S.F.



NOT TO SCALE | MEASUREMENTS APPROXIMATE

Although all information furnished is from sources we deem reliable, such information has not been verified and no express representation is made, nor is any to be implied, as to the accuracy thereof, and it is submitted subject to errors, omissions, changes of price/rental or other conditions prior to sale or lease, and subject to withdrawal without notice.

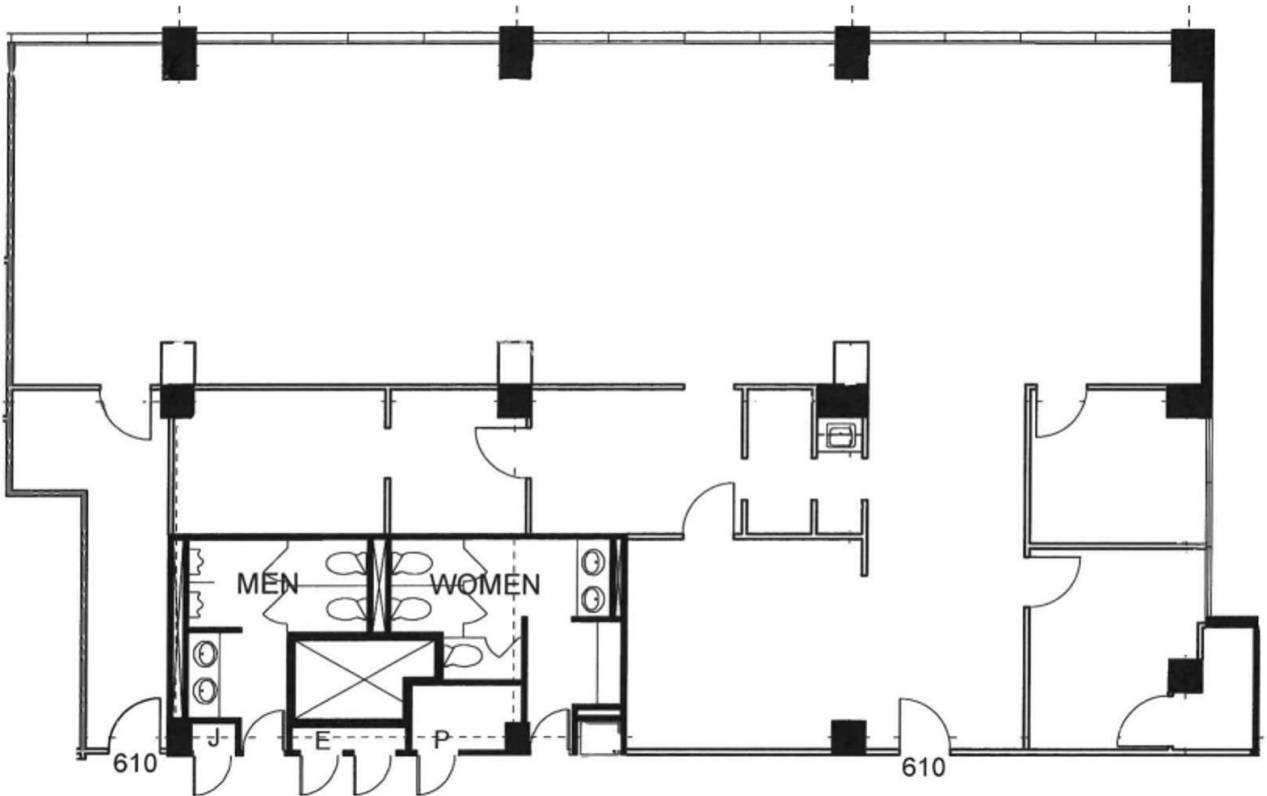
KENWOOD BUILDING

5272 River Road

Bethesda, Maryland 20816

Suite 610

2,904 R.S.F.



NOT TO SCALE | MEASUREMENTS APPROXIMATE

Although all information furnished is from sources we deem reliable, such information has not been verified and no express representation is made, nor is any to be implied, as to the accuracy thereof, and it is submitted subject to errors, omissions, changes of price/rental or other conditions prior to sale or lease, and subject to withdrawal without notice.

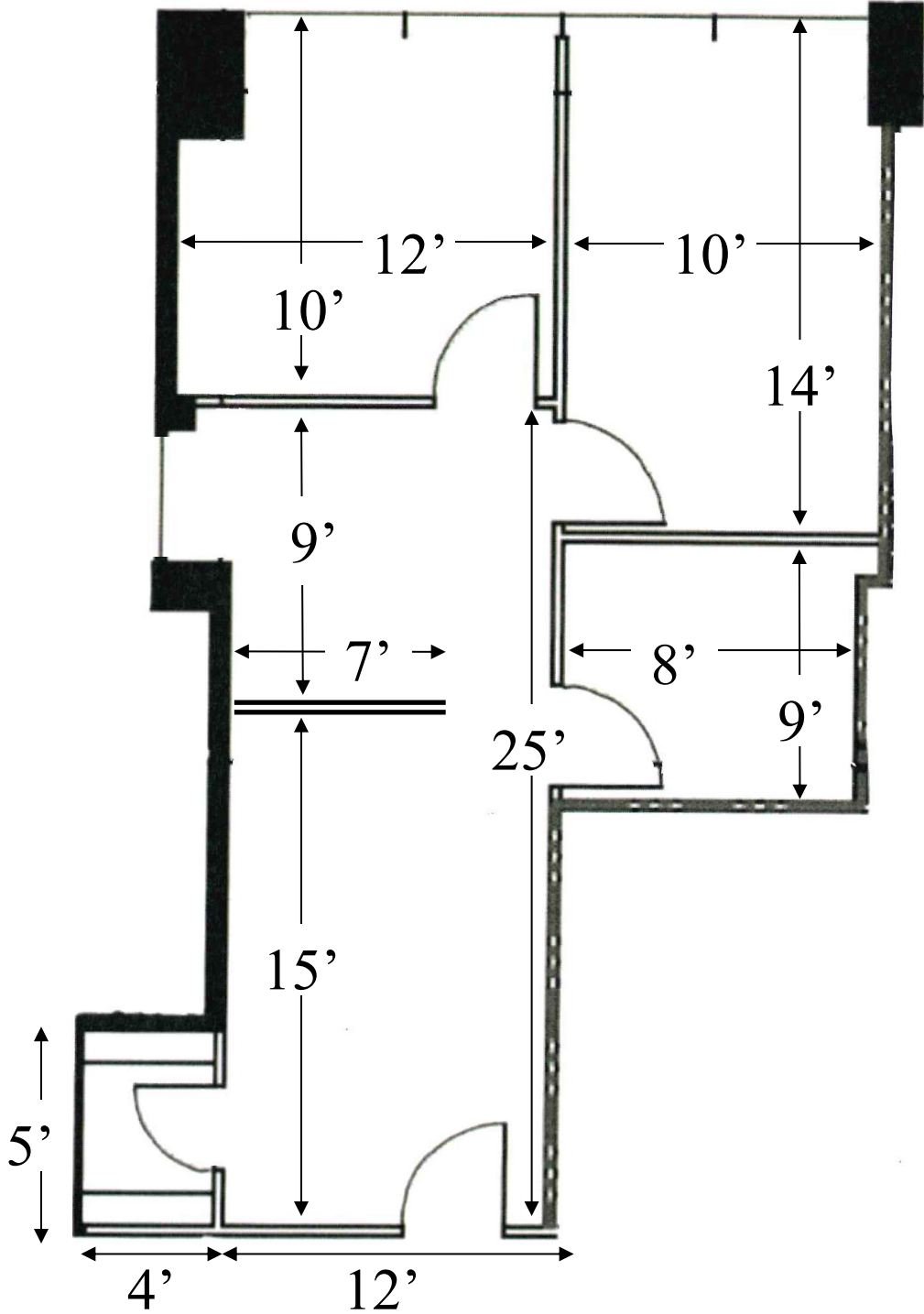
KENWOOD BUILDING

5272 River Road

Bethesda, Maryland 20816

Suite 650

720 R.S.F.



NOT TO SCALE | MEASUREMENTS APPROXIMATE

Although all information furnished is from sources we deem reliable, such information has not been verified and no express representation is made, nor is any to be implied, as to the accuracy thereof, and it is submitted subject to errors, omissions, changes of price/rental or other conditions prior to sale or lease, and subject to withdrawal without notice.