

3303 Murray Rd

Estherville, Iowa
www.cbre.com/desmoines

Industrial-Warehouse

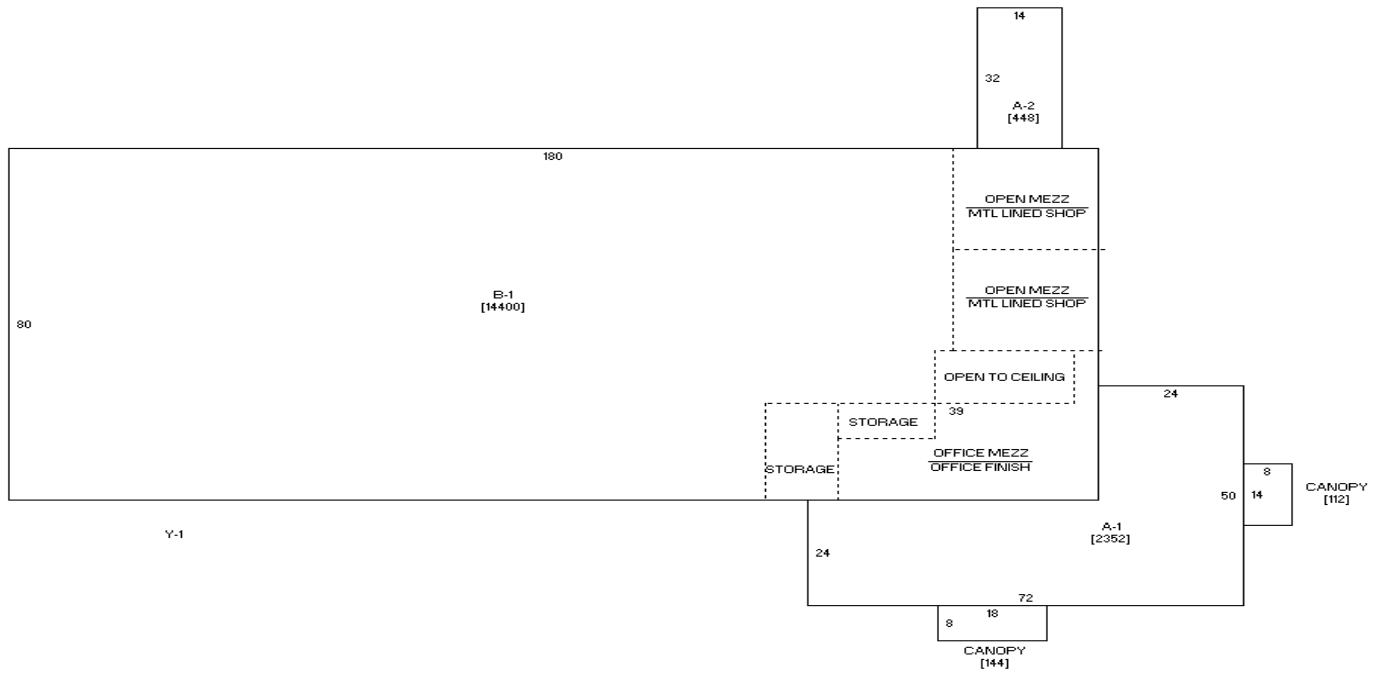
This versatile industrial property is located in the heart of Estherville's commercial corridor. Situated at 3303 Murray Road, it is an expansive site that is home to multiple active business entities making it an ideal investment for manufacturing, warehousing, or logistics operations.

Available Space

- + Sale Price: \$1,100,000
- + 17,200 SF Industrial Warehouse Building with Finished Office Space
 - 14,848 SF of Warehouse
 - 2,352 SF of Office
- + 3.90 Acres
- + Built in 2017
- + Opportunity for Outdoor Storage or to Expand Building Area



Floor Plan



3303 Murray Rd
Estherville, Iowa

For Sale

Location



Contact Us

Ajdin Nadarevic

Senior Vice President

+1 515 419 1882

ajdin.nadarevic@cbre.com

Licensed in the State of Iowa

Ben Probst

Senior Associate

+1 515 326 1985

ben.probst@cbre.com

Licensed in the State of Iowa

© 2025 CBRE, Inc. All rights reserved. This information has been obtained from sources believed reliable, but has not been verified for accuracy or completeness. You should conduct a careful, independent investigation of the property and verify all information. Any reliance on this information is solely at your own risk. CBRE and the CBRE logo are service marks of CBRE, Inc. All other marks displayed on this document are the property of their respective owners, and the use of such logos does not imply any affiliation with or endorsement of CBRE. Photos herein are the property of their respective owners. Use of these images without the express written consent of the owner is prohibited.