

OFFICE RETAIL SPACE FOR LEASE

3943 Lorna Rd. ♦ Hoover, AL ♦ 35244 ♦ Jefferson County



SUITE SIZE: 2,250 SQ FT

ASKING PRICE: \$2,250/month

Mark Dinan, MBA, CCIM

(o) 205-980-3434

(c) 205-243-3434

markdinan@bellsouth.net

MARK DINAN
Commercial & Investment Real Estate

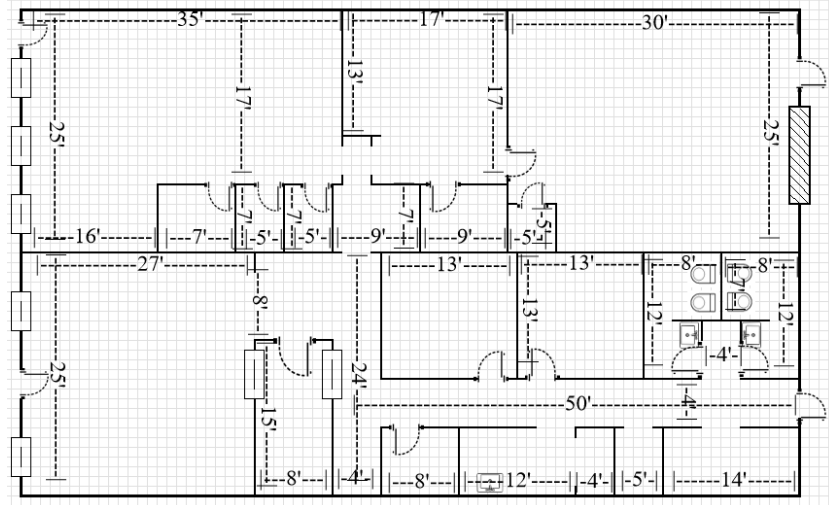


*All Information furnished regarding property sale, rental, or financing is from sources deemed reliable, but is not guaranteed.

LOCATION DETAILS

3943 Lorna Rd. ♦ Hoover, AL ♦ 35244 ♦ Jefferson County

- ♦ Flex Space ideal for multiple uses.
- ♦ Owner will Improve to Suit Tenant
- ♦ Flexible Terms
- ♦ Unit currently set up as Office
- ♦ Superior Location with Frontage and High Visibility
- ♦ Much Sought after Riverchase Area
- ♦ Abundant Parking
- ♦ Building Signage
- ♦ Near Major Retailers and Businesses
- ♦ Unincorporated Jefferson County
- ♦ Major Thoroughfare Gives Easy Access
- ♦ Easy Ingress and Egress
- ♦ Adjoining 3945 Lorna Rd suite also available.
- ♦ Available Now, Exterior Renovations Coming 2025



Mark Dinan, MBA, CCIM

(o) 205-980-3434

(c) 205-243-3434

markdinan@bellsouth.net

MARK DINAN
Commercial & Investment Real Estate



*All Information furnished regarding property sale, rental, or financing is from sources deemed reliable, but is not guaranteed.

AERIAL PHOTO

3943 Lorna Rd. ♦ Hoover, AL ♦ 35244 ♦ Jefferson County



Mark Dinan, MBA, CCIM

(c) 205-980-3434

(c) 205-243-3434

markdinan@bellsouth.net

MARK DINAN
Commercial & Investment Real Estate



*All Information furnished regarding property sale, rental, or financing is from sources deemed reliable, but is not guaranteed.

BIRD'S EYE VIEW PHOTO

3943 Lorna Rd. ♦ Hoover, AL ♦ 35244 ♦ Jefferson County



Mark Dinan, MBA, CCIM

(c) 205-980-3434

(c) 205-243-3434

markdinan@bellsouth.net

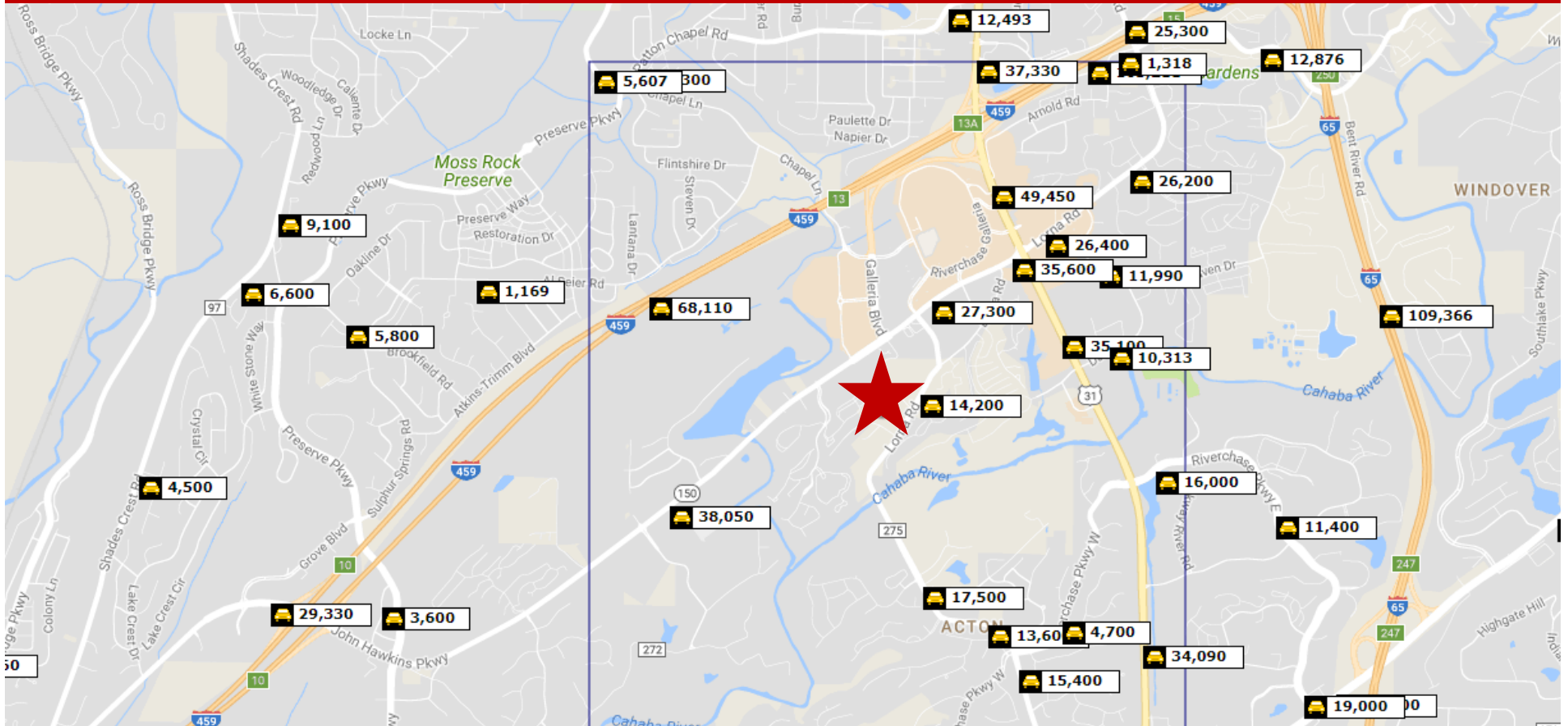
MARK DINAN
Commercial & Investment Real Estate



*All Information furnished regarding property sale, rental, or financing is from sources deemed reliable, but is not guaranteed.

TRAFFIC COUNTS

3943 Lorna Rd. ♦ Hoover, AL ♦ 35244 ♦ Jefferson County



Mark Dinan, MBA, CCIM

(c) 205-980-3434

(c) 205-243-3434

markdinan@bellsouth.net

MARK DINAN
Commercial & Investment Real Estate



*All Information furnished regarding property sale, rental, or financing is from sources deemed reliable, but is not guaranteed.

LOCATION MAP

3943 Lorna Rd. ♦ Hoover, AL ♦ 35244 ♦ Jefferson County



Directions:

- ♦ I-65 to Exit 250. West on I-459 to Exit 13A. South on Hwy 31 to Hwy 150. Go West on Hwy 150. Go South on Old Montgomery Hwy. Property on right, below Ashley Furniture.

Mark Dinan, MBA, CCIM

(c) 205-980-3434

(c) 205-243-3434

markdinan@bellsouth.net

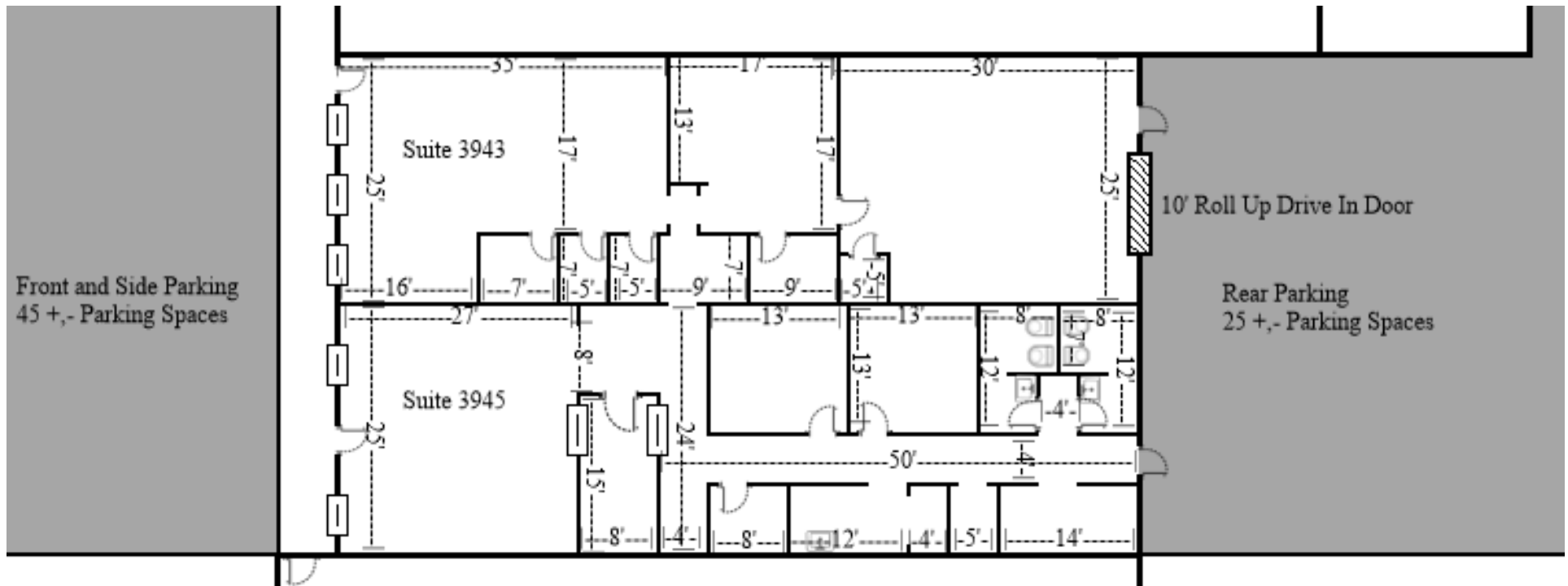
MARK DINAN
Commercial & Investment Real Estate



*All Information furnished regarding property sale, rental, or financing is from sources deemed reliable, but is not guaranteed.

FLOOR PLAN

3943 Lorna Rd. ♦ Hoover, AL ♦ 35244 ♦ Jefferson County



Mark Dinan, MBA, CCIM

(o) 205-980-3434

(c) 205-243-3434

markdinan@bellsouth.net

MARK DINAN
Commercial & Investment Real Estate



*All Information furnished regarding property sale, rental, or financing is from sources deemed reliable, but is not guaranteed.