



**FOR LEASE**

# Premium Office Space at Memorial Green

12505 - 12525 Memorial Dr / Houston, TX 77024

## PROPERTY HIGHLIGHTS

- » 1,297 – 4,149 Contiguous RSF
- » Move-in Ready
- » \$32.50 NNN
- » OPEX (2025 Projected): \$20.29
- » Parking: 3.5/1,000
  - Unreserved – \$45
  - Reserved – \$95
- » First-Class Restaurant and Retail Offerings

## AVAILABILITIES

Memorial Green 1

- » [Suite 270](#) – 1,297 RSF Brand New Spec Suite
- » [Suite 375](#) – 2,485 RSF Second Gen.

Memorial Green 2

- » [Suite 305](#) – 2,510 RSF Corner, Second Gen.
- » [Suite 310](#) – 1,686 RSF Shell Condition



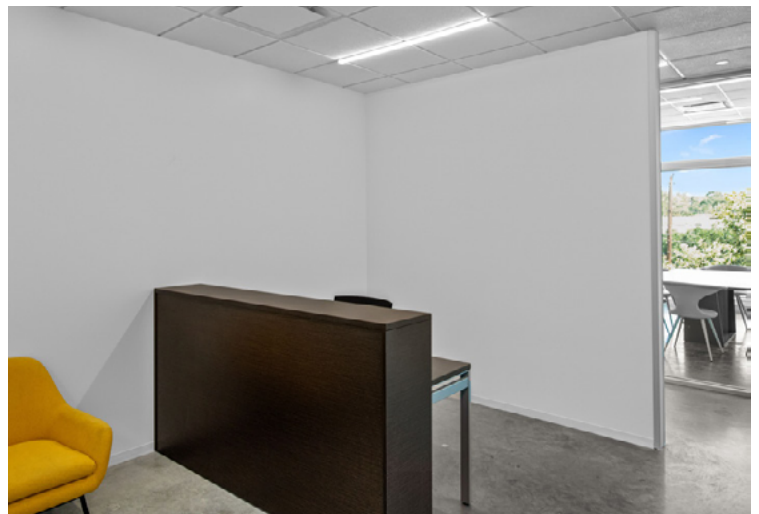
MEMORIAL GREEN  
BY **MIDWAY**



**FOR LEASE**

# Premium Office Space at Memorial Green

12505 - 12525 Memorial Dr / Houston, TX 77024



**partners**  
PARTNERSREALESTATE.COM

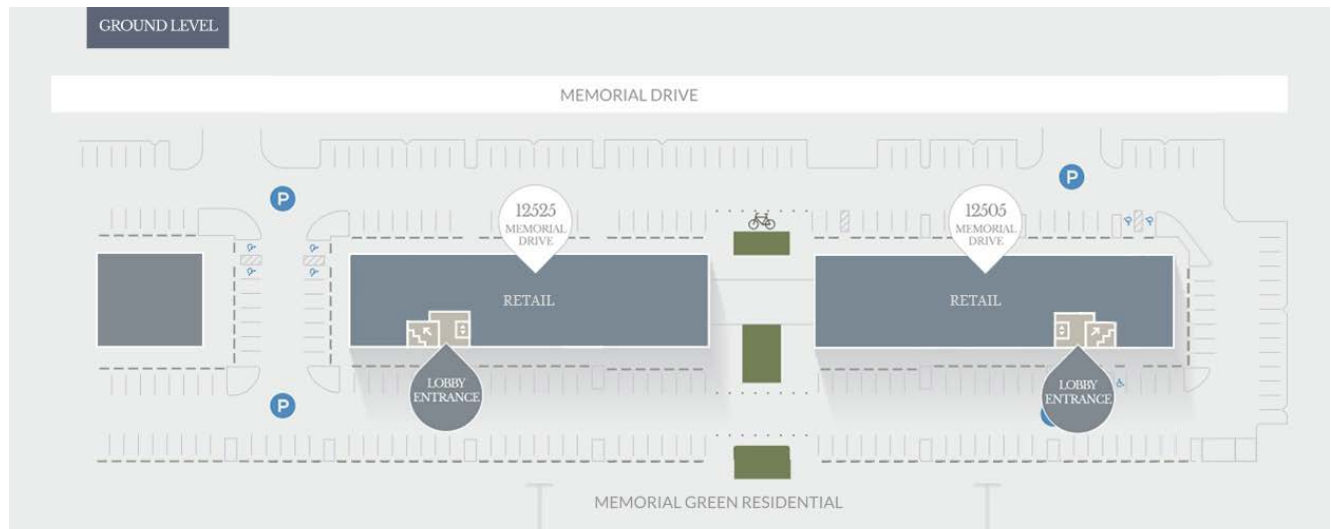
  
MEMORIAL GREEN  
BY MIDWAY

The information contained herein has been given to us by the owner of the property or other sources we deem reliable, we have no reason to doubt its accuracy, but we do not guarantee it. All information should be verified prior to purchase or lease. © 2025 Partners. All rights reserved.

**FOR LEASE**

# Premium Office Space at Memorial Green

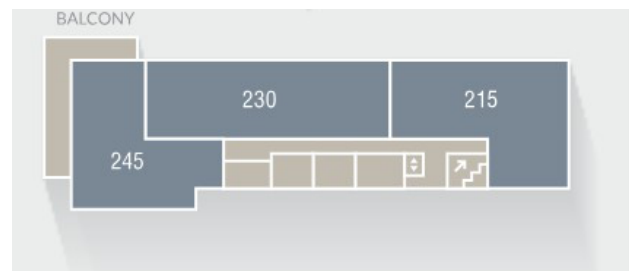
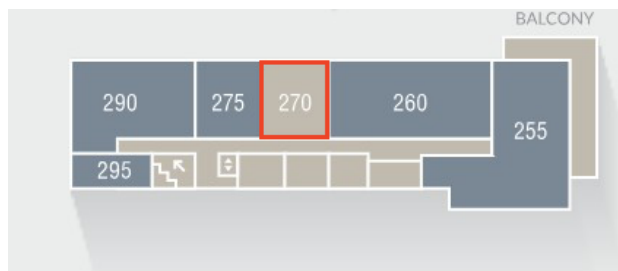
12505 - 12525 Memorial Dr / Houston, TX 77024



**Memorial Green 1 (West)**

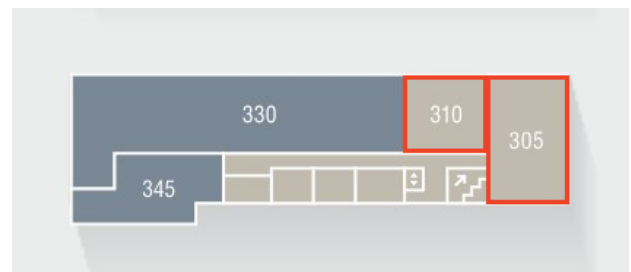
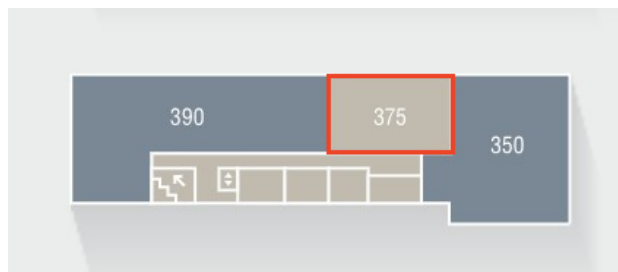
**Memorial Green 2 (East)**

Level 2



» [Suite 270](#) – 1,297 RSF

Level 3



» [Suite 375](#) – 2,485 RSF

» [Suite 305](#) – 2,510 RSF

» [Suite 310](#) – 1,686 RSF

**partners**

**PARTNERSREALESTATE.COM**



**MEMORIAL GREEN**  
BY **MIDWAY**

The information contained herein has been given to us by the owner of the property or other sources we deem reliable, we have no reason to doubt its accuracy, but we do not guarantee it. All information should be verified prior to purchase or lease. © 2025 Partners. All rights reserved.