

OFFICE/WAREHOUSE FOR SALE OR LEASE

****BUSINESS RELOCATING****

4989 MERCER UNIVERSITY
DRIVE, MACON, GEORGIA 31210
BIBB COUNTY

SALES PRICE:

\$1,250,000

LEASE RATE:

\$9/SF



BO ELLIOTT C: 478.718.2049

BELLIOTT@THESUMMITGROUPMACON.COM

4124 ARKWRIGHT ROAD, SUITE 1, MACON, GA 31210

O: 478.750.7507

WWW.THESUMMITGROUPMACON.COM



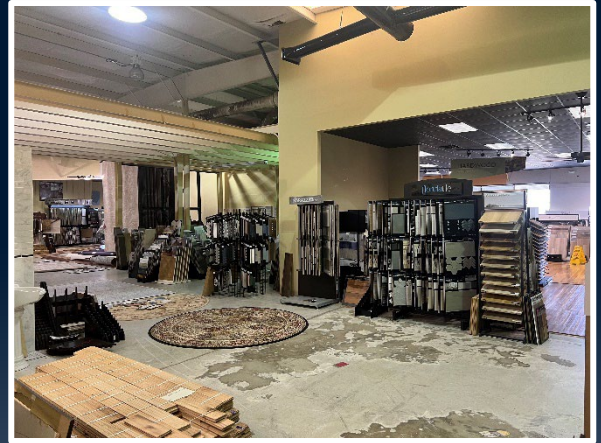
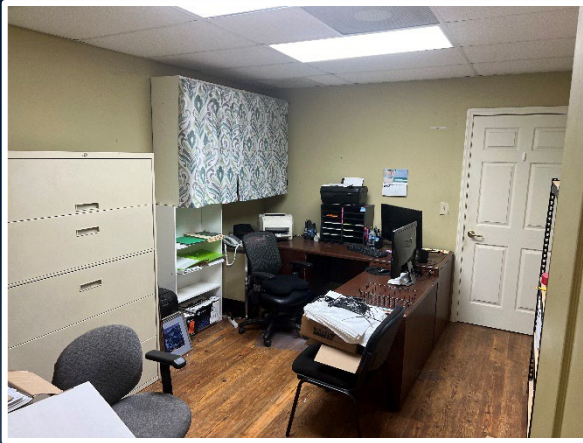
PROPERTY INFORMATION

- ± 13,750 SF office/warehouse situated on .94 acre in a high traffic location near the signalized intersection of Mercer University Drive & Log Cabin Drive
- Zoned: PDE (Planned Development Extraordinaire)
- 3 Offices, 2 bathrooms, 1 interior roll up door & 5 exterior roll up doors
- Less than one mile from Interstate 475, across from Capitol Cycle & Harley Davidson
- 16 Eave wall height
- 18 Center Height



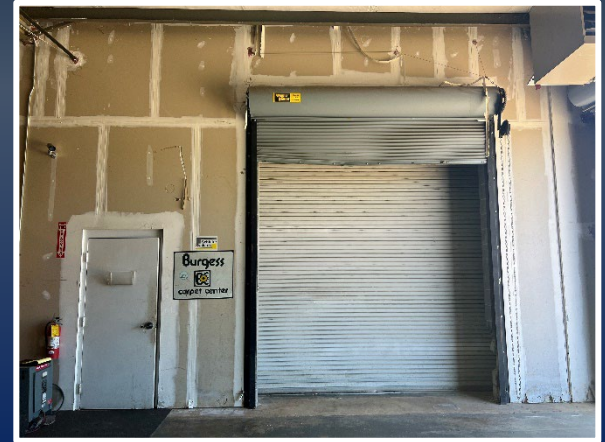
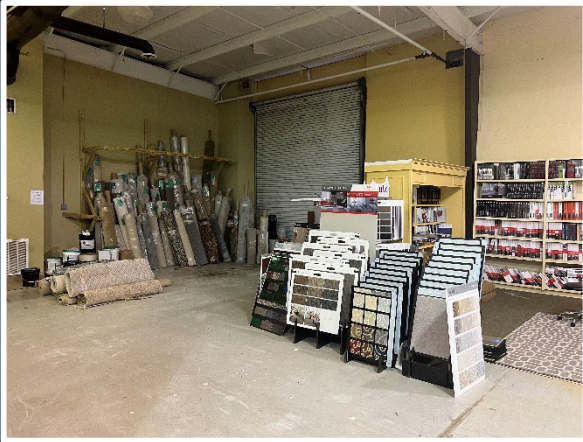
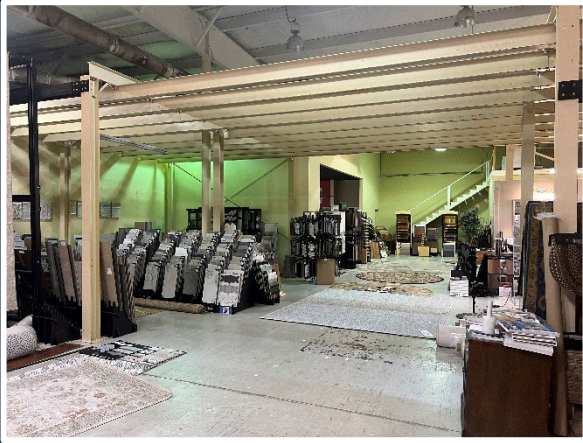
4989 MERCER UNIVERSITY DRIVE
MACON, GEORGIA 31210





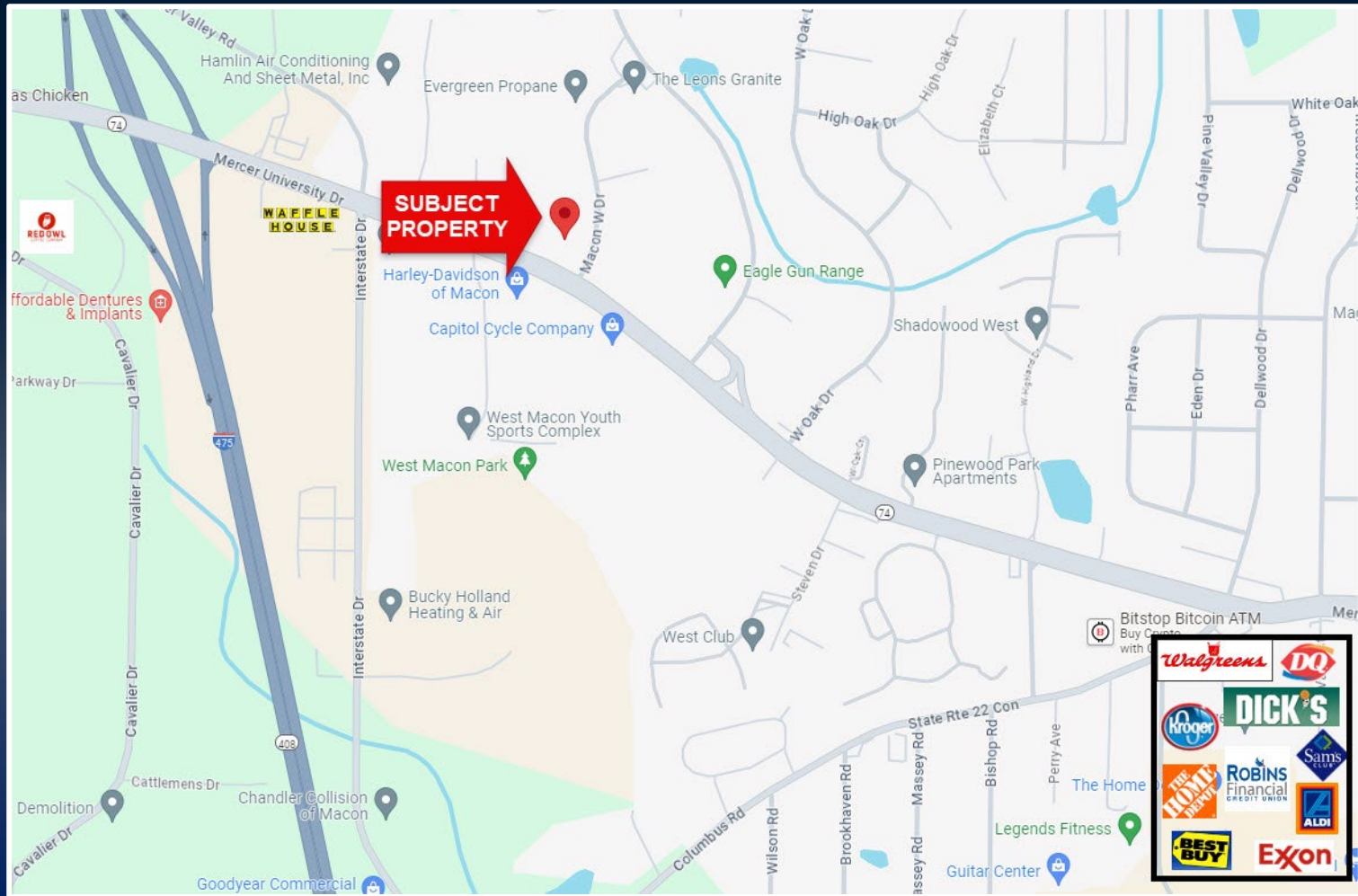
4989 MERCER UNIVERSITY DRIVE
MACON, GEORGIA 31210





4989 MERCER UNIVERSITY DRIVE
MACON, GEORGIA 31210





4989 MERCER UNIVERSITY DRIVE
MACON, GEORGIA 31210

