



FOR LEASE | PRIME RETAIL SPACE / FLEX SPACE

1023 N MONROE

SPOKANE, WA 99201



Property Details

15,316 SF Building (Demisable to 7,658 SF)

- 225,000 Adults (18+) live within 5 miles
- Downtown Spokane has a workforce of 50,000 people
- Street frontage on Monroe St
- There are an additional 400 on-street parking stalls nearby - all within 1/4 mile walking distance
- Kendall Yards, Riverfront Park, Spokane Arena, The Podium, Downtown Stadium are all within walking distance

Property Details

Monroe & Gardner Retail Center is a retrofit development with incredible opportunities to lease retail space in Downtown Spokane directly off of Monroe St. There is very limited land available for new retail space in the Downtown Monroe corridor.

Lease Rate

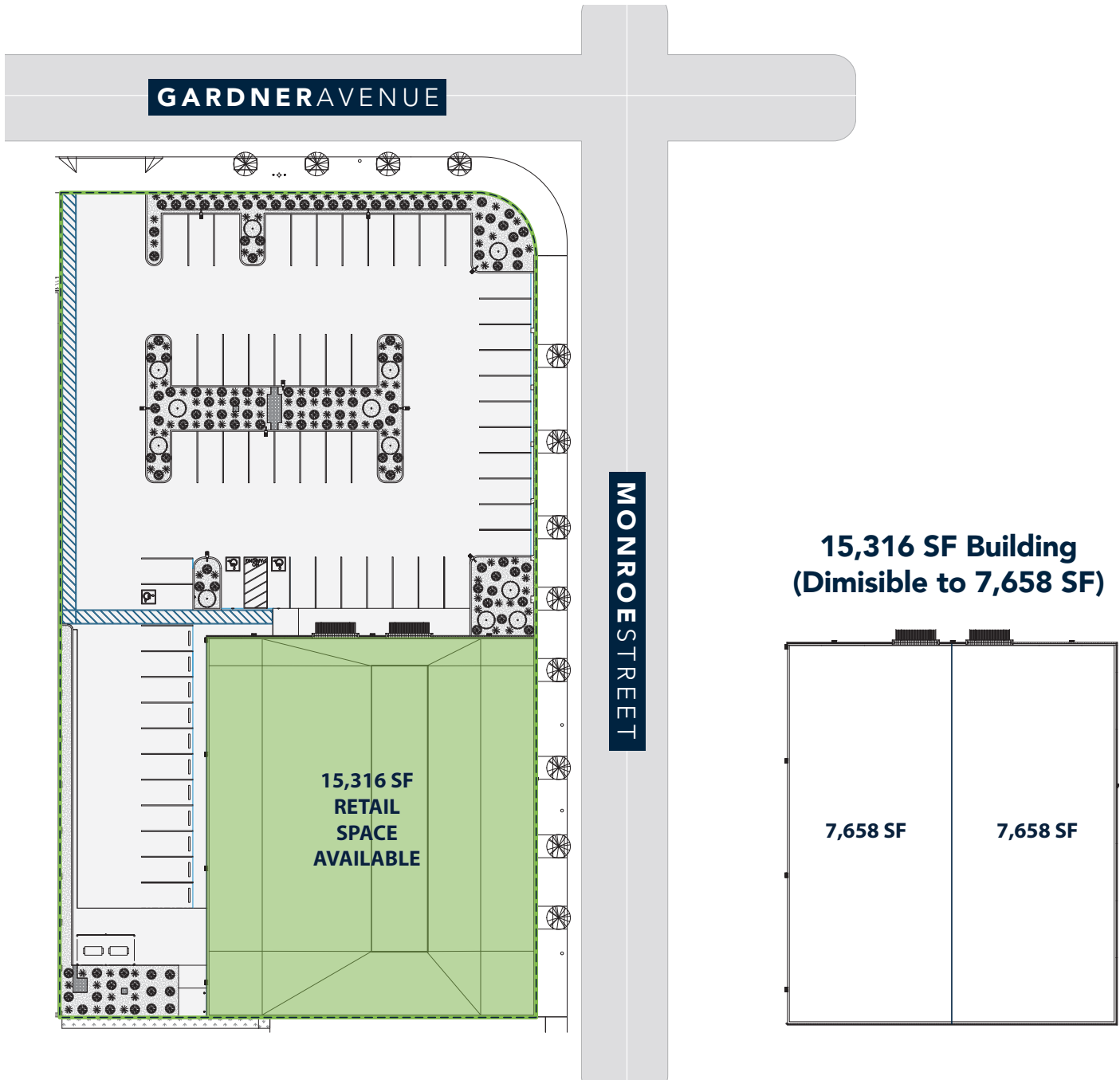
UPON REQUEST

FOR LEASE | RETAIL SPACE

1023 N MONROE | SPOKANE, WA 99201

FLOORPLAN

1023 N MONROE
SPOKANE, WA 99201



FOR LEASE | RETAIL SPACE

1023 N MONROE | SPOKANE, WA 99201

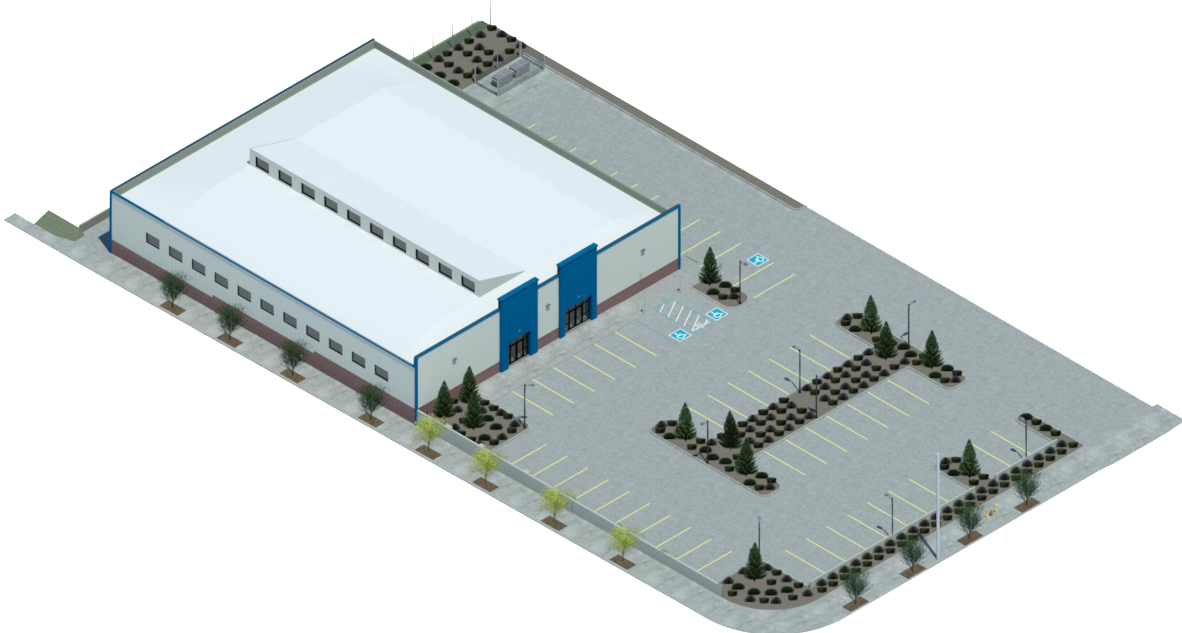
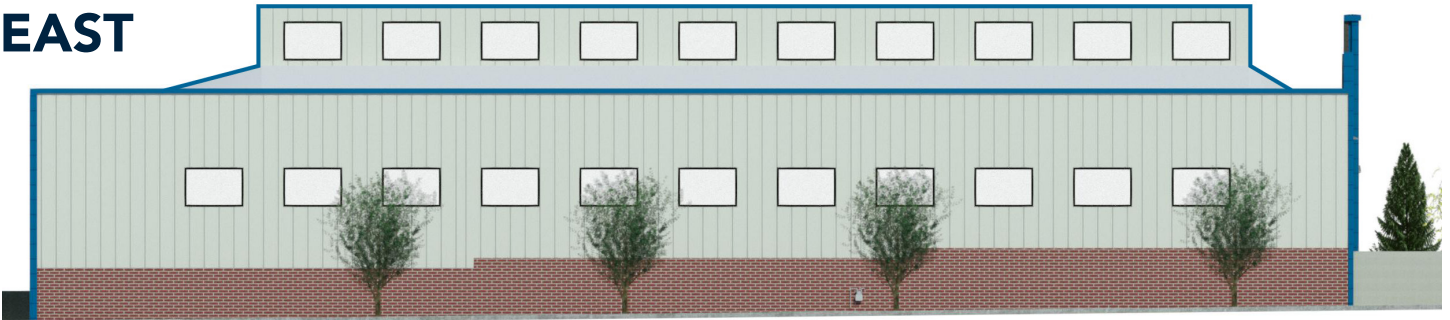
RENDERINGS

1023 N MONROE
SPOKANE, WA 99201

FRONT



EAST



FOR LEASE | RETAIL SPACE

1023 N MONROE | SPOKANE, WA 99201

RENDERINGS

1023 N MONROE
SPOKANE, WA 99201



FOR LEASE | RETAIL SPACE

1023 N MONROE | SPOKANE, WA 99201

MAP

1023 N MONROE
SPOKANE, WA 99201

