

FOR SUBLEASE

9006-B Perimeter Woods Drive

Perimeter Woods Business Park · Charlotte, NC 28216

13,154 SF
TOTAL SPACE

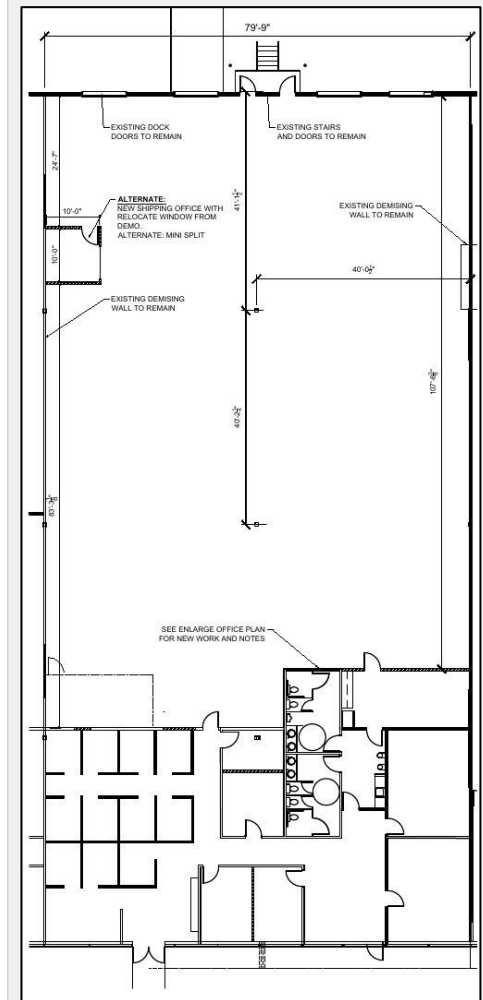
3,989 SF
OFFICE

9,165 SF
WAREHOUSE

PROPERTY HIGHLIGHTS

- Premium office space with warehouse
- **Fully Conditioned Warehouse & Office**
- 3 Dock-High Loading Doors
- 1 Drive-In Door
- 20' Clear Height
- Abundant Natural Light — Extensive Glass Façade
- Perimeter Woods Business Park — Premier I-485 Corridor

FLOOR PLAN



SUBLEASE TERMS

Available: Immediately

Lease Expires: May 31, 2032

Term Remaining: ~6 Years

Rate: Call for Pricing

SUBLEASE AVAILABLE

Suite B · Perimeter Woods Business Park



Matt McLanahan
White Point Partners
704.761.6612 | matt@whitepointpartners.com