

EAGLE BUSINESS PARK
20880 KRAMERIA AVENUE
RIVERSIDE, CALIFORNIA

±78,960 SF
AVAILABLE FOR SUBLEASE



FOR FURTHER INFORMATION, PLEASE CONTACT THE EXCLUSIVE AGENTS:

John Seoane, SIOR
D • 909.373.2946
E • jseoane@lee-assoc.com
DRE #01453455



Dean Glassman
D • 909.373.2940
E • dglassman@lee-assoc.com
DRE #02182602

Lee & Associates - Ontario
3535 Inland Empire Boulevard, Ontario, California 91764
CORP ID #00976995

All information furnished regarding property for sale, rental or financing is from sources deemed reliable, but no warranty or representation is made to the accuracy thereof and same is submitted to errors, omissions, change of price, rental or other conditions prior to sale, lease or financing or withdrawal without notice. No liability of any kind is to be imposed on the broker herein.

EAGLE BUSINESS PARK

20880 KRAMERIA AVENUE
RIVERSIDE, CALIFORNIA

±78,960 SF

AVAILABLE FOR SUBLEASE

- ±78,960 Square Foot Industrial Building
- ±2,980 Square Feet of Office Space
- Master-Planned Business Park
- Sixteen (16) Dock High Doors
- Four (4) Docks with Pit Levelers
- Two (2) Additional Knock-Out Doors
- Two (2) Grade Level Loading Doors
- ±1,460 Pallet Positions
- Racking Included
- 32' Minimum Clear Height at Perimeter
- Fenced + Secured, Paved & Lit Yard Area
- ESFR Sprinkler System (K-25 Heads @ 25 PSI)
- 1,600 Amps of Power, 277/480 Volts (verify)
- ±100 Car Parking Stalls
- 2021 Construction
- Sublease thru October 31, 2026
- Available within ±60 Days



FOR FURTHER INFORMATION, PLEASE CONTACT THE EXCLUSIVE AGENTS:

John Seoane, SIOR
D • 909.373.2946
E • jseoane@lee-assoc.com
DRE #01453455



Dean Glassman
D • 909.373.2940
E • dglassman@lee-assoc.com
DRE #02182602

Lee & Associates - Ontario
3535 Inland Empire Boulevard, Ontario, California 91764
CORP ID #00976995

All information furnished regarding property for sale, rental or financing is from sources deemed reliable, but no warranty or representation is made to the accuracy thereof and same is submitted to errors, omissions, change of price, rental or other conditions prior to sale, lease or financing or withdrawal without notice. No liability of any kind is to be imposed on the broker herein.

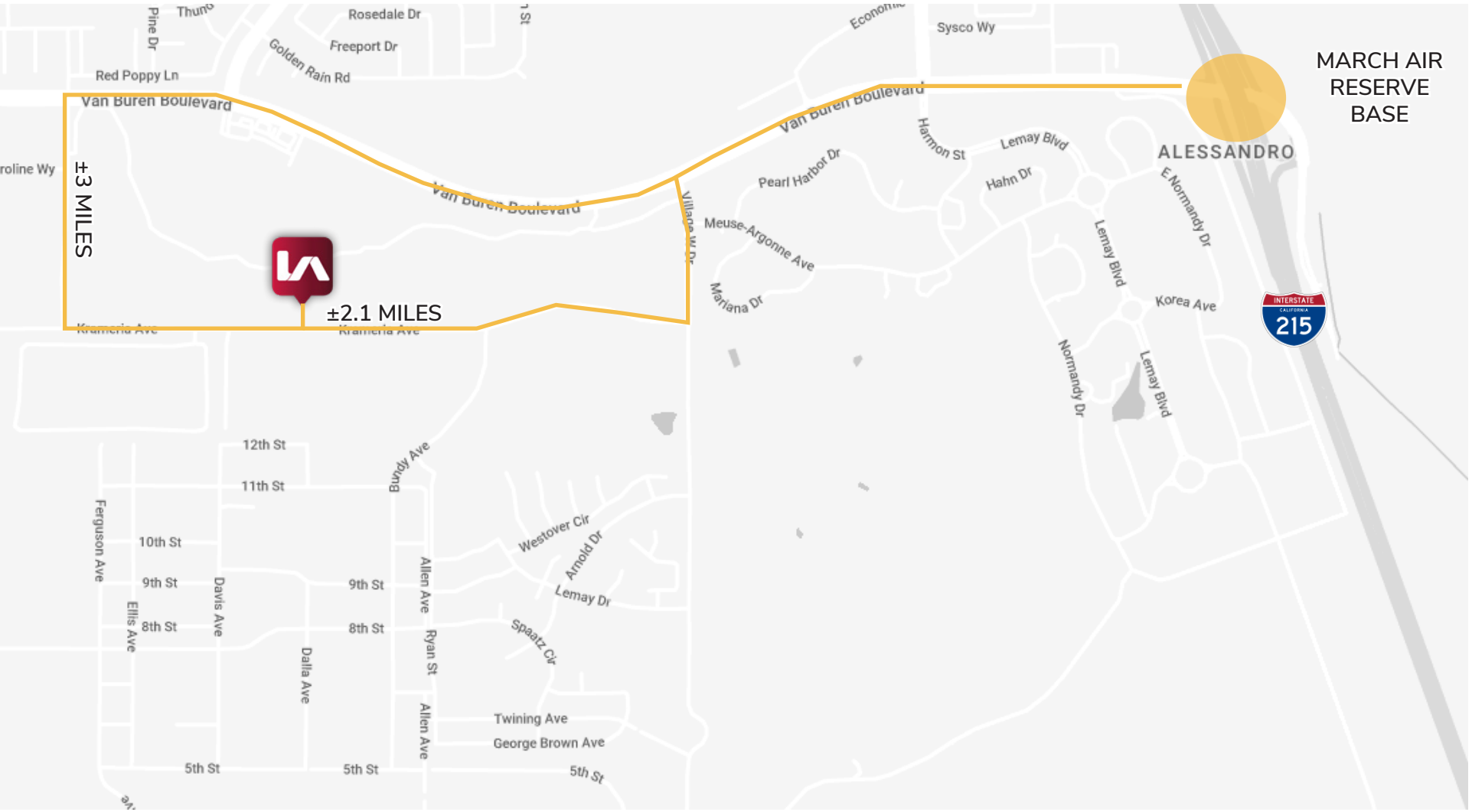
EAGLE BUSINESS PARK

20880 KRAMERIA AVENUE
RIVERSIDE, CALIFORNIA

±78,960 SF

AVAILABLE FOR SUBLEASE

Location Map



FOR FURTHER INFORMATION, PLEASE CONTACT THE EXCLUSIVE AGENTS:

John Seoane, SIOR
D • 909.373.2946
E • jseoane@lee-assoc.com
DRE #01453455



Dean Glassman
D • 909.373.2940
E • dglassman@lee-assoc.com
DRE #02182602

Lee & Associates - Ontario
3535 Inland Empire Boulevard, Ontario, California 91764
CORP ID #00976995

All information furnished regarding property for sale, rental or financing is from sources deemed reliable, but no warranty or representation is made to the accuracy thereof and same is submitted to errors, omissions, change of price, rental or other conditions prior to sale, lease or financing or withdrawal without notice. No liability of any kind is to be imposed on the broker herein.

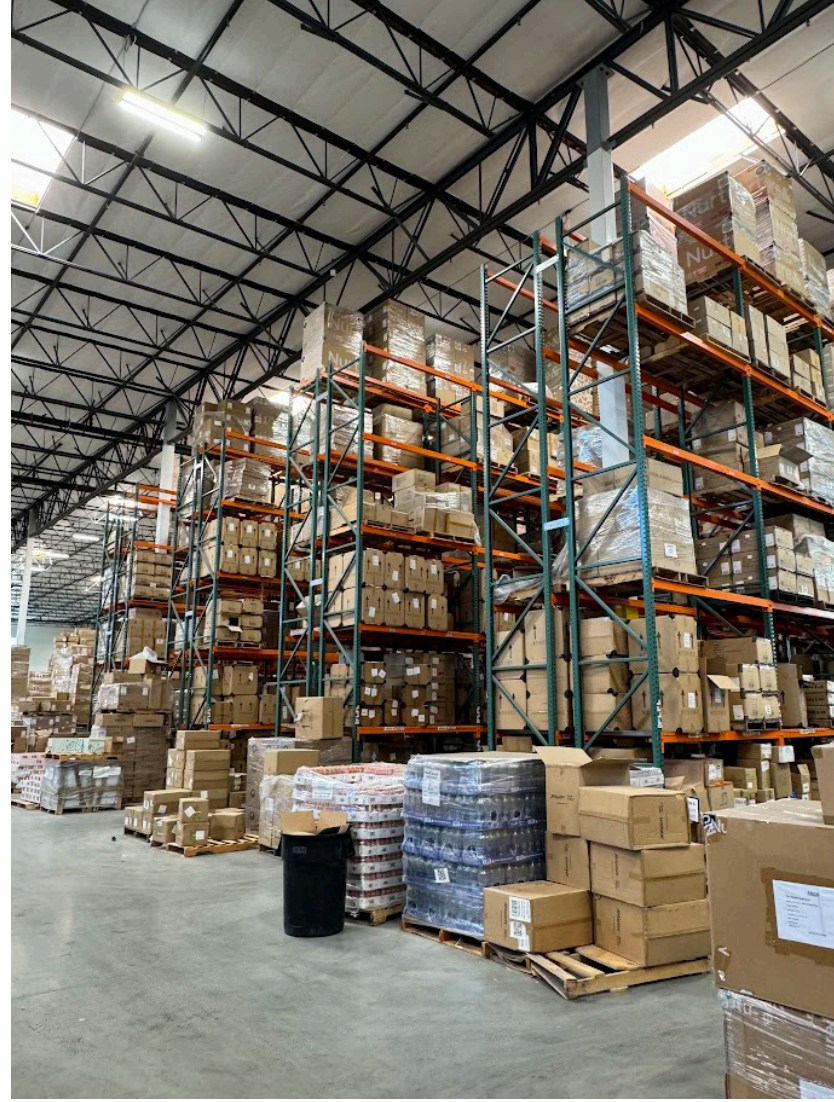
EAGLE BUSINESS PARK

20880 KRAMERIA AVENUE
RIVERSIDE, CALIFORNIA

±78,960 SF

AVAILABLE FOR SUBLEASE

Interior Warehouse Images



FOR FURTHER INFORMATION, PLEASE CONTACT THE EXCLUSIVE AGENTS:

John Seoane, SIOR
D • 909.373.2946

E • jseoane@lee-assoc.com
DRE #01453455



Dean Glassman
D • 909.373.2940

E • dglassman@lee-assoc.com
DRE #02182602

Lee & Associates - Ontario
3535 Inland Empire Boulevard, Ontario, California 91764
CORP ID #00976995

All information furnished regarding property for sale, rental or financing is from sources deemed reliable, but no warranty or representation is made to the accuracy thereof and same is submitted to errors, omissions, change of price, rental or other conditions prior to sale, lease or financing or withdrawal without notice. No liability of any kind is to be imposed on the broker herein.