

# COMMERCIAL SPACE FOR LEASE

## 2 MILE DEMOGRAPHICS:

ADULT POPULATION	28,704
AVERAGE HH INCOME	\$165,446
ANNUAL HH CONSUMER SPENDING	\$48,801

## LOCATION VIA GOOGLE MAPS:



# WINTERHAM PAD SITE

15111 Washington St, Haymarket VA 20169

## OVERVIEW:

Available for Ground Lease is this Pad Site which is zoned B-2 on Rte-55. Located directly next to Winterham Plaza (a mixed-use retail/residential center), less than a mile from I-66 and within 1 mile of both the Crossroads Village Center and the Haymarket Village Center. This lot sees 10,000 VPD on Rte-55 and was previously approved for a 12,000-13,000 SF retail/residential mixed-use building.

## SITE VIEW:



PAD SITE RENDERING:



COMMERCIAL SPACE  
FOR LEASE

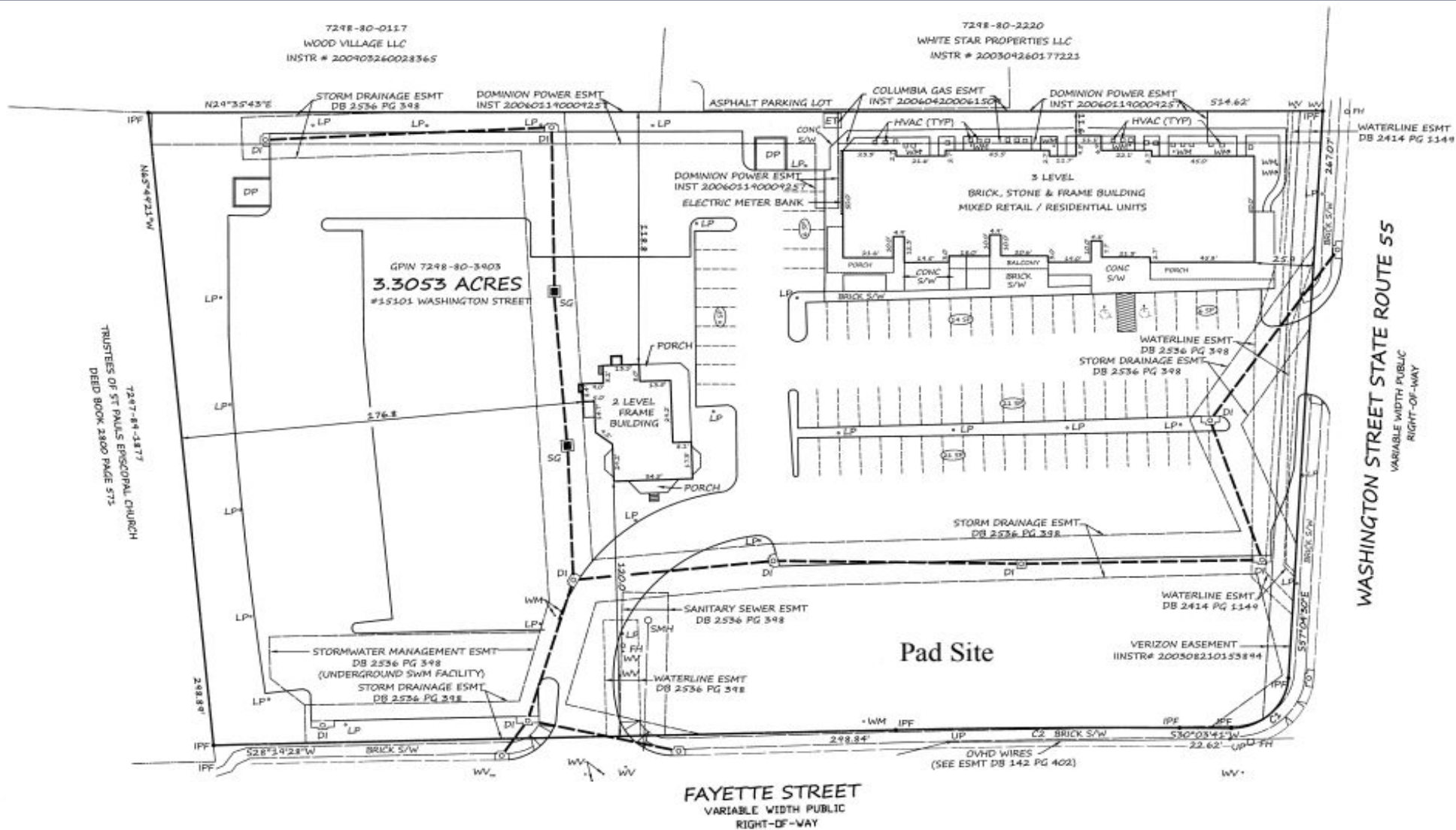
**WINTERHAM PAD SITE**  
15111 Washington St, Haymarket VA 20169

[WWW.WOODMONT.US](http://WWW.WOODMONT.US)

DAVID SMITH

CELL: (202) 258-3175 | OFFICE: (301) 652-2303  
dsmith@woodmont.us | 4919 Bethesda Ave Suite 200, Bethesda, MD

SITE PLAN:



COMMERCIAL SPACE  
FOR LEASE

WINTERHAM PAD SITE  
15111 Washington St, Haymarket VA 20169

WWW.WOODMONT.US

DAVID SMITH

CELL: (202) 258-3175 | OFFICE: (301) 652-2303  
dsmith@woodmont.us | 4919 Bethesda Ave Suite 200, Bethesda, MD