

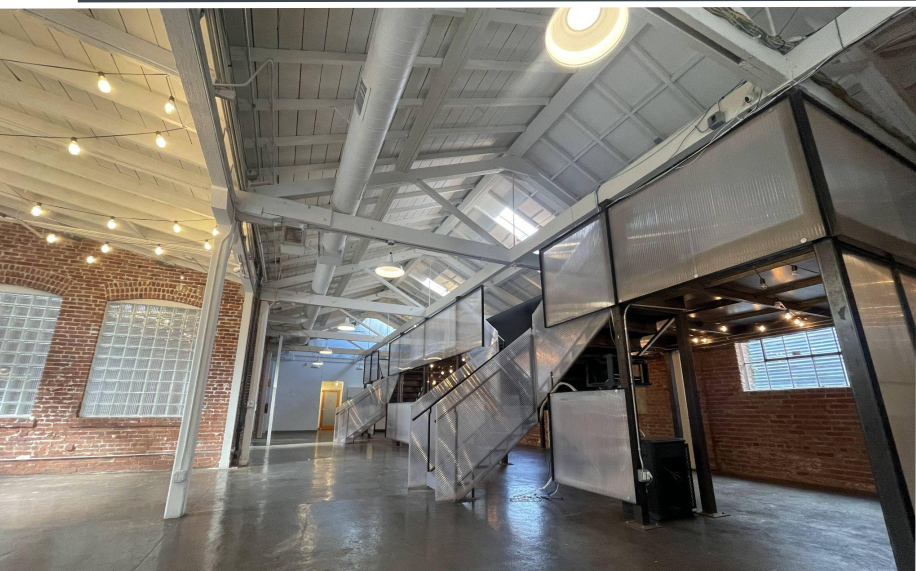
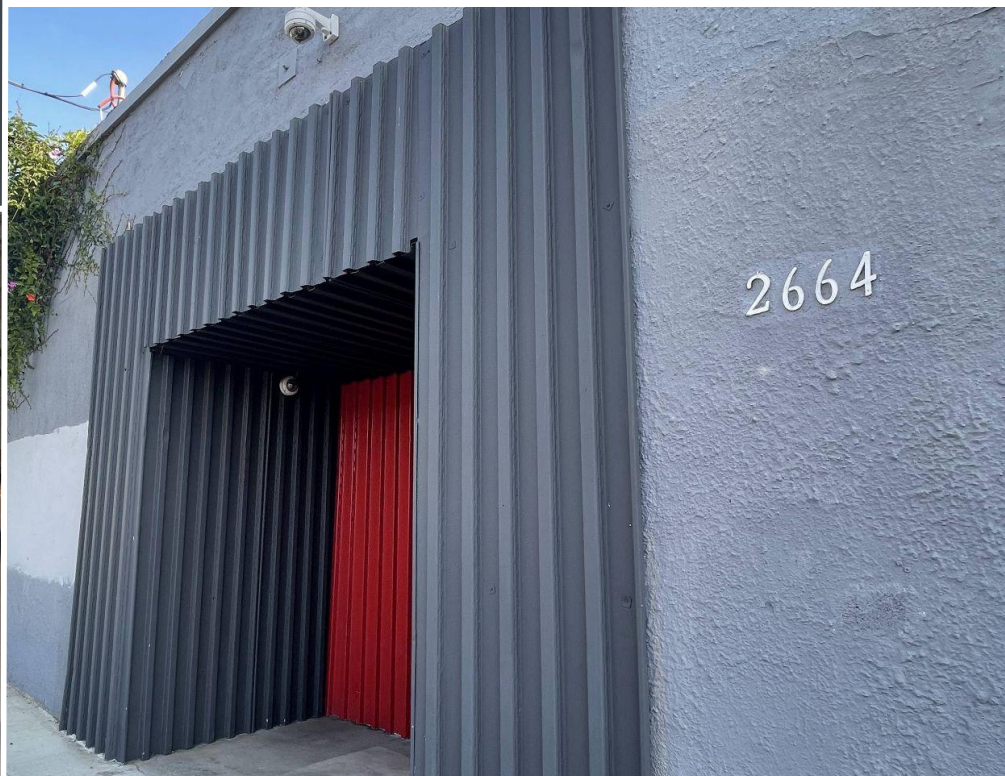
LACY STUDIO

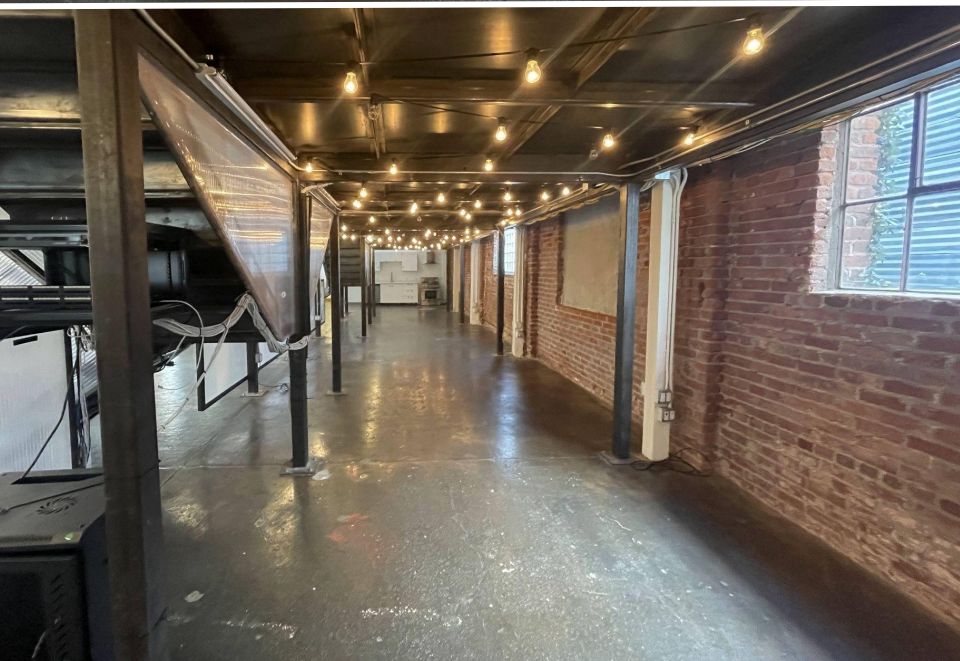
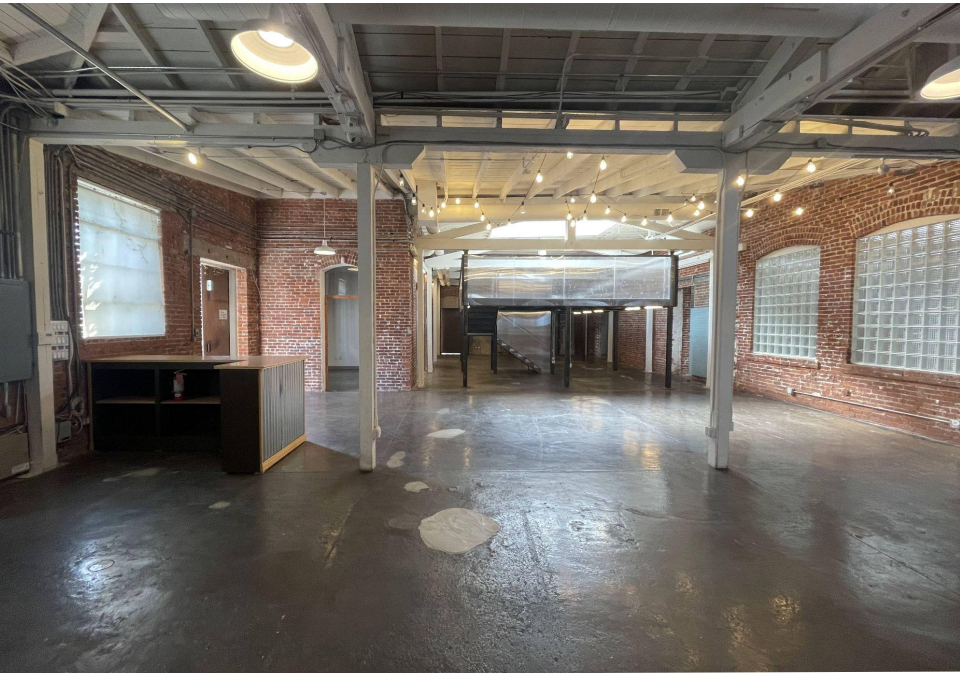
2664 LACY STREET || LOS ANGELES



OPPORTUNITY OVERVIEW

District Realty Group is proud to present a unique opportunity to lease 2664 Lacy Street, a rare creative office spaces in the booming Lincoln Heights neighborhood. Lacy Studio is a pure transformation of historic industrial spaces into modern work spaces. Simply quiet, serene, private and relaxing. The property is a mecca for creative and productive entrepreneurs who can truly utilize the unique spaces in a private and quiet setting. Lacy Studio is a product of postindustrial Los Angeles.





TERMS & SPECIFICATIONS

ASKING RATE

Negotiable

CURRENT USE

Creative Office - Live/Work

AVAILABLE SIZES

Suite A: 7,815 RSF +/-

Suite B: 5,225 RSF +/-

AVAILABILITY

Immediately

PARKING

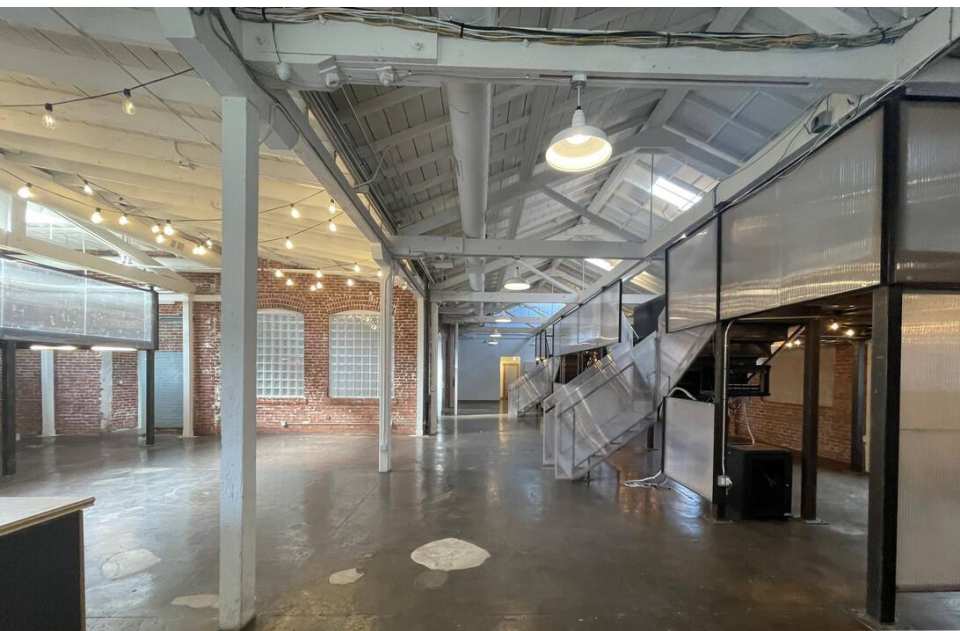
Includes 7-10 Free Parking Spaces (Up to 5 more can be rented for \$75/month). There Is Also Limited Free Street Parking In Front Along Lacy Street. **

FEATURES


- High Ceilings
- Turnkey Efficient Layout
- Prime Location With Easy Freeway Access
- Large Patio Space*
- Mezzanine With Dual Level Workstations

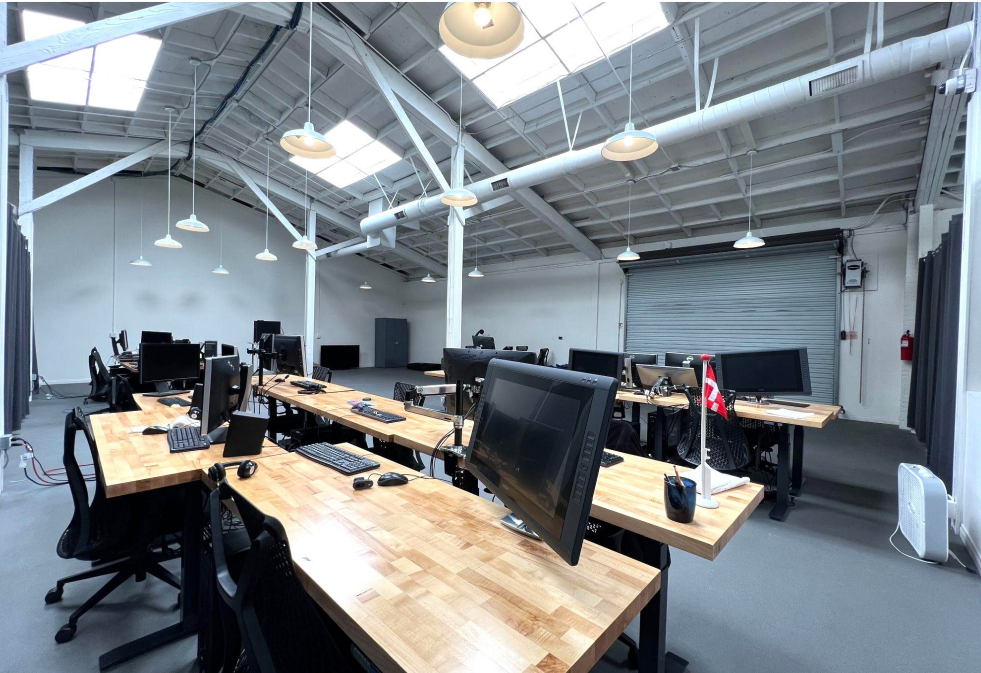
**Tenant may use the southern half of the outdoor patio, on east side of the space.*

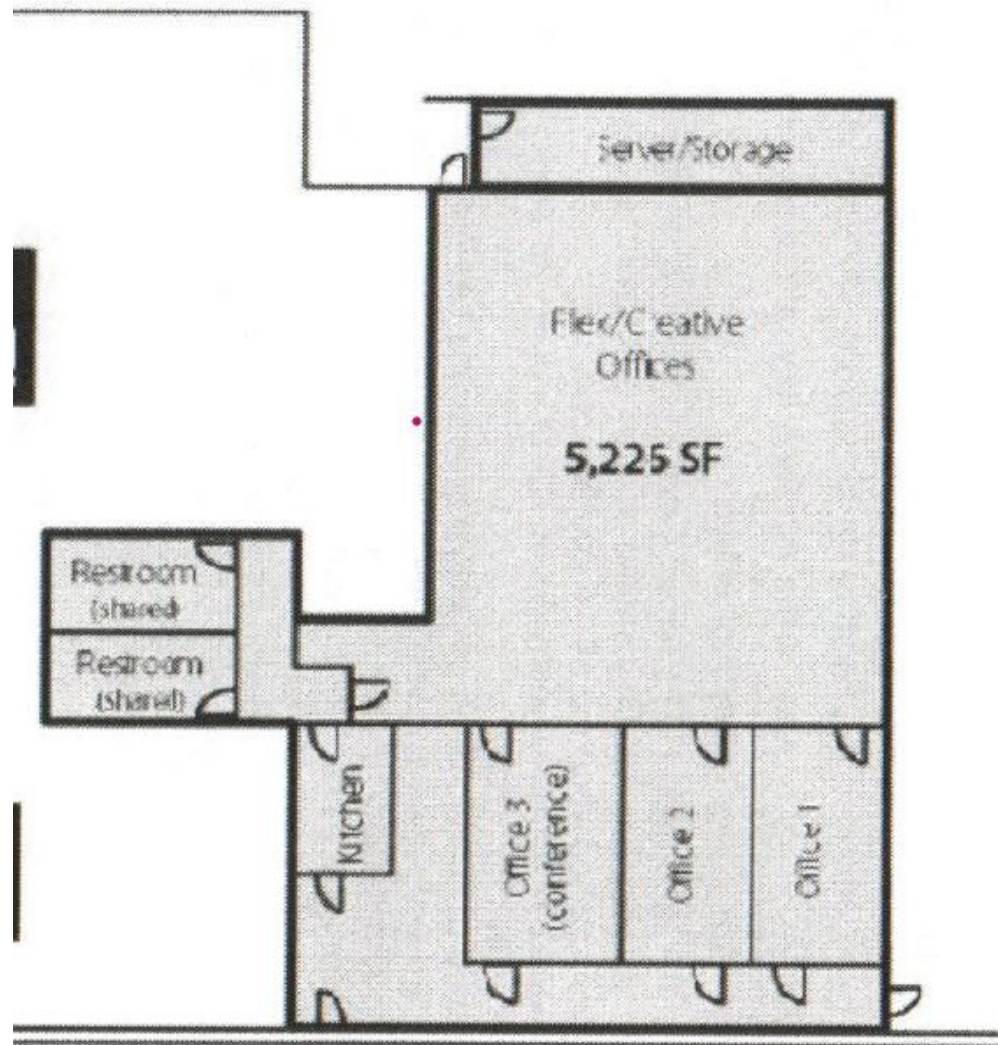
*** Subject to which space is leased.*



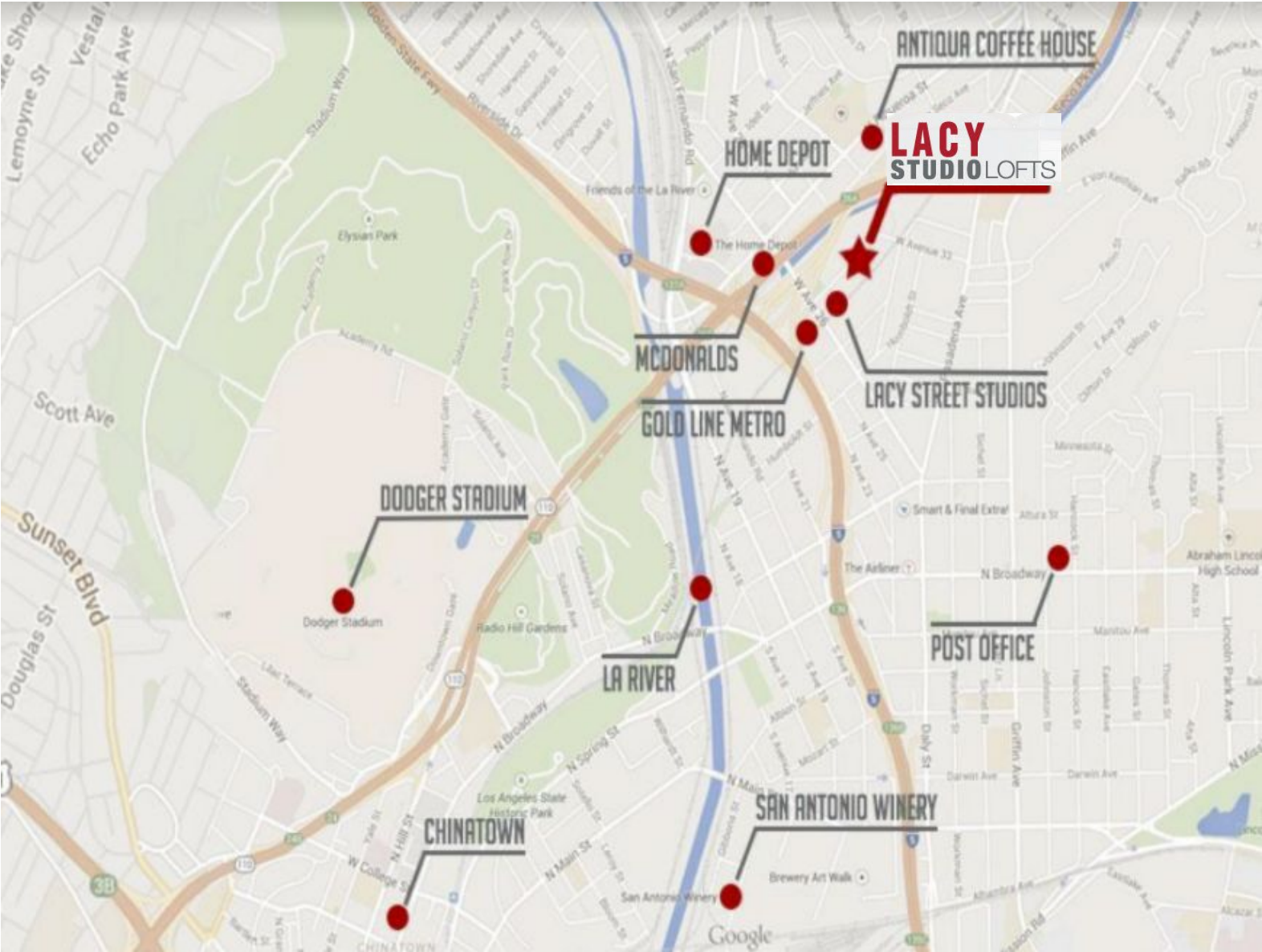


 Area is not included





Lacy Street



2664 LACY STREET



EON I. LEW
DRE: 01730294
TEL: 213 769 6262
EMAIL: eon@districtrealtygroup.com
www.districtrealtygroup.com