

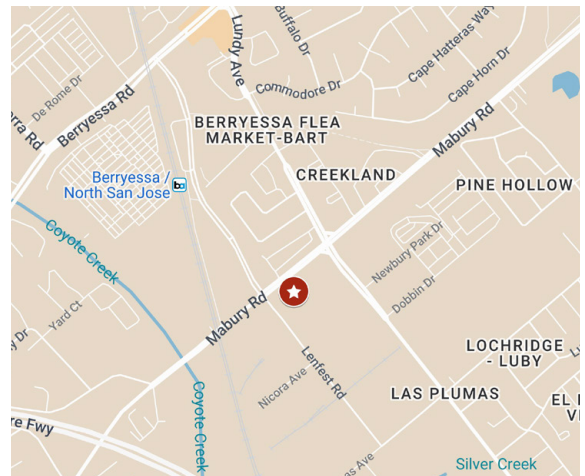


±3,325 SF Industrial Office For Lease

**1648B MABURY ROAD
SAN JOSE, CA**

Space Highlights

- 10% HVAC Office Space
- 10 x 12 Grade Level Door
- 200 Amps 208 V Power
- Sprinklered



For information, please contact:

Martin Chiechi

Senior Managing Director

t 408-987-4178

martin.chiechi@nmrk.com

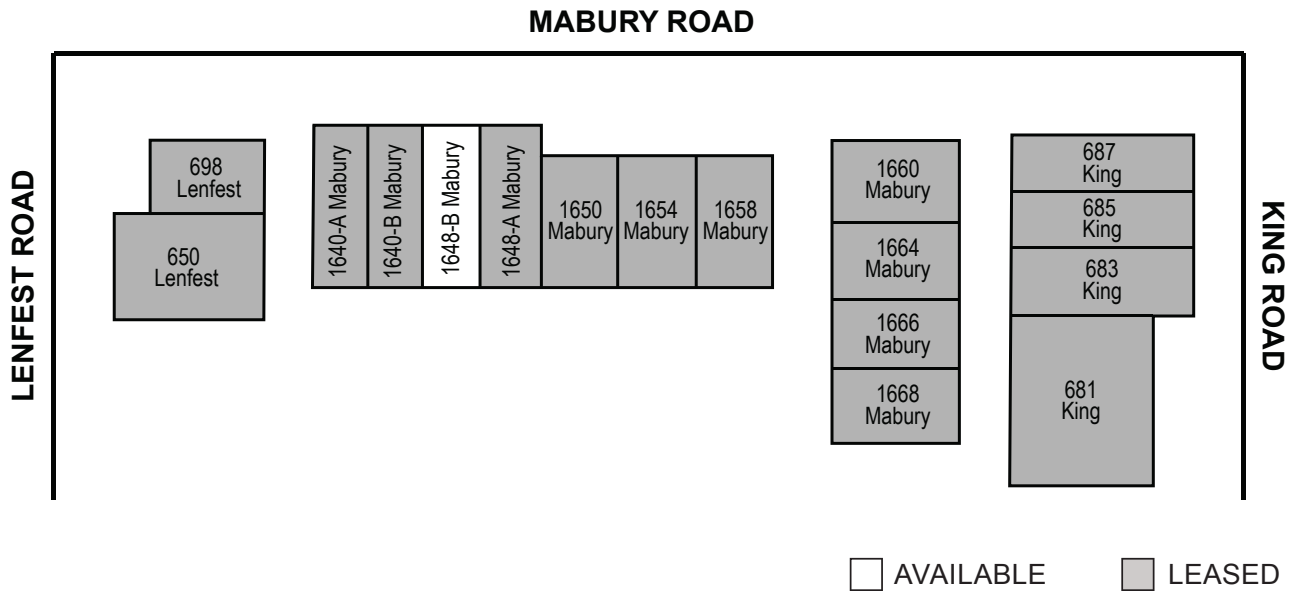
CA RE License #00806069

nmrk.com

NEWMARK

The distributor of this communication is performing acts for which a real estate license is required. The information contained herein has been obtained from sources deemed reliable but has not been verified and no guarantee, warranty or representation, either express or implied, is made with respect to such information. Terms of sale or lease and availability are subject to change or withdrawal without notice. MP-800 • 12/24

Site Plan



For information, please contact:

Martin Chiechi

Senior Managing Director

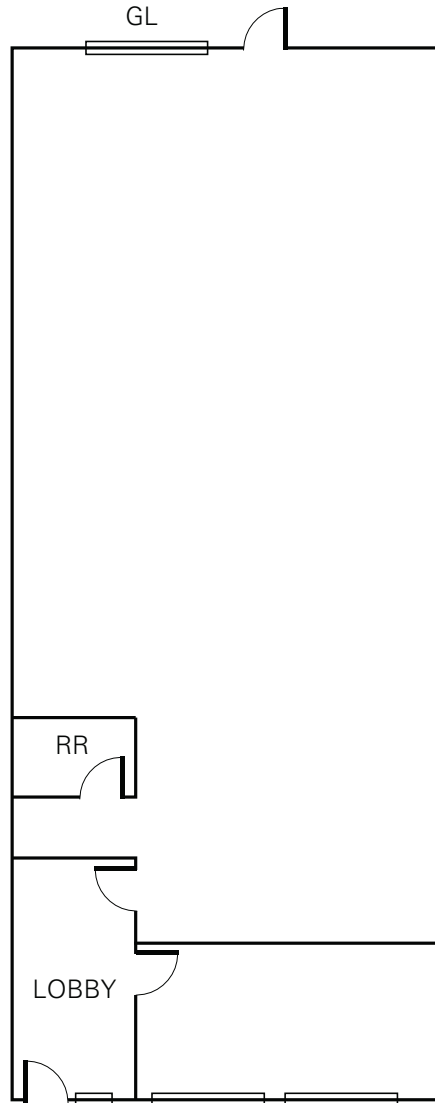
t 408-987-4178

martin.chiechi@nrmk.com

CA RE License #00806069

nrmk.com

Floor Plan



*This floor plan is not drawn to scale.

For information, please contact:

Martin Chiechi

Senior Managing Director

t 408-987-4178

martin.chiechi@nmrk.com

CA RE License #00806069

nmrk.com

NEWMARK

The distributor of this communication is performing acts for which a real estate license is required. The information contained herein has been obtained from sources deemed reliable but has not been verified and no guarantee, warranty or representation, either express or implied, is made with respect to such information. Terms of sale or lease and availability are subject to change or withdrawal without notice. MP-800 • 12/24

Floor Plan



*This floor plan is not drawn to scale.

For information, please contact:

Martin Chiechi

Senior Managing Director

t 408-987-4178

martin.chiechi@nmrk.com

CA RE License #00806069

nmrk.com

NEWMARK

The distributor of this communication is performing acts for which a real estate license is required. The information contained herein has been obtained from sources deemed reliable but has not been verified and no guarantee, warranty or representation, either express or implied, is made with respect to such information. Terms of sale or lease and availability are subject to change or withdrawal without notice. MP-800 • 12/24