

19

GARFIELD PLACE

CENTRAL
BUSINESS DISTRICT

OFFICE SPACE
AVAILABLE
FOR LEASE



CHRIS PFEIFFER
REALTOR® | ARCHITECT
(513) 374-6494
cpfeiffer@comey.com

the
PFEIFFER
group
selling by design

**Comey &
Shepherd**
REALTORS®

19 GARFIELD PLACE

THE HISTORIC DOCTOR'S BUILDING at 19 Garfield Place is situated on Piatt Park and is one of Cincinnati's best examples of late Gothic Revival architecture for a commercial building in the Central Business District. The Doctor's Building is listed on the National Register of Historic Places and was designed by Tietig and Lee and originally constructed in 1923 as commercial office space for local physicians. Today, the building serves as the global, regional and local headquarters for multiple companies, including brand strategy consultants LPK.



OFFICE

4 SPACES AVAILABLE

950 SQ FT - 5,560 SQ FT

\$18/SQ FT/YEAR

\$1.50/SQFT/MONTH

- \$18.00/SF modified gross
- Tenant responsible for cleaning, interior maintenance, pro-rata share of electric
- 3-yr min. lease term
- T/I possible, but not included in base rent
- Controlled entry lobby
- Freight elevator
- Interior directory/signage
- Piatt Park setting
- Historic architecture & prominent location
- Two blocks from Cincinnati Streetcar Connector
- Abundant parking available nearby



LEASING TERMS

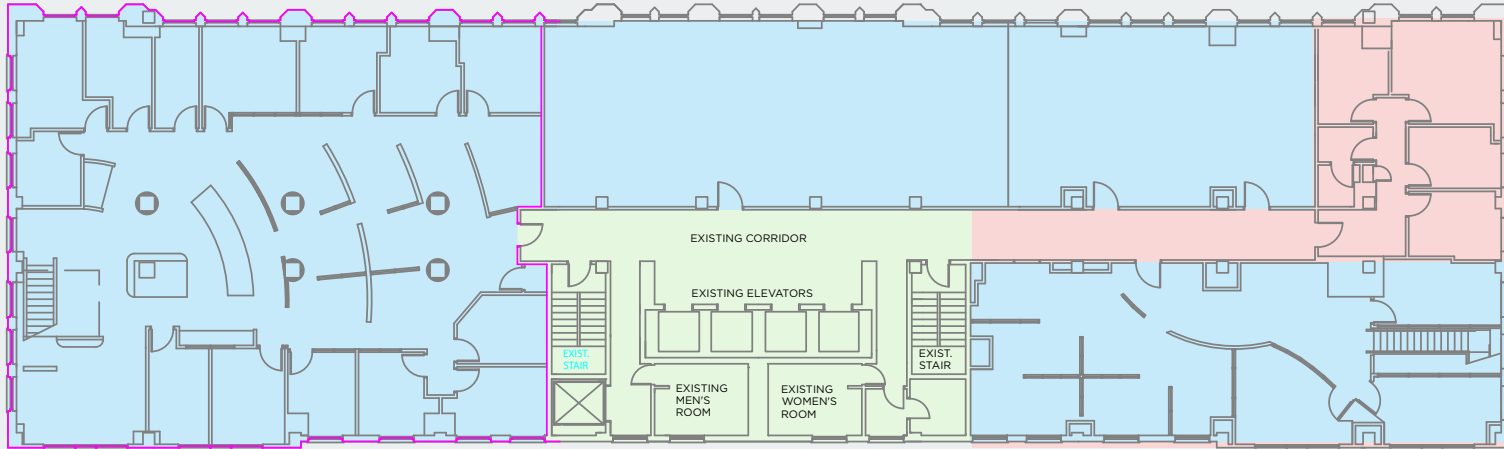


SECOND FLOOR PLAN

Suite 2 West
4,615 SQ FT
Immediate Occupancy

Suite 215
1,758 SQ FT
2025 Occupancy

Suite 211
950 SQ FT
Sublease Opportunity



Available For Lease

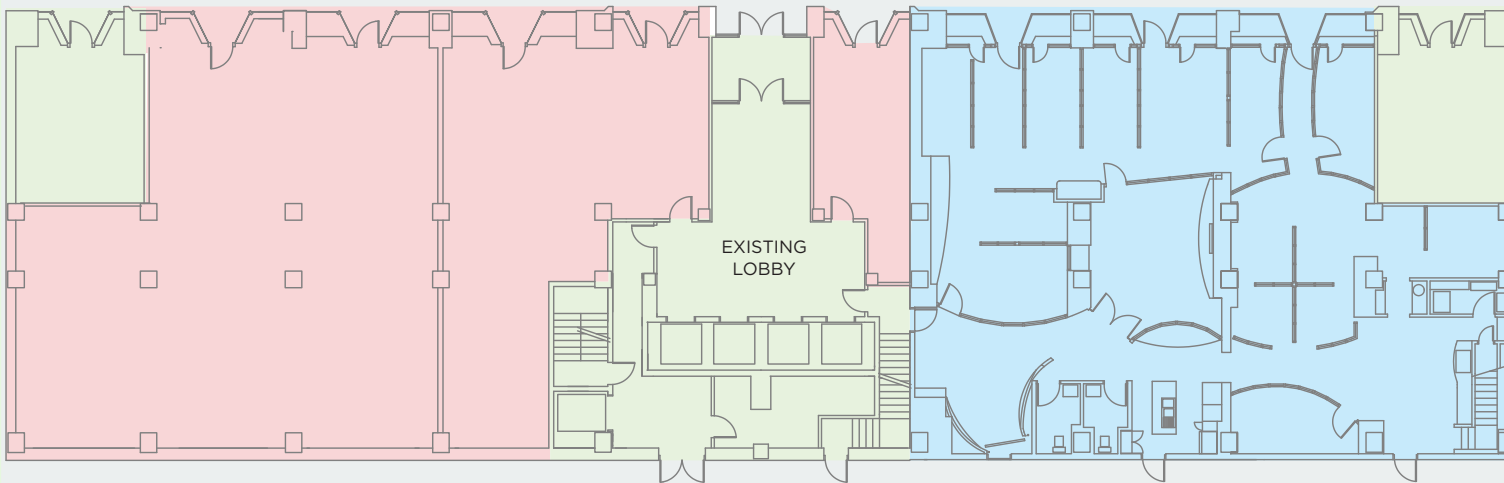
Common Space

Leased Space

▲
Suite 15
1,635 SQ FT (Floor 2)
5,560 SQ FT (total)
Immediate Occupancy

Suite 15
3,925 SQ FT (Floor 1)
5,560 SQ FT (total)
Immediate Occupancy
▼

FIRST FLOOR PLAN



SUITE 2 WEST



SHARED LOBBY





