

For Sublease

±2,556 SF

Medical Office Suite



1300 Hospital Dr. Ste 220

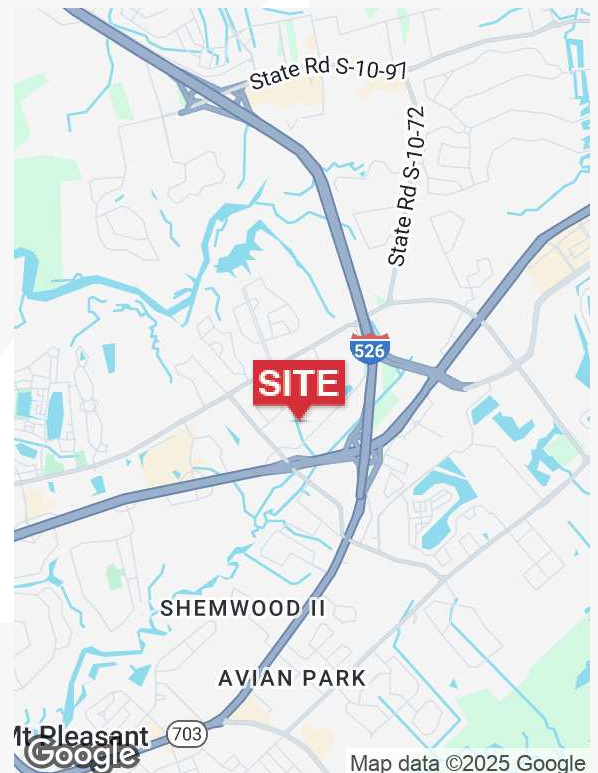
Mount Pleasant, South Carolina 29464

Property Description

East Cooper Medical Center is a ±60,809 SF three-story medical office building located in the heart of Mt. Pleasant's medical corridor. The building is close to I-526, Hwy 17, East Cooper Hospital and Vibra Hospital of Charleston. Suite 220 is a ±2,556 SF open floor plan medical office available for sublease immediately.

Property Highlights

- Second floor medical office suite for sublease
- Ample free parking available on-site
- Sublease term expires 8/31/2028
- TMS #: 559-00-00-190
- Available Immediately!
- **Lease Rate: \$34/SF, Full Service**



For more information

Thomas M. Boulware, SIOR, CCIM

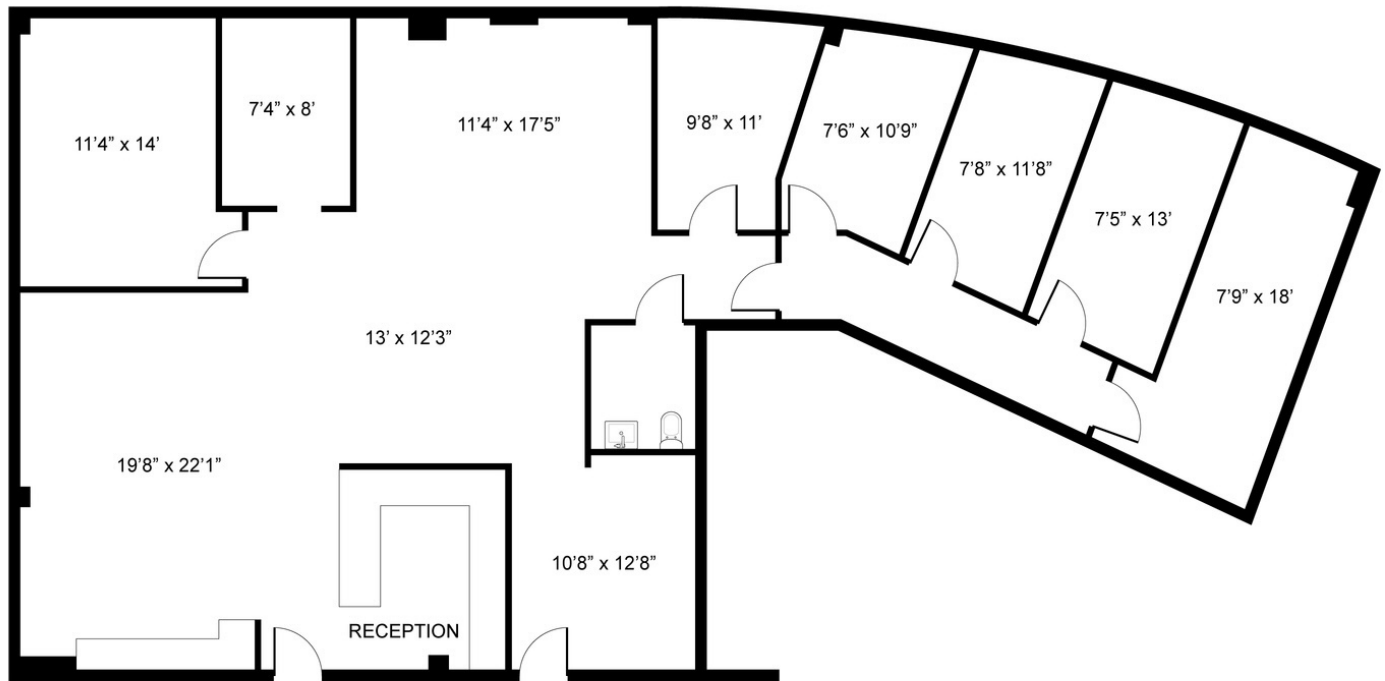
843 270 9124

tboulware@naicharleston.com

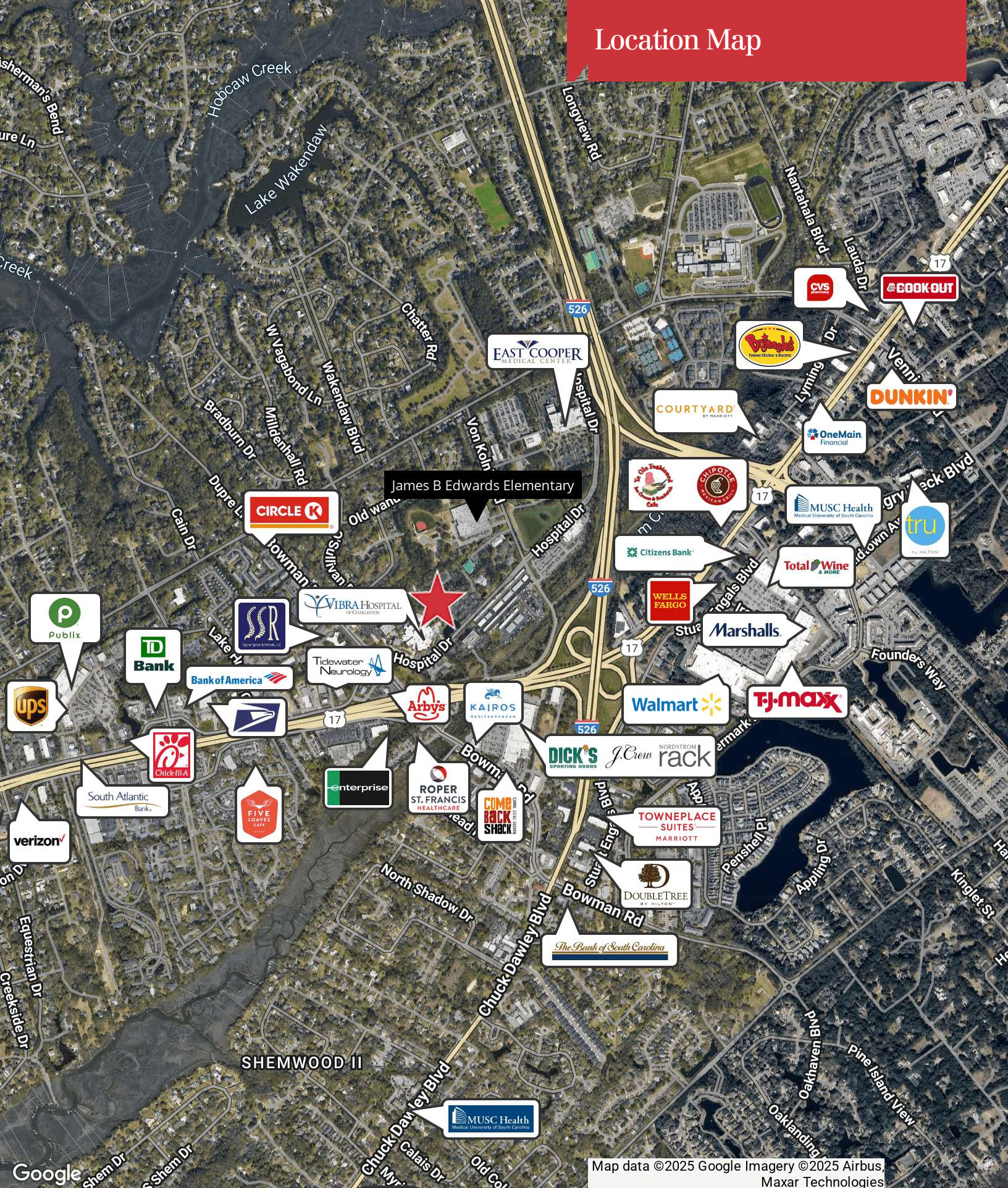
Interior Photos



Floor Plan + Exterior Photo



Location Map



Map data ©2025 Google Imagery ©2025 Airbus,
Maxar Technologies

Location Maps

