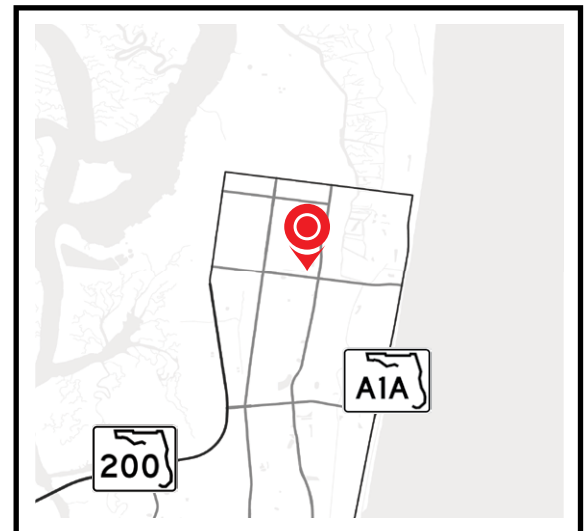


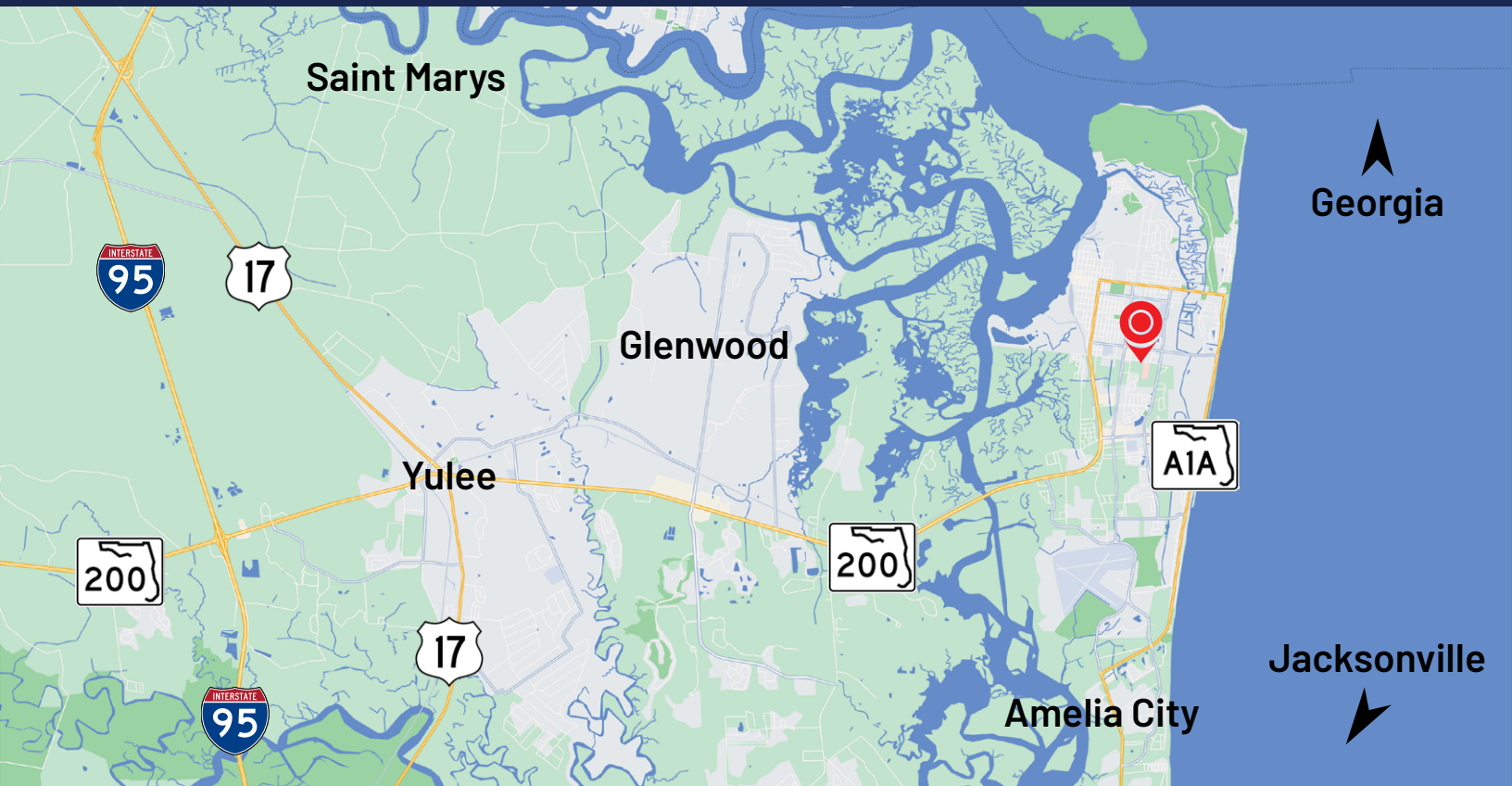


1865 Lime Street | Fernandina Beach, Florida 32034

Medical - Professional Office Space

- New Multi-use Development at Fernandina Beach
- Professional/Medical and Retail Opportunity Available
- Traffic Count: 12,015± AADT on 14th St & Lime St
- Access from the Baptist Medical Center
- Parking Ratio: estimated 6.5± per 1000sf
- Two Story 10,000 SF, Three Story 15,000 SF





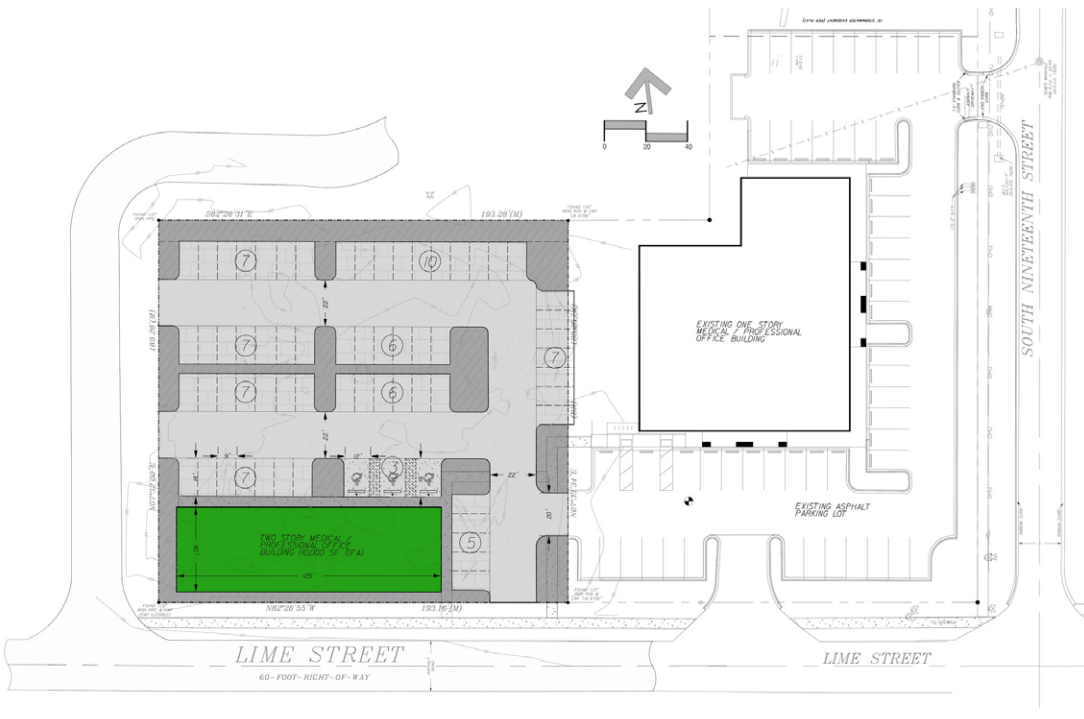
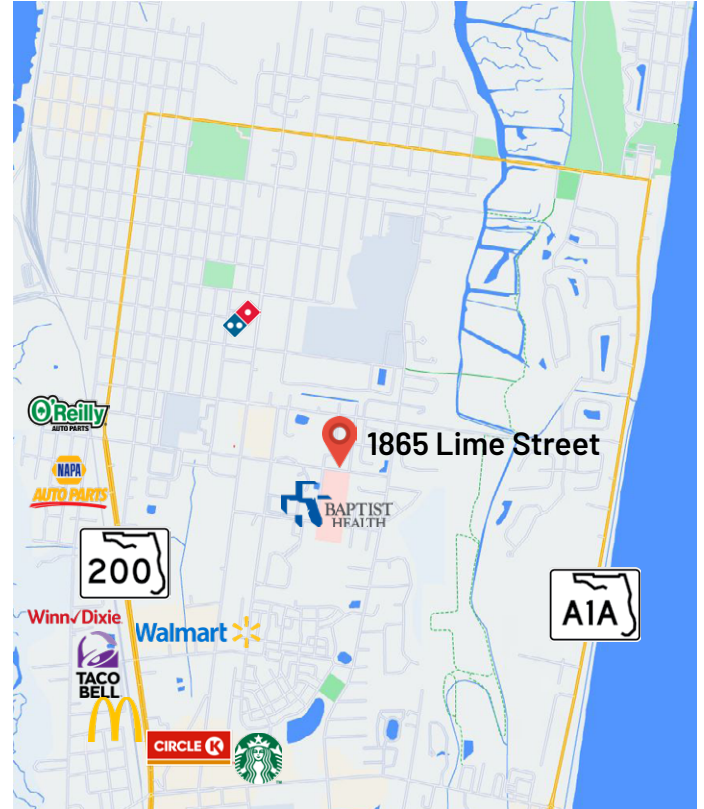
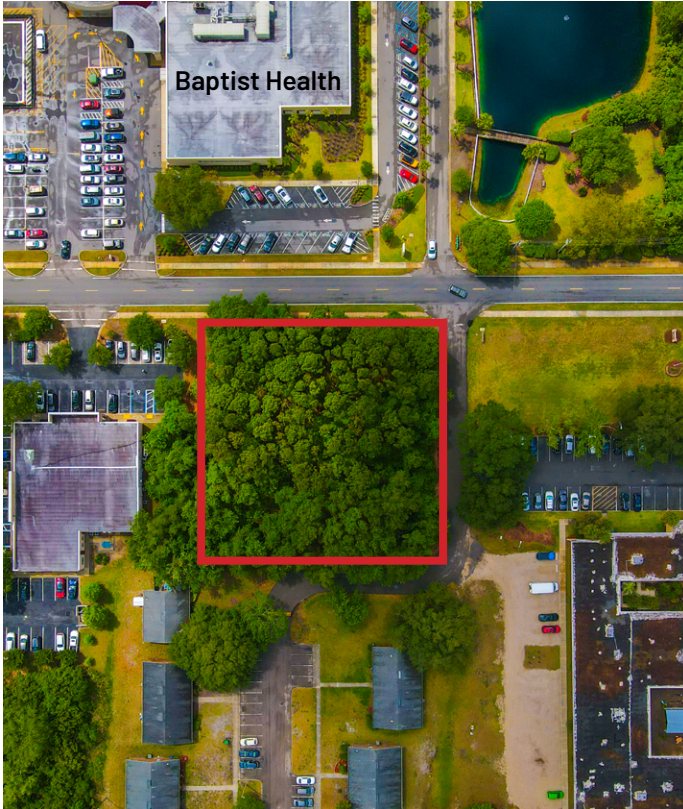
Demographic Information

HOUSEHOLDS

	2 Mile	3 Mile	10 Mile
2010 Households	5,692	9,310	20,680
2022 Households	6,527	12,055	27,954
2027 Projection	7,784	14,548	33,551

INCOME

	2 Mile	3 Mile	10 Mile
Average Household Income	\$88,715	\$94,777	\$94,348
Median Household Income	\$84,253	\$69,893	\$72,043





Listing Agents



Mert Kerimoglu
Senior Advisor
Mobile: (617) 899-3046
Mert.Kerimoglu@crossregions.com



Taylor Rice
Sales Associate
Mobile: (516) 816-9745
Taylor.Rice@crossregions.com