

For Sale

±1,119 SF

1458 S San Pedro St #110
Los Angeles, CA 90015



For more information, please contact:

Daniel Park

(213) 446-0396

Danielpark777@hotmail.com

DRE# 01227056

PARK INDUSTRIAL

SPECIALIZING IN INDUSTRIAL REAL ESTATE SERVICES

Park Industrial Realty
800 McGarry St, 5th Floor
Los Angeles, CA 90021
Corporation DRE# 01983713

Property Information

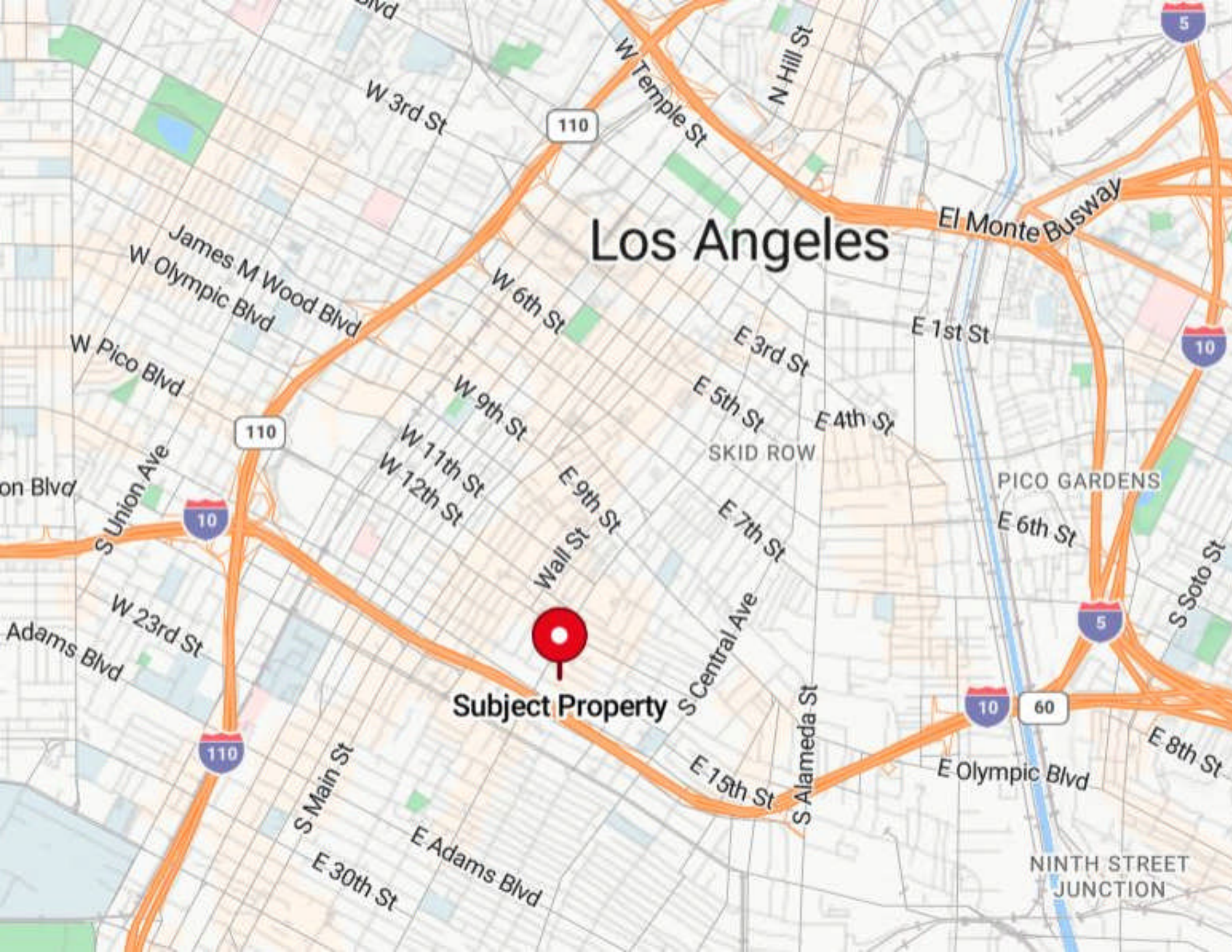
Address:	1458 S San Pedro St #110 Los Angeles, CA 90015	<ul style="list-style-type: none">• First floor commercial condo unit in LA FACE Mart in Downtown LA
Unit SF:	1,119 SF	<ul style="list-style-type: none">• At the center of Fashion District
Year Built:	2008	<ul style="list-style-type: none">• LA FACE Mart is a 300,000 SF mall type retail/office equipped with 10 elevators, 8 escalators and 750 parking spaces.
Ceiling Height:	18'	
Construction:	Reinforced Concrete	<ul style="list-style-type: none">• Plenty of parking for tenants & visitors
Zoning:	M2	<ul style="list-style-type: none">• 18 feet high ceiling
Sale Price:	\$400,000 (\$357.46/SF)	<ul style="list-style-type: none">• Great for creative space, studio and/or any professional office use• Very secure and safe with onsite security personnel• Close to 10 freeway• Motivated Seller

All information has been furnished from sources which we deem reliable, but for which we assume no liability. All measurements are approximate. Broker/Owner do not warrant its accuracy. Buyer/Lessee must verify all information.

Los Angeles



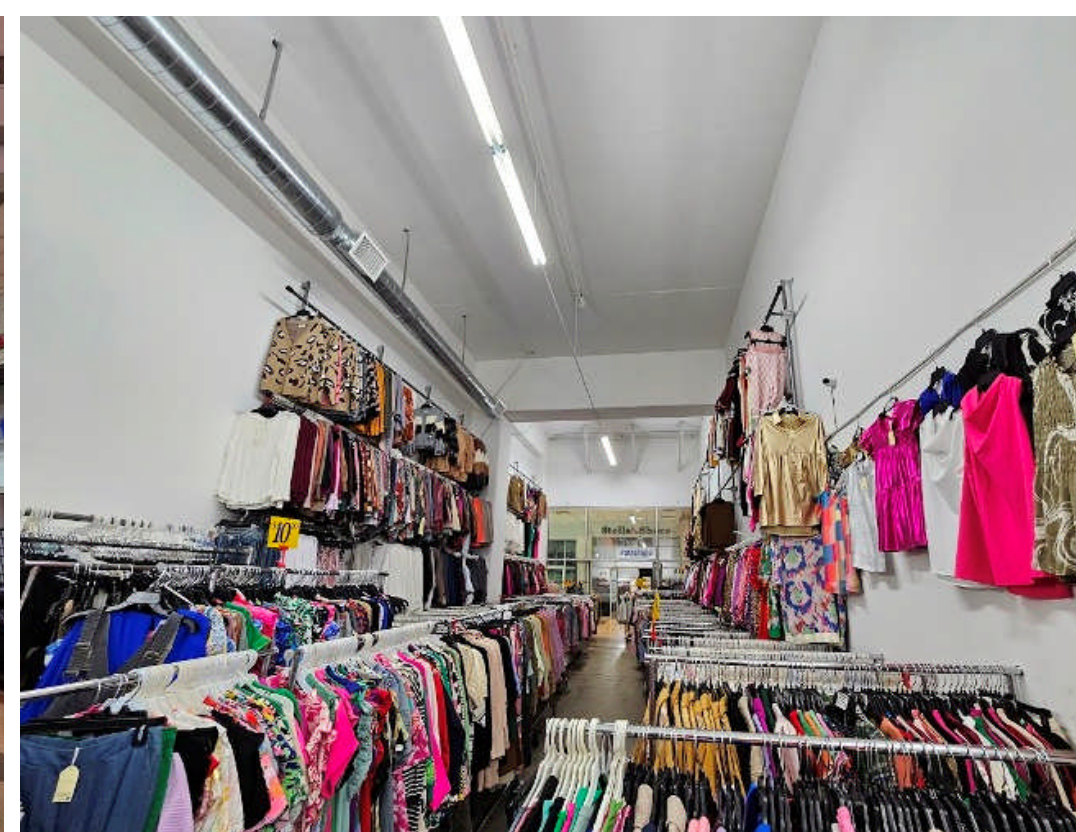
Subject Property



B & S Sales Inc.









LA FACE
MART

1450
LA BAY BLVD
LOS ANGELES, CA 90012