

6 EAST 46TH STREET

BETWEEN 5TH & MADISON AVENUES | MIDTOWN



6 EAST 46TH STREET

BETWEEN 5TH & MADISON AVENUES | MIDTOWN

PROPERTY DETAILS

SIZE: 1,000 SF Ground Floor (approx)
800 SF Basement

FRONTAGE: 15'

CEILING HEIGHT: 11'

POSSESSION: 04/01/2026

TRANSPORTATION: **B D F M E**

HIGHLIGHTS

- Easily accessible via Grand Central Station transit hub
- Situated in the heart of Midtown Manhattan
- Steps from Bryant Park and Rockefeller Center
- All uses considered
- Neighboring tenants include:
Iconic Jewelry, UGG, Vans, Urban Outfitters, Zara, Ann Taylor, Brooks Brothers, Best Buy, NBA Store, Starbucks, Le Pain Quotidien, Paul Stuart, Sephora, H&M, & many more!



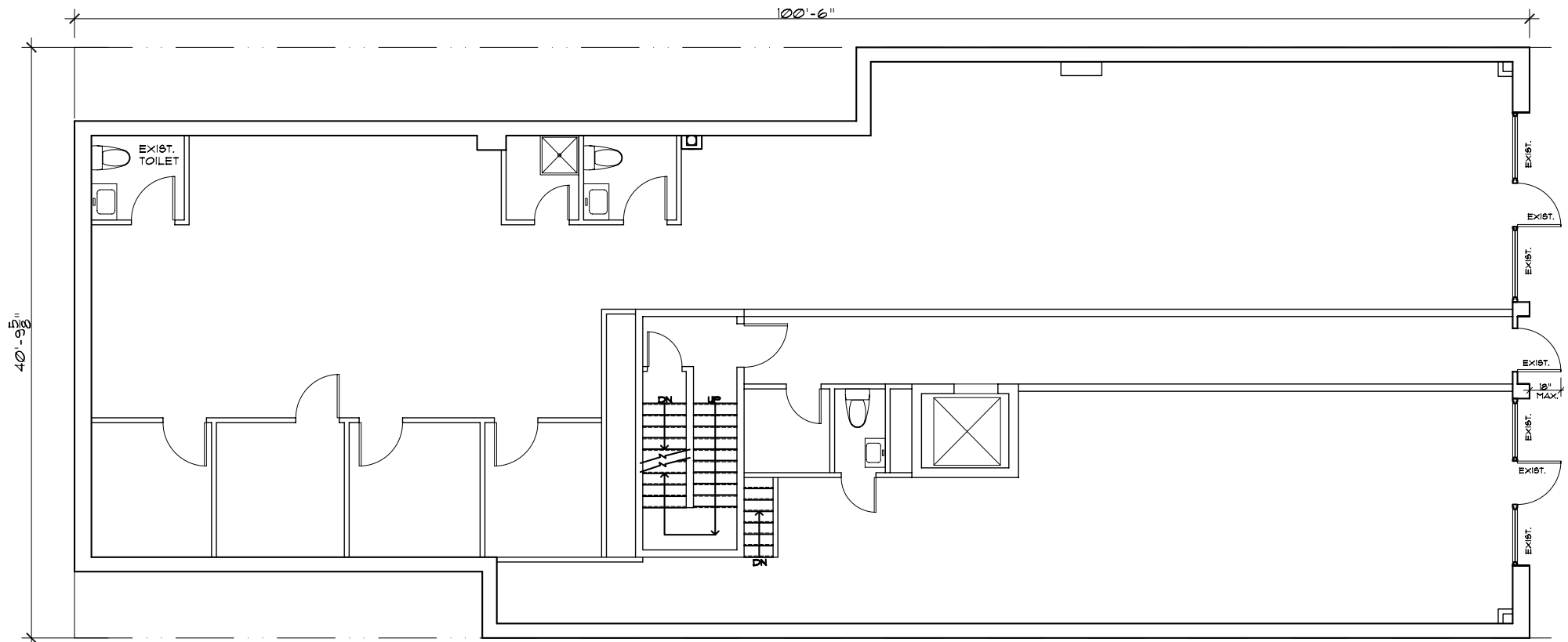
All information supplied in this marketing presentation and/or flyer is from sources deemed reliable and is furnished subject to errors, omissions, modifications, removal of listings from sale/lease and to any listing condition. Any square footage, dimensions, floor plans and/or technical data set forth are approximations and are subject to further elaboration/confirmation.



6 EAST 46TH STREET

BETWEEN 5TH & MADISON AVENUES | MIDTOWN

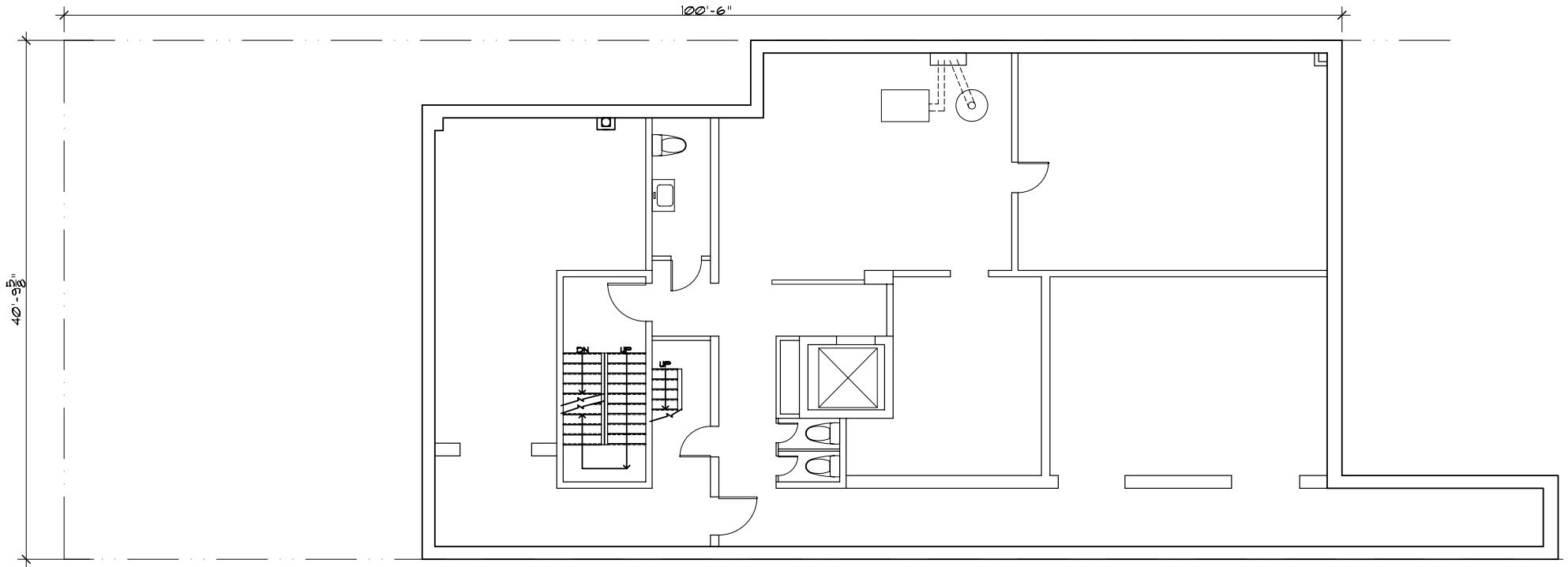
FLOOR PLANS:
GROUND FLOOR - 1,000 SF (APPROX.)



6 EAST 46TH STREET

BETWEEN 5TH & MADISON AVENUES | MIDTOWN

FLOOR PLANS:
BASEMENT - 800 SF





SGaines@ksrny.com

AManopla@ksrny.com

JackK@ksrny.com

1385 Broadway
New York, NY 10018
212.417.9217 | ksrny.com

