



Colliers

For Lease

Lew Manglos, CCIM
208 472 2841
lew.manglos@colliers.com

755 West Front Street, Suite 300
Boise, Idaho 83702
208 345 9000
colliers.com/idaho

Airport Business Center

2141 W. Airport Way
Boise, Idaho 83705

Highlights:

- Highly accessible location
- Near Boise Airport
- Abundant parking
- Open concept

This document has been prepared by Colliers for advertising and general information only. Colliers makes no guarantees, representations or warranties of any kind, expressed or implied, regarding the information including, but not limited to, warranties of content, accuracy and reliability. Any interested party should undertake their own inquiries as to the accuracy of the information. Colliers excludes unequivocally all inferred or implied terms, conditions and warranties arising out of this document and excludes all liability for loss and damages arising there from. This publication is the copyrighted property of Colliers and/or its licensor(s). © 2024. All rights reserved. This communication is not intended to cause or induce breach of an existing listing agreement. Colliers Treasure Valley, LLC.

Accelerating success.

For Lease

Property Information

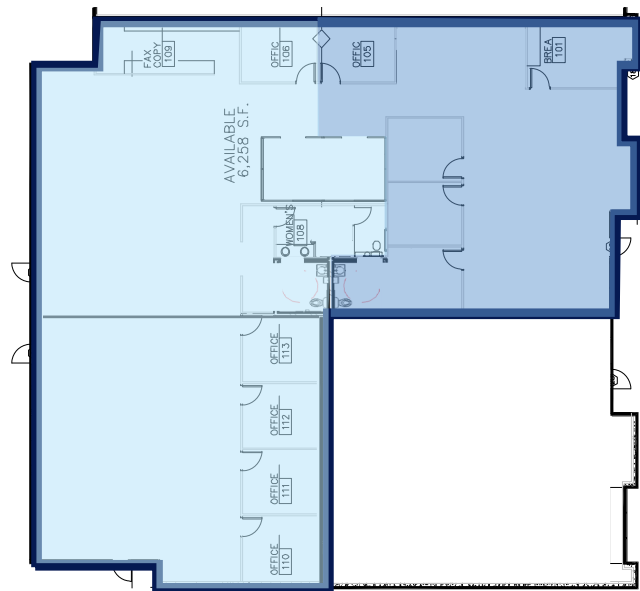
Property Type	Office
Building Size	22,002 SF
Lease Type	NNN
Lease Rate	\$14/SF
Parking	5 Spaces/1,000
Access	Lockbox

Space Available

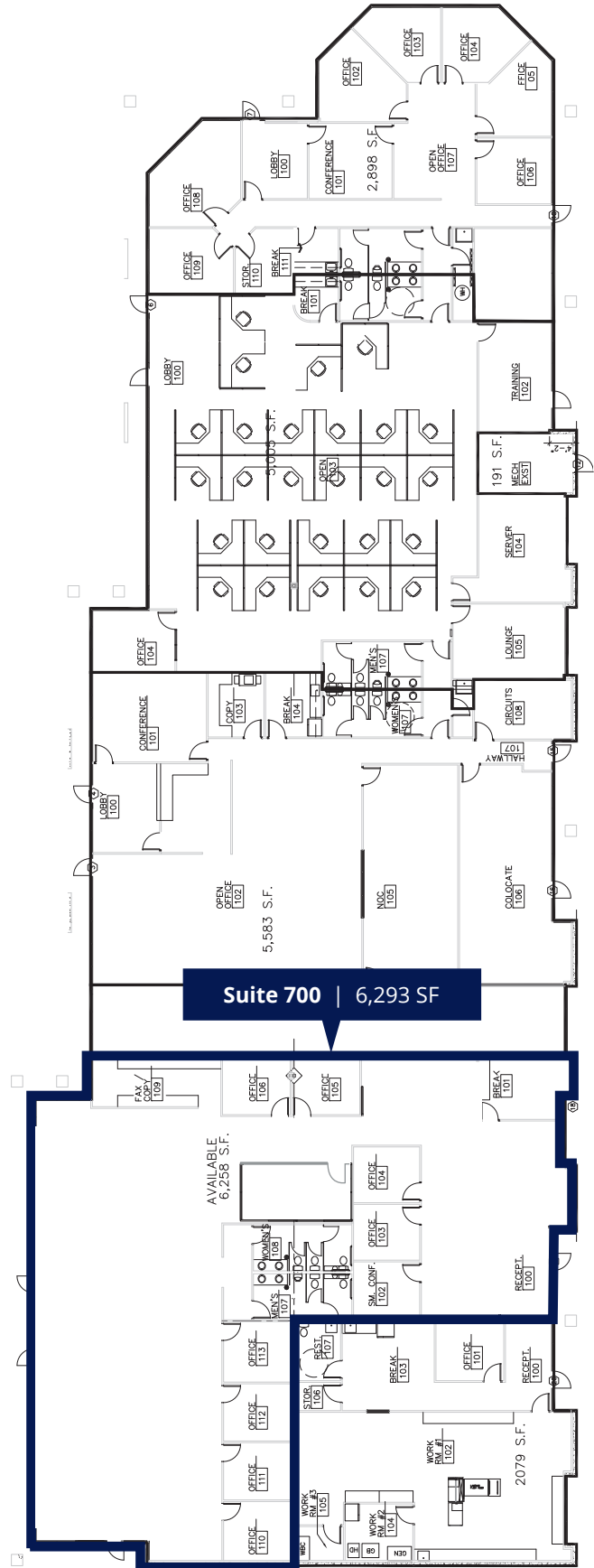
Suite	Size	Rate
700	6,293 RSF	\$14/SF
Est. NNN Expenses		\$9.16/SF

Conceptual Floor plan

Space could be demised in two suites of approximately 2,000 SF and 4,300 SF



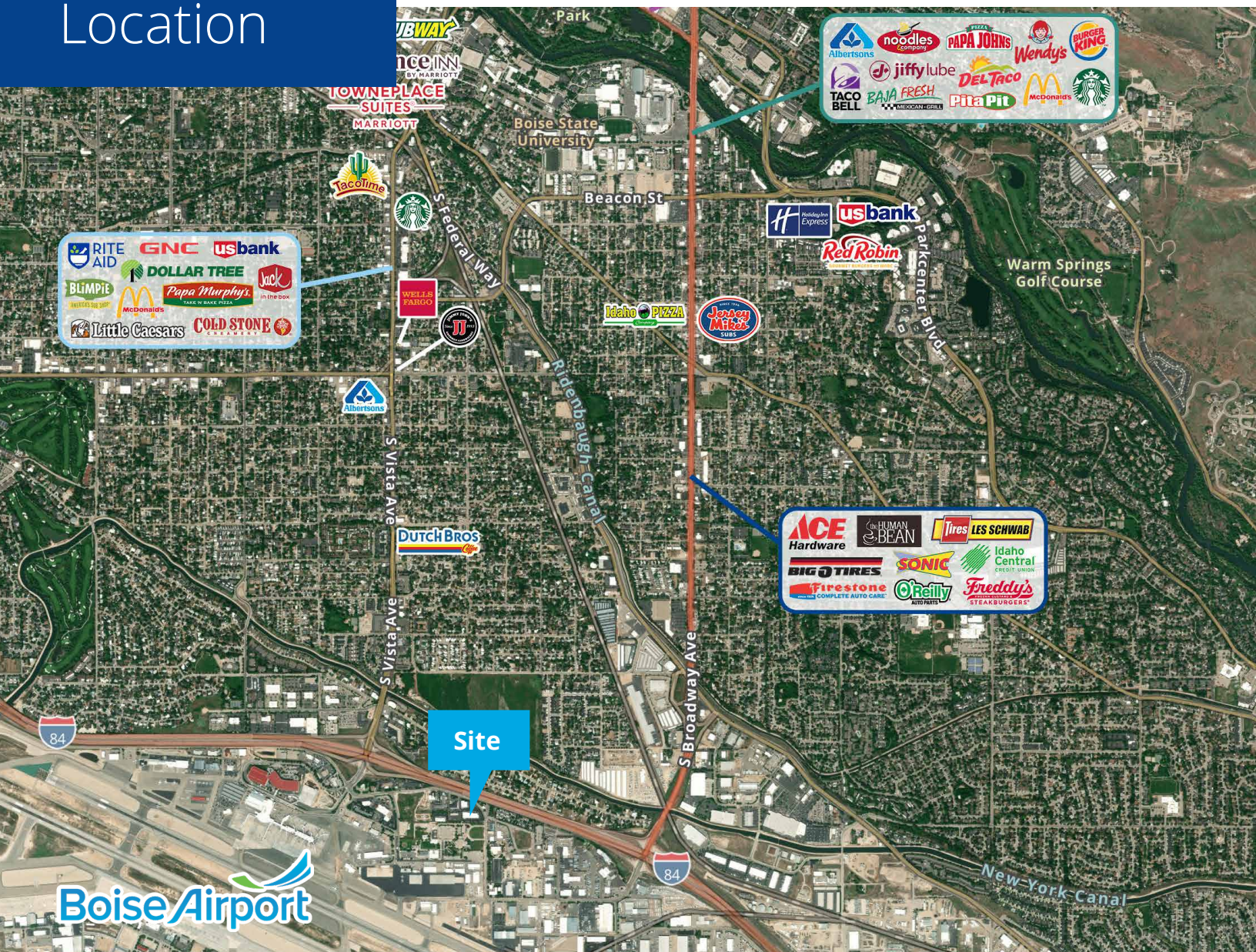
Floor plan



Location

 Google Map

 Street View



 Boise Airport



755 West Front Street, Suite 300
Boise, Idaho 83702
208 345 9000
colliers.com/idaho