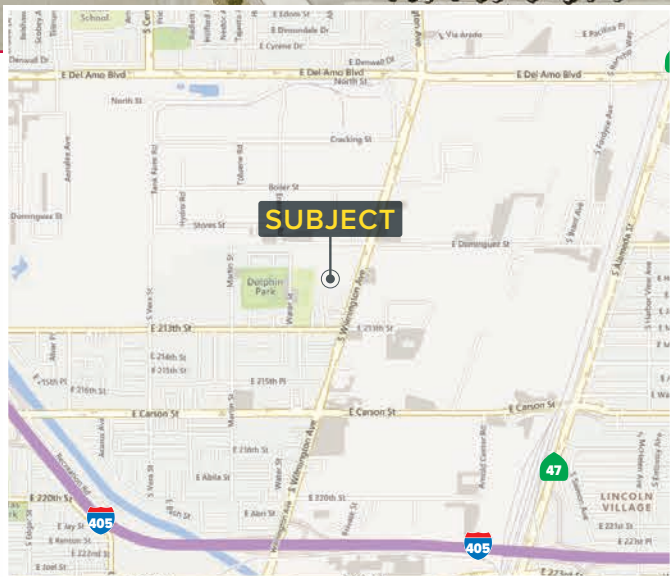
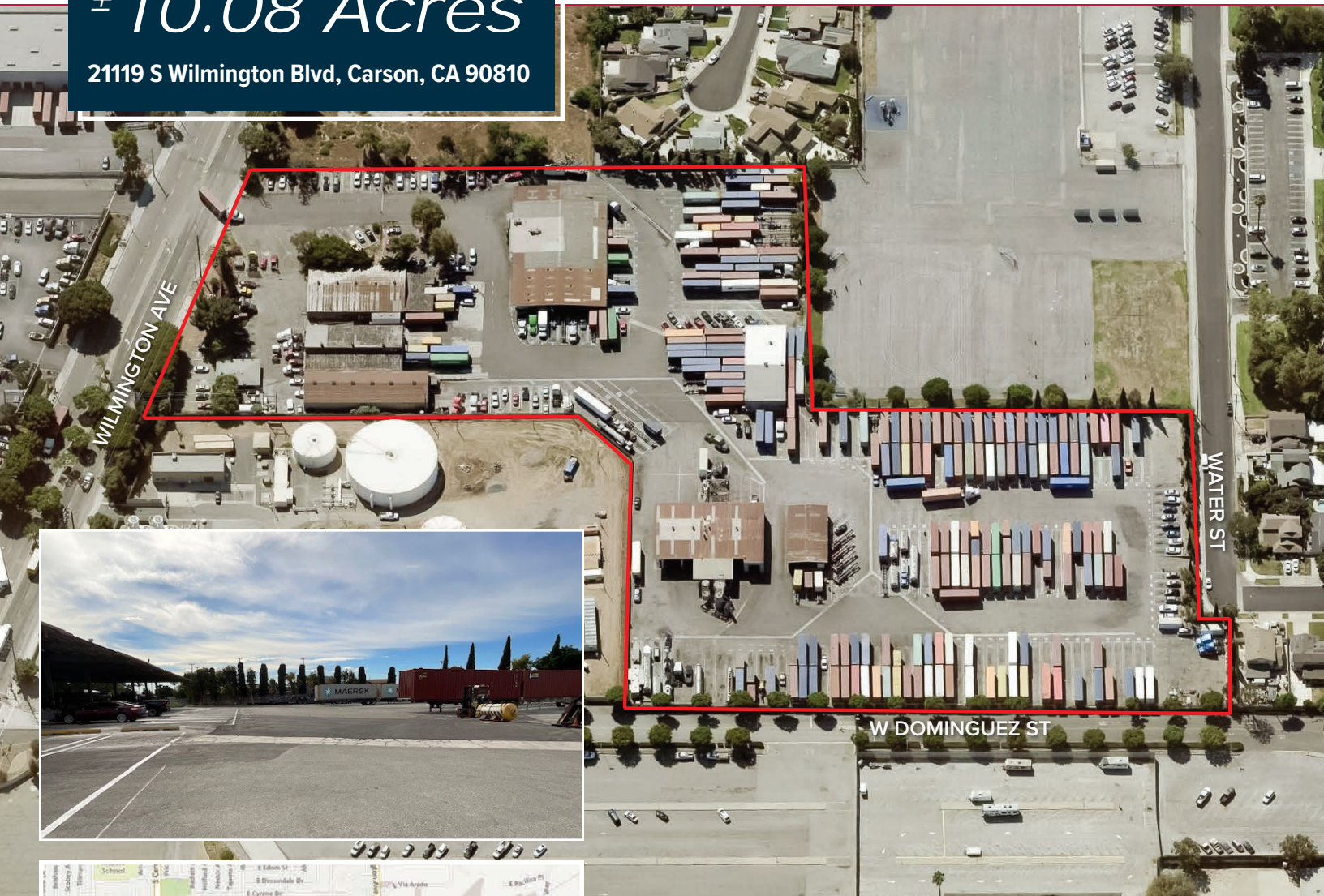


**LAND FOR LEASE**

**± 10.08 Acres**

**21119 S Wilmington Blvd, Carson, CA 90810**



### Property Highlights

- Asking Rate: \$0.70 PSF Gross
- ±439,211 Square Feet
- Container Parking Approved
- 24 Position Terminal / Dock on Site
- Less than 5 Miles from the Ports of LA/LB
- Multiple Functional Buildings on Site

FOR MORE INFORMATION, PLEASE CONTACT

**Remy Moses**  
Senior VP & Principal | LIC NO 01938772  
rmoses@lee-associates.com  
310.492.3557

**David Bales**  
Senior VP & Principal | LIC NO 01388502  
dbales@lee-associates.com  
310.279.6379

**Andy Gage**  
VP & Principal | LIC NO 02015991  
agage@lee-associates.com  
310.265.3773

**Jackson Balla**  
LIC NO 02026667  
jballa@lee-associates.com  
310.981.9758

LOCAL EXPERTISE. INTERNATIONAL REACH. WORLD CLASS.



**LAND FOR LEASE**

**± 10.08 Acres**

**21119 S Wilmington Blvd, Carson, CA 90810**

**Property Photos**



FOR MORE INFORMATION, PLEASE CONTACT

LOCAL EXPERTISE. INTERNATIONAL REACH. WORLD CLASS.

**Remy Moses**

Senior VP & Principal | LIC NO 01938772

[rmoses@lee-associates.com](mailto:rmoses@lee-associates.com)

310.492.3557

**David Bales**

Senior VP & Principal | LIC NO 01388502

[dbales@lee-associates.com](mailto:dbales@lee-associates.com)

310.279.6379

**Andy Gage**

VP & Principal | LIC NO 02015991

[agage@lee-associates.com](mailto:agage@lee-associates.com)

310.265.3773

**Jackson Balla**

LIC NO 02026667

[jballa@lee-associates.com](mailto:jballa@lee-associates.com)

310.981.9758

**LAND FOR LEASE**

**± 10.08 Acres**

**21119 S Wilmington Blvd, Carson, CA 90810**

**Property Photos**



FOR MORE INFORMATION, PLEASE CONTACT

LOCAL EXPERTISE. INTERNATIONAL REACH. WORLD CLASS.

**Remy Moses**

Senior VP & Principal | LIC NO 01938772

[rmoses@lee-associates.com](mailto:rmoses@lee-associates.com)  
310.492.3557

**David Bales**

Senior VP & Principal | LIC NO 01388502

[dbales@lee-associates.com](mailto:dbales@lee-associates.com)  
310.279.6379

**Andy Gage**

VP & Principal | LIC NO 02015991

[agage@lee-associates.com](mailto:agage@lee-associates.com)  
310.265.3773

**Jackson Balla**

LIC NO 02026667

[jballa@lee-associates.com](mailto:jballa@lee-associates.com)  
310.981.9758

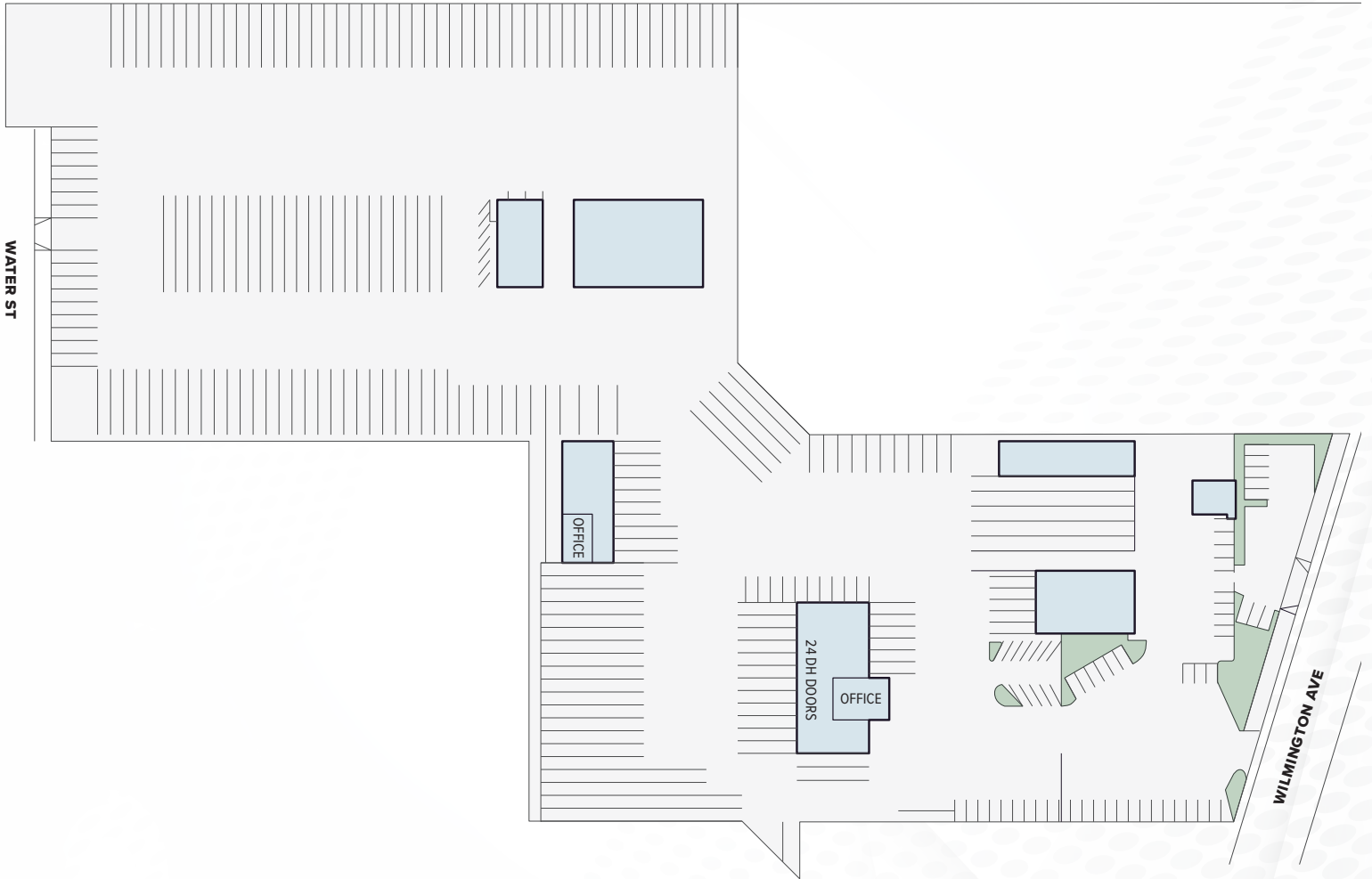


**LAND FOR LEASE**

**± 10.08 Acres**

21119 S Wilmington Blvd, Carson, CA 90810

**Property Site Plan**



**NOTE:** Drawing not to scale. All measurements and sizes are approximate.

FOR MORE INFORMATION, PLEASE CONTACT

LOCAL EXPERTISE. INTERNATIONAL REACH. WORLD CLASS.

**Remy Moses**

Senior VP & Principal | LIC NO 01938772

[rmoses@lee-associates.com](mailto:rmoses@lee-associates.com)

310.492.3557

**David Bales**

Senior VP & Principal | LIC NO 01388502

[dbales@lee-associates.com](mailto:dbales@lee-associates.com)

310.279.6379

**Andy Gage**

VP & Principal | LIC NO 02015991

[agage@lee-associates.com](mailto:agage@lee-associates.com)

310.265.3773

**Jackson Balla**

LIC NO 02026667

[jballa@lee-associates.com](mailto:jballa@lee-associates.com)

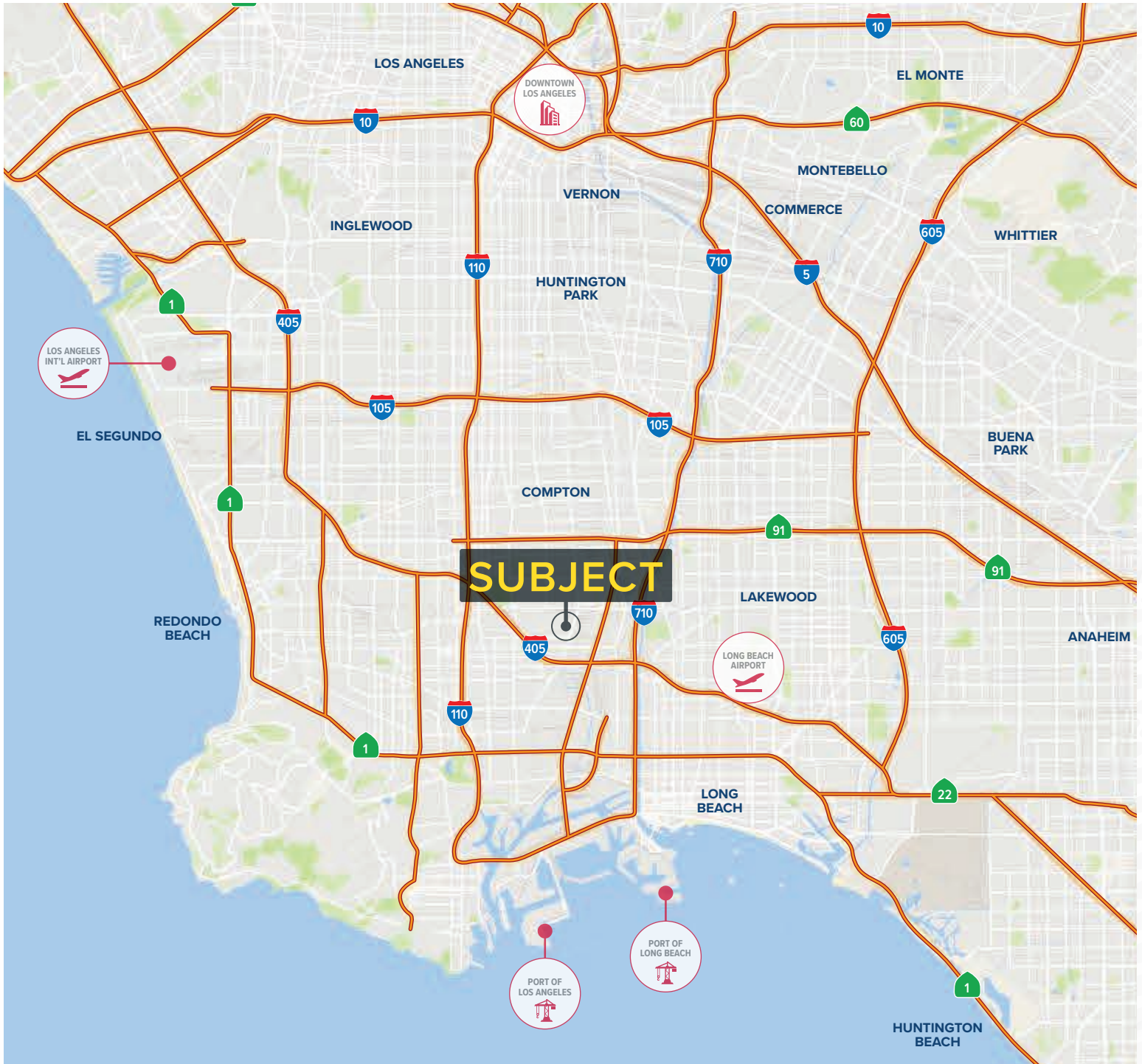
310.981.9758

# LAND FOR LEASE

## ± 10.08 Acres

21119 S Wilmington Blvd, Carson, CA 90810

### Regional Map



FOR MORE INFORMATION, PLEASE CONTACT

LOCAL EXPERTISE. INTERNATIONAL REACH. WORLD CLASS.

#### Remy Moses

Senior VP & Principal | LIC NO 01938772

rmoses@lee-associates.com  
310.492.3557

#### David Bales

Senior VP & Principal | LIC NO 01388502

dbales@lee-associates.com  
310.279.6379

#### Andy Gage

VP & Principal | LIC NO 02015991

agage@lee-associates.com  
310.265.3773

#### Jackson Balla

LIC NO 02026667

jballa@lee-associates.com  
310.981.9758