

Restaurant/Commercial

Leasing Opportunity



Habersham and Plant Street — *Savannah, GA*

PROPERTY OVERVIEW



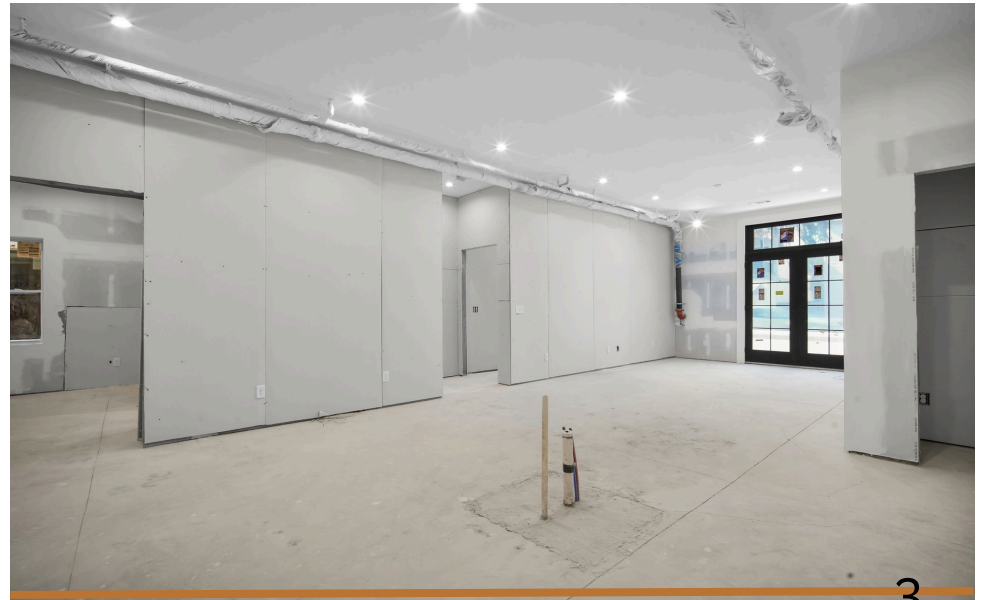
Presenting a prime opportunity in the heart of the vibrant Starland District, this mixed-use development offers the perfect blend of commercial and residential spaces. This thoughtfully designed property features:

- Commercial units for retailers, offices, or eateries, these versatile commercial spaces cater to a range of business needs, offering high foot traffic, modern amenities, and excellent visibility in one of the most sought-after districts.
- The upper floors consist of 10 well-appointed residential units, offering modern living with a blend of comfort and convenience. These stylish residences are designed to suit a variety of lifestyles, featuring open-concept layouts, premium finishes, and ample natural light.
- Situated in the trendy Starland District, residents and businesses will enjoy easy access to local amenities, restaurants, public transportation, and entertainment options, ensuring a dynamic and thriving community.

BUILDINGS A & B

Retail/Office

\$4,900 Monthly NNN



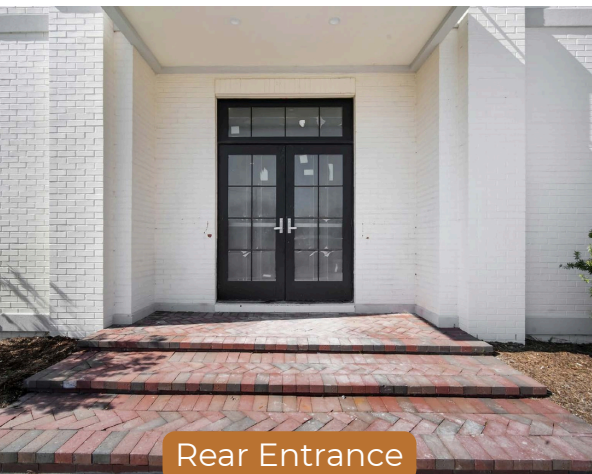
1,500-3,000 SF • Inviting courtyard area • frontage on Habersham Street • easy access to parking

BUILDINGS A&B

Common Areas/Exteriors



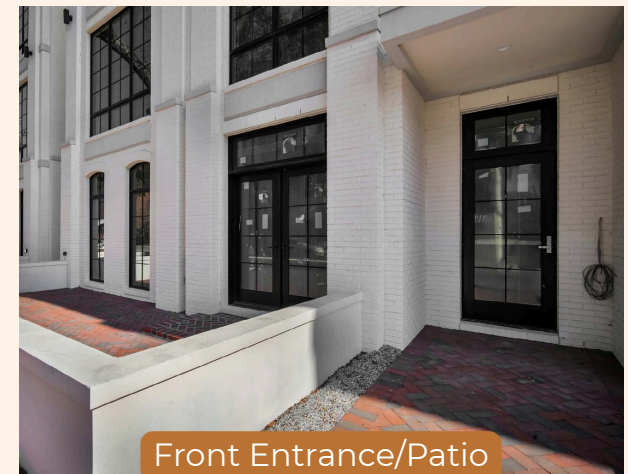
Rear Common Area Entrance



Rear Entrance



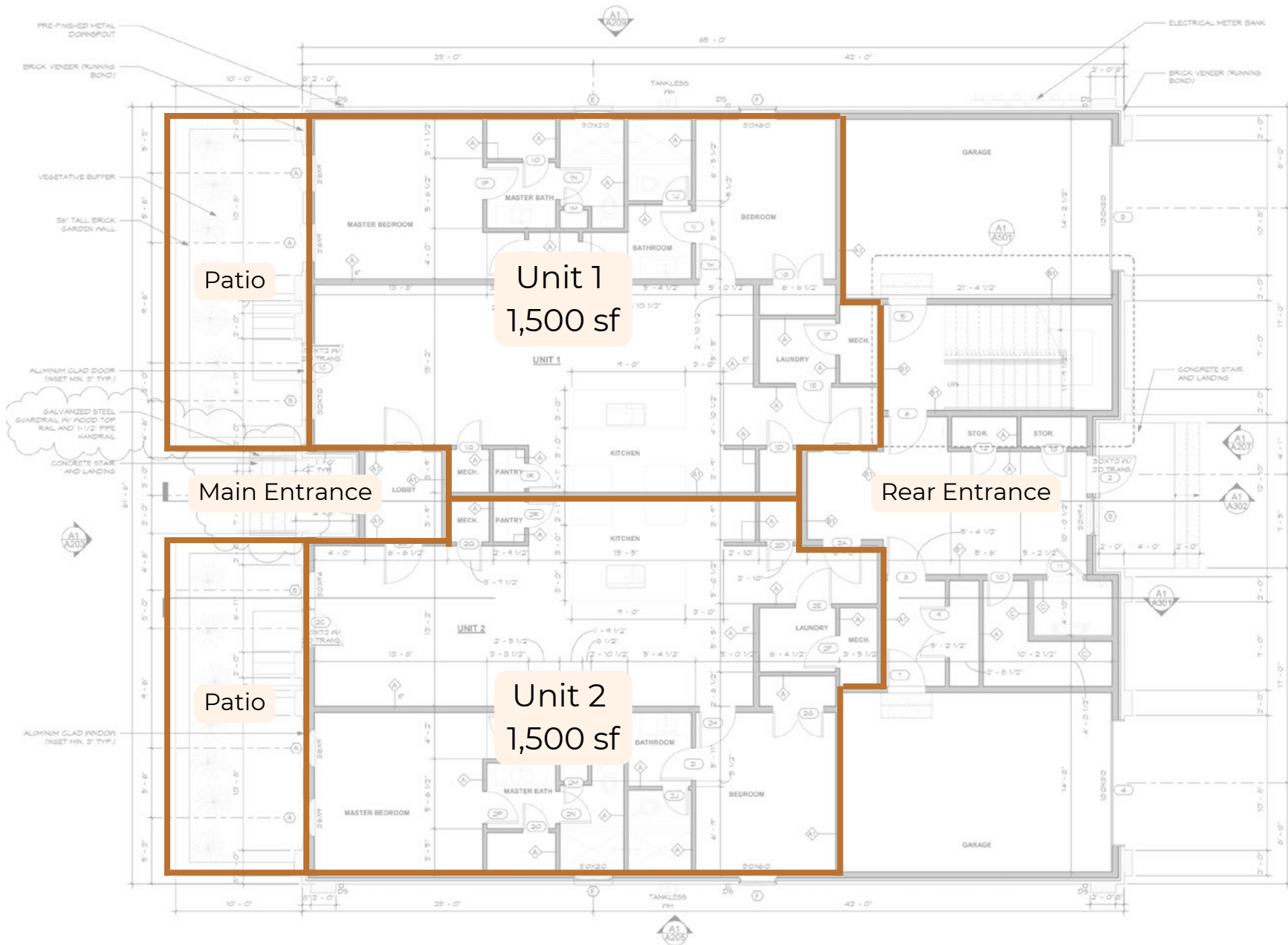
Front Common Area Entrance



Front Entrance/Patio

FLOOR PLANS/BUILDINGS A & B

Office/Retail



BUILDING C

Restaurant

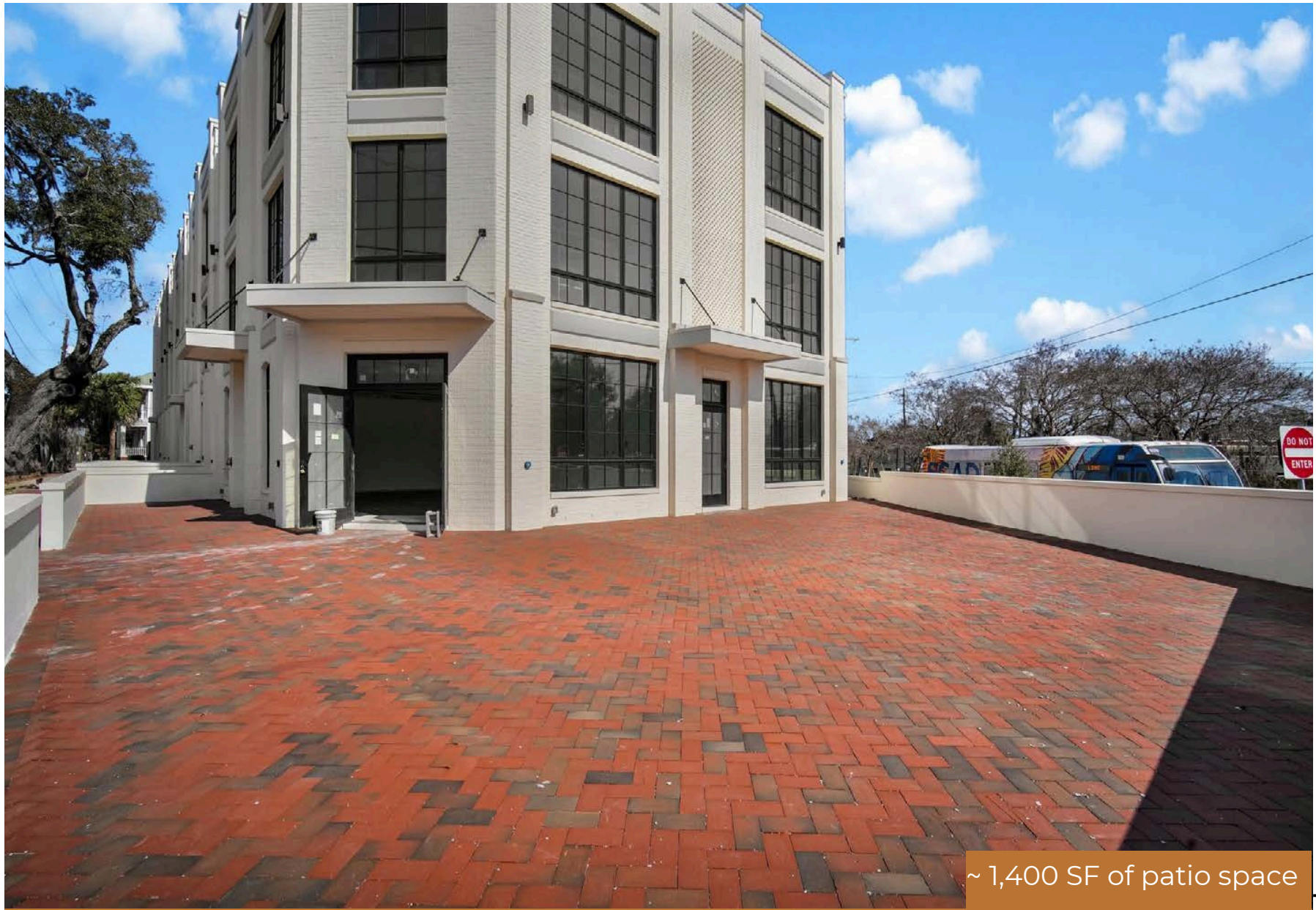
\$8,500 Monthly NNN



- 1,334 SF restaurant space
- Additional 1,400 SF of patio space
- Frontage on the corner of Habersham and 37th Street - high traffic area
- Currently a vanilla shell - blank slate for a variety of concepts

BUILDING C

Restaurant



~ 1,400 SF of patio space



Starland District
~2 minute walk

Downtown Savannah
~10 minute walk

SUBJECT PROPERTY

Habersham Street

Plant Street

37th Street

SURROUNDING ATTRACTIONS

SURROUNDING ATTRACTIONS



Common Thread



Late Air



The Vault Kitchen and Market





912.236.1000 | info@judgerealty.com | judgerealty.com



Lori Judge
CEO
cell: 912-484-1514
lori@judgerealty.com



Mandy Henderson
Sales Associate
cell: 970-778-5616
mandy@judgerealty.com