



VALUE INDUSTRIAL PARTNERS, LLC

Industrial Real Estate Investment, Brokerage and Management

477 W. Wrightwood Avenue, Elmhurst, Illinois 60126 TEL: 630-333-1900 FAX: 630-333-1910



**245 W. Roosevelt Road, Building 15, Unit 112
West Chicago, Illinois**

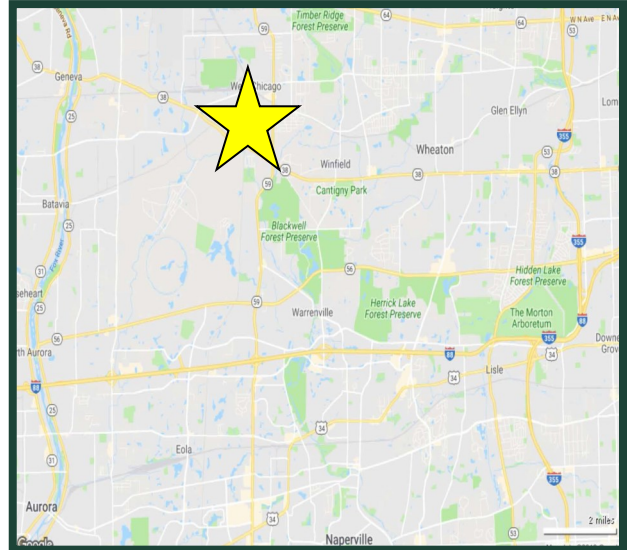
**FOR LEASE
813 SF**

Building Specifications

Available Size:	813 Square Feet
Building Size:	31,664 Square Feet
Office:	100%
Heat:	Gas
Real Estate Taxes:	Included with Current Stop
Operating Expenses:	Included with Current Stop

Comments

- Professionally owned and managed
- Access to I-88 and I-355 via Roosevelt Rd. & Rt. 59
- 2 private offices
- Comcast internet available



For Further Information, Please Contact:

Brian P. Gedvilas, Director of Leasing
bgedvilas@valueindustrialpartners.com

Jennifer L. Dobrowolski
jdobrowolski@valueindustrialpartners.com

TEL: 630-333-1900 FAX: 630-333-1910

Officers of the firm have an ownership interest in this property.
Submitted subject to error, change in status, or withdrawal without notice.

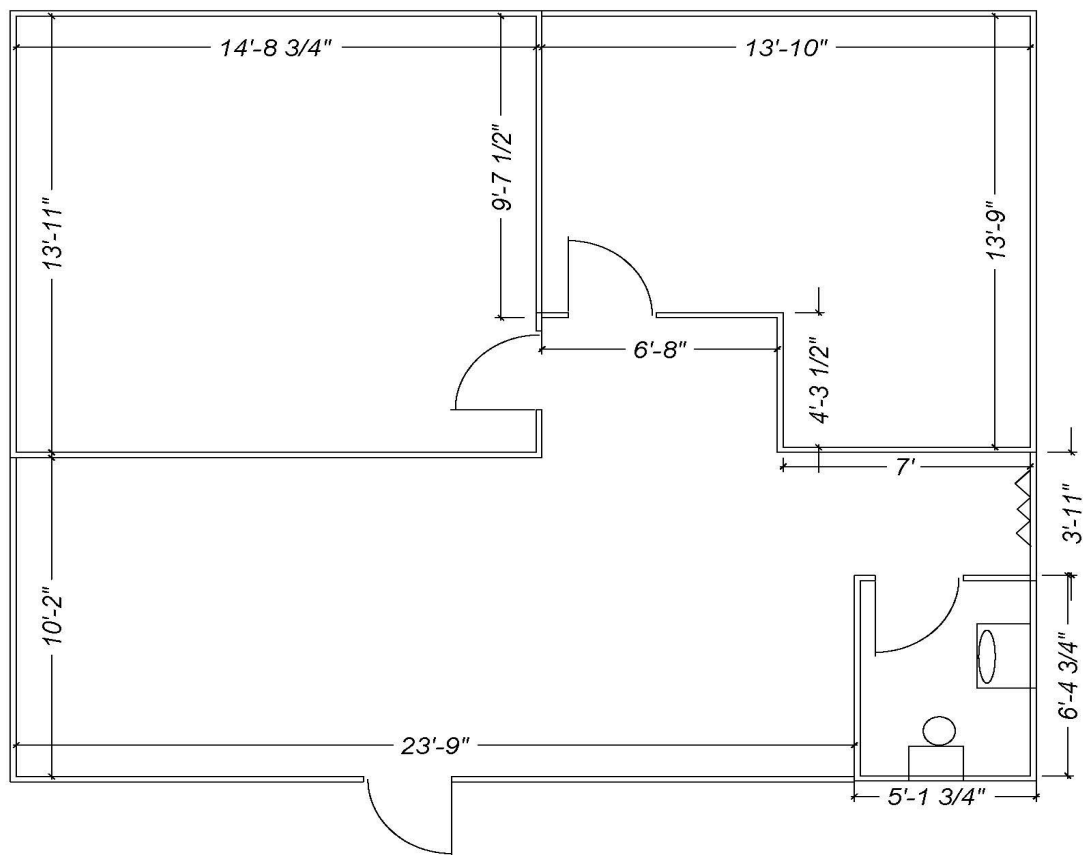


VALUE INDUSTRIAL PARTNERS, LLC

Industrial Real Estate Investment, Brokerage and Management

477 W. Wrightwood Avenue, Elmhurst, Illinois 60126 TEL: 630-333-1900 FAX: 630-333-1910

LAYOUT



FOR ILLUSTRATION PURPOSES ONLY. DIMENSIONS TO BE CONFIRMED.

Officers of the firm have an ownership interest in this property.
Submitted subject to error, change in status, or withdrawal without notice.