

# NEW KROGER MARKETPLACE DEVELOPMENT –MURFREESBORO, TN PRIME RETAIL PADS AVAILABLE



**PROPERTY DETAILS**

**Address** 2633 Memorial Blvd  
Murfreesboro, TN

**Estimated Completion Date** 2026

**Available Pads** 2 Pads available  
Outlot 1: 1.14 AC  
Outlot 2: 1.31 AC

**Asking Rent/Price** Call for more details

**Anchor** Kroger Marketplace

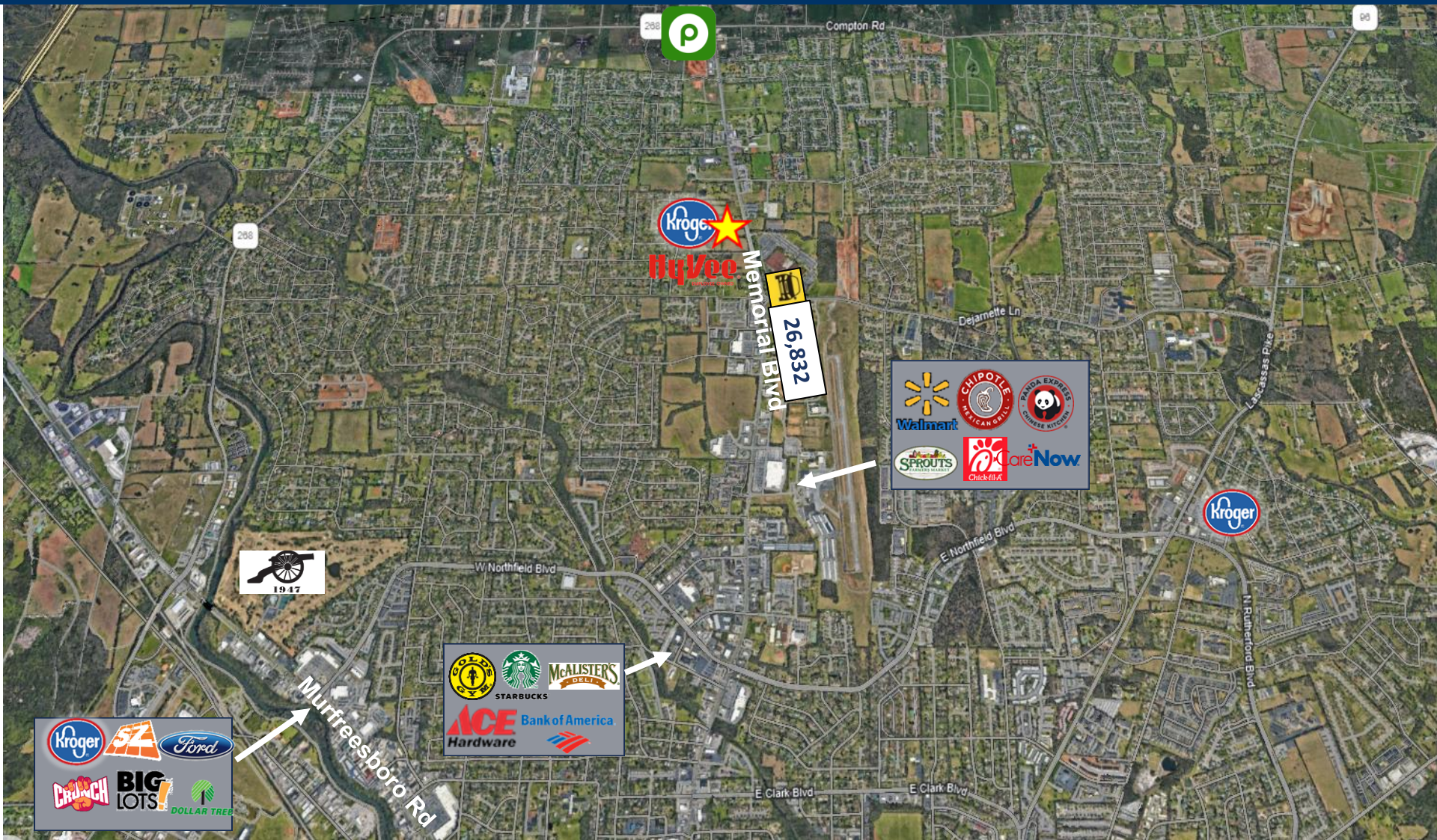
**Availability** Pad Sites Available & Retail Shop Space available for Lease.

**PROPERTY SUMMARY**

Brand new Kroger Marketplace in Murfreesboro, TN along Memorial Blvd., set to open in 2026. Kroger is relocating from their existing store on Memorial Blvd and this new center will have 2 outlots and 9,600 square feet of retail shops available for lease. Call for more details.

DEMOGRAPHICS	HHI	Population
3 miles	\$106,452	59,371
5 miles	\$97,075	107,095
10 miles	\$101,373	280,286





**Rhodes Seeger**

[rhodes.seeger@southeastern.company](mailto:rhodes.seeger@southeastern.company)

706.825.4457

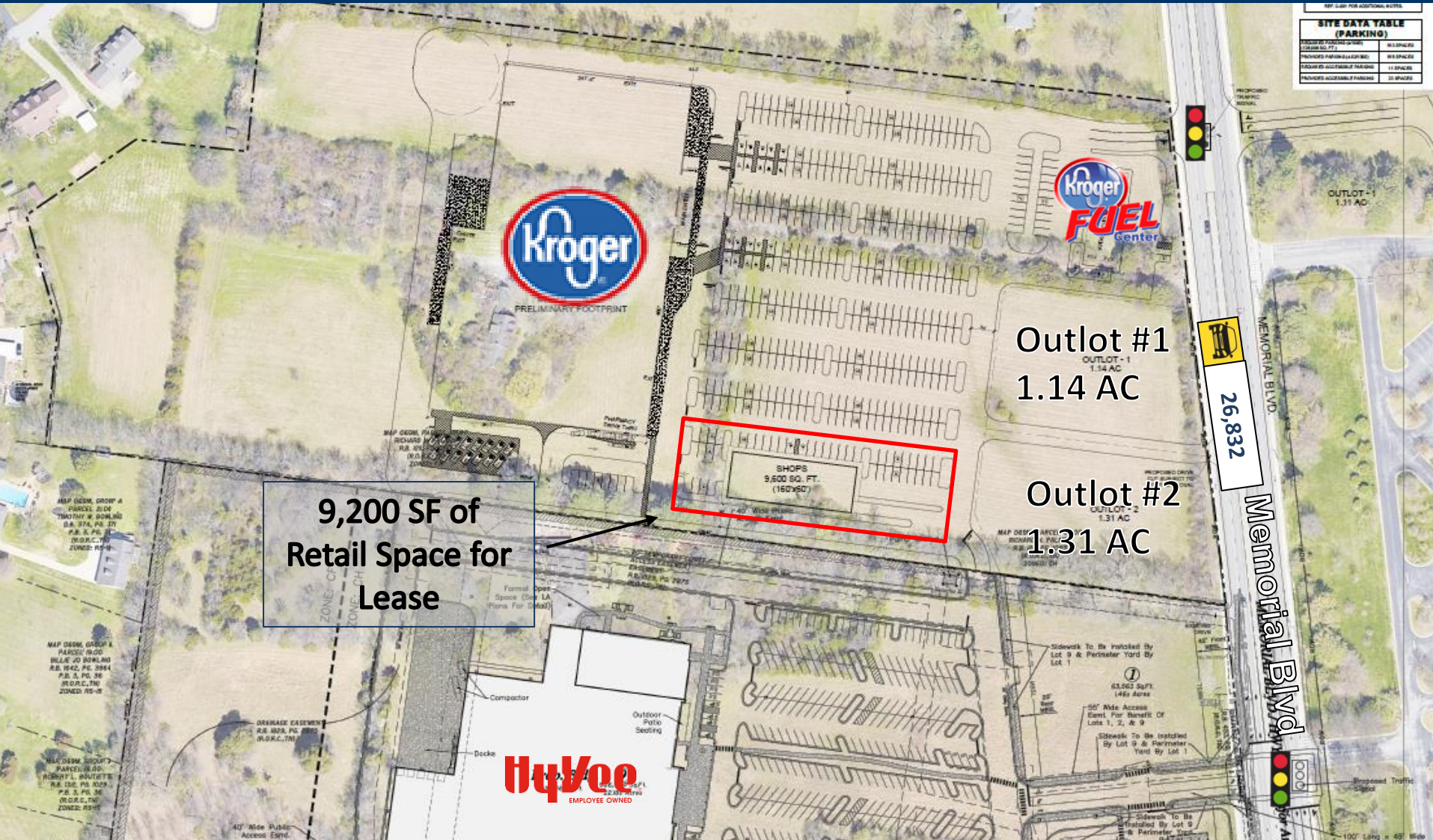
**Tyler Martin**

[tyler.martin@southeastern.company](mailto:tyler.martin@southeastern.company)

706.831.3717

**Murfreesboro, TN**  
**Memorial Blvd Kroger Marketplace**





**9,200 SF of  
Retail Space for  
Lease**

**SHOPS  
9,500 SQ. FT.  
(160x50)**

**Outlot #1  
1.14 AC**

**Outlot #2  
1.31 AC**

**HyVee**  
EMPLOYEE OWNED

**26,832**

**Memorial Blvd**

**Rhodes Seeger**

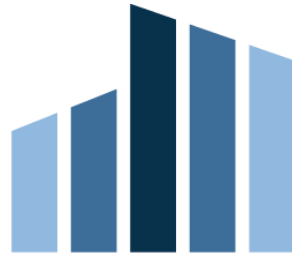
[rhodes.seeger@southeastern.company](mailto:rhodes.seeger@southeastern.company)

706.825.4457

**Tyler Martin**

[tyler.martin@southeastern.company](mailto:tyler.martin@southeastern.company)

706.831.3717



# SOUTHEASTERN

---

DEVELOPMENT • BROKERAGE • CONSULTING