

# FOR LEASE



1456 Professional Drive, Suite 405, Petaluma, CA 94954

**\$3,690/mo.**

## *For Lease - Medical Office*

Approximately 1,507 sq. ft. Medical office space available in desirable Park Place Medical Condominiums. Space has nice size waiting room, along with several treatment areas and private office.

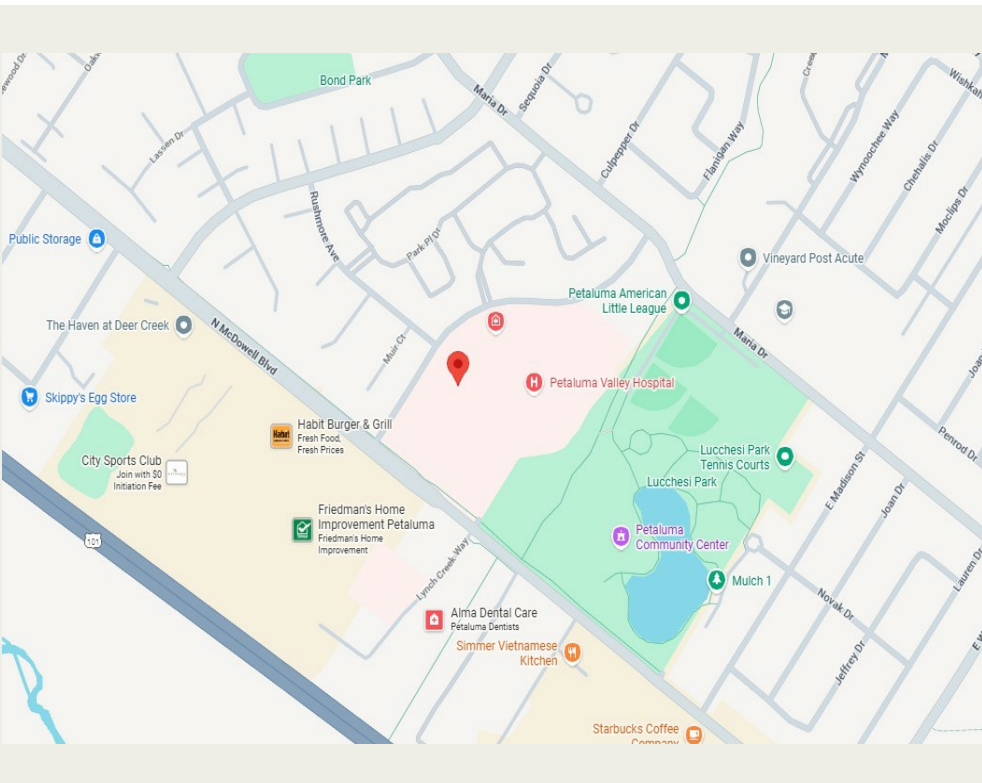
*3-5 Year Lease*

Price: Lease: Approximately \$2.45 per sq. ft. gross/\$3,690.00 per month

Term: 3-5 Years

Zoning: PUD (Medical/Office Uses)

Comments: Available Now



**Bryant Moynihan**  
**Nexus Realty Group, Inc.**  
Broker License B314676

**707.484.2566 direct**  
**707.769.5280 office**

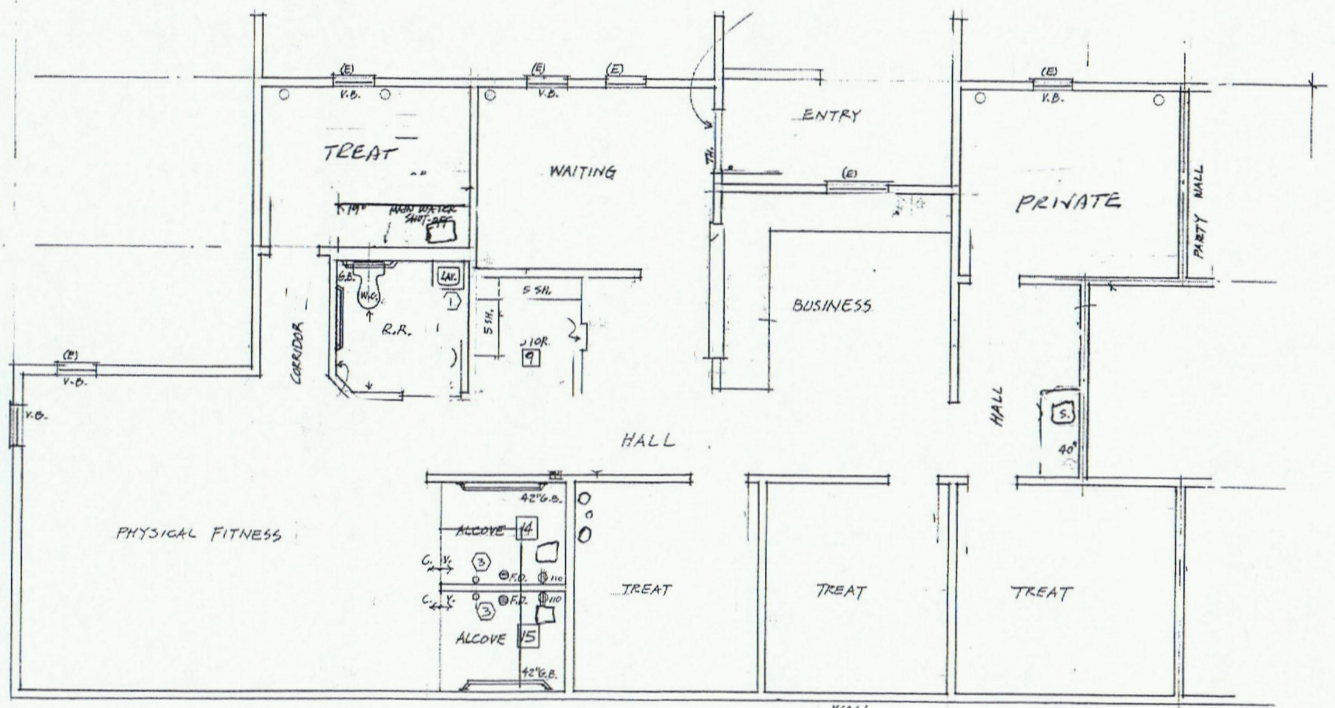
bryant@nexusrealty.com  
office@nexusrealty.com



P.O. Box 2210 Petaluma, CA 94953

# Floor Plan

1456 Professional Drive, Suite 405, Petaluma, CA 94954



1456 Professional Ste. 405

FLOOR PLAN

1,507 SQ. FT.

SCALE : 1/4" = 1'-0"