

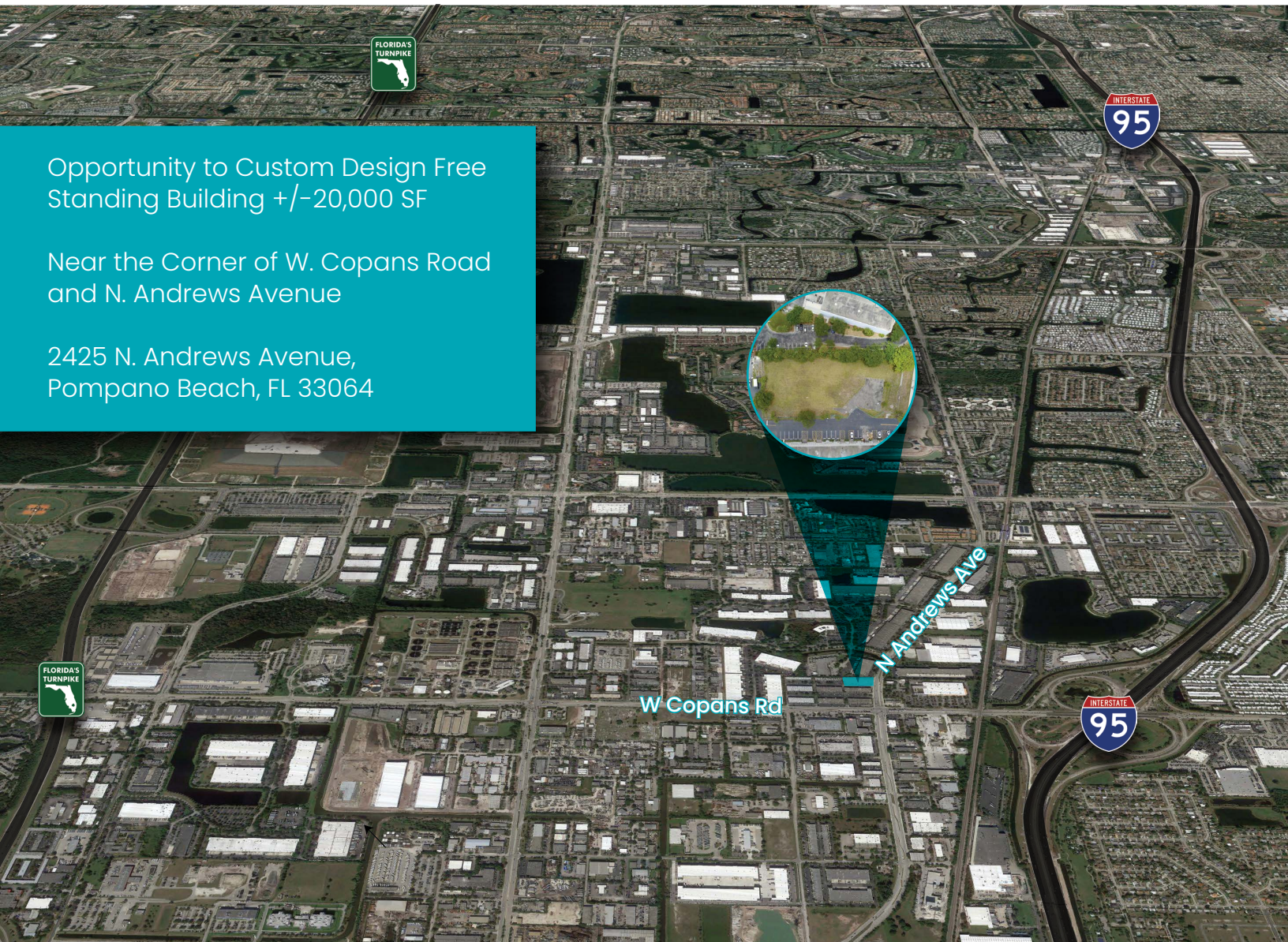
LAND LEASE OR
BUILT TO SUIT

INDUSTRIAL OFFICE
WAREHOUSE

Opportunity to Custom Design Free
Standing Building +/-20,000 SF

Near the Corner of W. Copans Road
and N. Andrews Avenue

2425 N. Andrews Avenue,
Pompano Beach, FL 33064

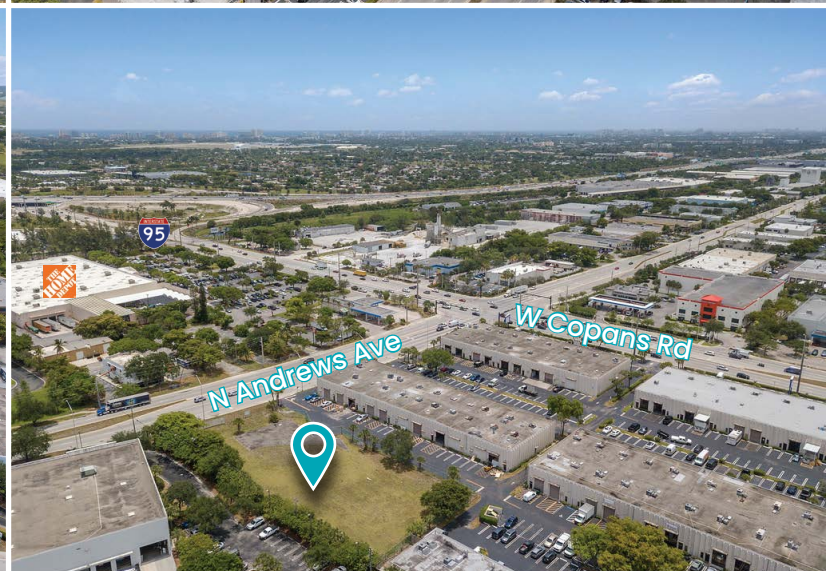
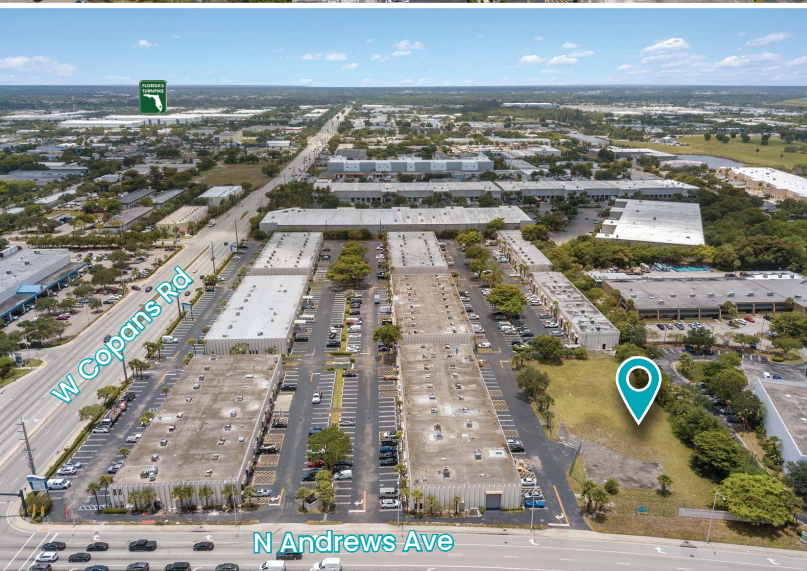
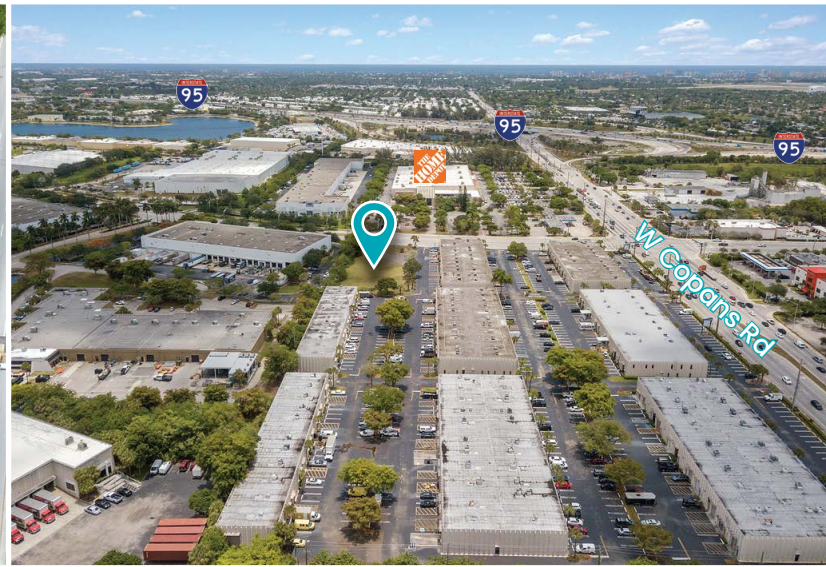
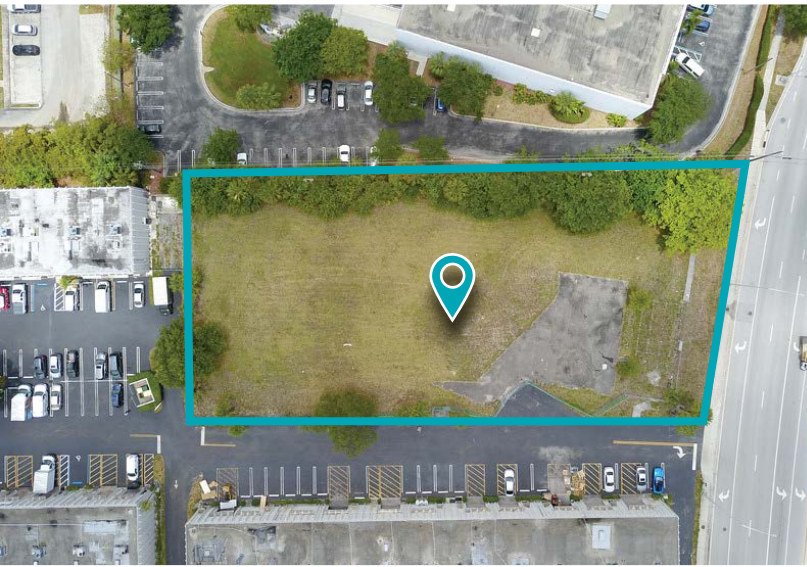


PROPERTY HIGHLIGHTS

- One block west of I-95
- Located between I-95 and Turnpike
- Visible Signage
- Industrial B - 4 Zoning Pompano Beach
- Centrally Located in the Tri-Countries of Broward, Miami-Dade and Palm Beach
- Easy Access to Serve North and South Florida

LAND LEASE OR
BUILT TO SUIT

INDUSTRIAL OFFICE
WAREHOUSE



SAVITAR
SAVITAR PROPERTIES, INC.

For more information contact: Cynthia Herskovich, Licensed Real Estate Broker
Office: 954.979.6730
Cell: 561.537.0720