



INDUSTRIAL BUILDING
16,000 SF | 3 ACRES

www.LakeshoreCommercial.com
44 East 8th Street, Suite 510 | Holland, MI 49423 | 616.394.4500

TOM POSTMA
• DIR +1 616 355 3145
• MOB +1 616 283 2411
• TOM@LAKESHORECOMMERCIAL.COM

LISTING INFORMATION

Sale Price	\$1,760,000
Total SF	16,000 SF
Acreage	3 Acres
Price per SF	\$110/SF
Property Type	Industrial
Term	Cash/Conventional
Taxing Authority	City of Holland
County	Allegan
APN	03-02-03-200-007
(2025) SEV	\$503,200
(2025) Taxable Value	\$346,941
(2025) RE Taxes	\$21,705
Ceiling Height	17 - 20'
Number of Floors	1
Year Built	1998
Number of Buildings	1
Zoning	I - Industrial

BUILDING HIGHLIGHTS

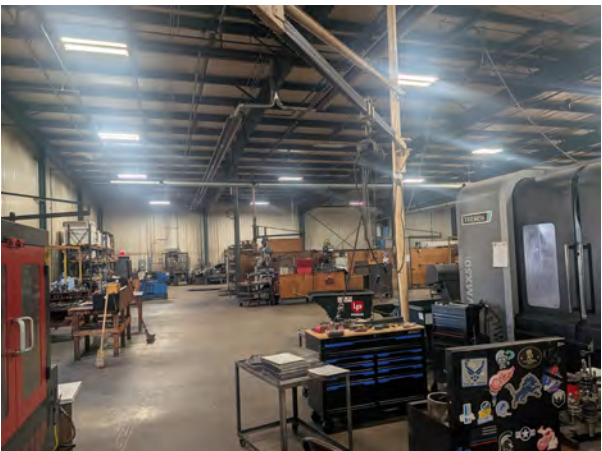
- Ample space for growth/expansion
- Heavy power capacity, suitable for industrial operations
- Functional interior layout with nice office space and mezzanine
- Located in an established industrial park with complementary manufacturing neighbors
- 1,640 SF Office space

This 16,000 SF industrial property is situated on 3 acres, located in an established industrial park on Holland's south side. This property comes equipped with heavy power capacity, suitable for industrial operations, functional interior layout with office space and a mezzanine. This property has ample space for growth or expansion for all your business needs.

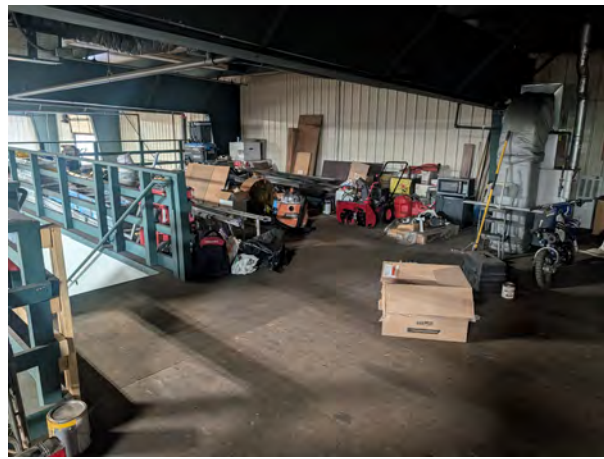
FOR SALE · 821 Productions Place · Holland, MI 49423



LISTING INFORMATION



LISTING INFORMATION



BLUEPRINTS

(3) 12' x 12'
OH Doors

160'

*Wall/clear height: 20'/18'

14' x 14'
OH Doors

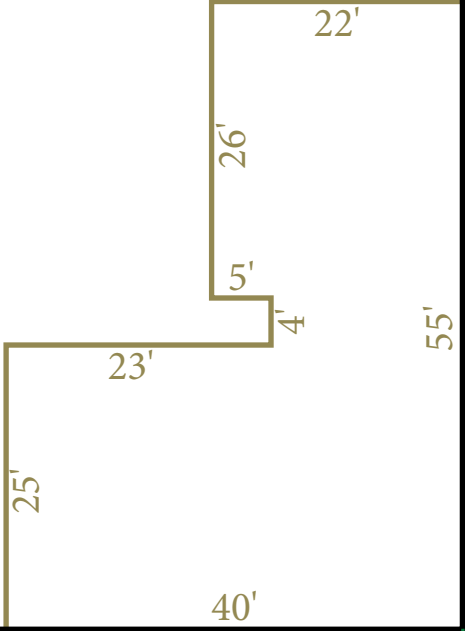
100'

*Wall/clear height: 20'/18'

1st Steel/0
16,000 SF

Clear height: 23.5'/21'

Mezzanine Storage
1,640 SF
Office Area
1,640 SF



Block Veneer
1,336 SF

50'

Canopy
200 SF

PARCEL MAP



AERIAL MAP



YOUR PREMIER BROKER IN WEST MICHIGAN



TOM POSTMA
PRINCIPAL

DIRECT (+1) 616-355-3145
CELL (+1) 616-283-2411
TOM@LAKESHORECOMMERCIAL.COM



CALEB DRIESENKA
ADVISOR

DIRECT (+1) 616-355-3149
CELL (+1) 616-283-8205
CALEB@LAKESHORECOMMERCIAL.COM



DREW DURHAM
PRINCIPAL

DIRECT (+1) 616-355-3148
CELL (+1) 616-566-2039
DREW@LAKESHORECOMMERCIAL.COM



JASON DEWITT
PRINCIPAL

DIRECT (+1) 616-355-3156
CELL (+1) 616-836-2856
JASON@LAKESHORECOMMERCIAL.COM



JIM EDEWAARD, CCIM
ADVISOR

DIRECT (+1) 616-355-3144
CELL (+1) 616-403-6131
JIM@LAKESHORECOMMERCIAL.COM



KRIS DEPREE
PRINCIPAL

DIRECT (+1) 616-355-3141
CELL (+1) 616-212-5576
KRIS@LAKESHORECOMMERCIAL.COM



MIKE NAGELKIRK
ADVISOR

DIRECT (+1) 616-355-3151
CELL (+1) 616-836-1122
MIKE@LAKESHORECOMMERCIAL.COM

Lakeshore Commercial Real Estate has over 100 years of experience in the industry. We have seen many changes and evolutions over the years, but our focus has always remained the same: to serve businesses in our community and help them achieve their success. We specialize in all aspects of commercial real estate, including sales, management, and leasing. We have a deep understanding of the local market and the unique needs of different businesses. We use our expertise to help our clients find the right property, negotiate the best deals, and manage their properties efficiently and effectively. We don't just have you covered on the Lakeshore. We have created excellent relationships with brokers outside of the Lakeshore area to ensure we are serving you best. We are committed to our clients and their success. We work closely with each client to understand their needs and goals, and we develop customized solutions to help them achieve those goals.