

FOR LEASE

CARWOOD CENTER

4132-4226 WOODRUFF AVE LAKEWOOD, CA 90713

CORELAND
COMPANIES



Restaurant & Retail Spaces (1,251 - 2,502 SF) For Lease

PROPERTY DESCRIPTION

Restaurant & Retail spaces available at 106,721 SF Vons anchored shopping center. Excellent location among neighboring communities of Lakewood and Long Beach, and adjacent from complimentary retailers including Sprouts, Marshalls and Home Goods. Ideal for local services and medical uses.

PROPERTY HIGHLIGHTS

- Join Vons, Chronic Tacos, Wingstop, Subway, Salon Centric, SuperCuts, Waba Grill and more
- Close proximity to the 605 Freeway and the 405 Freeway
- Pylon Signage available

SPACES

| SPACES | SPACE SIZE |
|---------------------------------|------------|
| Suite 4164 | 1,797 SF |
| Suite 4170 | 1,776 SF |
| Suite 4214 (former coffee shop) | 1,430 SF |
| Suite 4192 (Divisible) | 2,502 SF |

DEMOGRAPHICS

| | 1 MILE | 3 MILES | 5 MILES |
|-------------------|-----------|-----------|-----------|
| Total Households | 8,594 | 62,060 | 224,307 |
| Total Population | 24,222 | 184,411 | 648,174 |
| Average HH Income | \$159,206 | \$138,152 | \$122,003 |

MATT HAMMOND

714.210.6711
mhammond@coreland.com
LIC #01235239

CHRIS PREMAC

714.210.6705
cpremac@coreland.com
LIC #01966099

The information contained herein has been obtained from sources we deem reliable, however no warranty or representation is made to the accuracy of the information. Terms of lease or availability are subject to change or withdrawal without notice.

FOR LEASE

CARWOOD CENTER

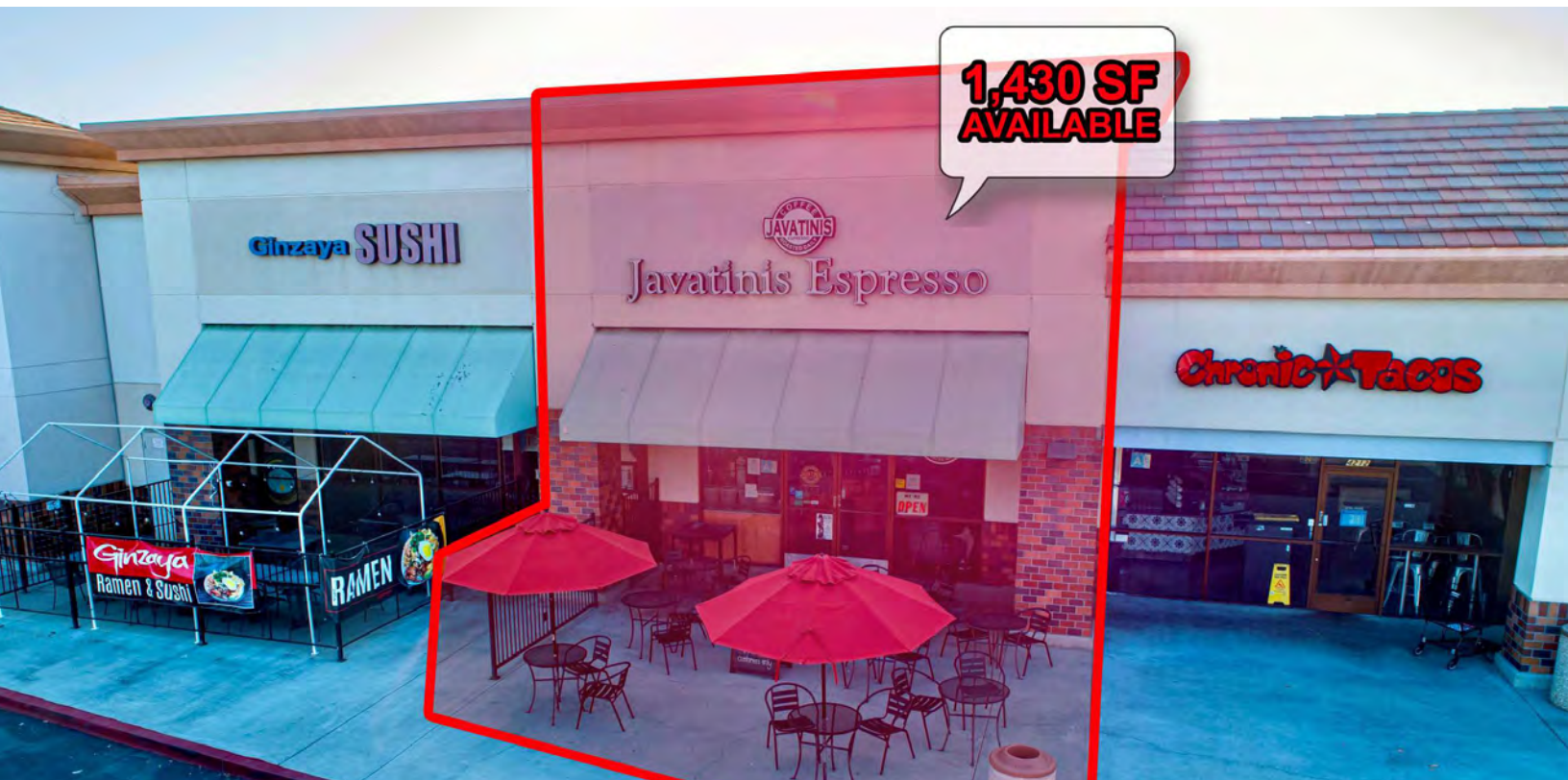
4132-4226 WOODRUFF AVE LAKEWOOD, CA 90713



FOR LEASE

CARWOOD CENTER

4132-4226 WOODRUFF AVE LAKEWOOD, CA 90713



CORELAND
COMPANIES

MATT HAMMOND

714.210.6711
mhammond@coreland.com
LIC #01235239

CHRIS PREMAC

714.210.6705
cpremac@coreland.com
LIC #01966099

