



1439 W. 2nd AVENUE - EUGENE, OREGON 97402

FOR LEASE: WHITEAKER INDUSTRIAL BUILDING

- BUILDING SIZE: 10,752 SQUARE FEET
 - 2,100 SF (APPROX.) OFFICE SPACE ON 1ST FLOOR
 - 1,500 SF (APPROX.) OFFICE SPACE ON 2ND FLOOR (NOT INCLUDED IN BUILDING SIZE)
- LOCATED IN THE WHITEAKER NEIGHBORHOOD

Lease Rate: \$6,750/MONTH, NNN



www.campbellre.com

For more information contact:

BILL NEWLAND
bill@campbellre.com
(541) 484-2214

Licensed in the State of Oregon

PAUL REDHEAD
paulr@campbellre.com
(541) 484-2214

Licensed in the State of Oregon

PROPERTY OVERVIEW

1439 W. 2nd Avenue is a high-quality concrete tilt-up industrial building in Eugene's popular Whiteaker neighborhood. This building has high ceilings, ample 3-phase power and a large office buildout. 1439 W. 2nd Avenue also features rooftop solar panels.

LOT SIZE0.76 Acres

LOADING CAPABILITY1 Grade Level Doors

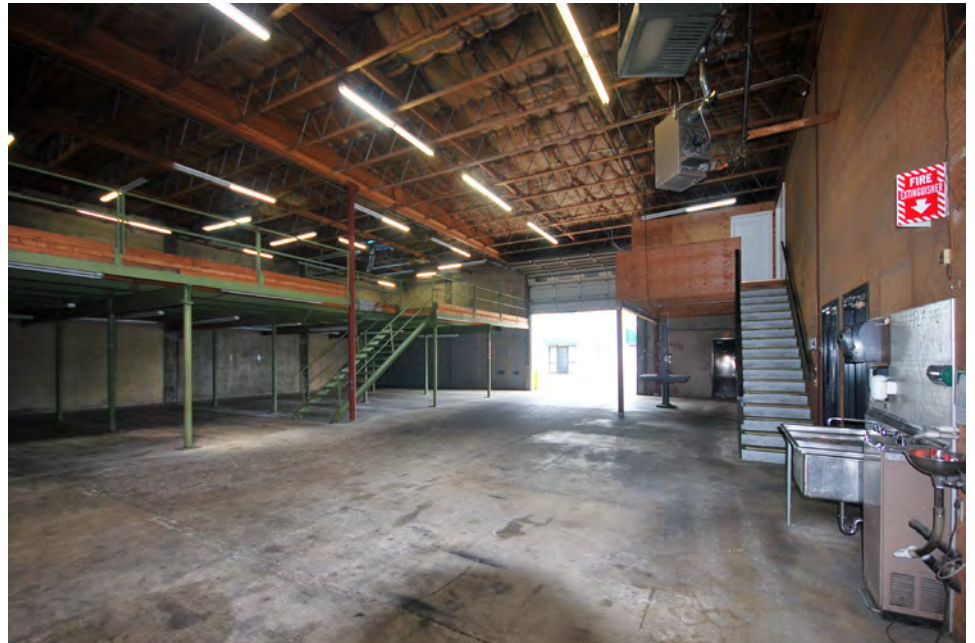
POWER3-Phase

CEILING HEIGHT20 Feet (approx)

ZONINGE-2 (Mixed Use Employment)



PHOTOS - 1439 W. 2nd Avenue



PHOTOS - 1439 W. 2nd Avenue





The information in this package was obtained from sources deemed reliable, and is not guaranteed by agent. Package is subject to change, error or omission, prior sale or lease, correction or withdrawal. Any party contemplating purchase is urged to conduct their own independent study and inspection.

PROPERTY LOCATION MAP

