

AVAILABLE FOR LEASE

Andrew Executive Center

THE PROPERTY

**Medical Office or
Professional Office
Space Available for Lease!**

LOCATION

**1060 Andrew Drive
West Chester, PA 19380**

OVERVIEW

Property Highlights

- Available Space: 3,000 - 29,341 SF
- Rental Rate: \$18.00/SF NNN
- High end finishes; move-in ready space
- Well qualified ownership and management
- Great signage opportunity on Phoenixville Pike management
- Close proximity to downtown West Chester Route 202, and Chester County Hospital
- Renovated building with upgraded HVAC, building lobby, and common areas
- Direct access into suite
- Will accommodate medical or professional office uses

FOR MORE INFORMATION

Kevin Hagenberg, Partner
e: khagenberg@sshco.com
d: 610-601-4203

Don Grimes, Managing Director
e: dgrimes@sshco.com
d: 610-601-4204

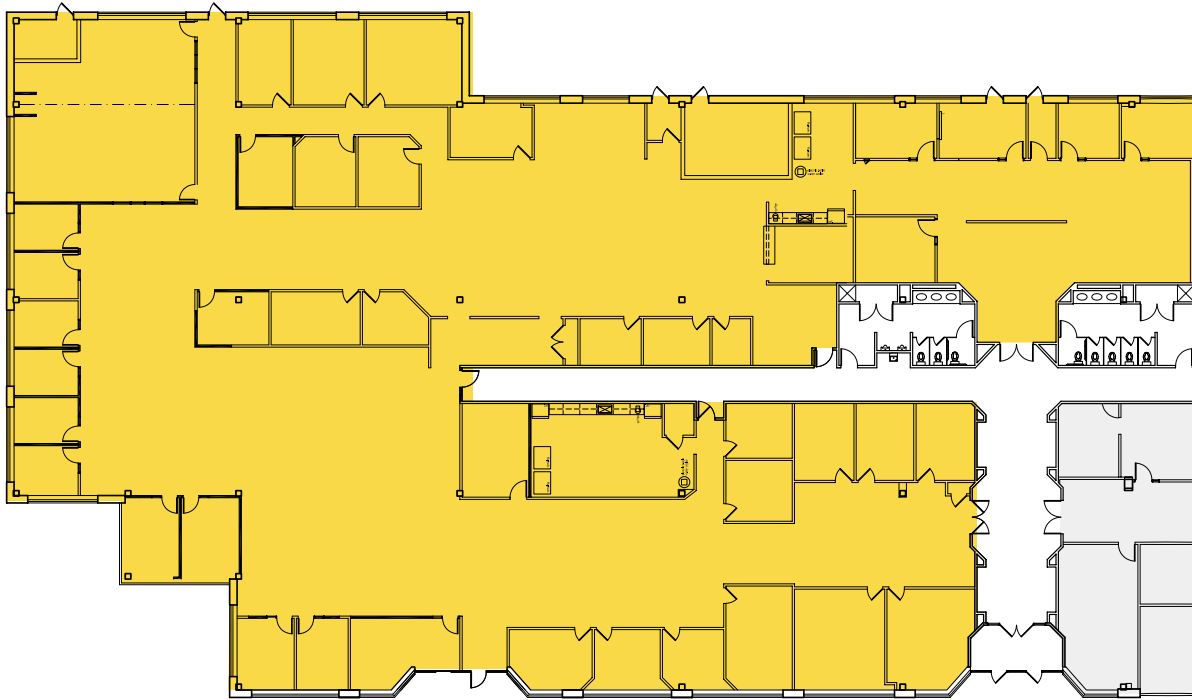
Brendan Schneider, Associate
e: bschneider@sshco.com
d: 610-601-4207

Chris Winnick, Associate
e: cwinnick@sshco.com
d: 610-715-8085



1060 ANDREW DRIVE

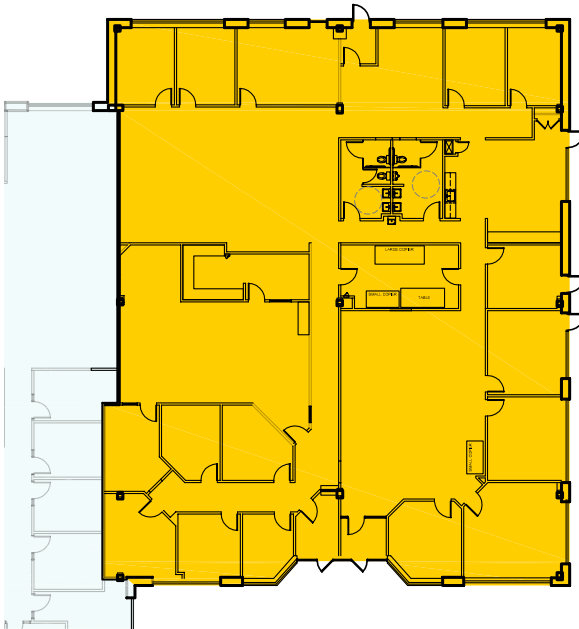
Floor Plan



SUITE 100

Available Space: 3,000 – 20,674 SF

[SUITE 100 3D TOUR](#)



SUITE 170

Available Space: 8,667 SF

FOR MORE INFORMATION

Kevin Hagenberg, Partner
e: khagenberg@sshco.com
d: 610-601-4203

Don Grimes, Managing Director
e: dgrimes@sshco.com
d: 610-601-4204

Brendan Schneider, Associate
e: bschneider@sshco.com
d: 610-601-4207

Chris Winnick, Associate
e: cwinnick@sshco.com
d: 610-715-8085

1060 ANDREW DRIVE

Premier Location

