

623 REGIONAL ROAD

GREENSBORO, NC

TWO NEW BUILDINGS
±12,200 SF AND ±6,800 SF

\$15.50 PSF | NNN

Delivery Nov. 2026

**FOR
LEASE**

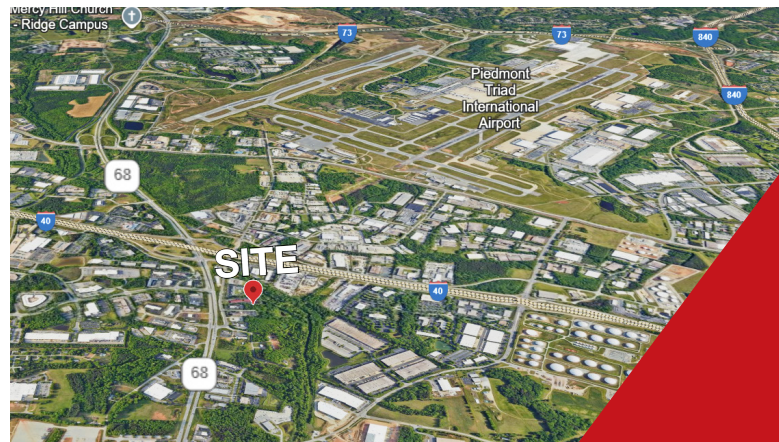
Professional Flex Space
** Subject to change

PROPERTY HIGHLIGHTS

New Flex Space Near Greensboro Airport

Looking for clean modern space for your business - this brand new flex space is perfect for design firms, electricians, engineers, plumbers, HVAC and other professionals. Spaces to be customized to fit your needs.

- Brand new buildings with quality finishes, 20' ceiling heights, 2 drive-in overhead doors/building, plus dedicated outdoor storage
- Just off I-40 - Easy drive to Greensboro, Winston-Salem, & High Point
- Built for trades and light industrial businesses.



NAI Piedmont Triad

Commercial Real Estate Services, World Wide

WILL BLACKWELL, SIOR
BROKER
336.345.1500
wblackwell@naipt.com

JASON SMITH
BROKER
336.709.6745
jsmith@naipt.com

348 N Elm Street - Greensboro, NC 27401 • naipt.com

Building Design

Coming Nov. 2026



This material may contain content generated with AI assistance and publicly sourced data. NAI Piedmont Triad makes every effort to verify the information but makes no warranties or representations regarding the accuracy, completeness, or reliability of the information. Independent verification of all details is strongly encouraged. Prices, terms, and availability are subject to change without prior notice.

WILL BLACKWELL, SIOR
BROKER
336.345.1500
wblackwell@naipt.com

JASON SMITH
BROKER
336.709.6745
jsmith@naipt.com

348 N Elm St. - Greensboro, NC 27401 • naipt.com