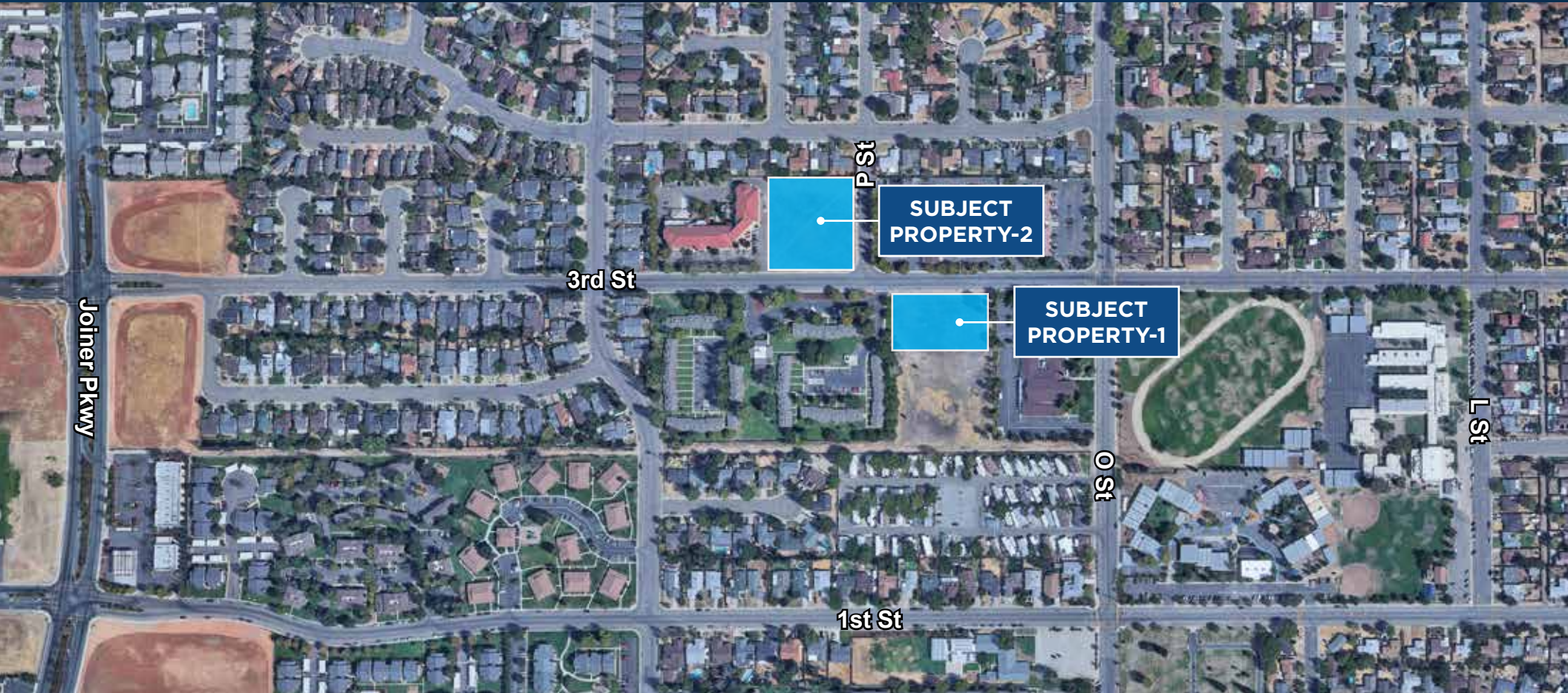


FOR SALE: Two Infill Development Opportunities, Lincoln, CA



- Two prime infill development locations for medical or other services supporting the multiple surrounding senior living facilities
- Located within an established residential neighborhood
- All utilities available to the parcels
- Parcels can be sold individually or together
- Zoned BP (Business Professional)
 - +/- 1.5 acres APN: 021-321-008-000 (Property #2)
 - +/- .93 acres APN: 021-321-041-000 (Property #1)
- Property 2 is on a hard corner (3rd Street & P Street)

Legend

1. Gladding Ridge Assisted Living and Memory Care
2. Lincoln Meadows Care Center
3. Lincoln Professional Center
4. Glen Edwards Middle School
5. The Church of Jesus Christ of Latter-day Saints
6. Lincoln Senior Citizens Apartments
7. Lincoln Cemetery
8. Auburn Creek Apartments
9. Lincoln Fire Station
10. Lincoln Community Center
11. Creekside Oaks Elementary School
12. Lincoln High School



ZONING - PARCEL MAP

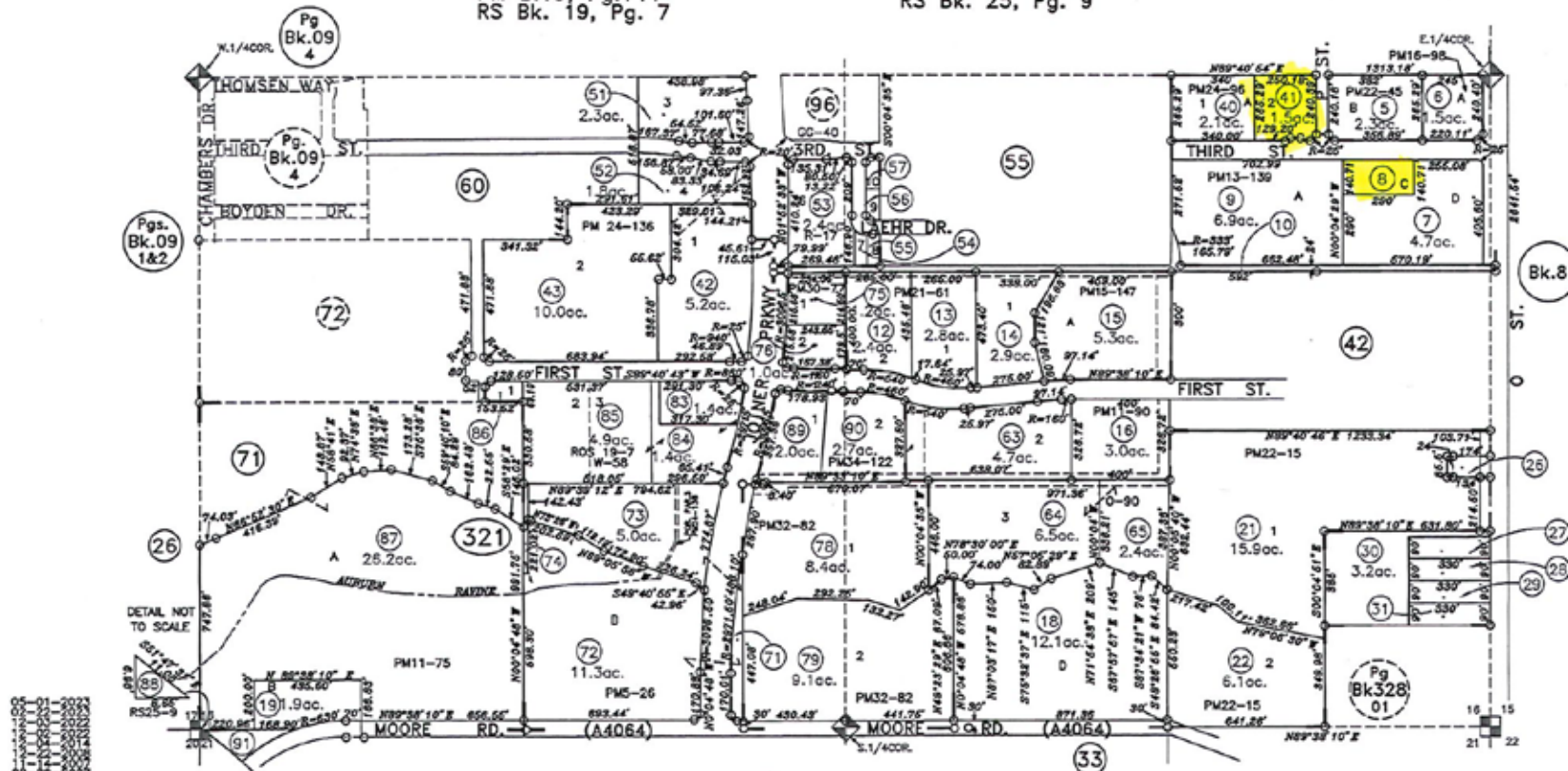
S.1/2 SEC.16, T.12N., R.6E., M.D.B.&M.

PM B.2, Pg.99
PM B.3, Pg.127
PM B.5, Pg.26
PM B.11, Pg.75, 90
PM B.13, Pg.139
PM B.15, Pg.147
PM B.16, Pg.98
West First Sub. Bk.W, Pg.58
PM B.30, Pg.77
PM B.19, Pg.144
RS Bk. 19, Pg. 7

PM B.20, Pg.90
PM B.21, Pg.61
PM B.22, Pg.15, 45
Oak Creek Apts. Sub., Bk.O, Pg.90
PM Bk.24, Pg.96, 136
Laehr Estates No. 3-1 M.O.R. Bk.R, Pg.17
Lincoln Crossing, Ph.1, Lg. Lot Subd., Bk. Y, Pg. 83
PM B.32, Pg.82
PM B.34, Pg.122
RS Bk. 25, Pg. 9

21-32

1"=400'

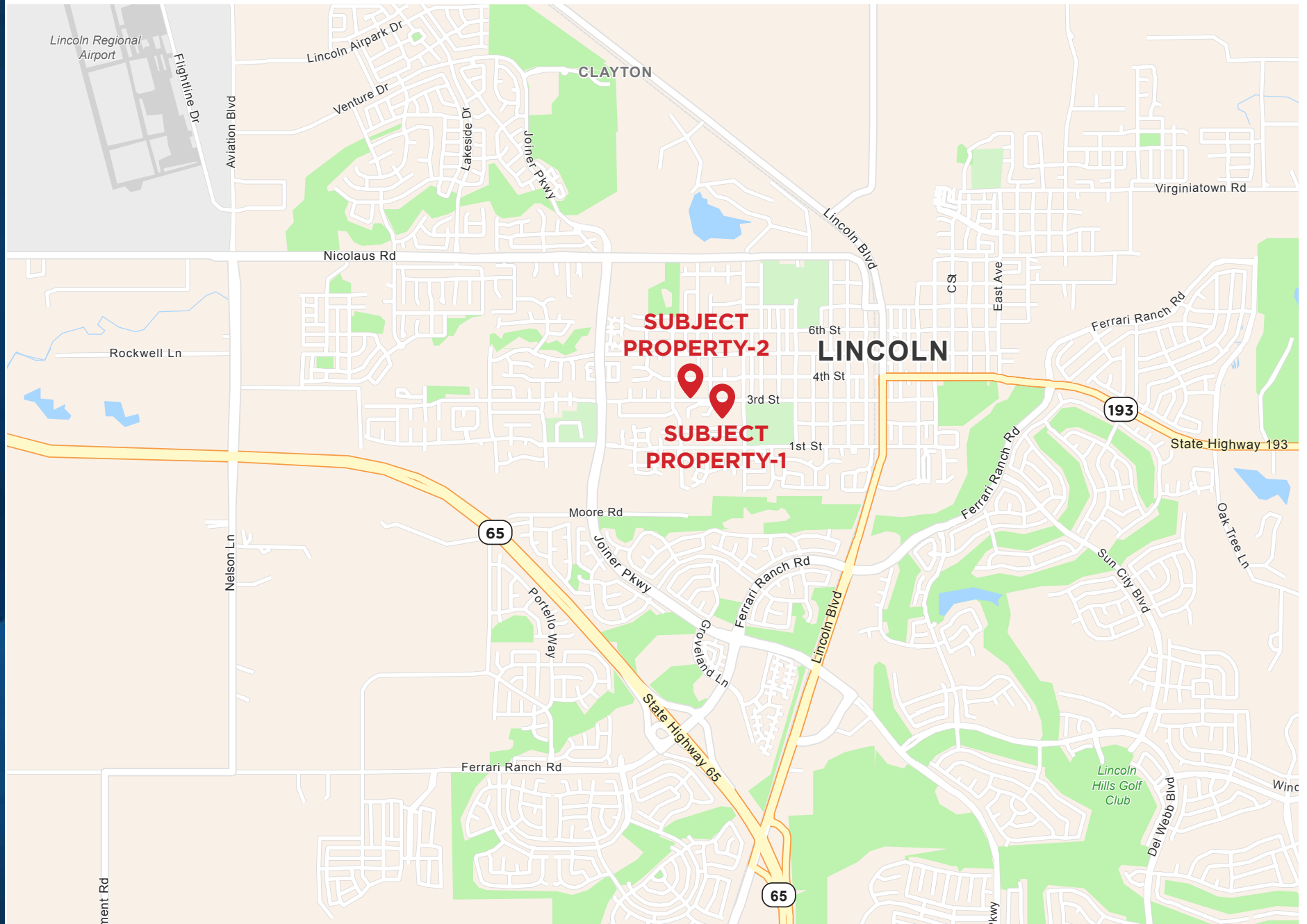


NOTE
This map was prepared for assessment purposes, only and is not intended to illustrate legal building sites or establish precedence over local ordinances. Official information concerning size or use of any parcel should be obtained from recorded documents and local governing agencies.

Assessor's Map Bk.21 Pg.32
County of Placer, Calif.

NOTE
Assessor's Block Numbers Shown in Ellipses.
Assessor's Parcel Numbers Shown in Circles.

LOCATION MAP





KEN NOACK, JR.
 Senior Managing Director
 D 916.569.2384
 C 916.747.6442
 CA RE Lic# 00777705
 ken.noack@nrmk.com

YEARS OF EXPERIENCE

47

AREAS OF SPECIALTY

Land
 Retail
 Landlord Representation

*“There is no limit
 to what you can
 accomplish if you
 don’t care who gets
 the credit”*

Prior to joining Newmark, Mr. Noack had been affiliated with Sacramento-based Grubb & Ellis (17 years) and Camray Commercial (13 years) as a land and retail specialist where he was consistently recognized as a Top Producer.

Mr. Noack is a native of Sacramento, actively involved in the community as well. His involvement includes:

- Four-time Humanitarian of the Year - Sacramento ACRE
- Chairman/Board of Directors/KVIE 6 Public Television
- Chairman/Board of Directors/Yolo Basin Foundation
- President/Board of Directors/Rotary Club of Sacramento
- Chairman/Board of Directors/Sacramento Society for the Blind
- Chairman/Board of Directors/California State Library Foundation
- Board of Directors Capitol Valley Bank
- Chairman/Board of Trustees/Sacramento Rotary Foundation
- Pentagon JCOC 78
- President/Board of Directors – Headwaters Basin Project

Partial List of Sale Transactions

<u>Location</u>	<u>Value</u>
5,500 Acres, Amador County	\$5,000,000
4,200 Acres, Placer County	\$36,000,000
3,300 Acres, Amador County	\$7,000,000
16,100 Acres, Amador County	\$90,000,000
516 Acres, Yolo County	\$4,700,000
250 Acres, Folsom, CA	\$22,500,000
Blue Oaks Marketplace, Rocklin, CA	\$30,000,000
Nimbus Village, Rancho Cordova, CA	\$11,250,000

Education

- University of Denver
- University of California, Berkeley
- University of San Francisco – Bachelor of Science Degree in Human Relations
Organizational Behavior

Personal Information

In his spare time, he is an avid world traveler, having visited 90 countries and counting. He is also passionate about skiing, cycling, and mountaineering, with achievements including climbing 40 major peaks worldwide, such as Mt. Aconcagua in Argentina, the highest peak in the Western Hemisphere; Mt. Kilimanjaro in Africa; the Matterhorn; and Mt. Blanc in Europe. Additionally, he is a retired soccer player and pilot. Mr. Noack has twice completed the challenging Markleyville Death Ride, one of the world’s toughest cycling marathons, in 1992 and 2008.