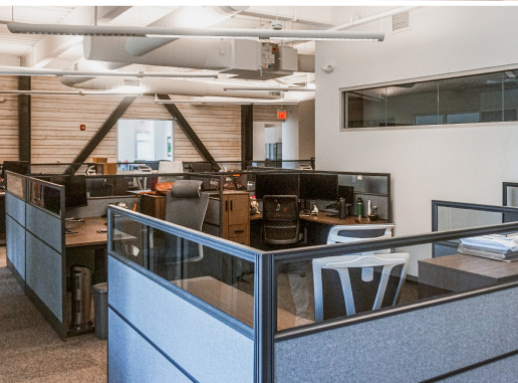


# 1616 CENTER

1616 CAMDEN ROAD • SUITE 250



SOUTH END  
CREATIVE OFFICE  
SPACE FOR LEASE

***±6,089 SF available for lease***

Zach Simpson  
Vice President  
704 315 5091  
zach.simpson@avisonyoung.com

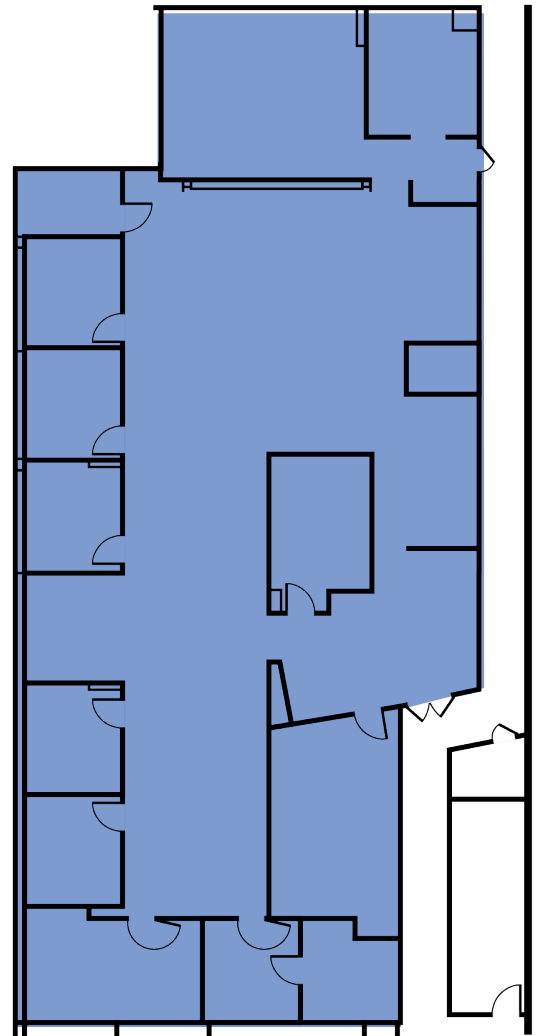
Lem Doss  
Associate  
704 285 2069  
lem.doss@avisonyoung.com

AVISON  
YOUNG

# 1616 CENTER

## ±6,089 SF SOUTH END CREATIVE OFFICE SPACE FOR LEASE

- Creative, 80,000 SF boutique office in the heart of South End
- 7 private offices, 2 conference rooms, 1 huddle room, 2 storage rooms, breakroom and kitchenette
- Ground floor retail and restaurant space including Leroy Fox, Clean Juice and Sabor Latin Grill
- Small fitness center with men and women's locker rooms and showers
- Private parking deck at a 2.7 per 1,000 SF ratio
- On-street parking
- Located directly by The Lynx Light Rail station
- Walking distance to restaurants and local hotspots
- Electric vehicle charging stations and bike share program
- Easy access to I-77, Charlotte Business District and Charlotte Douglas International Airport



**Zach Simpson**  
Vice President  
704 315 5091  
zach.simpson@avisonyoung.com

**Lem Doss**  
Associate  
704 285 2069  
lem.doss@avisonyoung.com

**AVISON  
YOUNG**

# 1616 CENTER



**±6,089 SF SOUTH END  
CREATIVE OFFICE  
SPACE FOR LEASE**



Zach Simpson  
Vice President  
704 315 5091  
zach.simpson@avisonyoung.com

Lem Doss  
Associate  
704 285 2069  
lem.doss@avisonyoung.com

