

LEASE

182 BEN BURTON CIR BUILDING 100

182 Ben Burton Cir Building 100 Bogart, GA 30622



PROPERTY DESCRIPTION

Available in Building 100 is the built-out office space that incubates the main and second floors. The main floor plan comprises of a reception area/lobby, three private offices, one restroom and a kitchenette. The second floor is an open loft space.

LOCATION DESCRIPTION

This Property is located in Coggins Park Executive Suites within Coggins Industrial Park in west Athens-Clarke County. Surrounded by other industrial and office users of local, national, and international presence, this area has prime positioning with its proximity to GA-Loop 10, Highways 316, 78, 15, 29, 441, and Interstate-85. Neighboring manufacturers / distributors include Sign Brothers, Blount Heating and Cooling, UPS, FedEx, Burton and Burton, attorneys, etc.

OFFERING SUMMARY

| | |
|----------------|---------------------------|
| Lease Rate: | \$3,200.00 per month (MG) |
| Available SF: | 1,154 SF |
| Building Size: | 2,020 SF |

| DEMOGRAPHICS | 0.3 MILES | 0.5 MILES | 1 MILE |
|-------------------|-----------|-----------|----------|
| Total Households | 13 | 146 | 1,248 |
| Total Population | 31 | 324 | 2,590 |
| Average HH Income | \$95,623 | \$94,894 | \$93,381 |

Roby Redwine
706 207 2942

Katie Reeves
706 254 3446

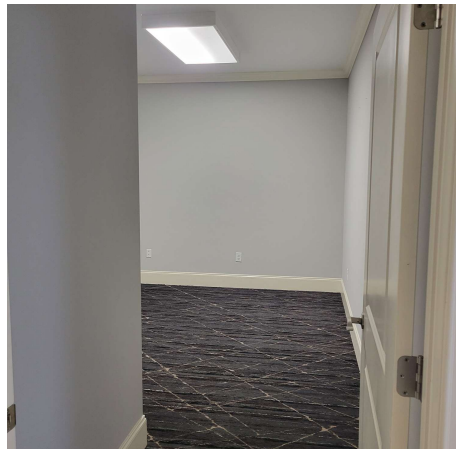


**COLDWELL BANKER
COMMERCIAL**
UPCHURCH REALTY

LEASE

182 BEN BURTON CIR BUILDING 100

182 Ben Burton Cir Building 100 Bogart, GA 30622



Roby Redwine
706 207 2942

Katie Reeves
706 254 3446

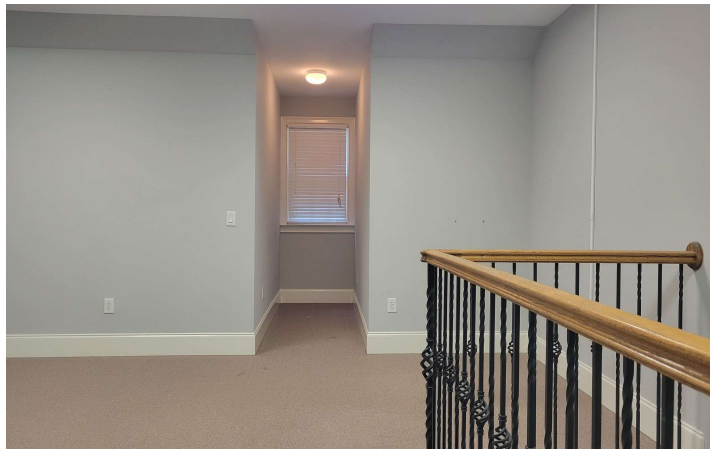


**COLDWELL BANKER
COMMERCIAL**
UPCHURCH REALTY

LEASE

182 BEN BURTON CIR BUILDING 100

182 Ben Burton Cir Building 100 Bogart, GA 30622



Roby Redwine
706 207 2942

Katie Reeves
706 254 3446

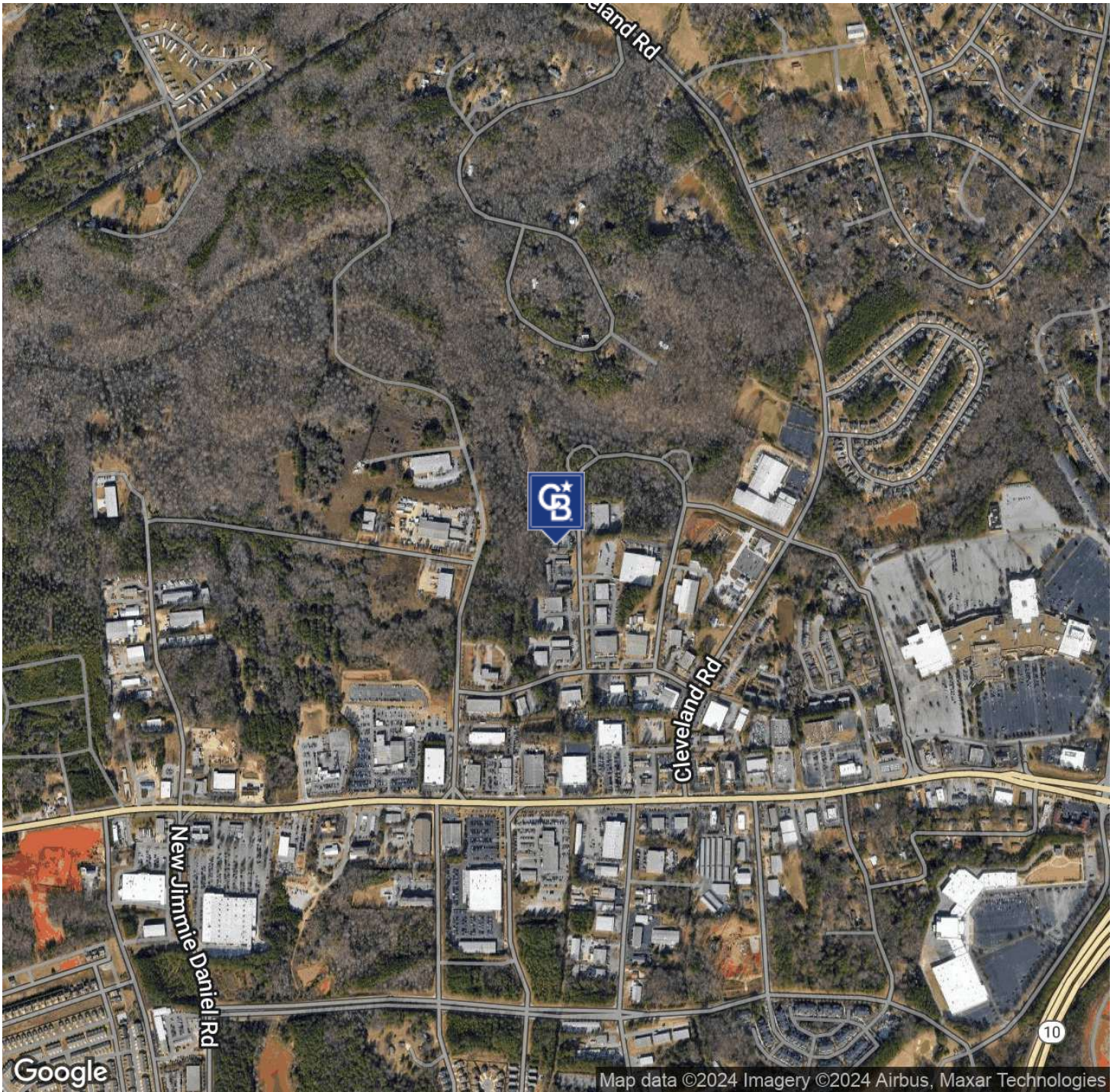


**COLDWELL BANKER
COMMERCIAL**
UPCHURCH REALTY

LEASE

182 BEN BURTON CIR BUILDING 100

182 Ben Burton Cir Building 100 Bogart, GA 30622



Roby Redwine
706 207 2942

Katie Reeves
706 254 3446



**COLDWELL BANKER
COMMERCIAL**
UPCHURCH REALTY