

162,262 SF Industrial Warehouse

6335 Sycamore Canyon Blvd, Riverside, CA

NOT A PART

FOR SUBLEASE

Get in
touch.

CODY LERNER, SIOR

Principal
CA License No. 01994966
951.267.2752
cody.lerner@avisonyoung.com

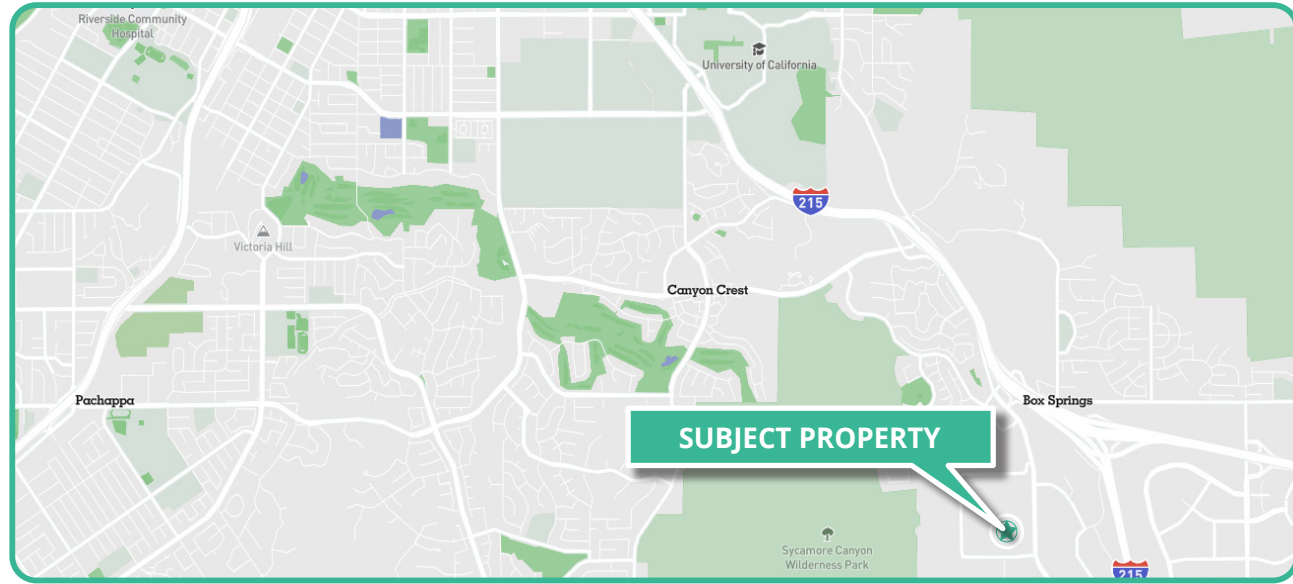
KAMERON GRAYLEE

Associate
CA License No. 02151132
951.267.2757
kameron.graylee@avisonyoung.com

AVISON YOUNG

Inland Empire
3281 E. Guasti Rd, Suite 700
Ontario, California 91761
avisonyoung.us

AVISON
YOUNG



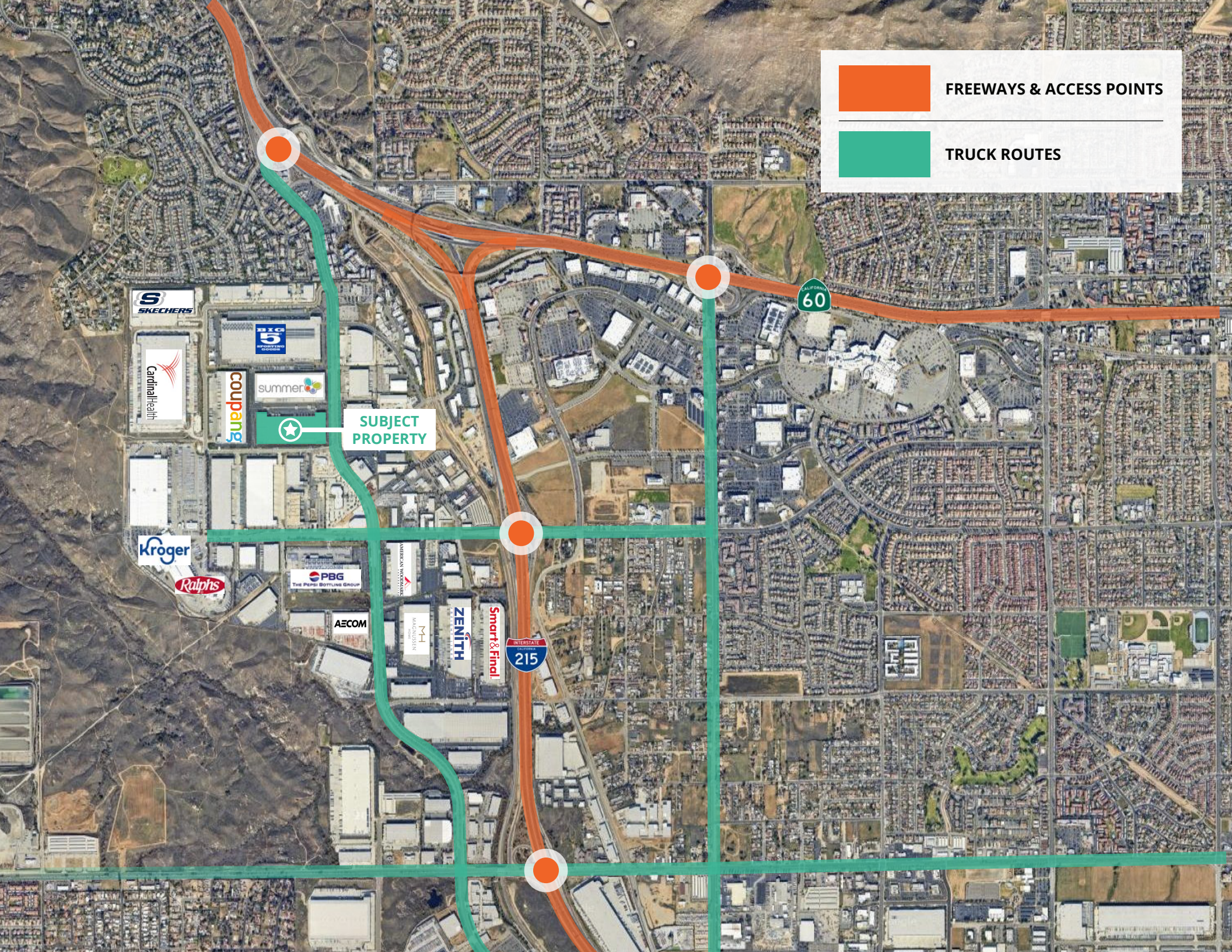
PROPERTY OVERVIEW

BUILDING AREA:	162,262 SF
LEASE RATE:	\$0.92 / PSF Gross <i>*Electric potentially included in rate, Please inquire*</i>
SUBLEASE TERM:	Through July 31 st , 2028
YEAR BUILT:	2008
OFFICE AREA:	775 SF
CEILING HEIGHT:	30' Minimum Clearance
DRIVE-IN DOORS:	2 Ground Level Ramp Loading Doors
DOCK HIGH DOORS	38 Total
WAREHOUSE LIGHTING:	LED
FIRE SPRINKLERS:	ESFR (K17 @ 52PSI)

HIGHLIGHTS

- Ideal location with immediate access to the I-215 and the CA-60 freeway
- Fully secured truck court area
- Newly constructed bathrooms
- 16 load levelers (8 with mechanical pit levelers, shelters, dock locks & swing arm combo light/fans)

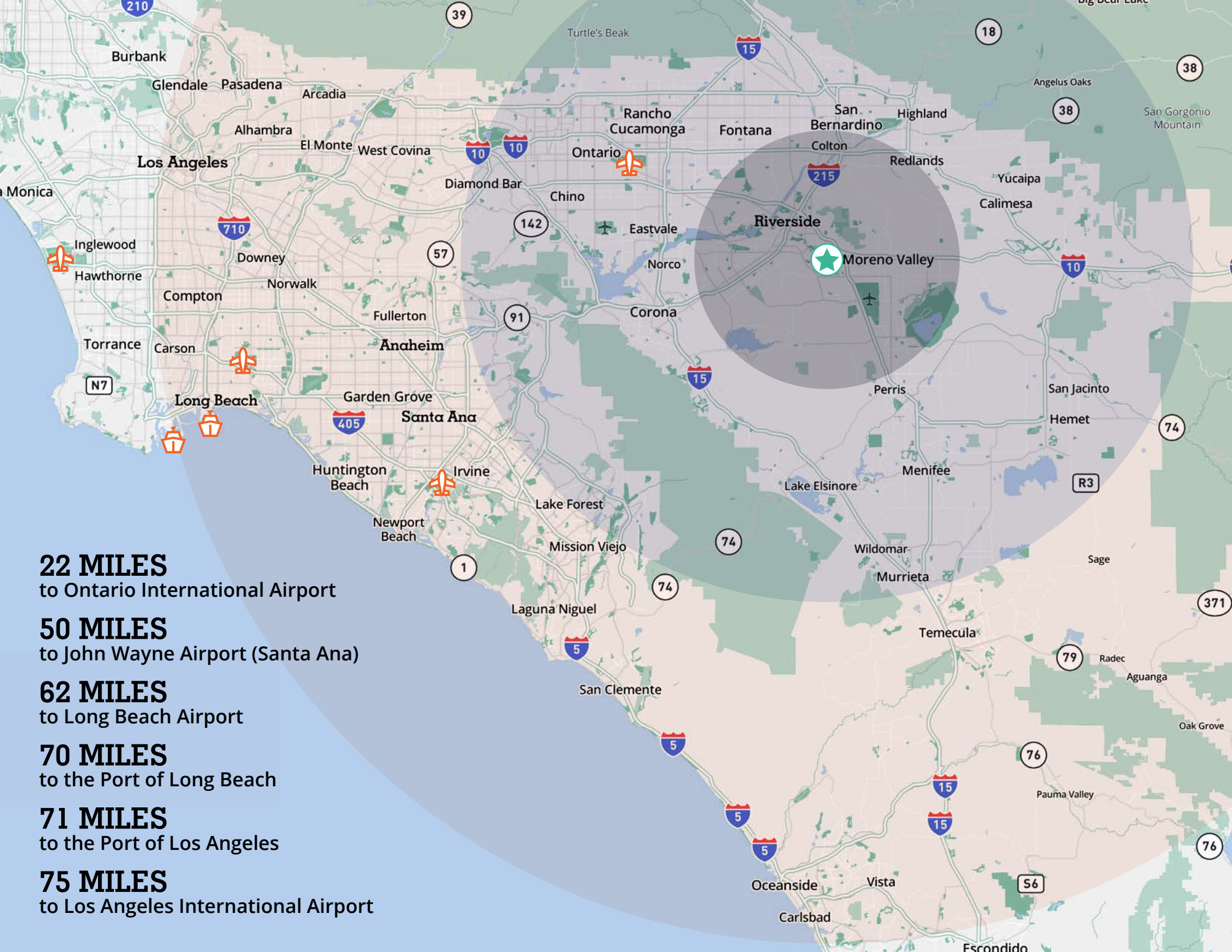




FREEWAYS & ACCESS POINTS

TRUCK ROUTES

SUBJECT PROPERTY

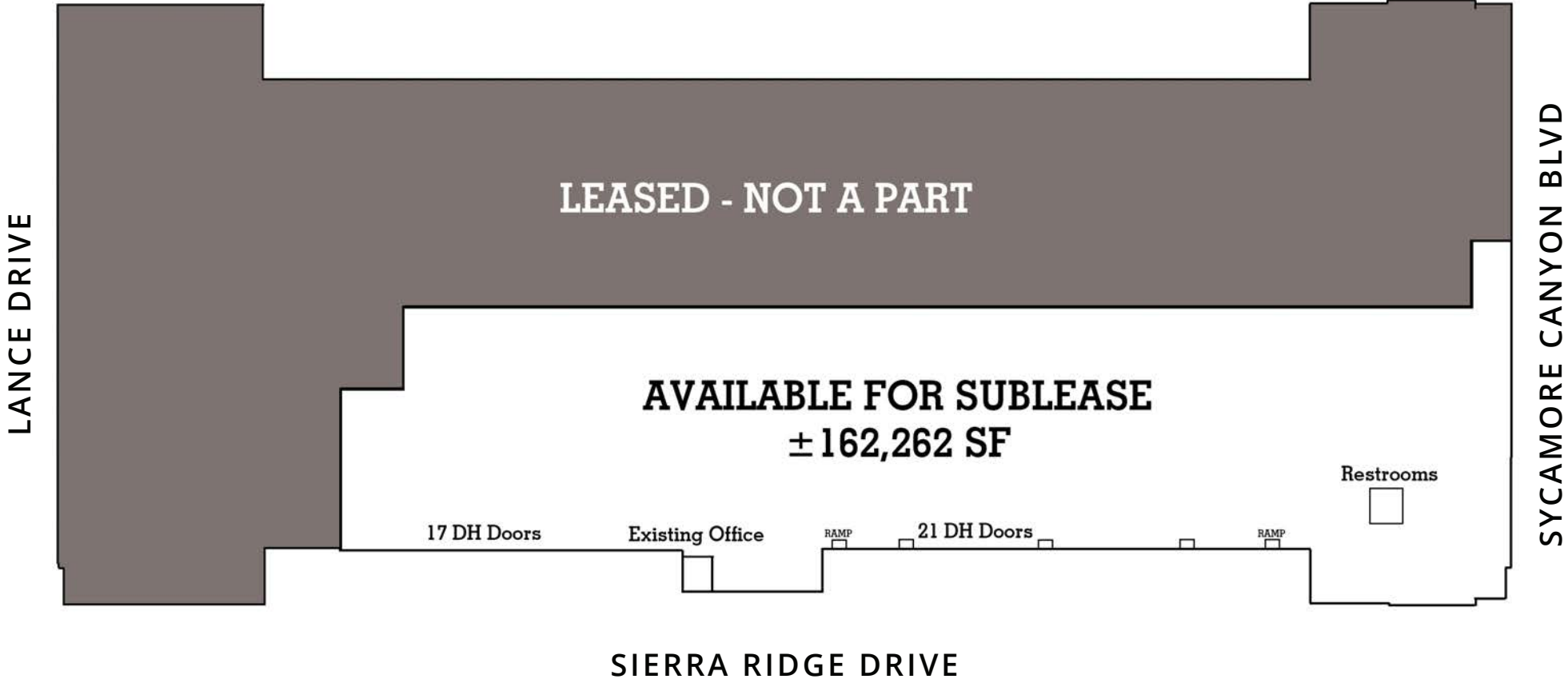


INTERIOR



EXTERIOR

FLOOR PLAN



6335 SYCAMORE CANYON BLVD, RIVERSIDE, CA

CODY LERNER, SIOR
Principal
CA License No. 01994966
951.267.2752
cody.lerner@avisonyoung.com

KAMERON GRAYLEE
Associate
CA License No. 02151132
951.267.2757
kameron.graylee@avisonyoung.com

AVISON YOUNG
Inland Empire
3281 E. Guasti Rd, Suite 700
Ontario, California 91761
avisonyoung.us



© 2024, Avison Young. Information contained herein was obtained from sources deemed reliable and, while thought to be correct, have not been verified. Avison Young does not guarantee the accuracy or completeness of the information presented, nor assumes any responsibility or liability for any errors or omissions therein.