



21 GRANT AVENUE
San Francisco

retailwest

PROPERTY HIGHLIGHTS

Prime Union Square Location,
between Market & Geary

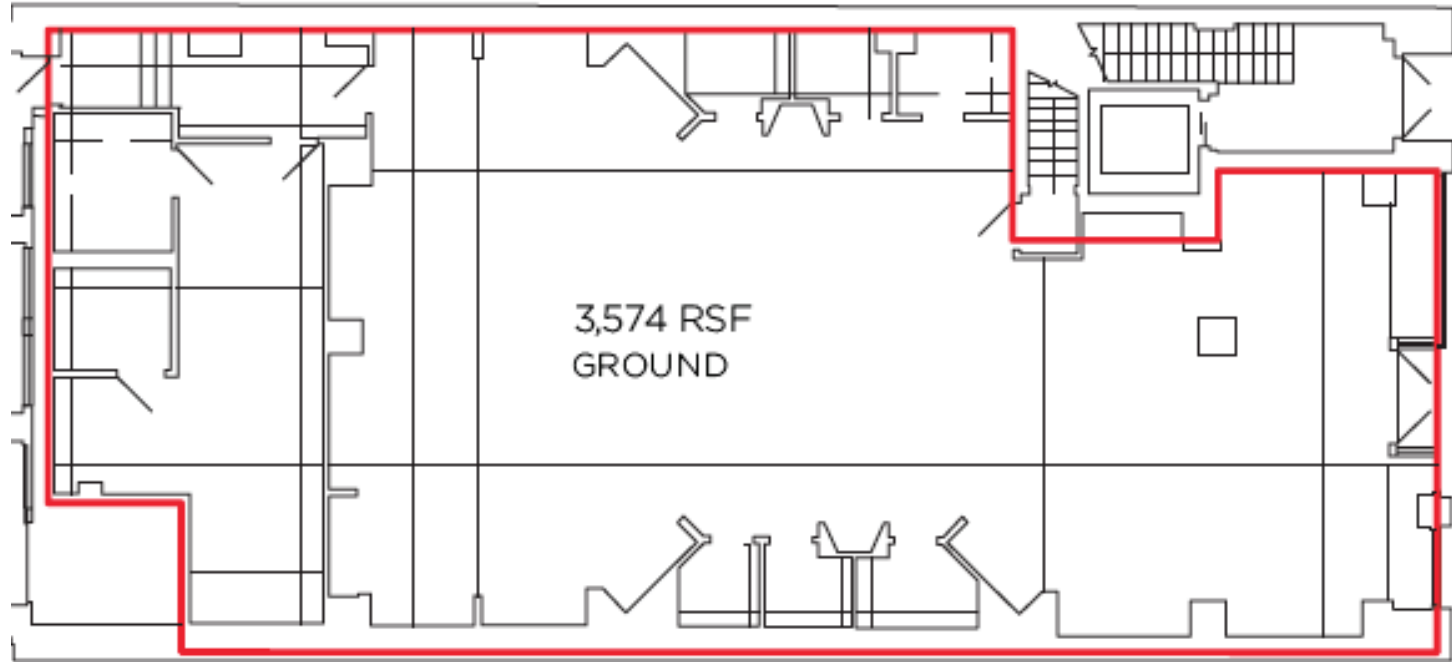
- 3,574 sf Ground Floor Retail
- 1,403 sf Lower Level Storage
- 30' Prime Frontage
- 5th & 6th floors are available for
showroom / gallery / office

Ideal for boutique retail, art gallery,
show room, technology pop-up,
or café use.



GROUND FLOOR

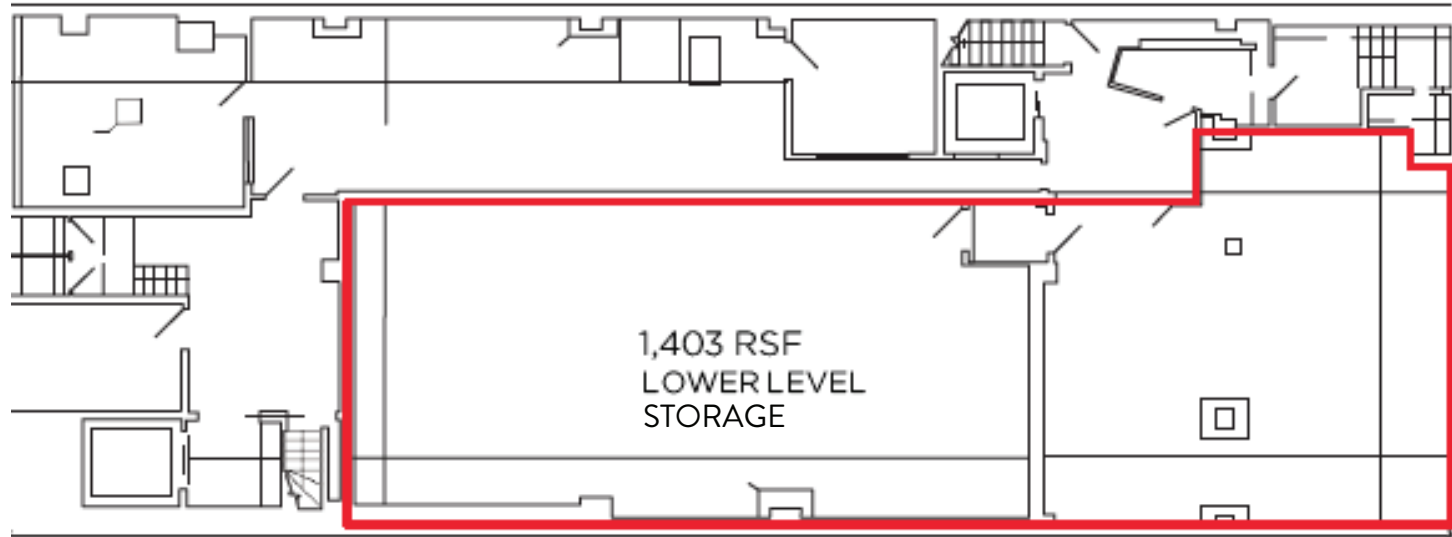
Retail



ENTRY

LOWER LEVEL

Storage



GRANT AVENUE

JESSICA BIRMINGHAM

415.265.6075 jessica@retailwestinc.com

RHONDA DIAZ CALDEWEY

415.271.1900 rhonda@imperiumd.com

retailwest



ABOUT UNION SQUARE

Union Square keeps its role as a ceremonial center of San Francisco, acting as a venue for many concerts and public events, as well art exhibitions.

If you're interested in going shopping, near Union Square you can find the largest stores in the city, including Macy's, Bloomingdale's, and the more upper-end shops such as Louis Vuitton, Gucci, Dior, Versace, Chanel, Dolce & Gabbana, Prada, and Giorgio Armani, among others.

If you're lucky enough to visit San Francisco at Christmas time, the square has some added attractions, such as the enormous Christmas tree and the skating rink to delight both residents and visitors alike.



JESSICA BIRMINGHAM

415.265.6075 jessica@retailwestinc.com

RHONDA DIAZ CALDEWEY

415.271.1900 rhonda@imperiumd.com

retailwest