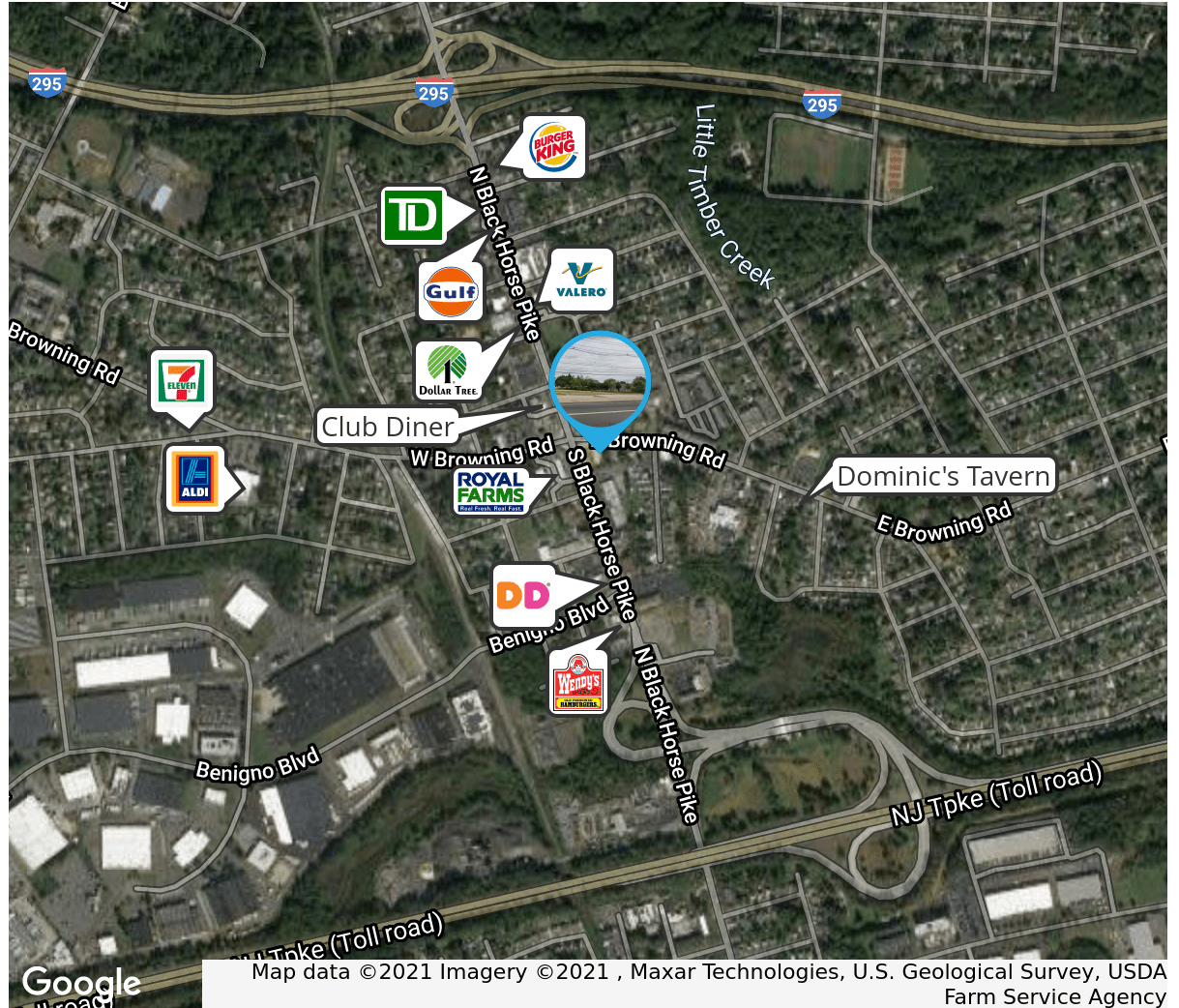




**1 SOUTH BLACK HORSE PIKE | BELLMAWR, NJ**

## PROPERTY DESCRIPTION

- Location** 1 South Black Horse Pike  
Bellmawr, NJ 08031
- Size / SF Available** .545 Acres
- Sale Price** Call for information
- Property / Area Description**
- Premier land site available with .545 acres of land
  - Situated directly off heavily trafficked Black Horse Pike
  - Easy access to I-295 (exit 28), NJ Turnpike (exit 3), and Route 42 (exit 14)
  - Close proximity to various retailers, gas stations, banks
  - Located in densely populated area
  - Transit service within walking distance
  - Minutes from Bellmawr Industrial Park



## Contact Us

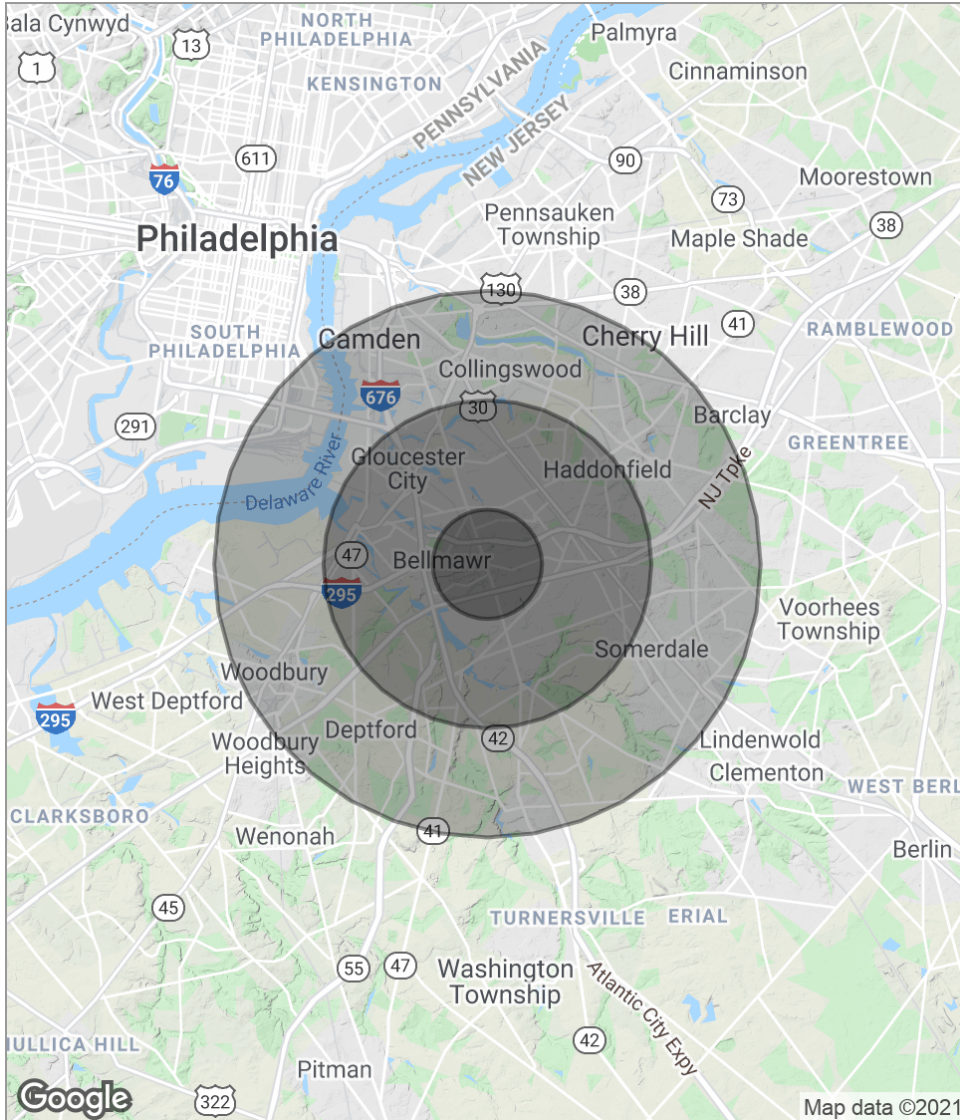
Jason Wolf  
Managing Principal  
856.857.6301  
jason.wolf@wolfcre.com

Eric Flocco  
Vice President  
609.790.6940  
eric.flocco@wolfcre.com

The foregoing information was furnished to us by sources which we deem to be reliable, but no warranty or representation is made as to the accuracy thereof. Subject to correction of errors, omissions, change of price, prior sale or withdrawal from market without notice.

follow us:    

## DEMOGRAPHICS MAP

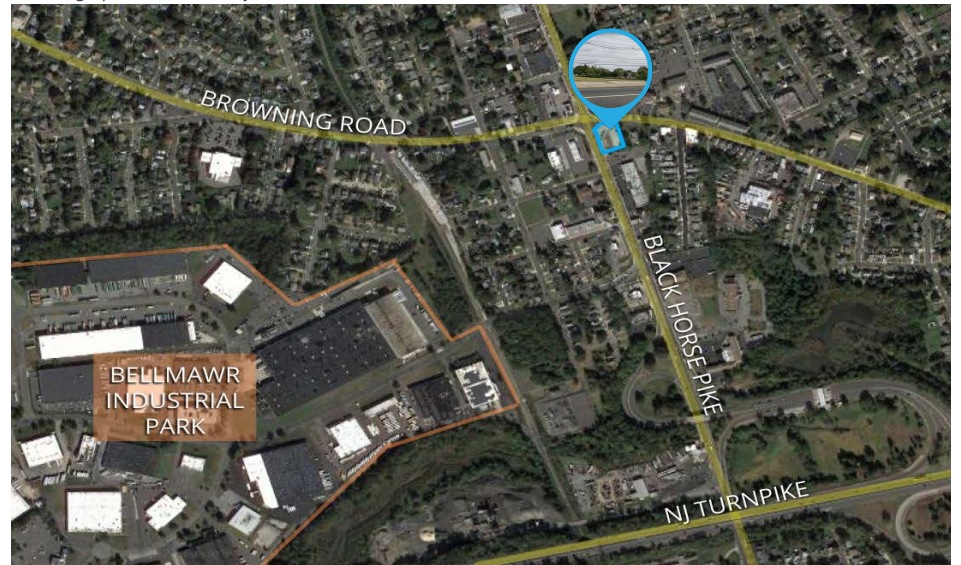


POPULATION	1 MILE	3 MILES	5 MILES
Total population	13,052	113,870	294,042
Median age	41.6	40.0	38.1
Median age (male)	40.6	39.0	36.7
Median age (Female)	42.3	40.8	39.3

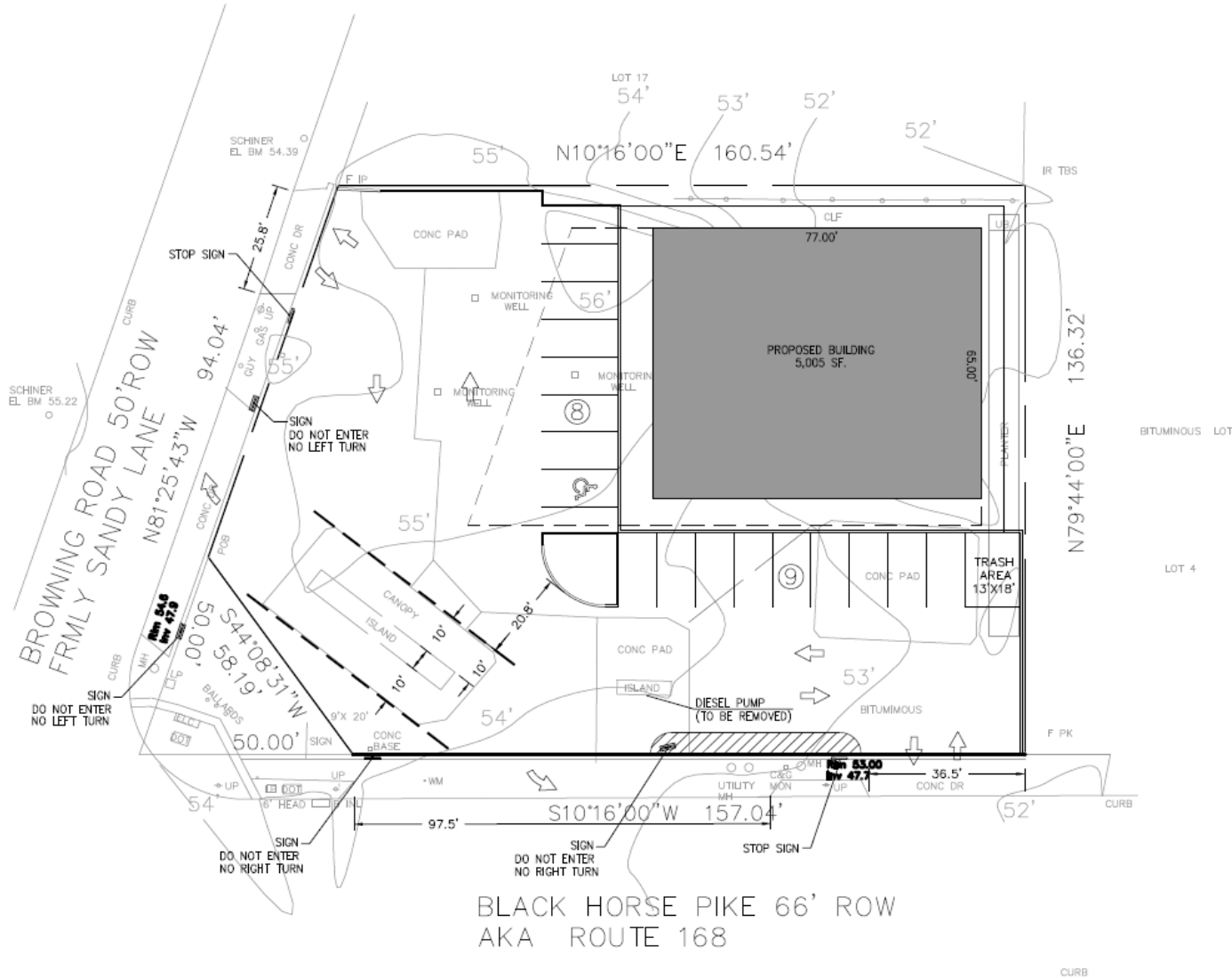
HOUSEHOLDS & INCOME	1 MILE	3 MILES	5 MILES
Total households	5,170	46,316	116,220
# of persons per HH	2.5	2.5	2.5
Average HH income	\$74,375	\$74,026	\$72,569
Average house value	\$242,604	\$239,674	\$246,373

\* Demographic data derived from 2010 US Census



The foregoing information was furnished to us by sources which we deem to be reliable, but no warranty or representation is made as to the accuracy thereof. Subject to correction of errors, omissions, change of price, prior sale or withdrawal from market without notice.

## SITE PLANS



The foregoing information was furnished to us by sources which we deem to be reliable, but no warranty or representation is made as to the accuracy thereof. Subject to correction of errors, omissions, change of price, prior sale or withdrawal from market without notice.