

2127 ESPEY CT, SUITE 102  
CROFTON, MD 21114

Virtual Tour



FOR LEASE

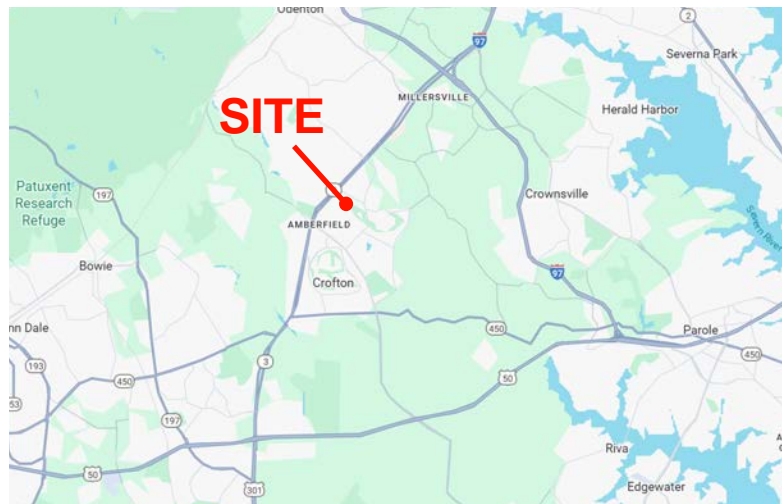
## Richardson Building Move-In Ready Office

- ± 2,307 sqft office suite – See floor plan on reverse
- Fresh paint, new carpet, upgraded LED lighting, and new roller shades
- Includes **reception area with built-in desk, large conference room, upgraded kitchenette, open workplace, and multiple offices**
- Free and unassigned parking
- Prime access to rear entrance of building and rear parking lot
- Key-less entry
- Close proximity to a large shopping center with restaurants and cafes
- Located on MD-450 with easy access to RT-50 and MD Rt-3
- **Lease Rate: \$24.50/SQFT - Full Service Lease**
- **Utilities and in-suite janitorial includes – No CAM fees**



**EUGENIA ANTONIS**  
Commercial Salesperson  
**410-449-1199**  
eantonis@friendre.com

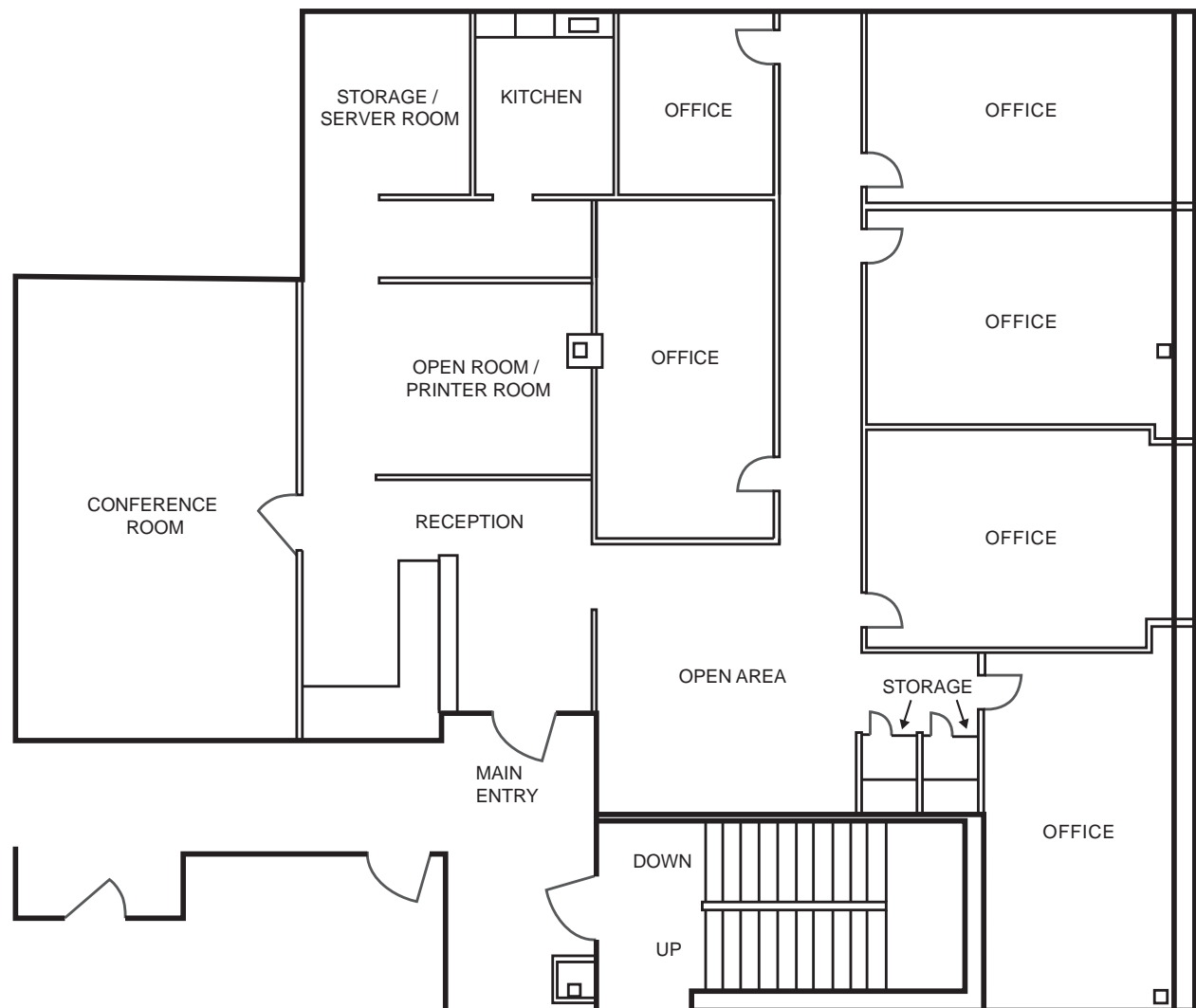
**MATTHEW ANTONIS**  
Commercial Salesperson  
**410-449-1072**  
mantonis@friendre.com



**Main: 410-449-1144 · Fax: 410-983-3956 · friendre.com**  
8436 Veterans Hwy, Millersville, MD 21108

All information is from sources deemed reliable; However, we are not responsible for errors, omissions, misinterpretation, or misuse of information presented; We make no warranty of any kind, express or implied, with respect to the property or any other matters; Information and the property is subject to change, corrections, prior sales, or withdrawal.

SUITE 102  
FLOOR PLAN



RICHARDSON BUILDING

2127 ESPEY COURT, CROFTON, MD 21114

FLOOR PLAN